



Lenovo G50-80 80E5 CD Drive Replacement

This guide will instruct users how to disassemble the laptop and remove the CD drive for repair or replacement.

Written By: Brett Bousquet





TOOLS:

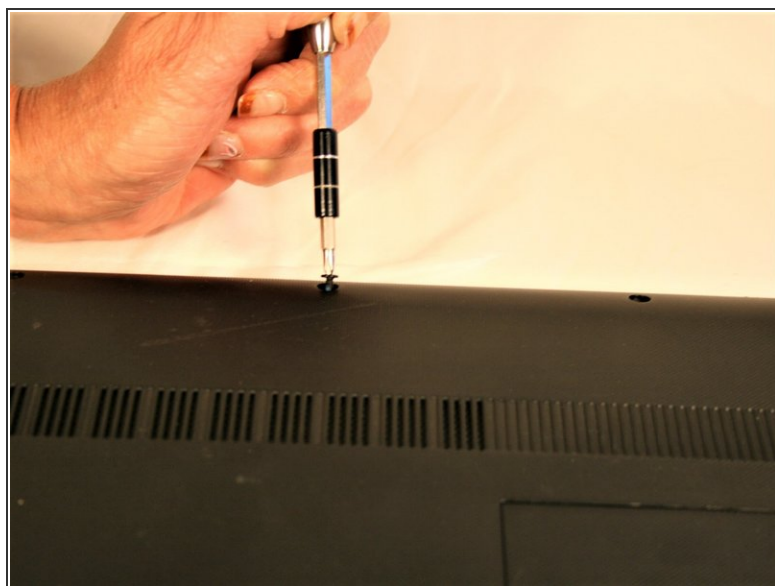
- [Phillips #00 Screwdriver](#) (1)



PARTS:

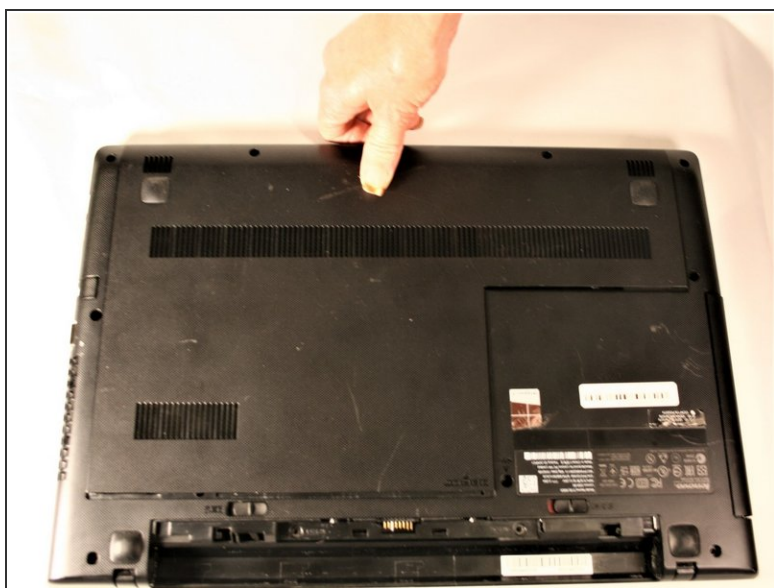
- [Lenovo IdeaPad 330 and Miix 320 Optical Drive](#) (1)

Step 1 — Bottom Access Panel



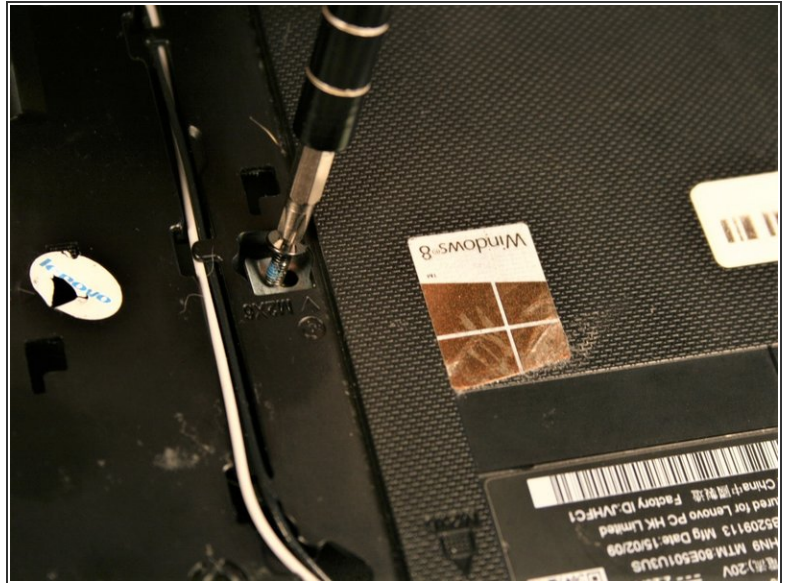
- Remove the three screws securing the outer cover of the laptop using a Phillips #0 screwdriver.

Step 2



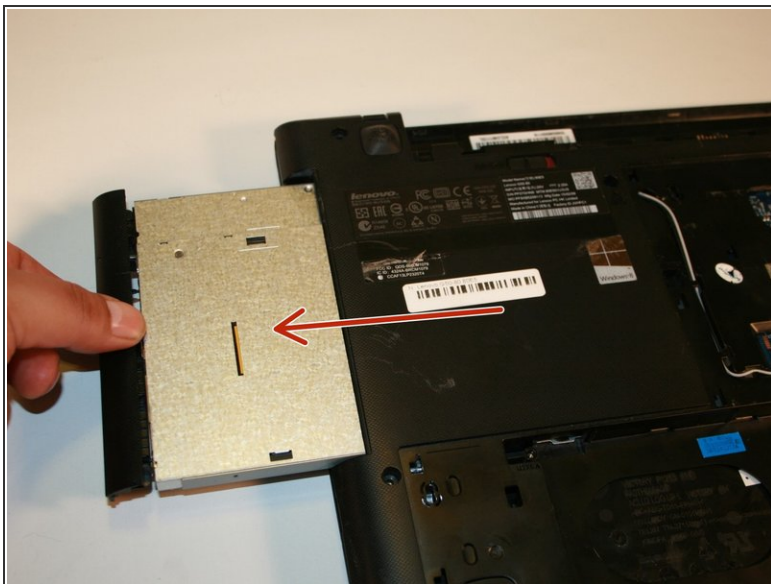
- Slide the cover away from the hinges and lift the panel off.

Step 3 — CD Drive



- Locate the CD drive.
- Remove the single #00 Phillips 5.5 mm screw on the centermost side of the drive.

Step 4



- Move the drive towards the outside of the laptop to remove the connector.
- Pull the drive out of the laptop.

To reassemble your device, follow these instructions in reverse order.