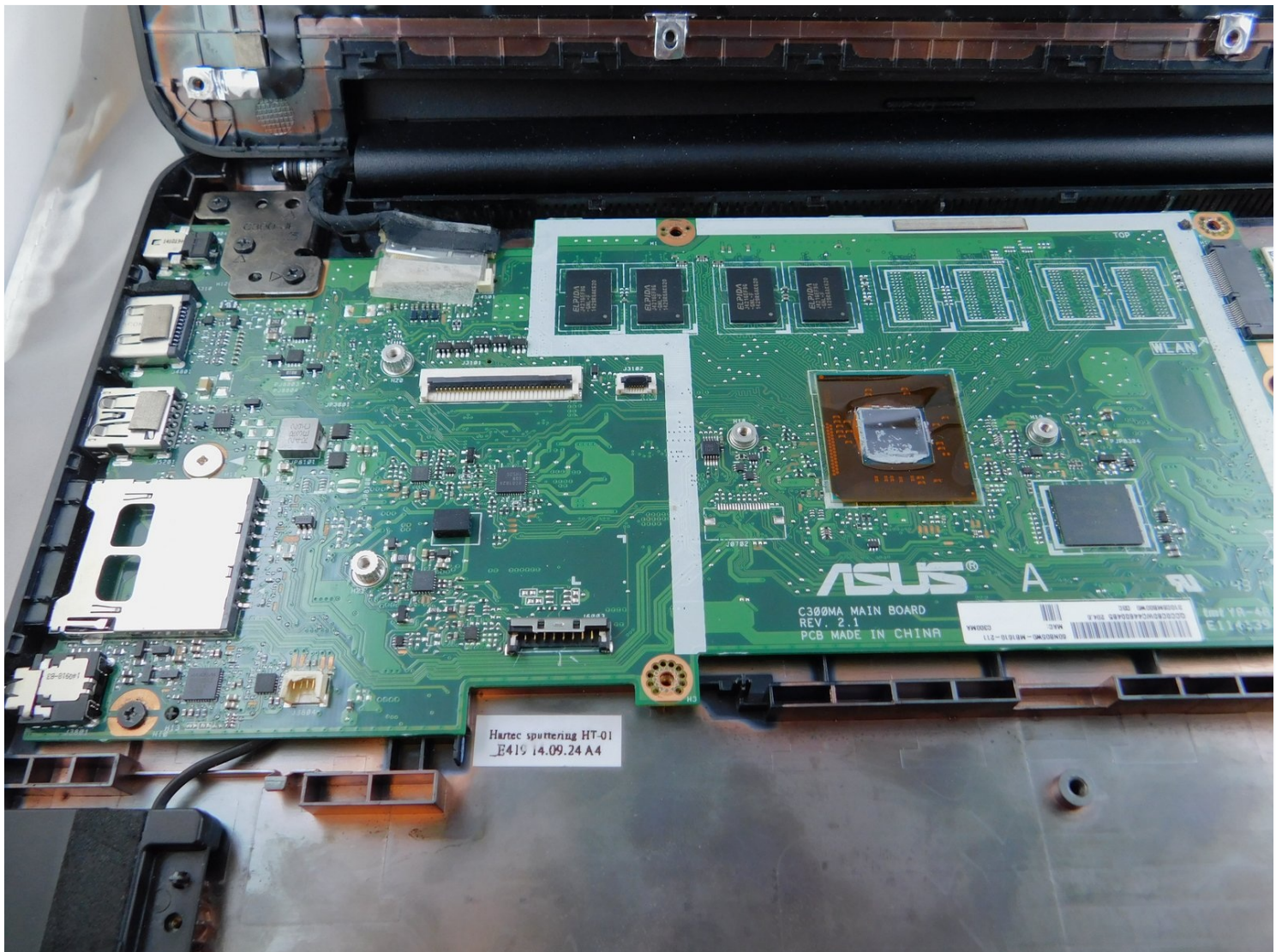




Asus Chromebook C300MA-BBCLN12 Motherboard Replacement

This guide will show you how to open the casing...

Written By: Brooke Austin



INTRODUCTION

This guide will show you how to open the casing on your Chromebook and remove your motherboard so that you can replace it.

TOOLS:

Phillips #00 Screwdriver (1)

Tweezers (1)

iFixit Opening Tool (1)

Spudger (1)

Step 1 — Battery



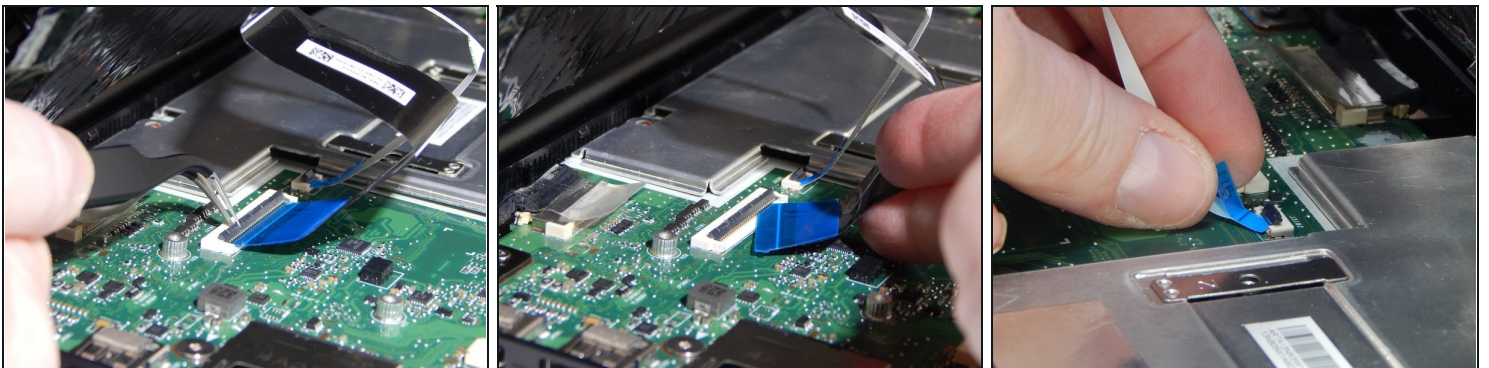
- Remove the eight 9.0mm Phillips #00 screws.
- Remove the three 6.0mm Phillips #00 screws.

Step 2



- Separate the palm rest assembly from the bottom housing using the plastic opening tool.
- ① It is recommended that you start from a corner and run the plastic opening tool along the edge of the housing.
- ⚠ Lift the palm rest assembly slowly to prevent damaging the two cables that connect it to the motherboard.

Step 3



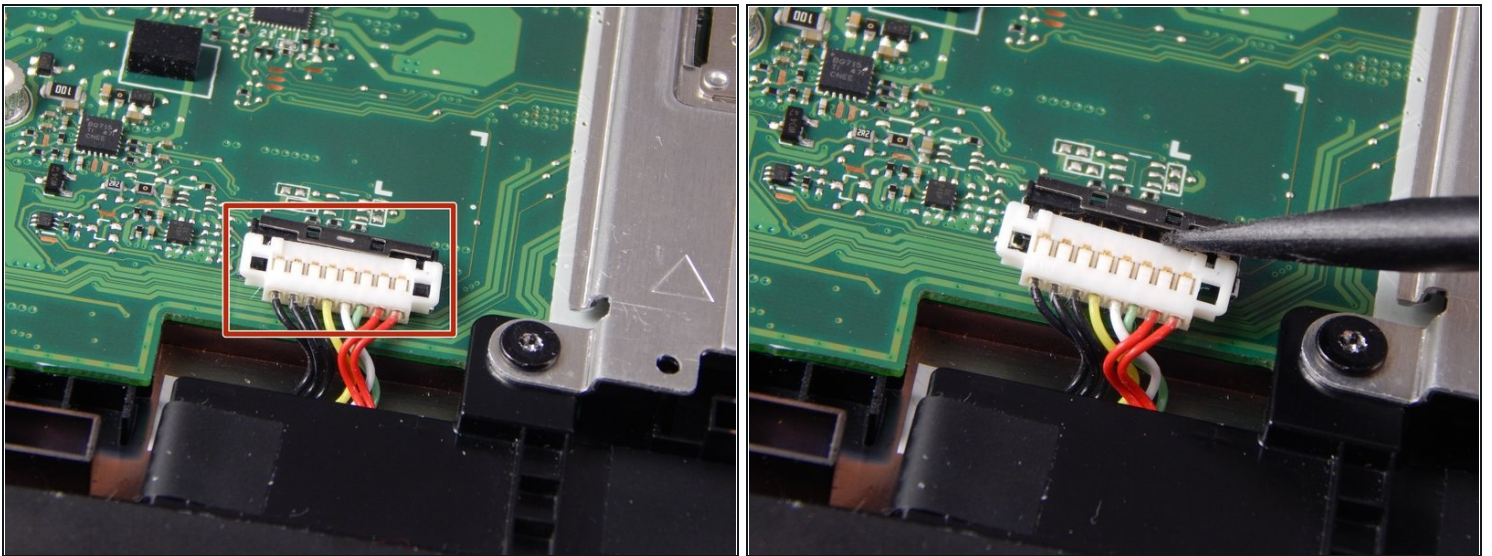
- Flip back the hinges on the connectors that secure the wide black cable and the narrow white cable using the tweezers.
- Disconnect the wide black cable from the motherboard by pulling the blue cable tab away from the connector.
- Disconnect the white ribbon cable from the motherboard by pulling the blue cable tab away from the connector.

Step 4



- Remove the six 6.0mm Phillips #00 screws that secure the battery to the bottom housing.

Step 5



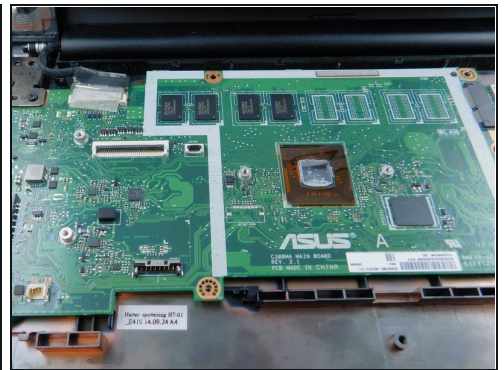
- Disconnect the bundled cable connector that attaches the battery to the motherboard using the small plastic spudger.

Step 6



- Remove the battery from the bottom housing.

Step 7 — Motherboard



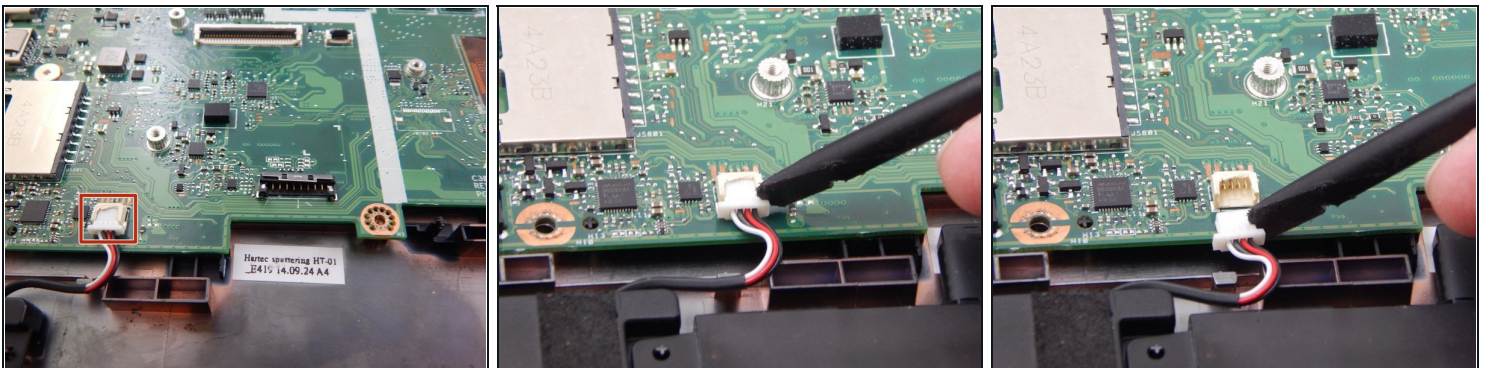
- Remove the two 6.0mm Phillips #00 screws that secure the metal heat shield to the motherboard.
- Remove the metal heat shield.

Step 8



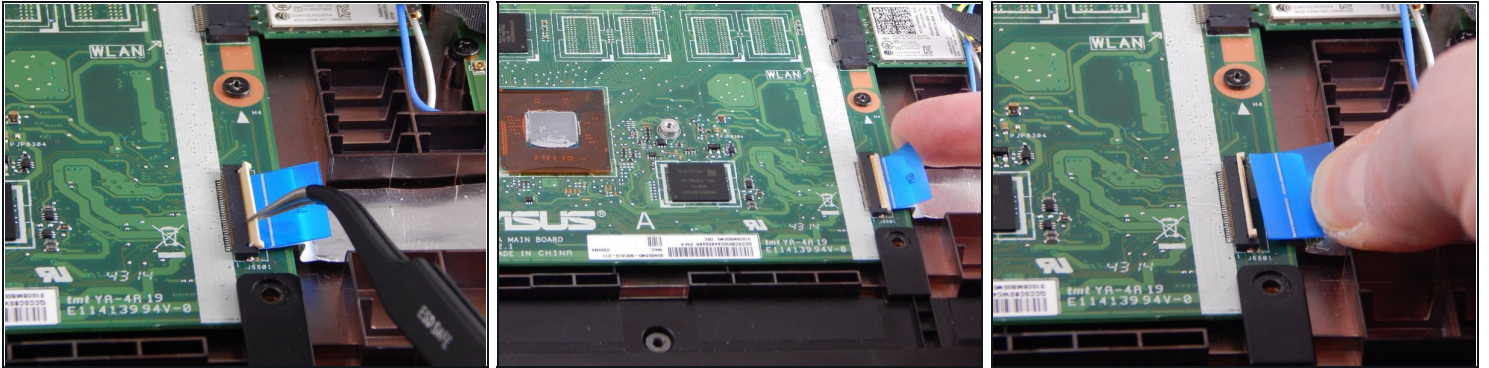
- Peel back the protective tape that covers the display cable connector.
- Disconnect the display cable from the motherboard using the plastic spudger tool.

Step 9



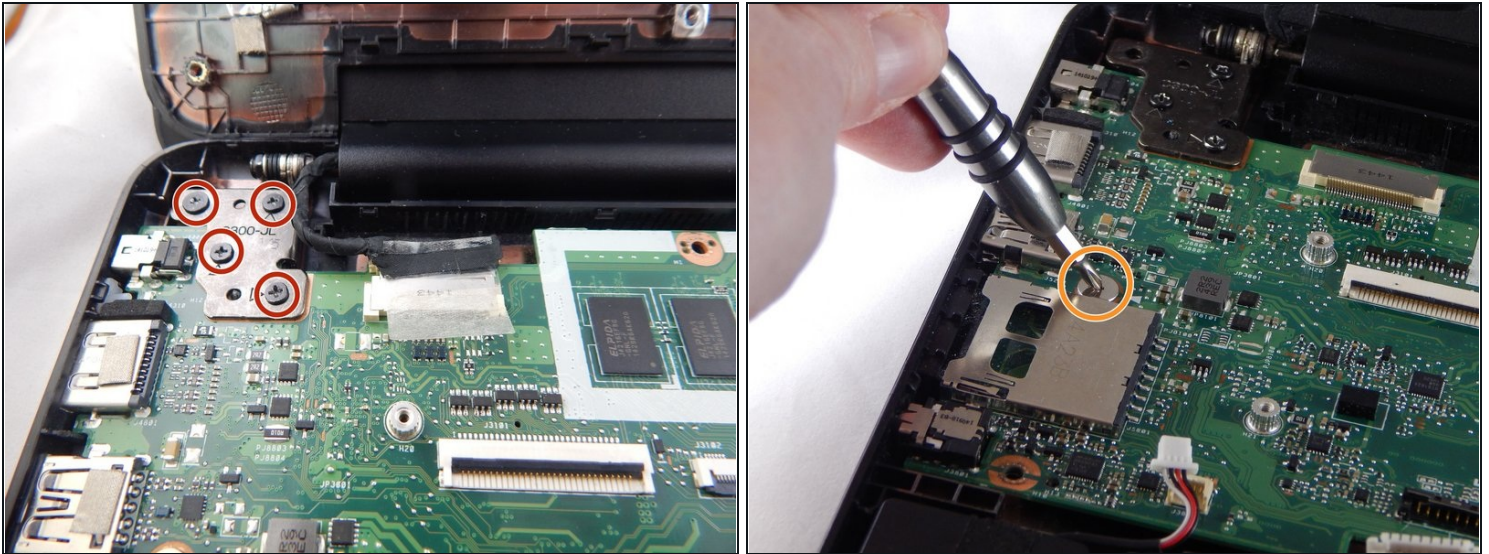
- Disconnect the speaker cable from the motherboard using the plastic spudger tool.

Step 10



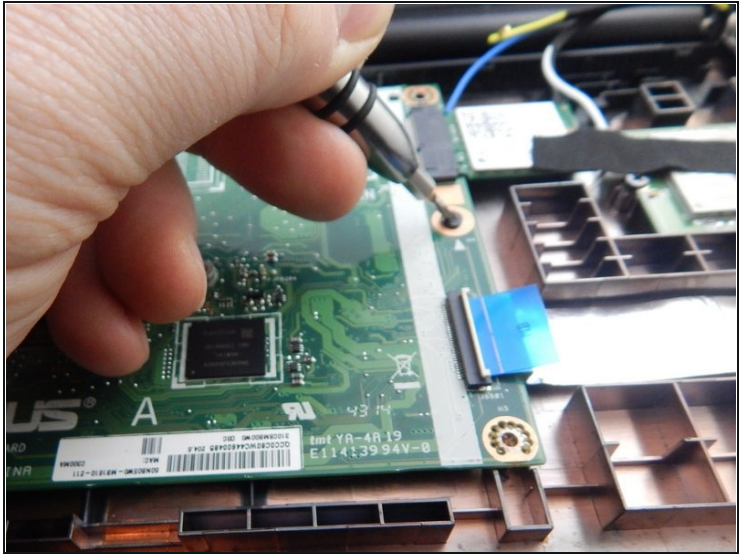
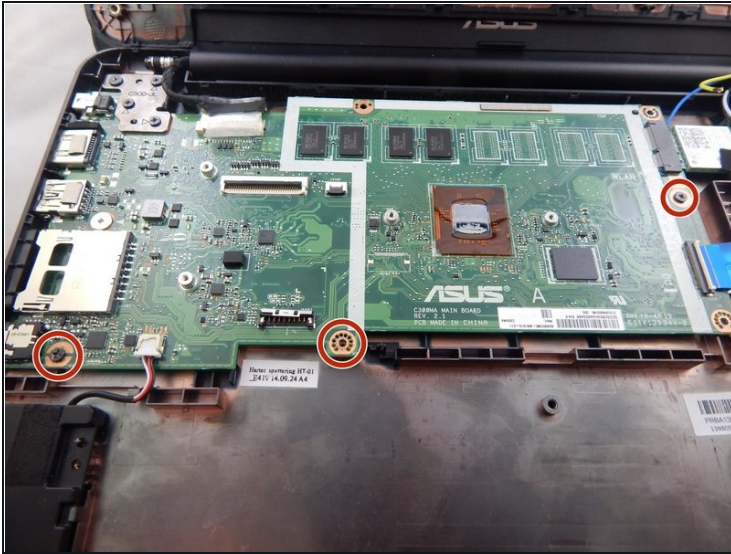
- Flip back the hinge that secures the blue daughterboard cable to the motherboard using the tweezers.
- Disconnect the blue cable connecting the motherboard to the daughterboard by pulling on the blue cable tab.

Step 11



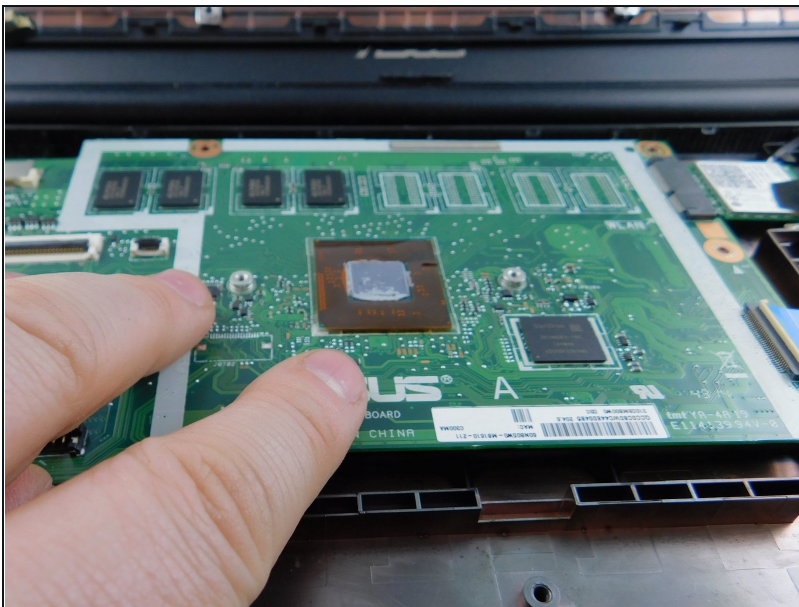
- Remove the four 3.0mm Phillips #00 screws that attach the left hinge.
- Remove the large silver 5.0mm Phillips #00 screw from the center-left side of the motherboard.

Step 12



- Remove the three 3.0mm Phillips #00 screws that secure the motherboard to the housing.

Step 13



- Remove the motherboard.

To reassemble your device, follow these instructions in reverse order.