



# Thrustmaster T Flight Hotas 4 PlayStation Action Buttons Replacement

The goal of this guide is to show how to replace the PlayStation action buttons.

Written By: Aaron Banaga



---

## INTRODUCTION

The PlayStation Action Buttons are the x, square, circle, and triangle buttons. They are responsible for camera adjustments and other various actions.



### TOOLS:

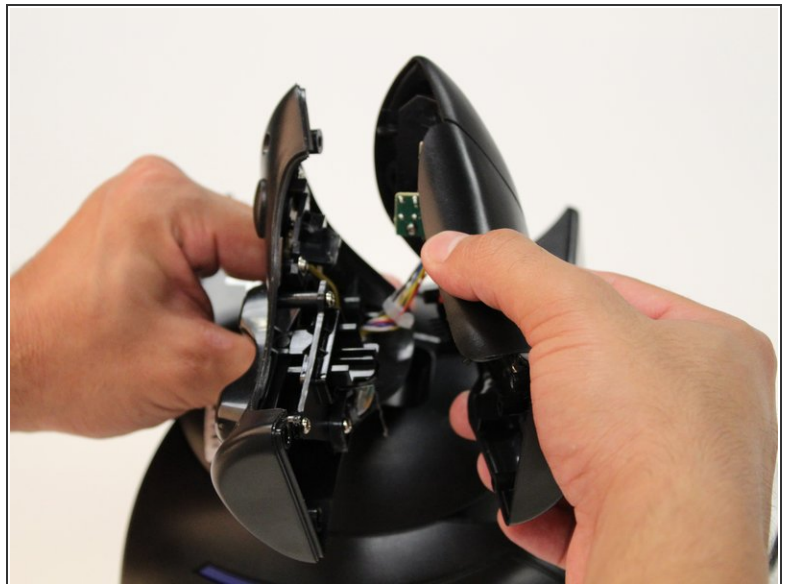
- [JIS #1](#) (1)
-

## Step 1 — J1 Screws on Throttle



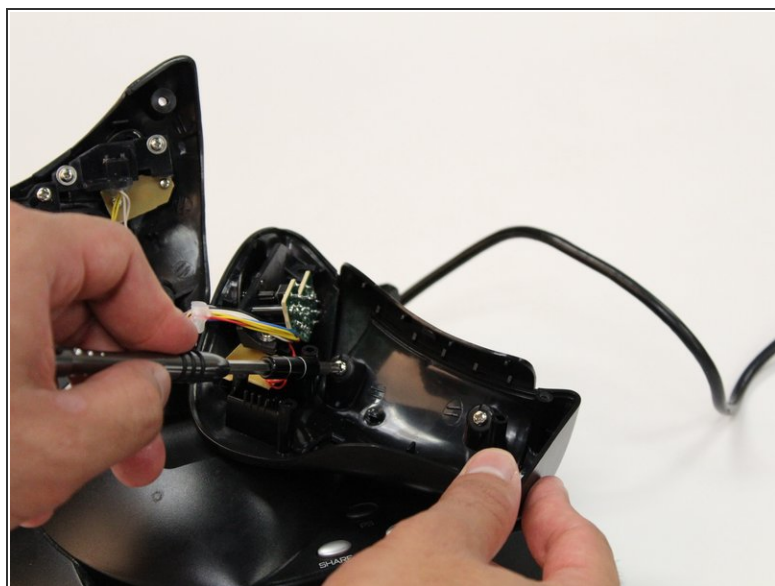
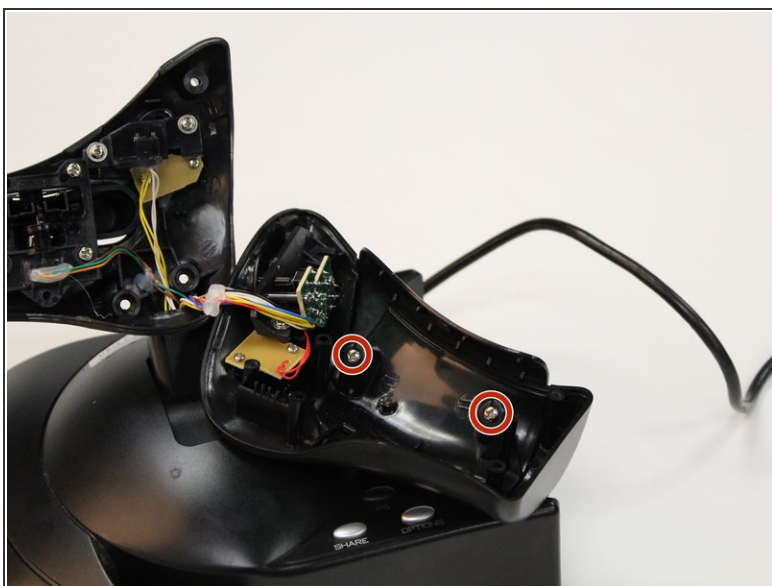
- ⓘ Be sure to disconnect the controller from the power source before disassembling.
- Remove the five 15 mm J1 JIS head screws from the front of the throttle.

## Step 2 — Throttle Panel



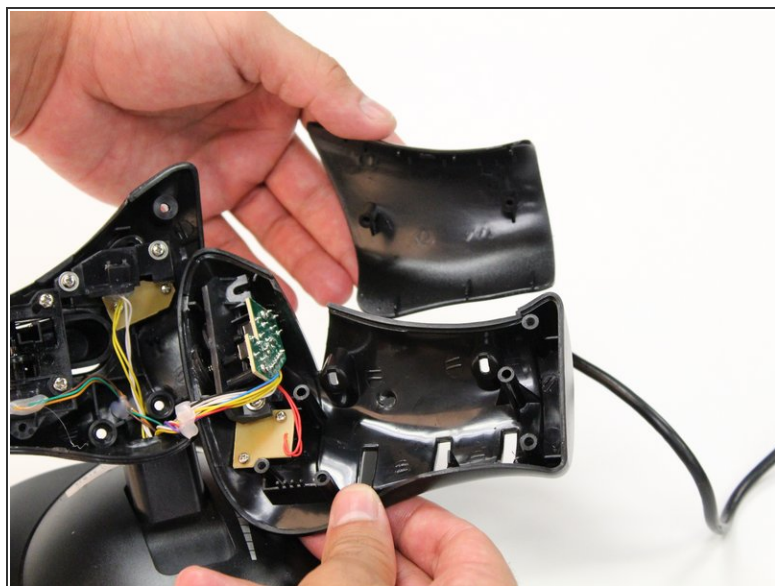
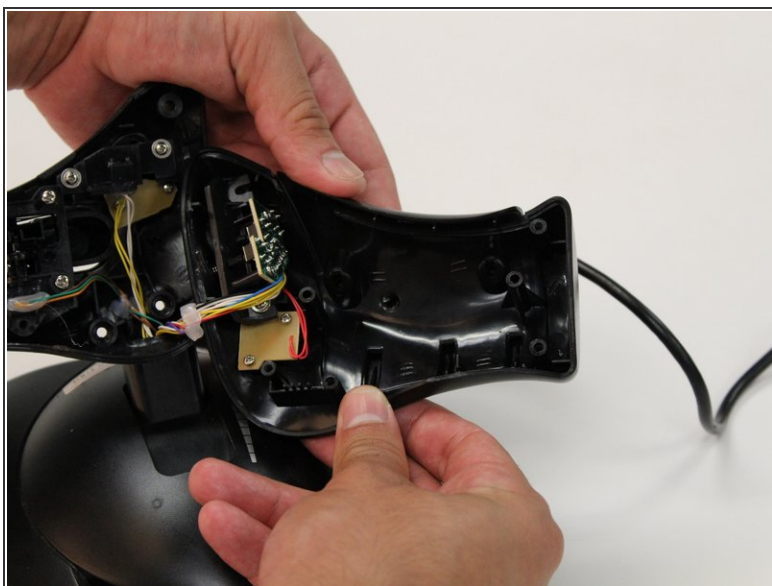
- ⓘ Be sure to disconnect the controller from the power source before disassembling.
- Using your hands, pull away the panel from the throttle.

## Step 3 — PlayStation Action Buttons



- Remove the two 8 mm J1 JIS head screws.

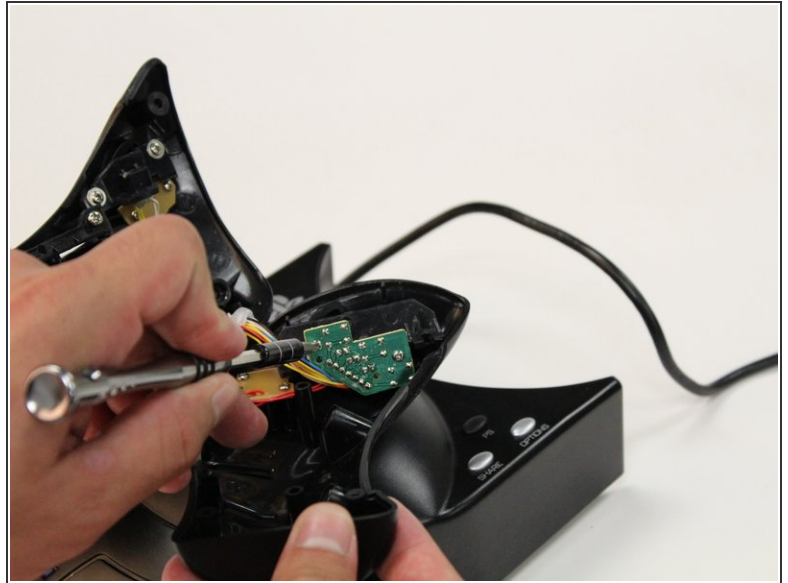
## Step 4



- Remove exterior panel from the throttle by using your hands to gently pull the panel away.

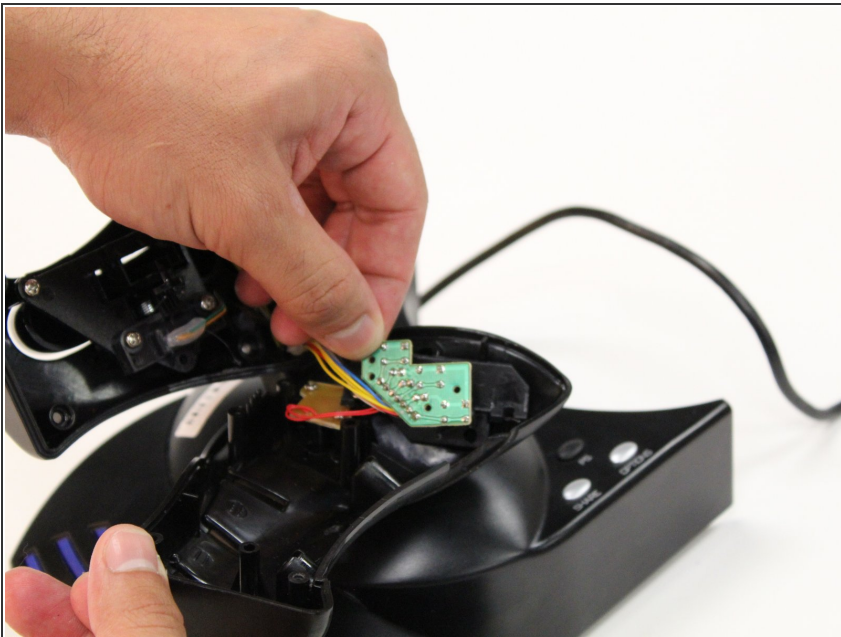


## Step 5



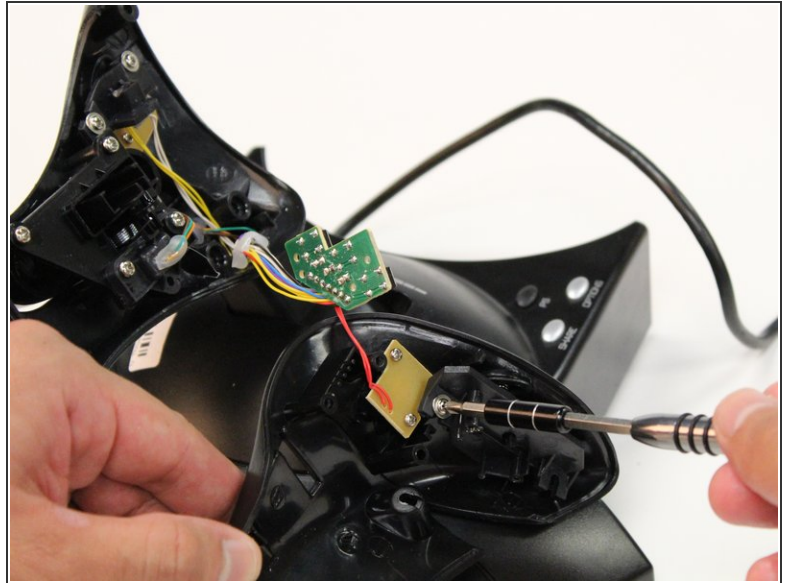
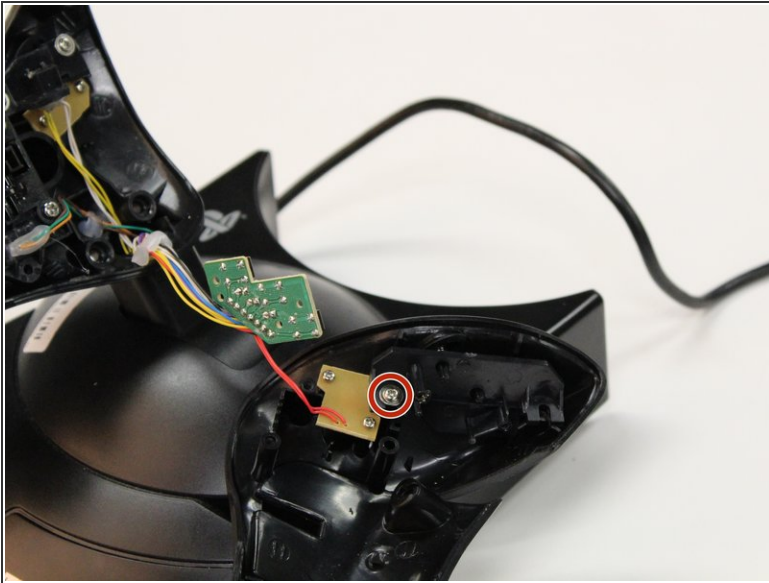
- Remove the two 6 mm J1 JIS head screws from the circuit board.

## Step 6



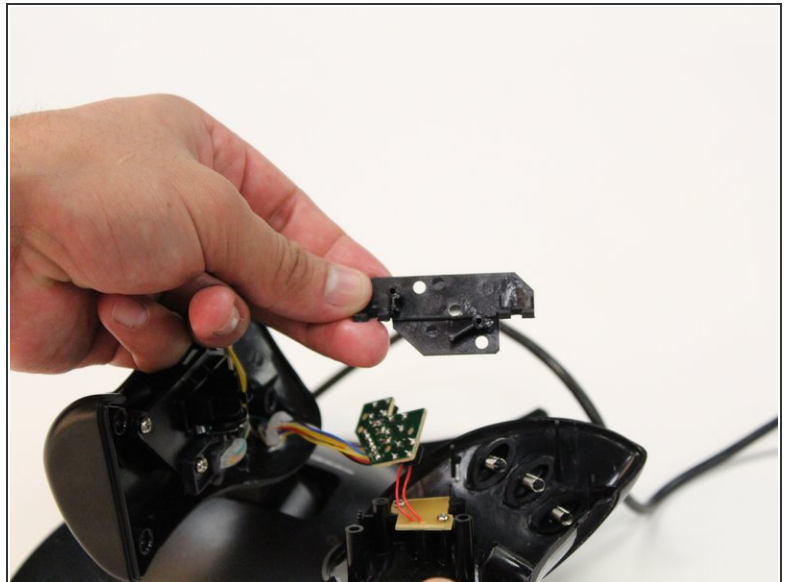
- Carefully remove the circuit board.

## Step 7



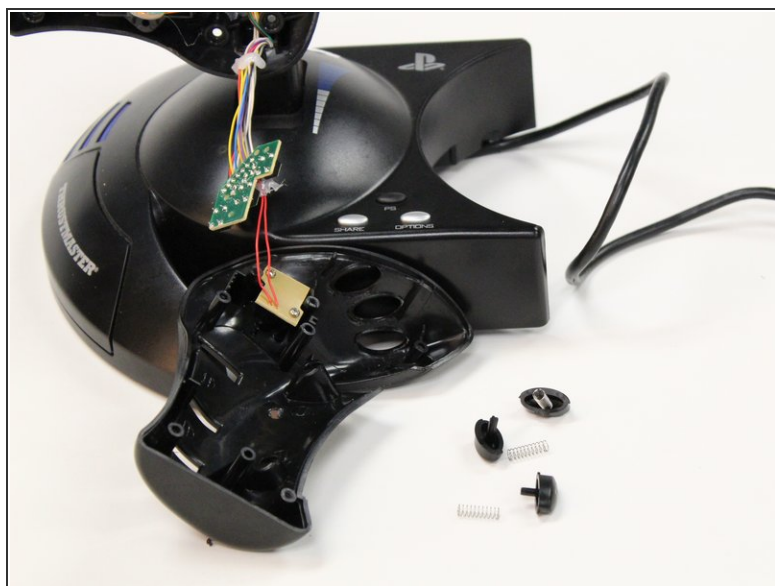
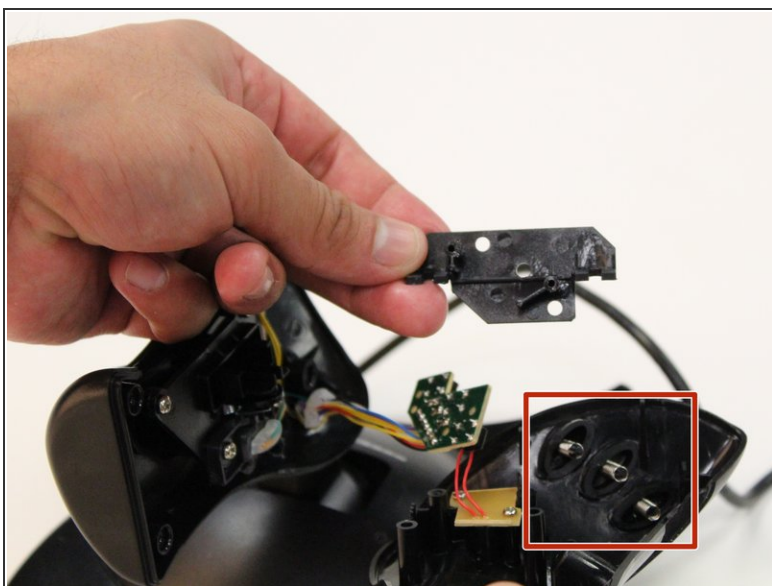
- Remove the 6 mm J1 JIS head screw that is attached to the black plastic cover.

## Step 8




- Remove black plastic cover.

## Step 9



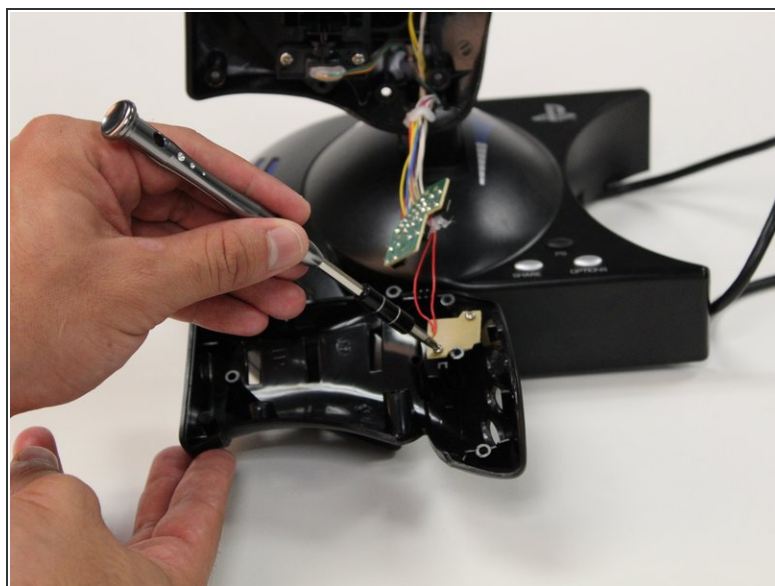
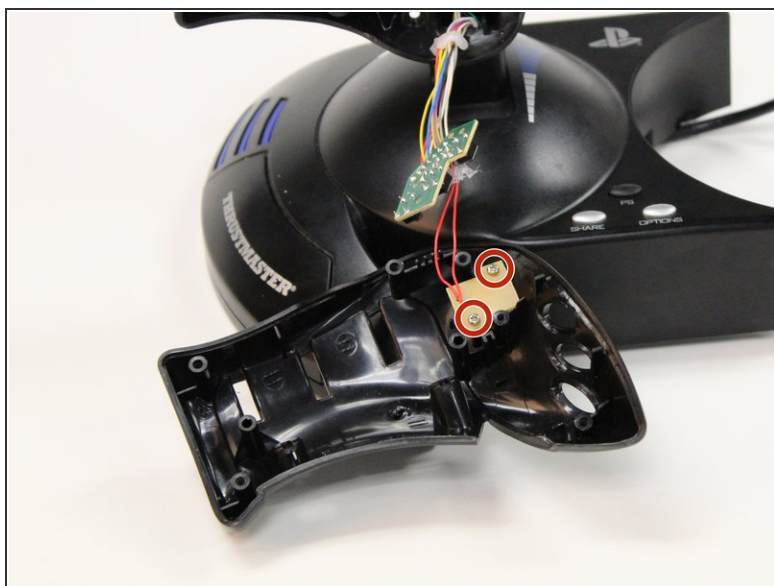
- Once the black plastic cover is removed, push the buttons inward from the outside of the device.

 Be aware of the springs. They are small and easy to lose.

 This step only replaces the x, square, and circle buttons.



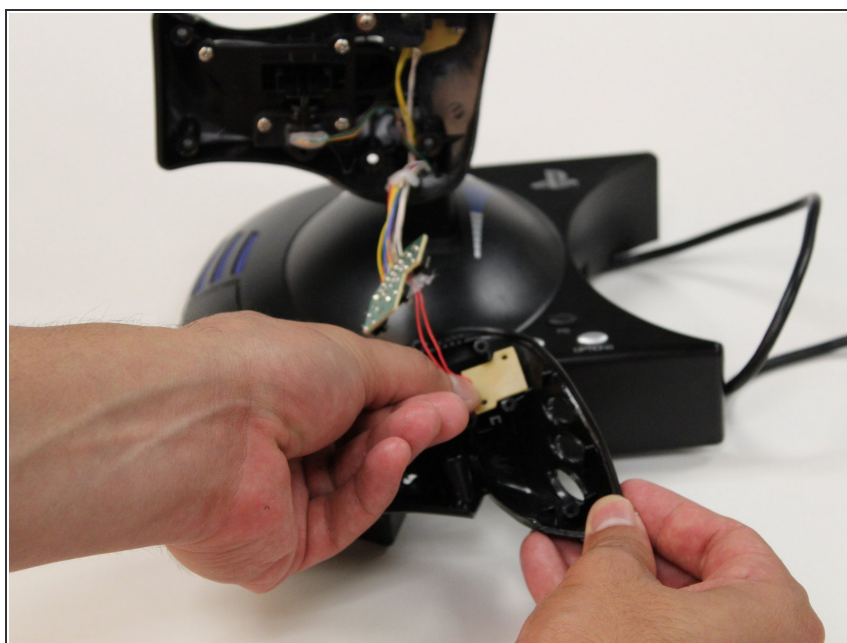
## Step 10



- Remove the two 6 mm J1 JIS head screws that are attached to the tan plastic cover.

**i** Removal of the screws will detach the exterior panel from the device.

## Step 11



- Carefully remove tan plastic cover.



## Step 12



- Once the black panel is disconnected, push the triangle button inward from the outside of the exterior panel.

To reassemble your device, follow these instructions in reverse order.