



Thrustmaster T Flight Hotas 4 R2 & L2 Buttons Replacement

This guide will show you how to replace the R2 & L2 buttons on the throttle.

Written By: Crystal Nguyen



INTRODUCTION

Replacing unresponsive R2 & L2 buttons on the throttle will help with game play.



TOOLS:

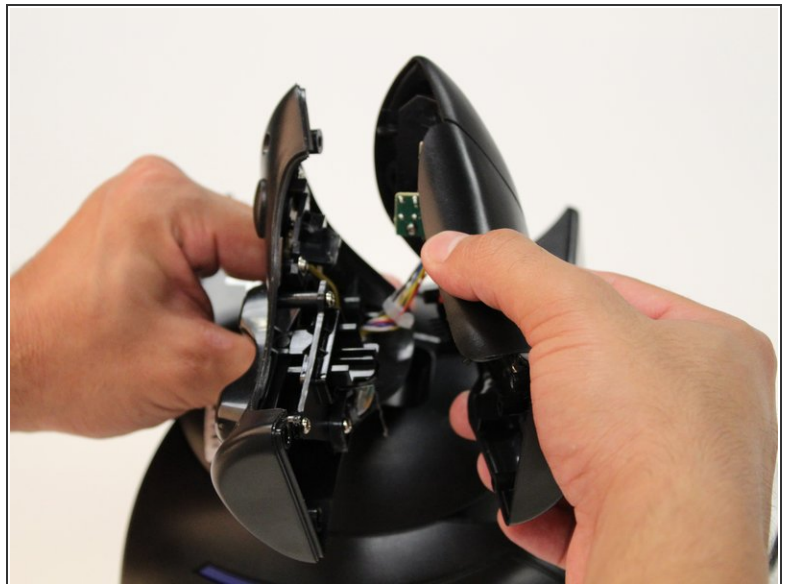
- [JIS #1](#) (1)
-

Step 1 — J1 Screws on Throttle



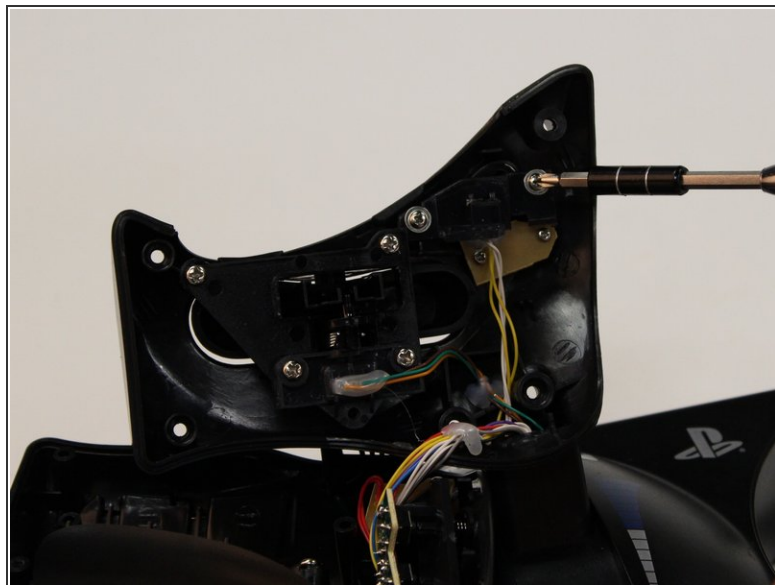
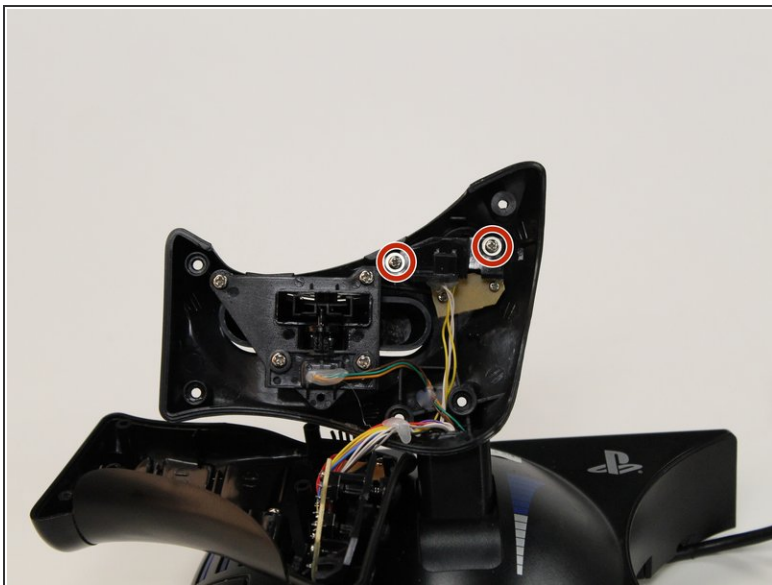
- ⓘ Be sure to disconnect the controller from the power source before disassembling.
- Remove the five 15 mm J1 JIS head screws from the front of the throttle.

Step 2 — Throttle Panel



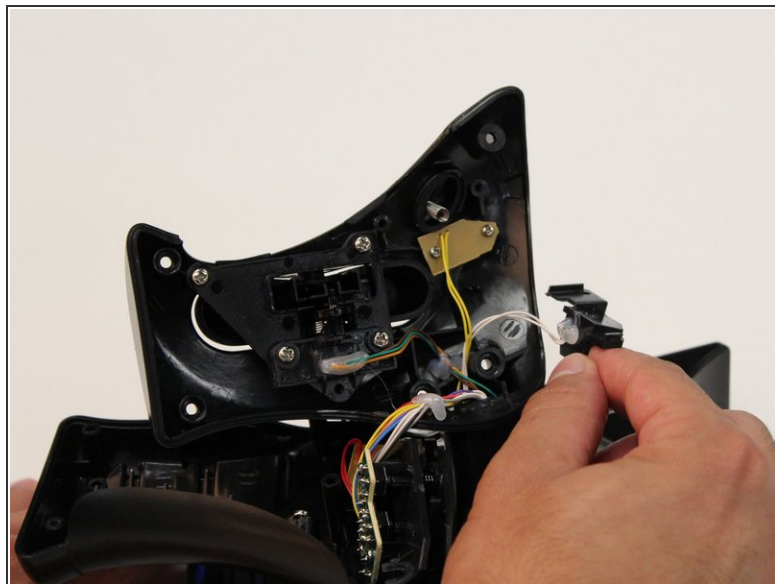
- ⓘ Be sure to disconnect the controller from the power source before disassembling.
- Using your hands, pull away the panel from the throttle.

Step 3 — R2 & L2 Buttons



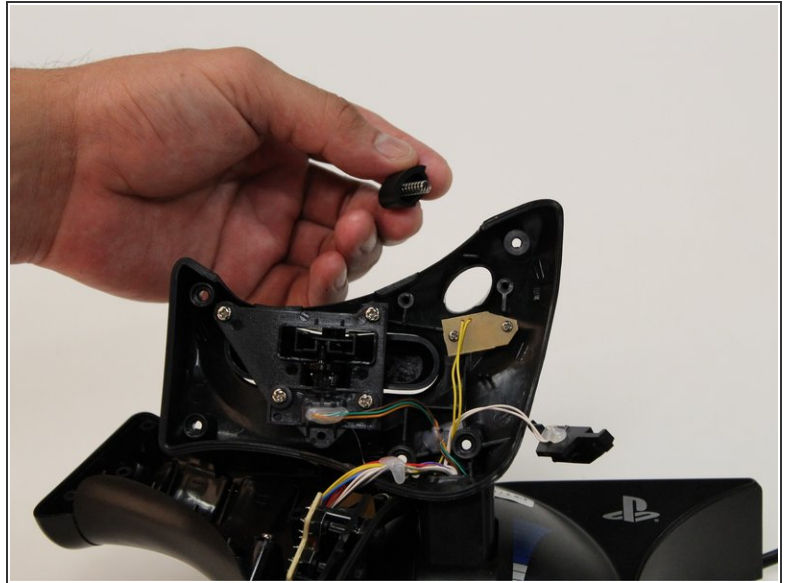
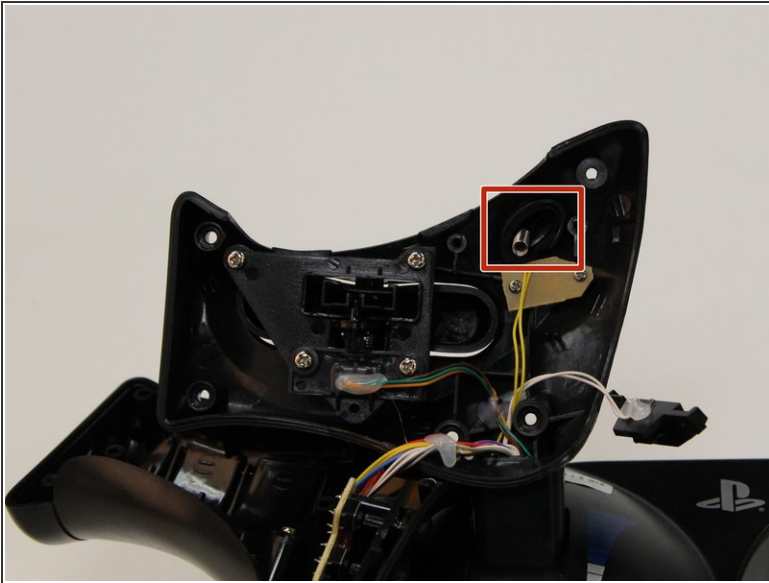
- Remove the two 7 mm J1 JIS head screws from the panel covering the buttons.

Step 4



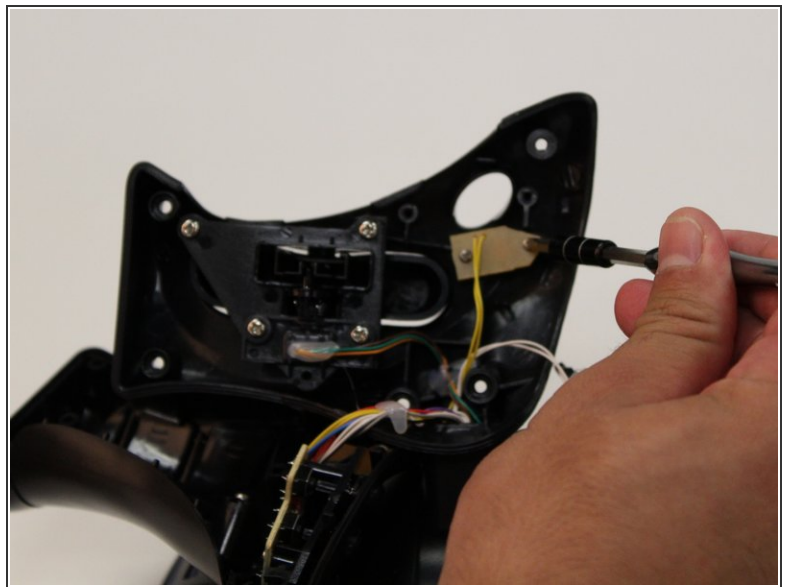
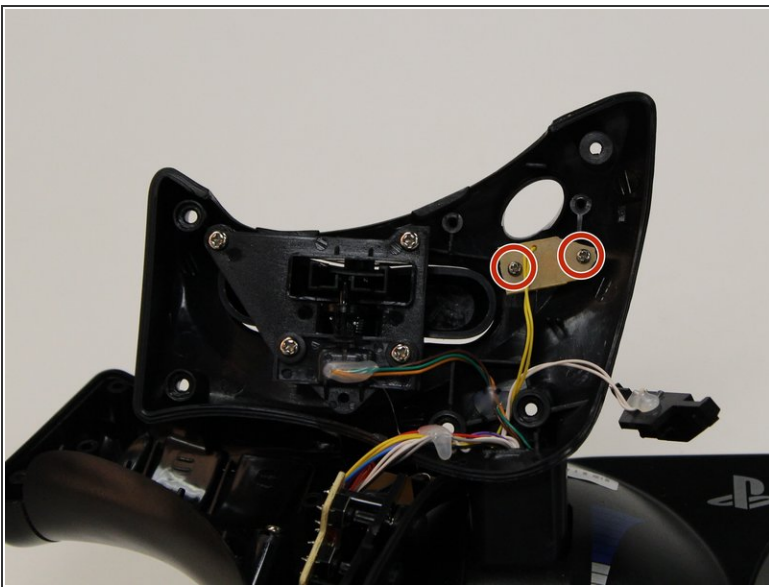
- Pull the panel that is covering the R2 button away from the throttle.

Step 5



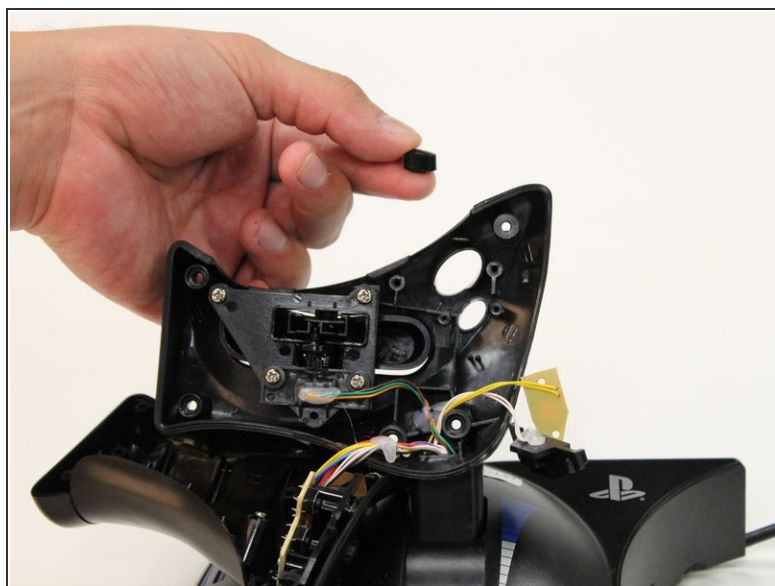
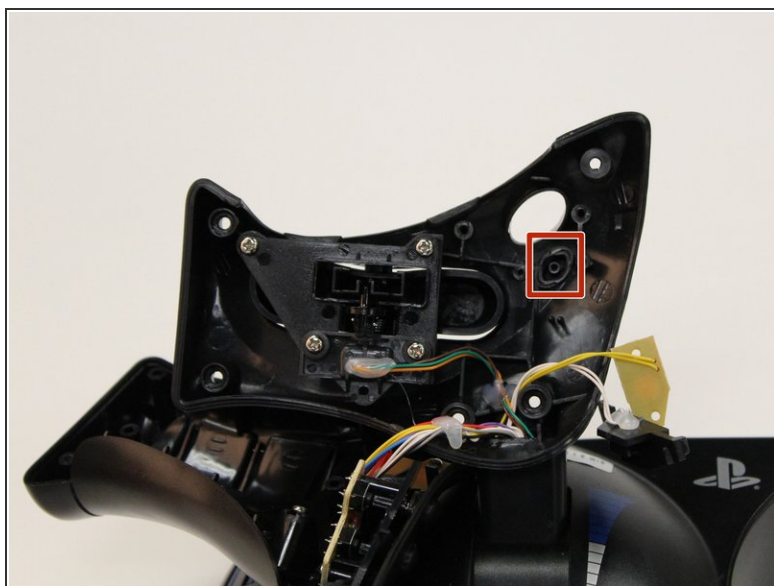
- Carefully push the R2 button from the outside of the panel.
- ⓘ Be cautious of the spring attached to the button as it can be easily lost.

Step 6



- Remove the two 4 mm J1 JIS head screws from the panel covering the L2 button.

Step 7



- Carefully push the L2 button from the outside of the panel.
- ⓘ Be cautious of the spring attached to the button as it can be easily lost.

To reassemble your device, follow these instructions in reverse order.