



Thrustmaster T Flight Hotas 4 Throttle Panel Replacement

Pulling apart the panel will allow you to get to the interior of the throttle.

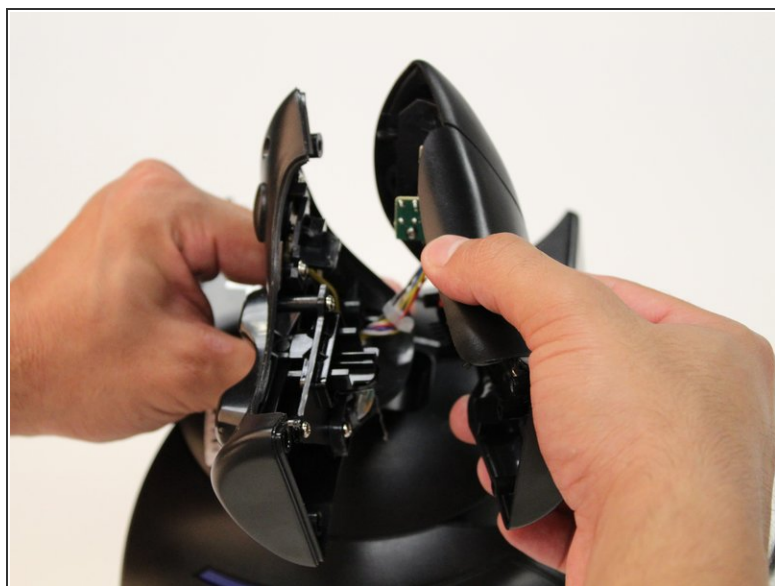
Written By: Crystal Nguyen



INTRODUCTION

You must pull the panels of the throttle apart in order to get to the interior.

Step 1 — Throttle Panel



- ⓘ Be sure to disconnect the controller from the power source before disassembling.
- Using your hands, pull away the panel from the throttle.

To reassemble your device, follow these instructions in reverse order.