



# InFocus Screenplay 4805 Lamp Replacement

This guide shows how to replace the projector's...

Written By: Marilyn Urness



# INTRODUCTION

This guide shows how to replace the projector's bulb if you are experiencing no image being betrayed by the projector. You will need a replacement bulb and an iFixit tool kit.

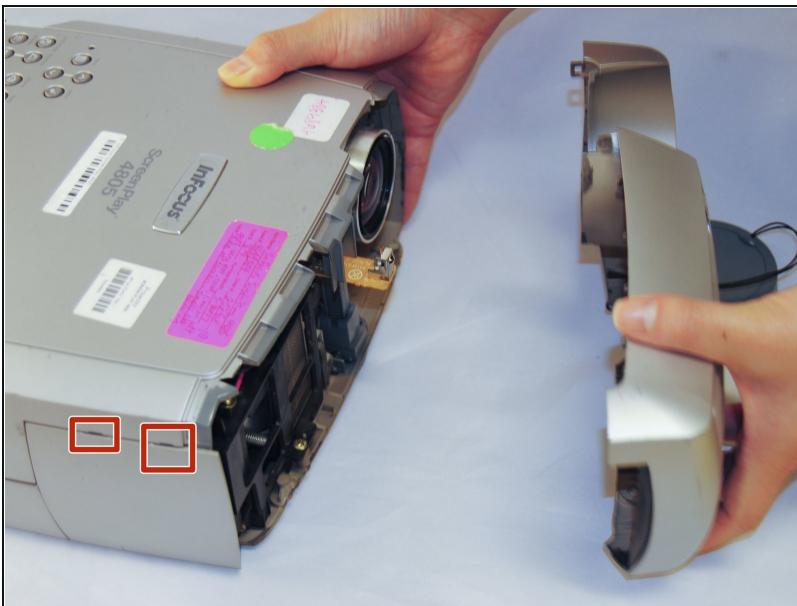
## TOOLS:

Metal Spudger (1)  
6-in-1 Screwdriver (1)

## PARTS:

Replacement bulb (1)

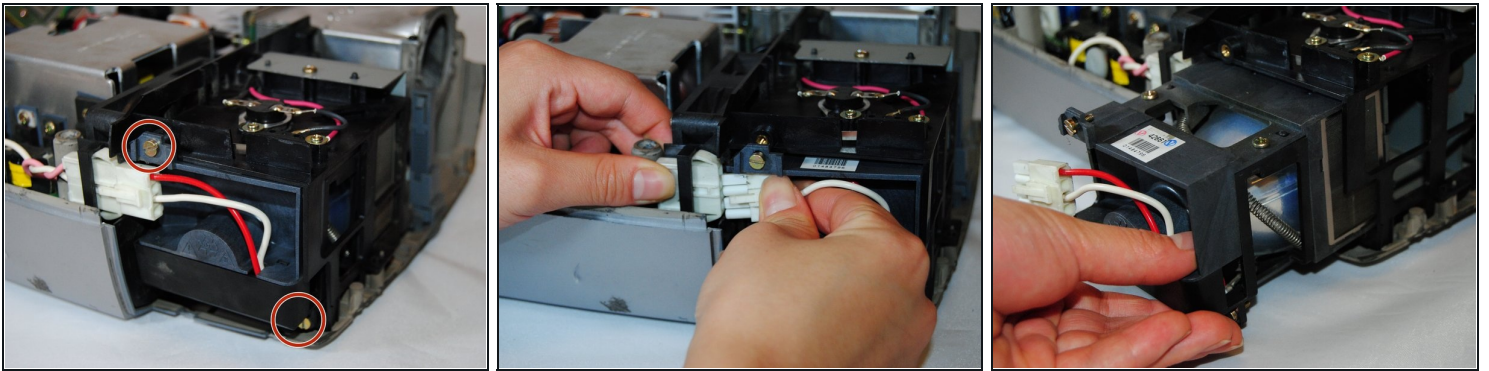
### Step 1 — Remove the lamp door



 **Front panel assembly removal is not required.**

- To remove the lamp door, use a metal or plastic pry tool and unclip the lamp door from the projector. Set this aside for reassembly.

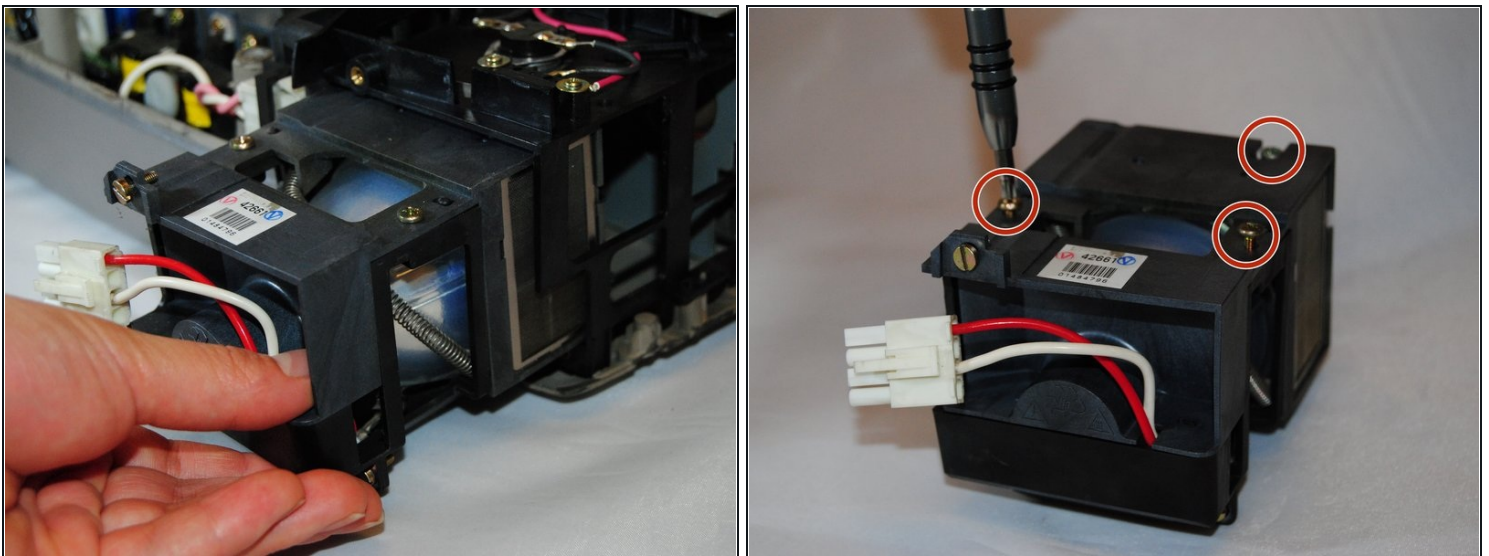
## Step 2 — Disconnect the lamp



**⚠ If you are replacing the lamp as an assembly, follow this guide in reverse from this step.**

- Remove the two gold 1 cm screws and washers on the side of lens housing using the 4.0 flat-head bit
- Pinch the white wire tab to gently detach the side that connects with the lens housing.

## Step 3 — **\*\*REBUILD ONLY\*\*** Housing disassembly

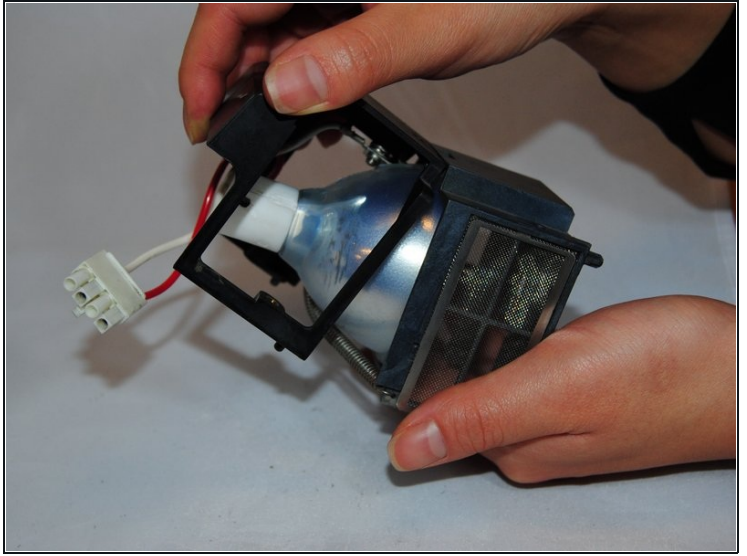
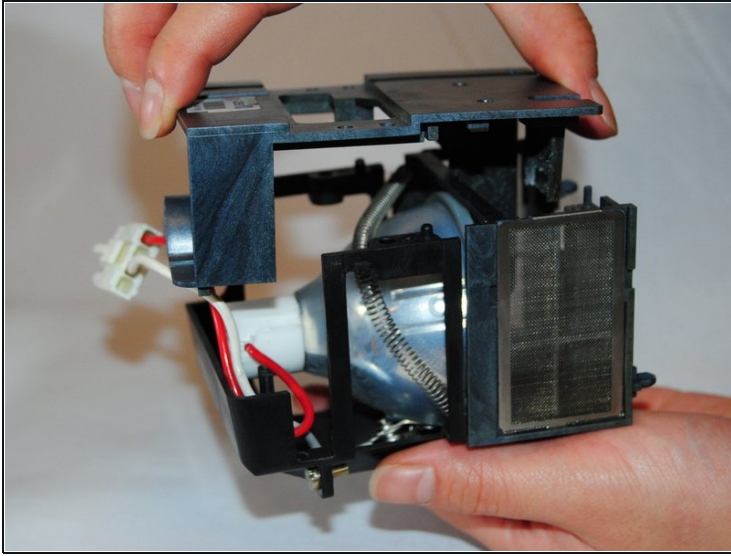


**⚠ This step is only required when rebuilding the old lamp with a replacement bulb.**

- Slide the bulb housing out of the projector.
- Use the Phillips #1 screwdriver to remove the three 1 cm gold screws on the bulb housing.



#### Step 4 — **\*\*REBUILD ONLY\*\*** Housing disassembly

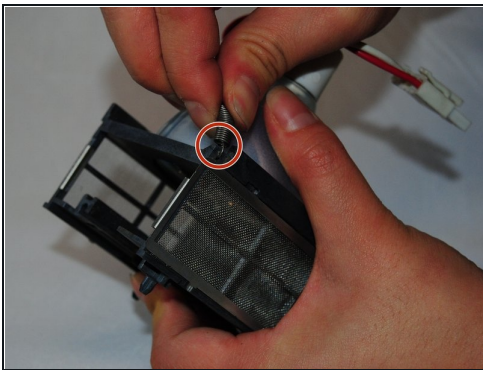


**⚠ This step is only required when rebuilding the old lamp with a replacement bulb.**

- Gently pull the top of the bulb housing off.
- Lift up the middle of the bulb housing to remove it.

**⚠ Be careful of loose parts, such as the metal housing and the glass focusing lens.**

#### Step 5 — **\*\*REBUILD ONLY\*\*** Housing disassembly



**⚠ This step is only required when rebuilding the old lamp with a replacement bulb.**

- Unhook the spring from the bulb housing.
- Gently remove the bulb.

---

To reassemble the device, follow these instructions in reverse order.