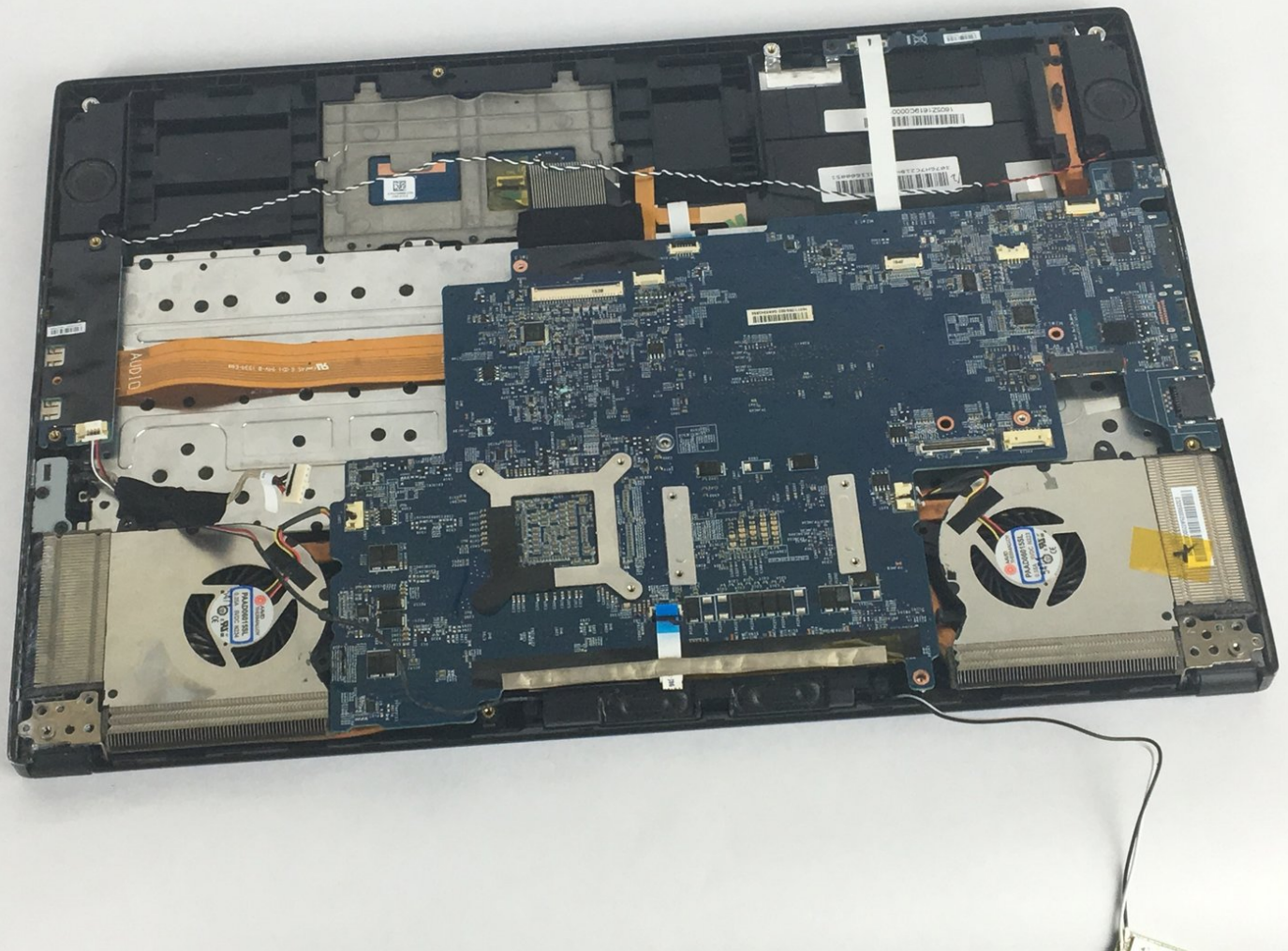




MSI GS60 6QE GHOST PRO 4K Motherboard Replacement

This guide replaces the motherboard which in turn also replaces the CPU and GPU which are integrated with the board.

Written By: Azher Hamid



INTRODUCTION

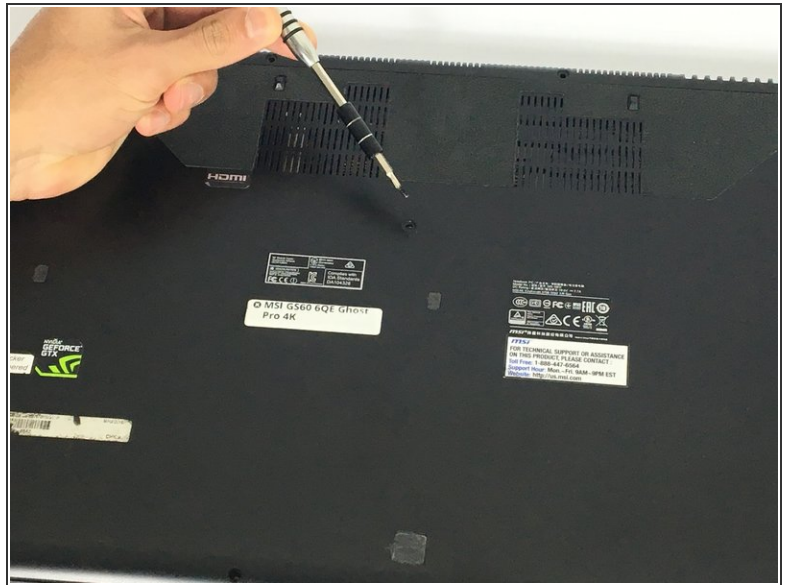
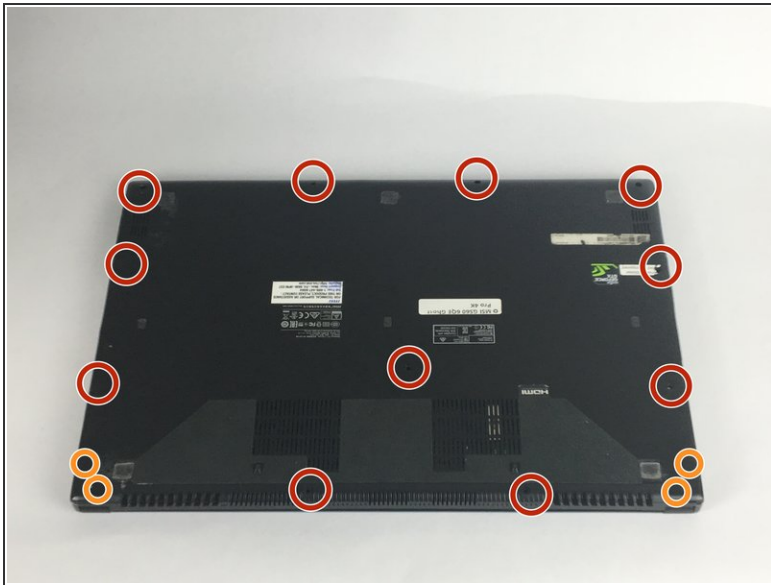
The motherboard replacement is the most critical and difficult repair process of this laptop. Gaining access to laptop's motherboard allows the user to also replace the CPU/GPU fan or the RAM if need be.



TOOLS:

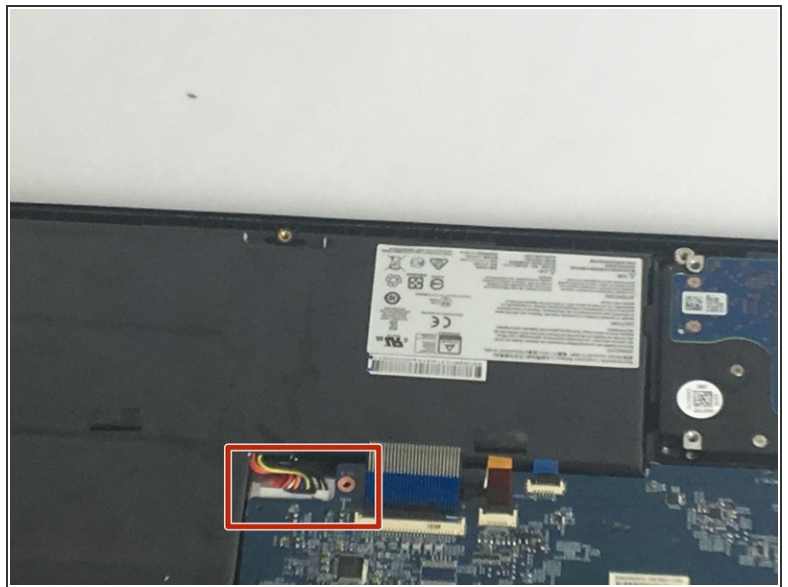
- [Phillips #0 Screwdriver](#) (1)
-

Step 1 — Battery



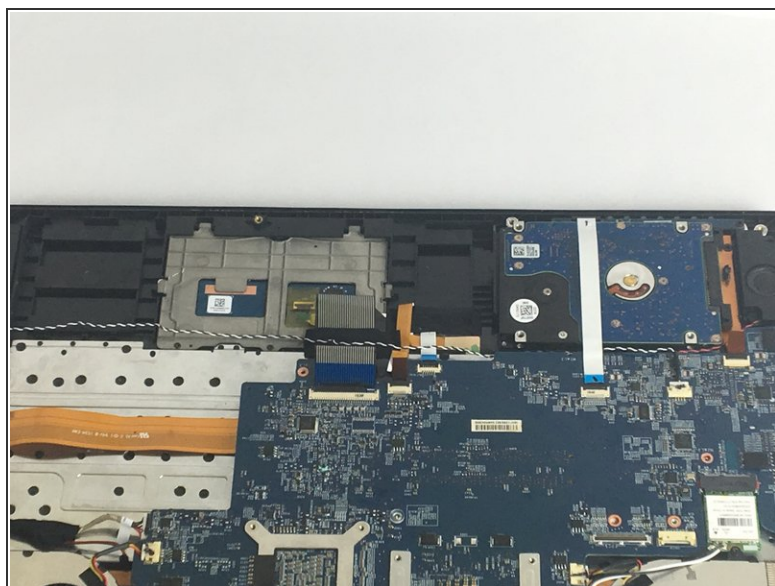
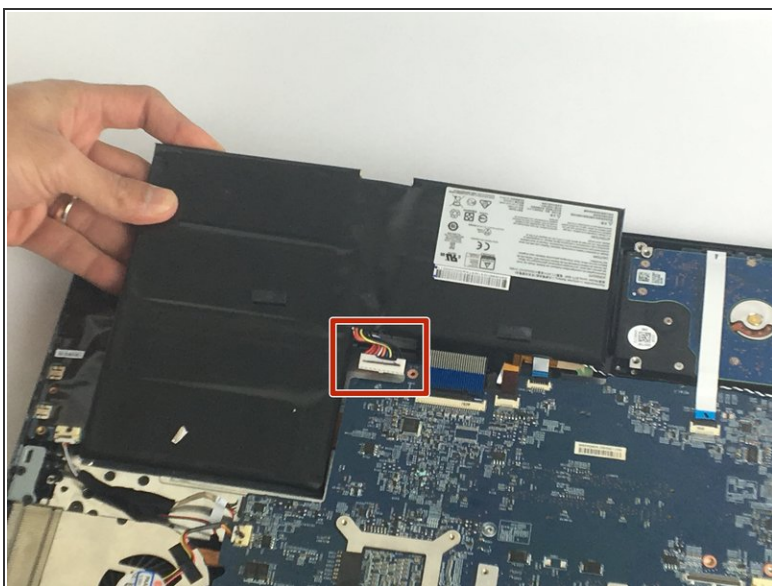
- Remove the eleven 5mm screws with a Phillips #0 bit.
- Remove the four 2.5mm screws with a Phillips #0 bit.

Step 2



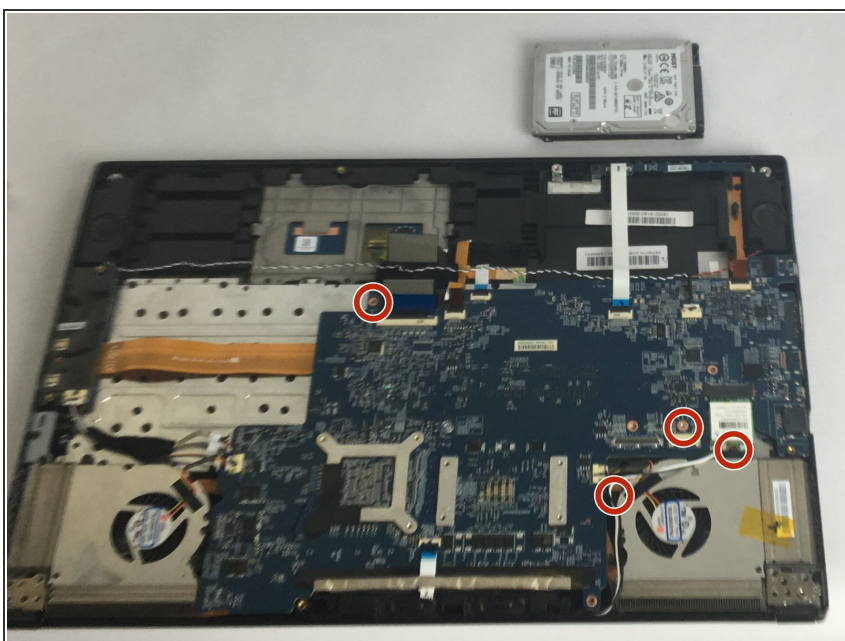
- After opening the bottom plate, locate the battery and the battery connection.

Step 3



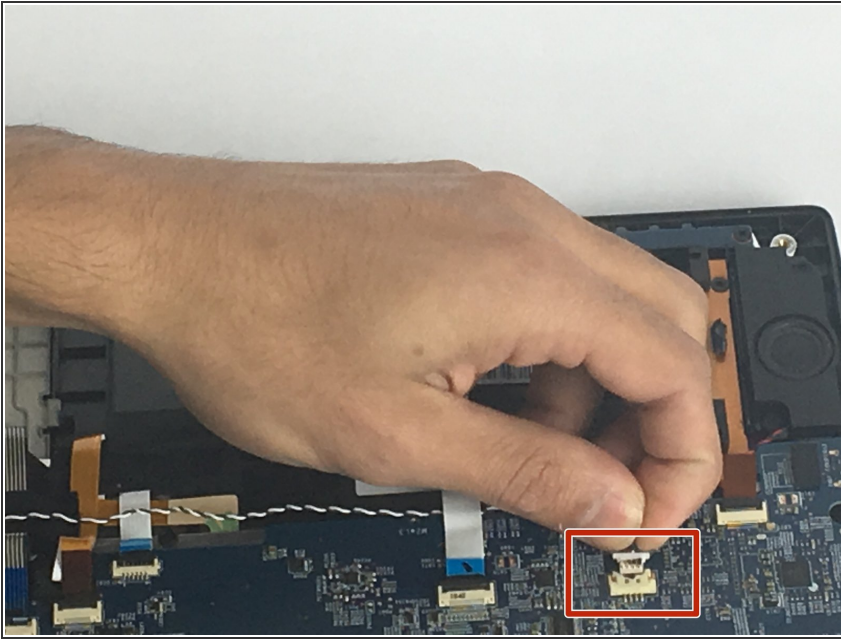
- Unplug the battery connection carefully from the motherboard, and remove the old battery.

Step 4 — Motherboard



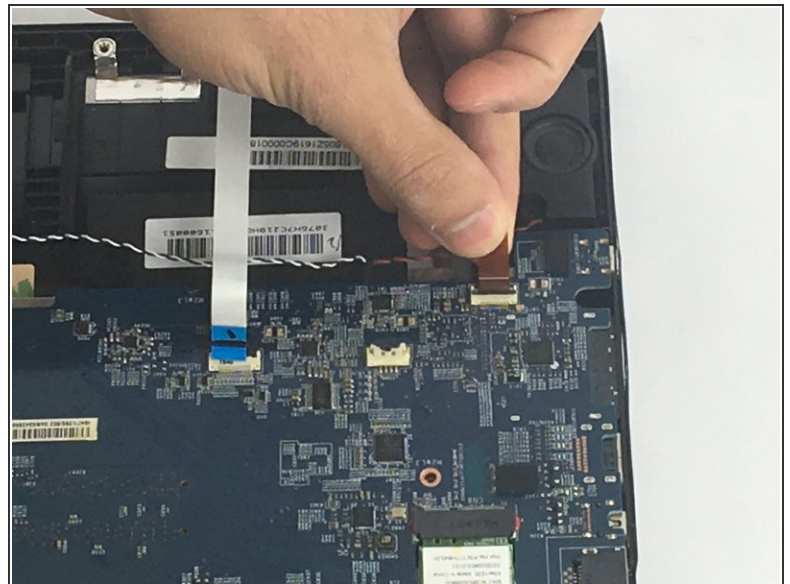
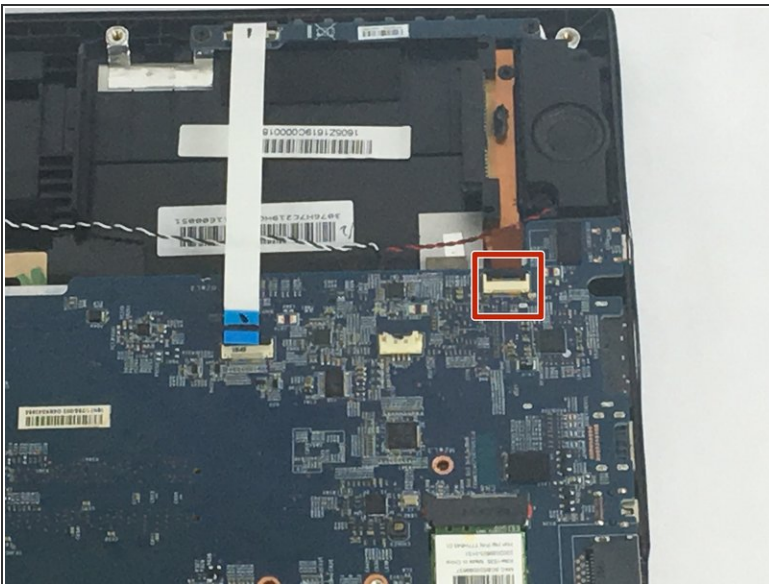
- Remove the four 2.5 mm screws from the motherboard.

Step 5



- Unplug the speaker wire.

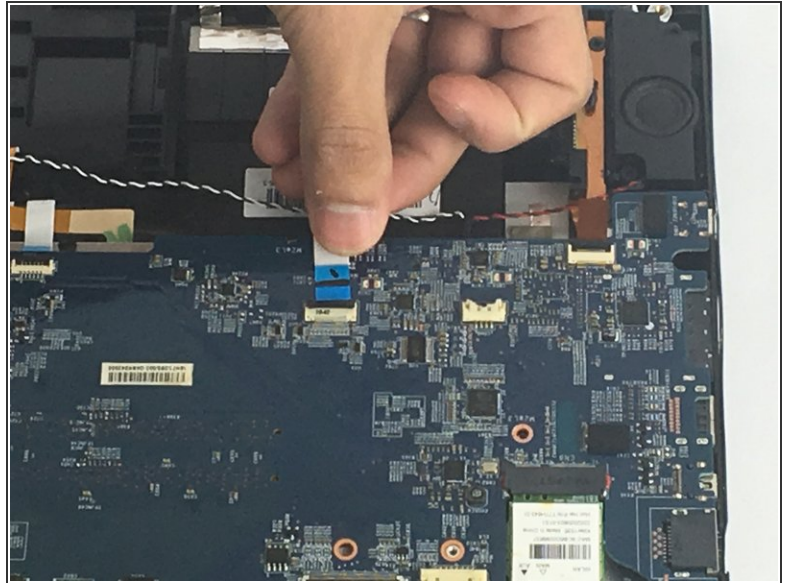
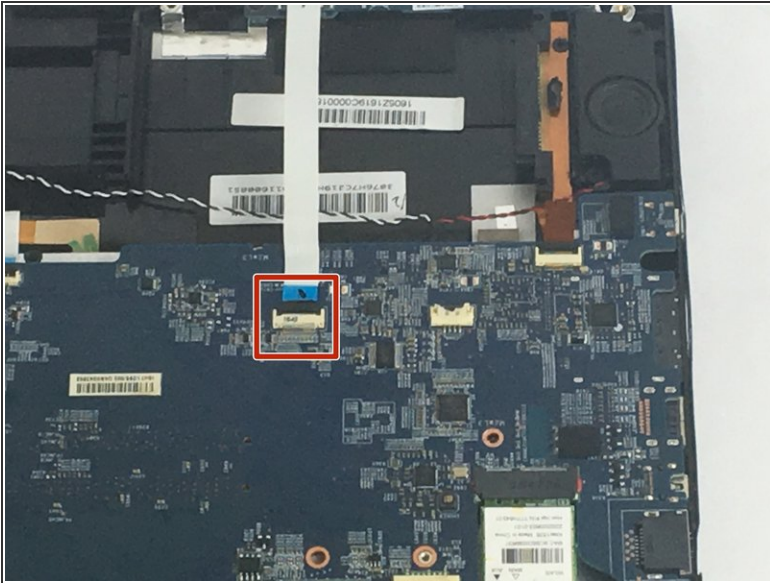
Step 6



- Gently lift the selected black tab that connects the cable onto the board and then slide out the cable.

⚠ Be careful not to break the black cover.

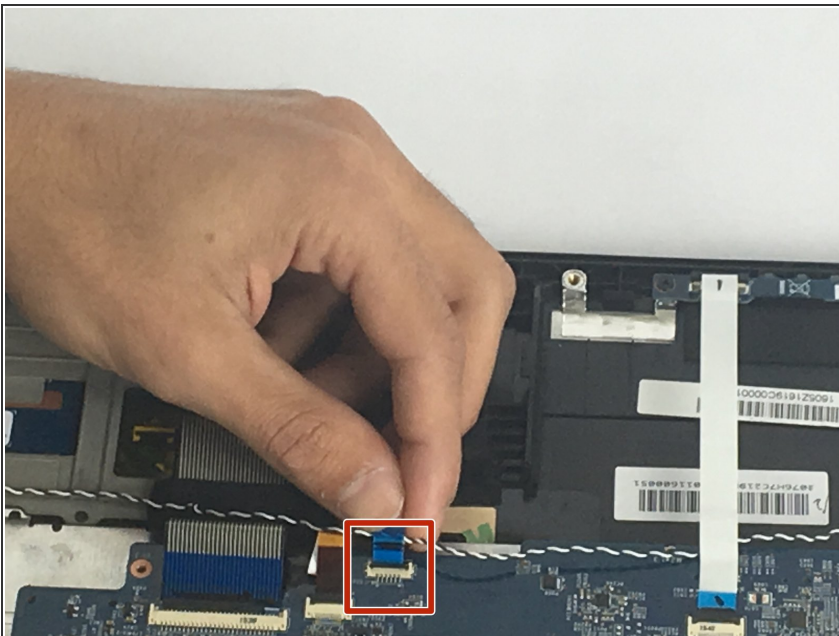
Step 7



- Gently lift the selected black tab that connects the cable onto the board and then slide out the cable.

⚠ Be careful not to break the black cover because it can be broken easily

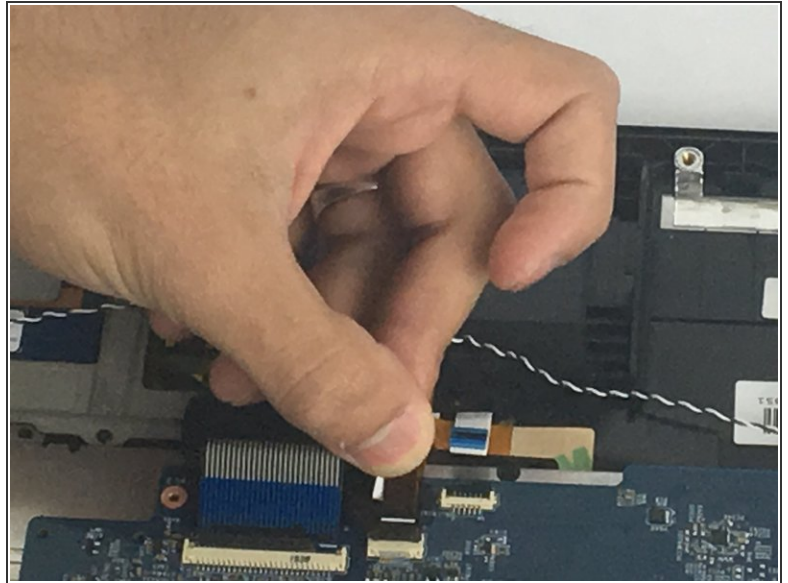
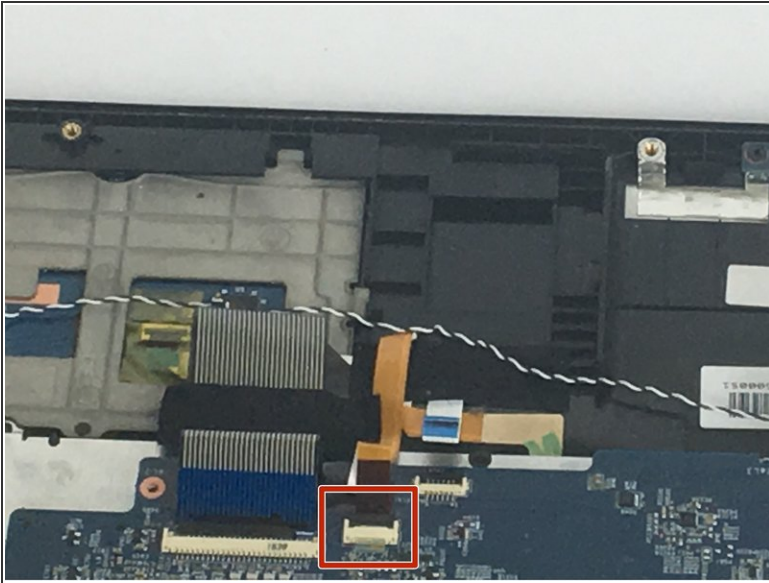
Step 8



- Gently lift the selected black tab that connects the cable onto the board and then slide out the cable.

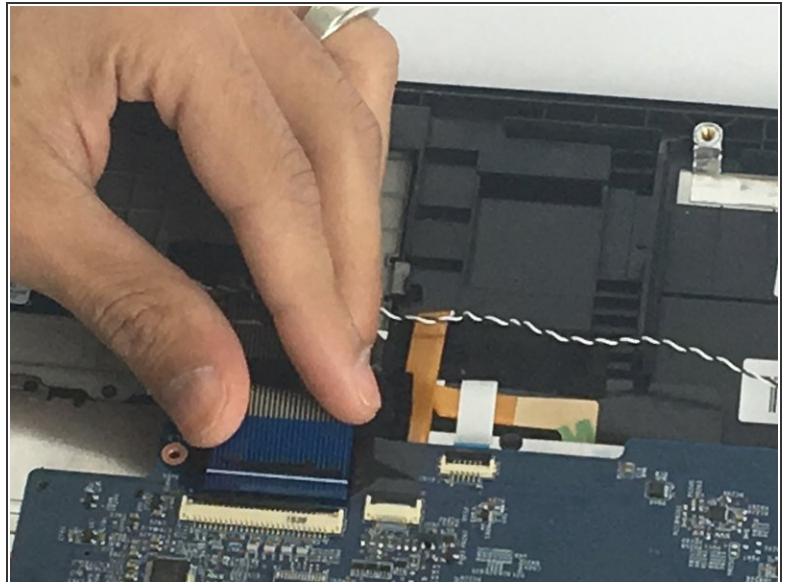
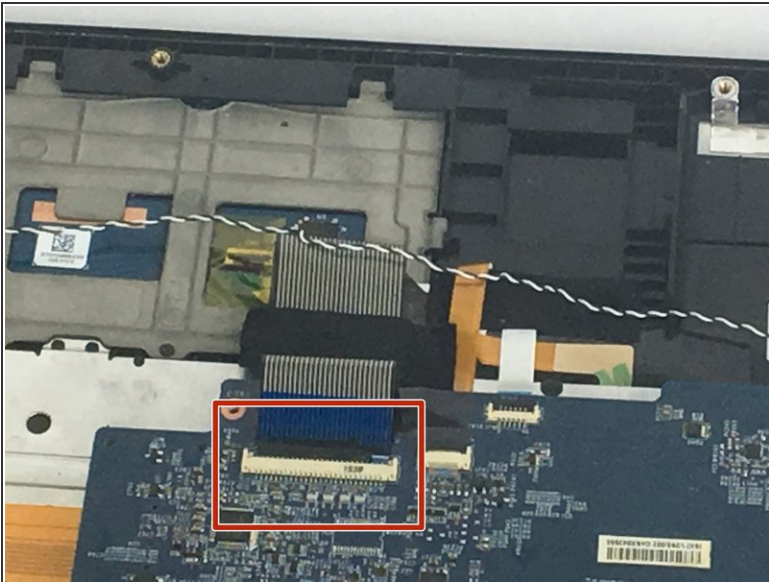
⚠ Be careful not to break the black cover. lift it up gently

Step 9



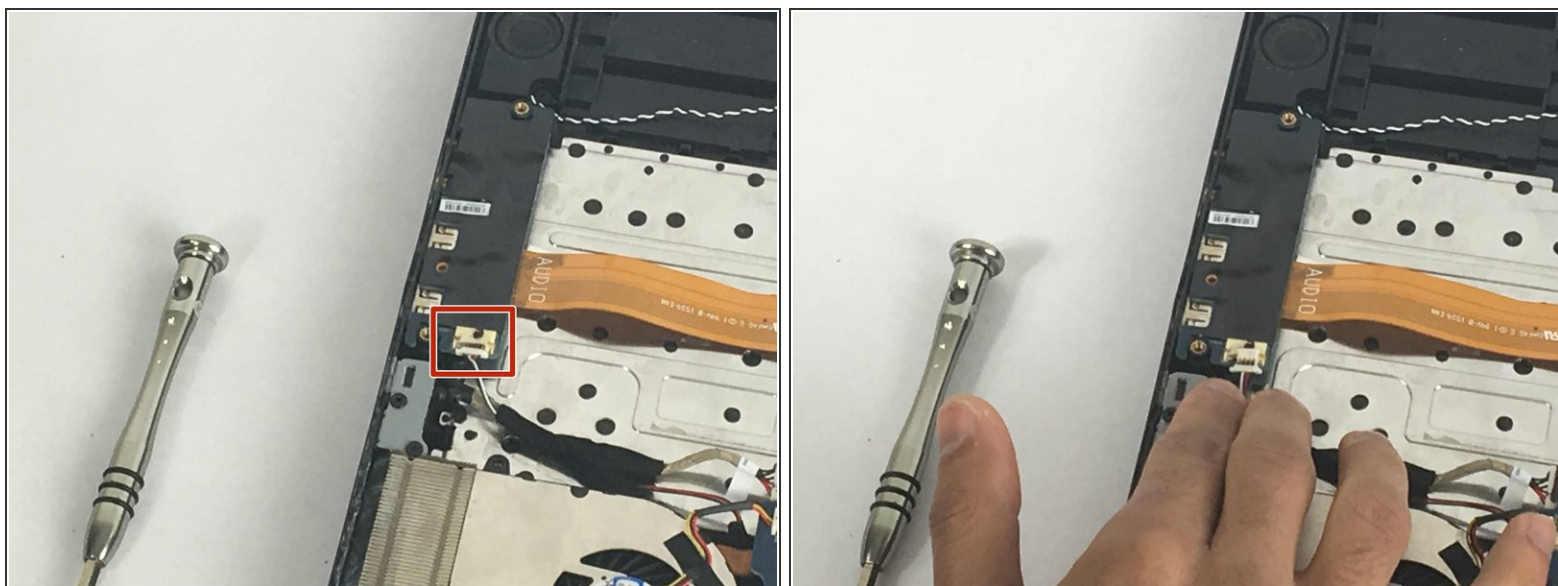
- Gently lift the selected black tab that connects the cable onto the board and then slide out the cable.

Step 10



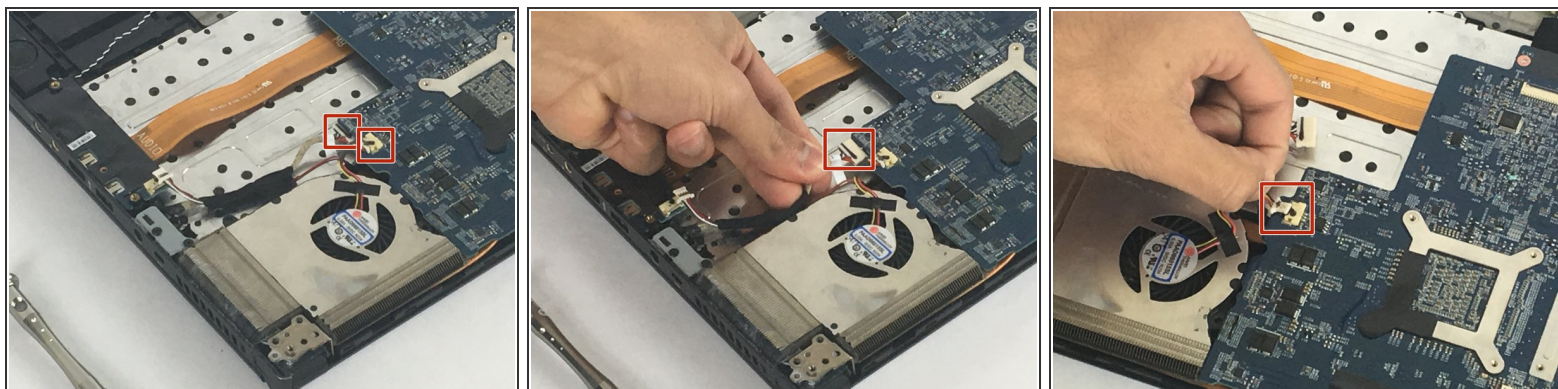
- Gently lift the selected black tab that connects the cable onto the board and then slide out the cable.

Step 11



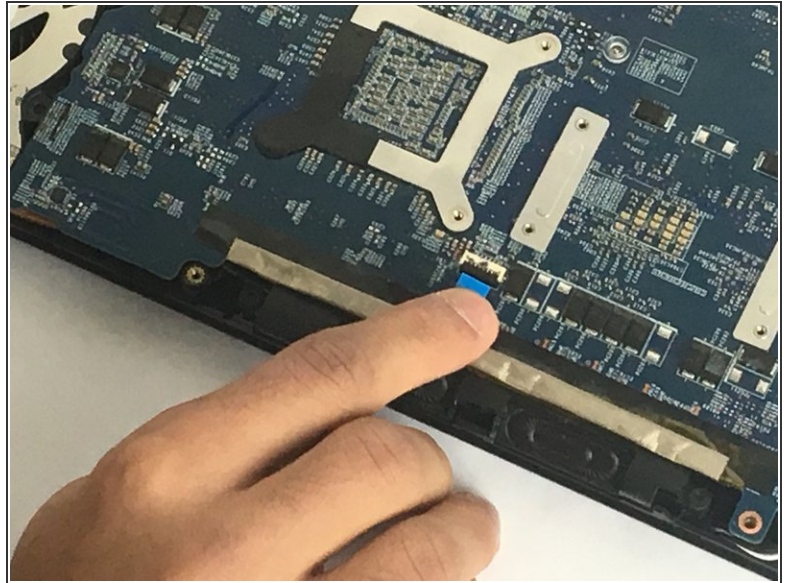
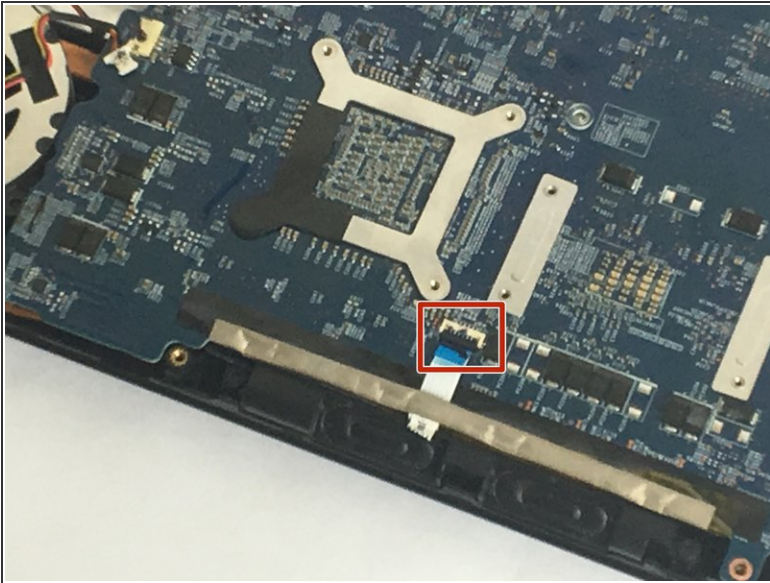
- Unplug the selected cable

Step 12



- Locate and unplug the selected cables.

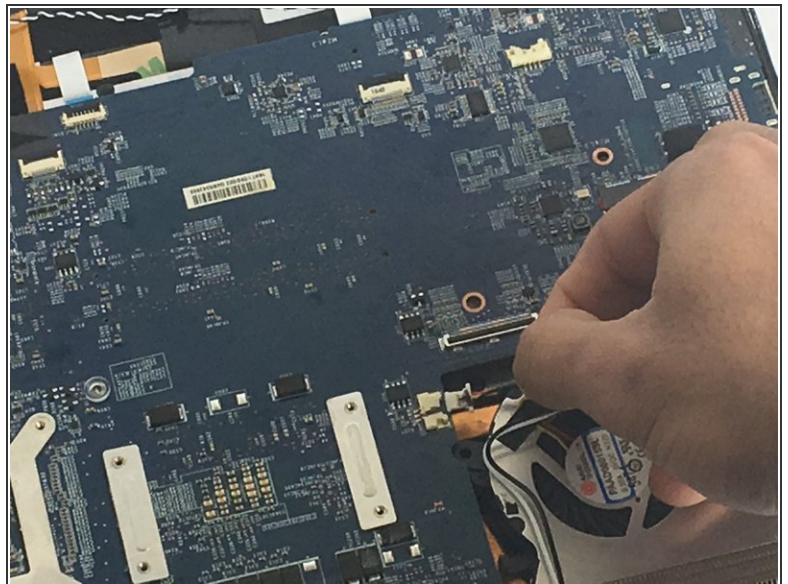
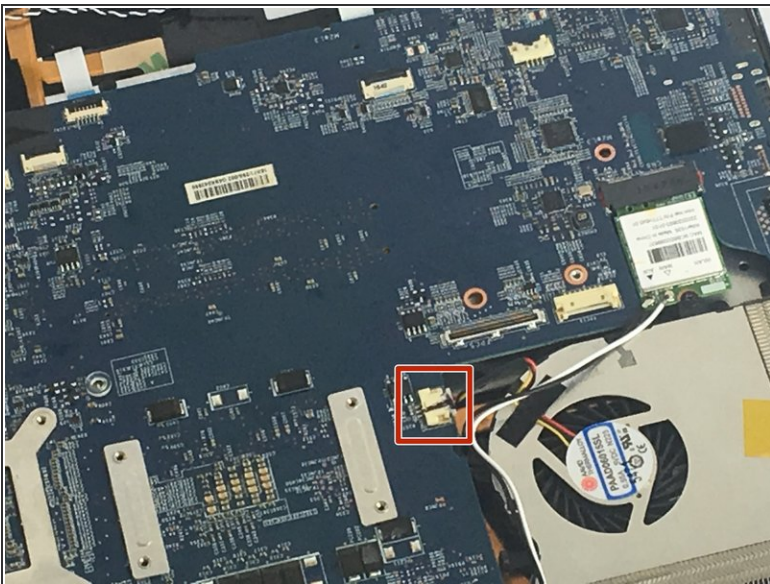
Step 13



- Gently lift the selected black tab that connects the cable onto the board and then slide out the cable.

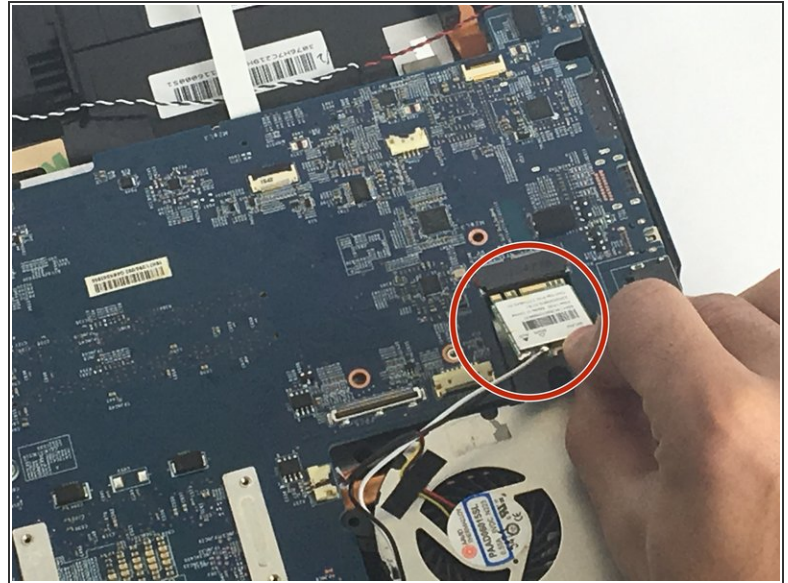
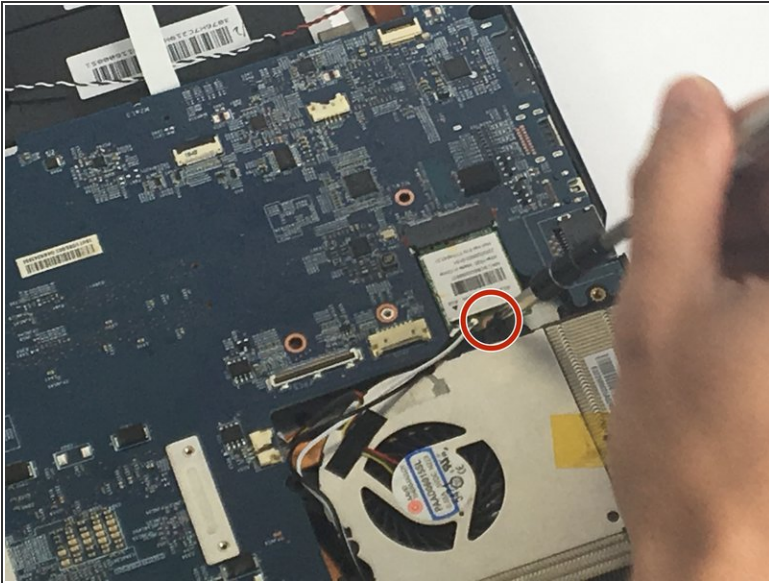
⚠ Unplug it carefully without breaking the black cover.

Step 14



- Gently unplug the selected cable

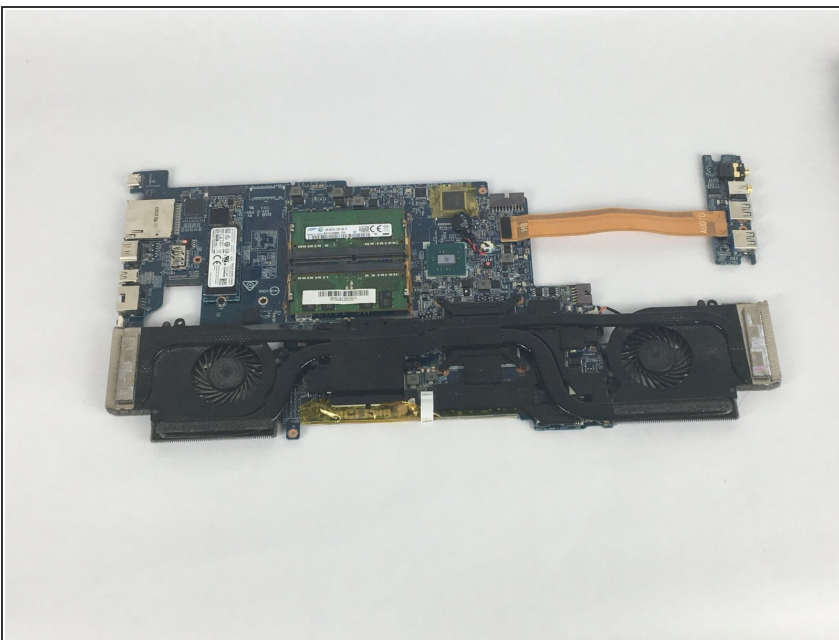
Step 15



- Gently remove the electronic component by sliding it out and lifting it up after unscrewing the 2.5 mm screw

⚠ Make sure you unscrew the screw first and unplug the chip from the motherboard. Do not disconnect the wires connected to the chip

Step 16



- After unplugging all of the cables and unscrewing all of the screws, gently remove the motherboard out of the computer chassis
- This part will take some effort but remember not to apply too much pressure on the motherboard as to not damage any of the small electrical components on the board

To reassemble your device, follow these instructions in reverse order.