



Hario Electric Buono Tea Kettle Disassembly

How to repair a Hario Electric Buono steel kettle after its power cord begins to fail, which occurs after about 4 years of heavy use.

Written By: Devon Murray



INTRODUCTION

When a Hario Electric Buono steel kettle's internal power cord begins to fray internally after being subjected to water damage and the natural bending curve of the wire's positioning, there is an easy way to fix the product rather than having to buy a new one or throw it away. This guide will walk one through the steps of opening, locating the appropriate wire, stripping and reconnecting the wire, repositioning it to avoid future disruptions, as well as putting the kettle back together.



TOOLS:

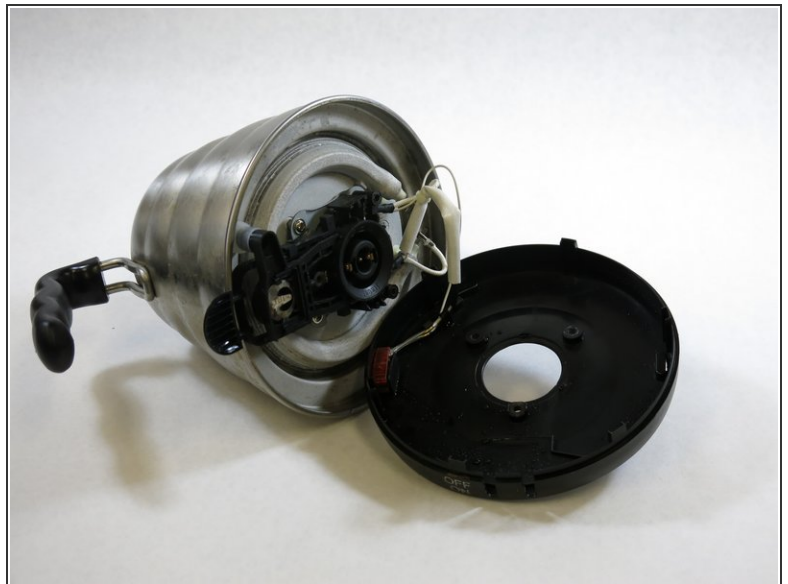
- [Wire Stripping/Crimping Tool](#) (1)
 - [Large Needle Nose Pliers](#) (1)
 - [Electrical Tape in 6 Assorted Colors](#) (1)
 - [Triangle 3 Screwdriver](#) (1)
 - [Phillips #00 Screwdriver](#) (1)
 - [Utility Scissors](#) (1)
-

Step 1 — Hario Electric Buono Tea Kettle Disassembly



- Unscrew the three screws on the base of the Hario kettle.
- ⓘ This step requires the use of a Phillips Head and a 3mm Triangular screwdriver.

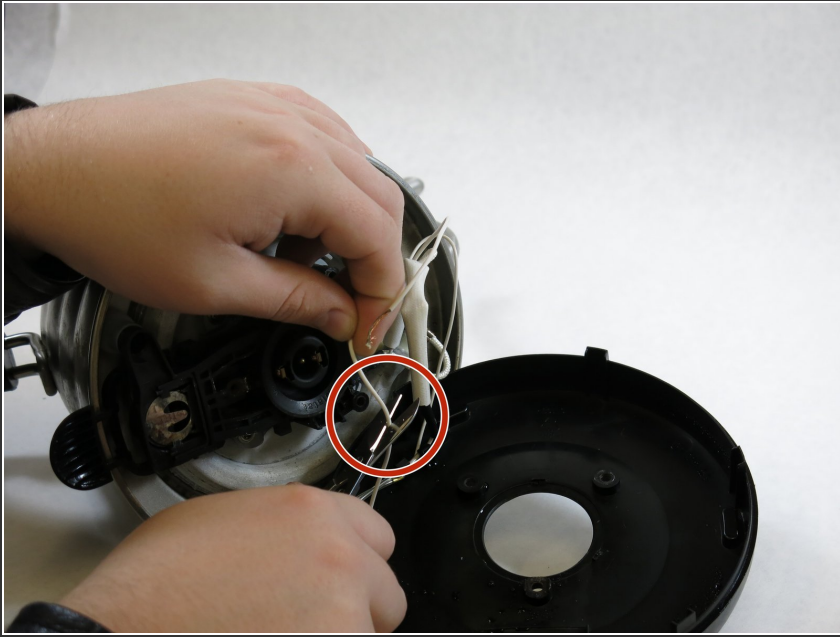
Step 2



- Detach the base of the kettle from the steel body, exposing the internal wires.

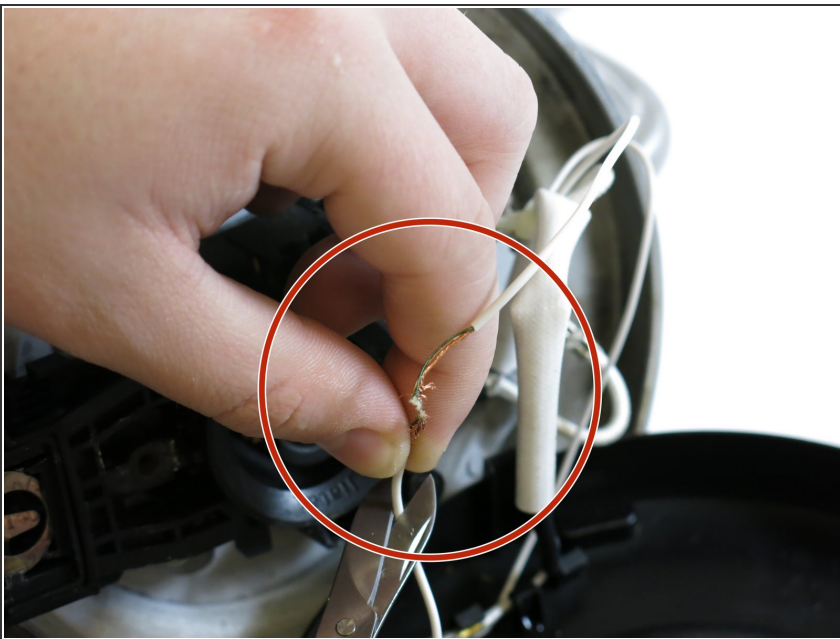
⚠ Be sure not to pull or twist the wires.

Step 3



- Find the split or malfunctioning wire that is connecting the base and the steel body of the kettle.
- In this case, it is the thin, white wire.

Step 4

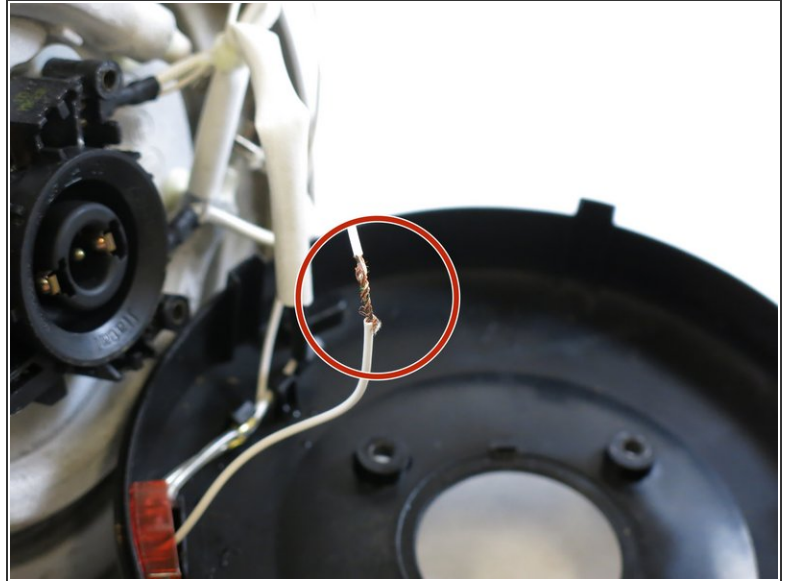
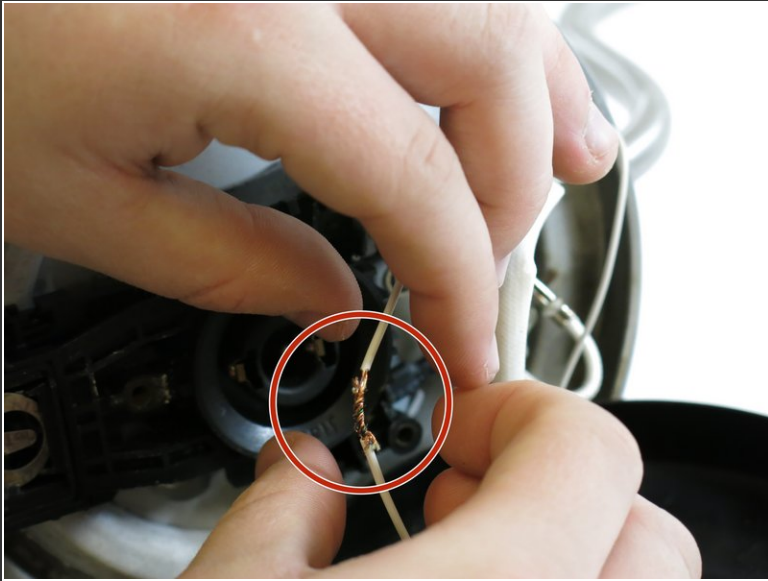



- Once the malfunctioning wire has been located, begin the process of stripping the coating of the wire.
- Lightly grasp the wire stripper in one hand and keep the wire taught with the other. Then pinch the wire lightly with the wire stripper and move it down the wire, grazing the outer coating of the wire each time.

⚠ It is important while stripping the wire, be careful not to cut the wire and only the white tubing around it.

ⓘ The wire stripper/small scissors are required for this step.

Step 5



- After you've stripped the broken wire and exposed the metal interior, reconnect it to the other end by twisting the exposed ends around each other.
 - To ensure that the wrapped wire does not come undone, apply electrical tape around the exposed part of the wire.
-  Electrical tape is suggested for this step.

Step 6



- Reattach the base of the kettle to the steel body, while making sure the newly repaired wire does not come undone.