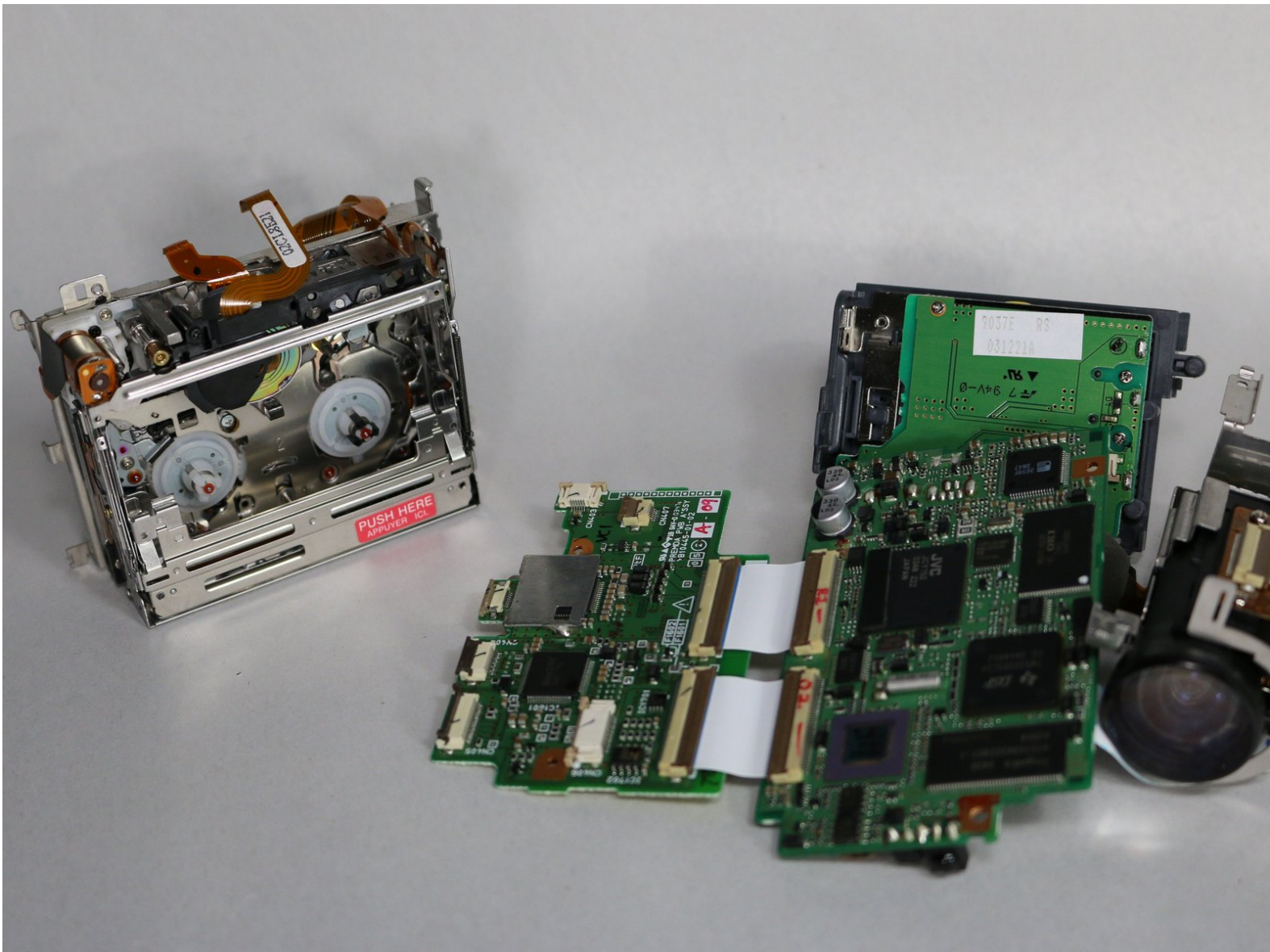




# JVC GR-D72U Cassette Holder Replacement

Replacement Guide for the cassette holder which is used for storing the recording of video.

Written By: Jonah Powers



---

## INTRODUCTION

Some of the mechanical parts in the cassette holder can come loose or become damaged. To remove it you will need a Phillips #000 screwdriver, small plastic opener, and small metal spudger.

This guide requires removing a lot of screws so it is important to keep track of which screw goes where. All screw heads are Phillips size #000.



### TOOLS:

- [Metal Spudger](#) (1)
  - [iFixit Opening Tools](#) (1)
  - [Phillips #000 Screwdriver](#) (1)
-

## Step 1 — Battery



- Locate button on bottom of camera.
- Slide button to the right.

## Step 2



- Pull the battery towards the bottom of the camcorder while lifting battery



## Step 3 — Lateral Function Port Panel



- Remove silver plate that says “Auto Light” on the top of the camera using a metal spudger.
- Remove the 3.1 mm screw.
- Remove the three 5.3 mm screws from the back of the camera.

## Step 4



- From the bottom of the camera remove the following four screws:
  - 5.3 mm
  - 3.1 mm
  - 5.1 mm
  - 3.5 mm

## Step 5



- Use the small plastic opening tool to remove the blue side cover piece.

## Step 6



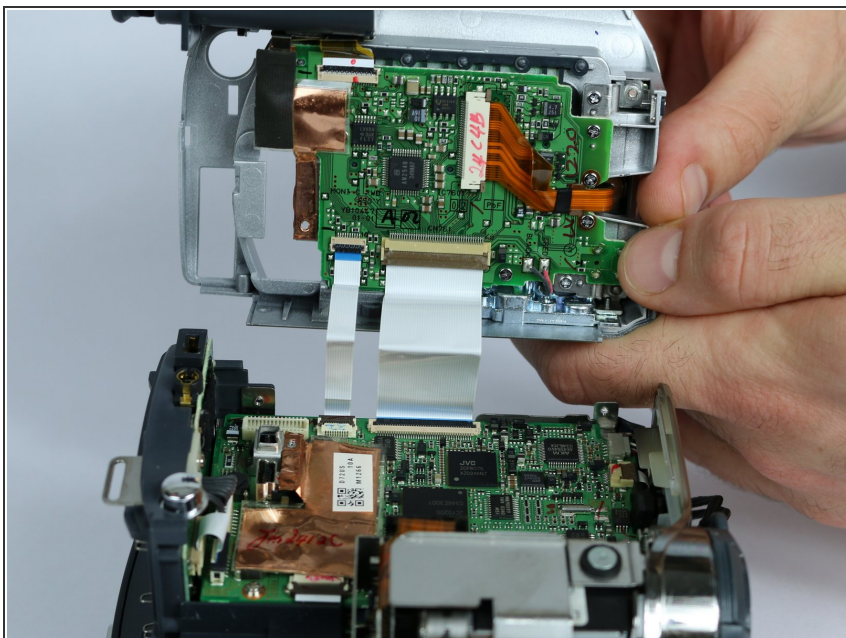
- Remove the 3.1 mm screw on top of the camera, closest to the LCD monitor.
- Remove the 5.4 mm screw next to the snapshot button.

## Step 7



- Remove the 3.1 mm screw next to the USB and DV inputs.

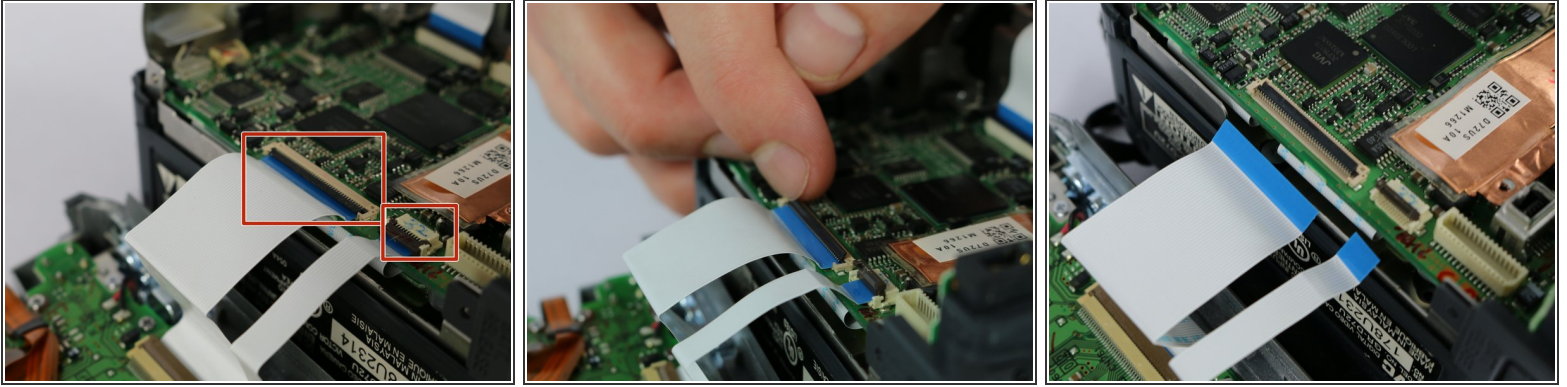
## Step 8



- Gently pull apart both halves of the camera to reveal the inner components.

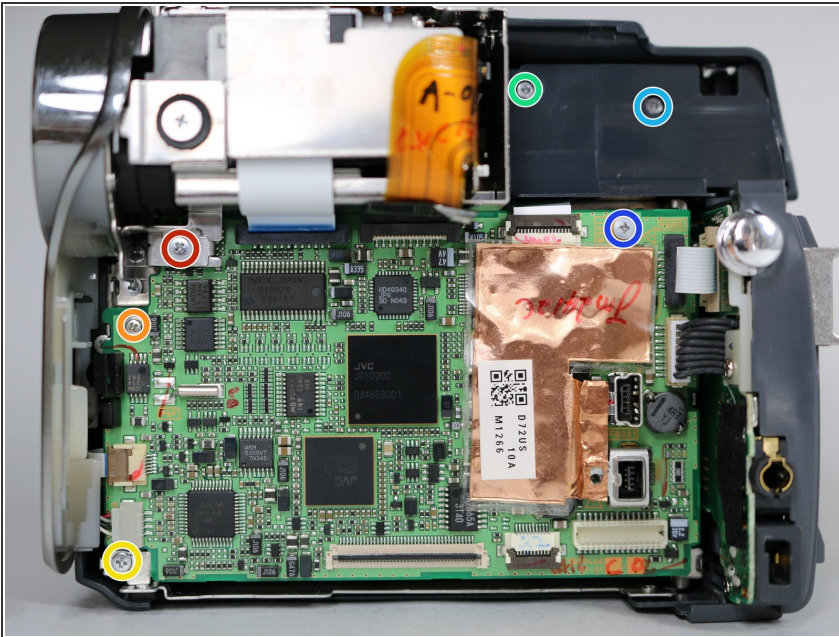


## Step 9



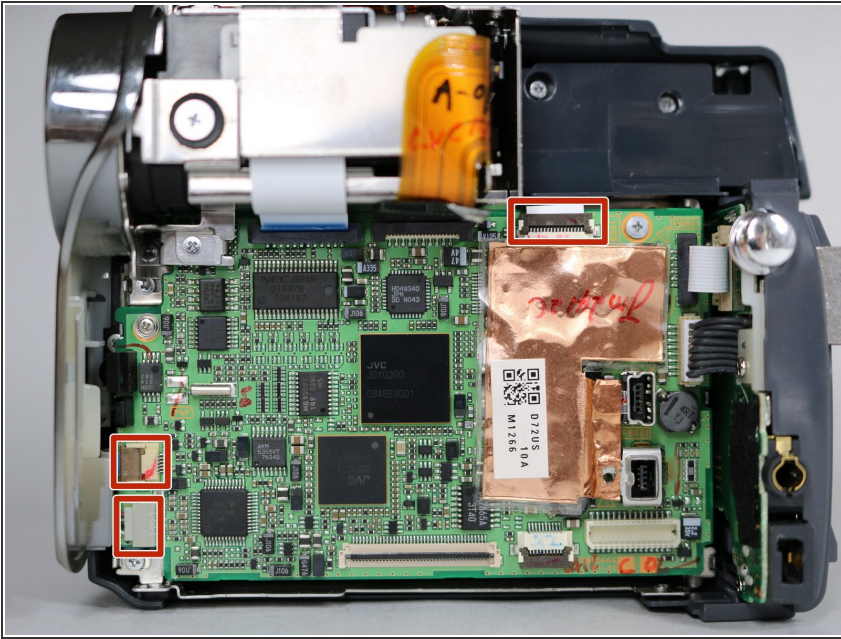
- Flip the cable locks to the up-position and pull both cables connecting the lateral function port panel to the rest of the camera.
- Insert the cables from the new port panel into their inputs and flip the locks to the down position.
- ⓘ It is easier to use tweezers when inserting the cable but not required.

## Step 10 — Cassette Holder



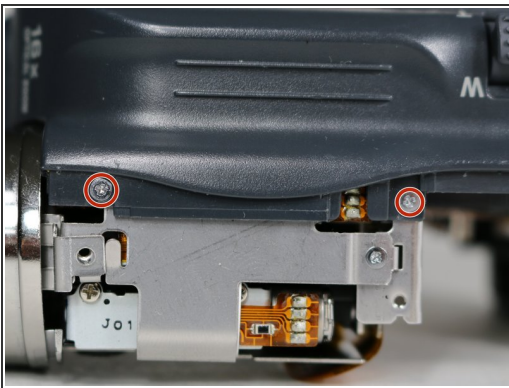
- From the inside of the camera remove these six screws.
- 3.3 mm
- 3.6 mm
- 3.1 mm
- 4.3 mm
- 4.3 mm
- 3.7 mm

## Step 11



- Unplug the three cables from the circuit board.

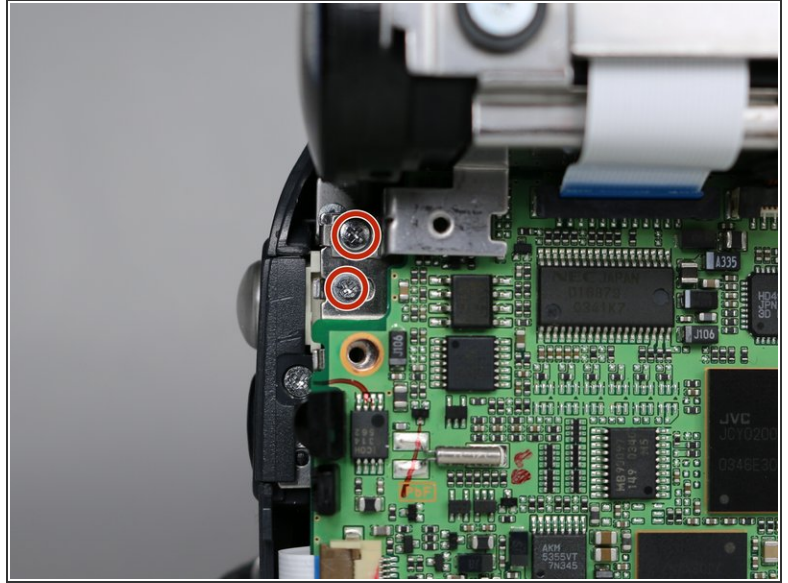
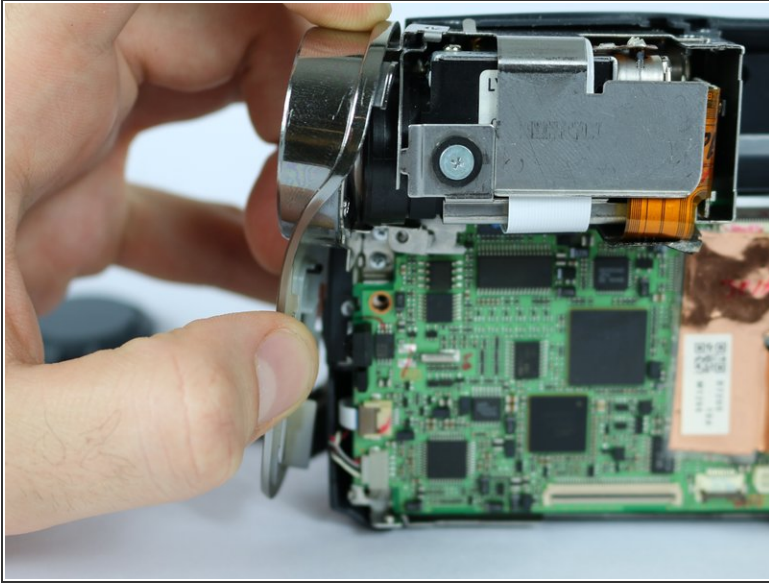
## Step 12



- From the top of the camera remove the two 3.1 mm screws securing the lens to the camera frame.
- From the bottom of the camera remove the 3.2 mm screw next to the battery release switch.
- Remove the 9.1 mm screw next to the menu and volume control label.

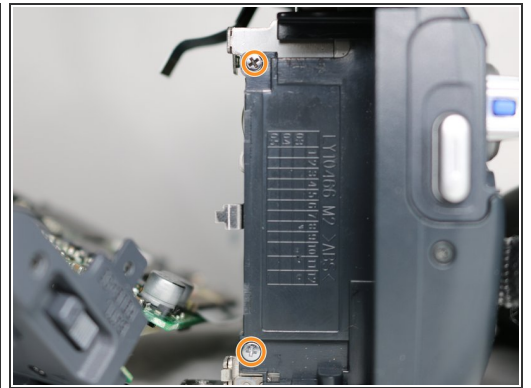
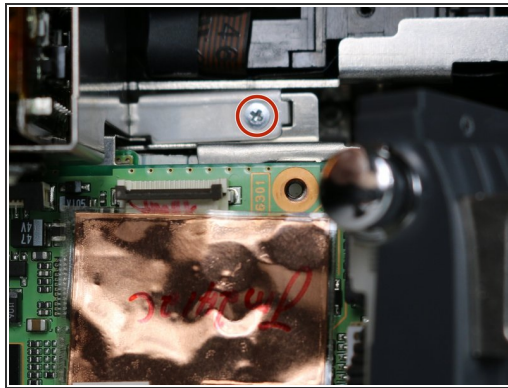
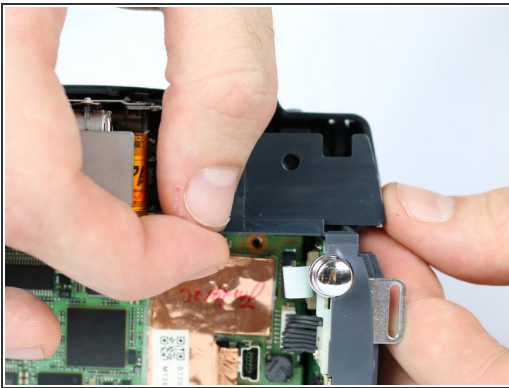


## Step 13



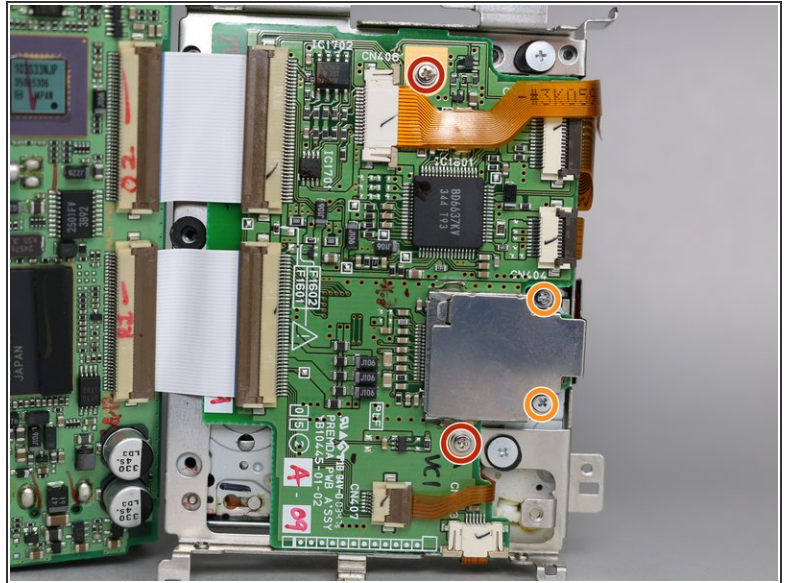
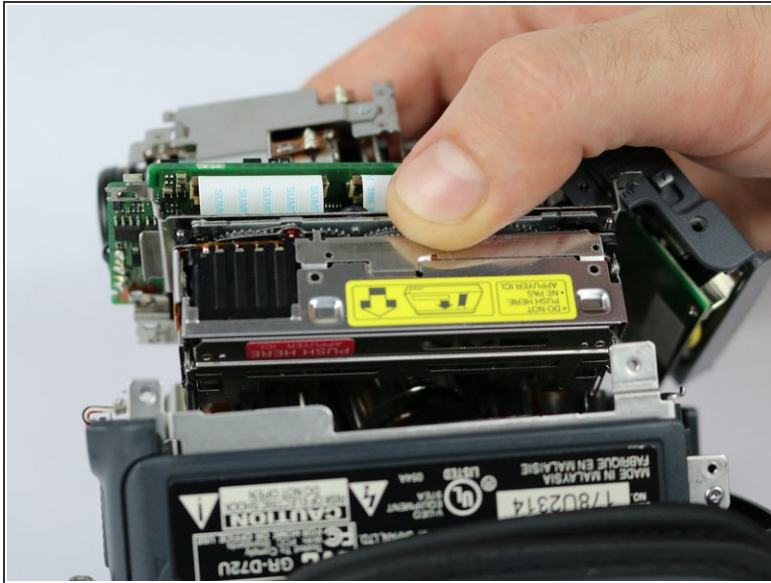
- Remove the lens cap housing.
- Remove the two 3.1 mm screws from the inside of the camera.

## Step 14



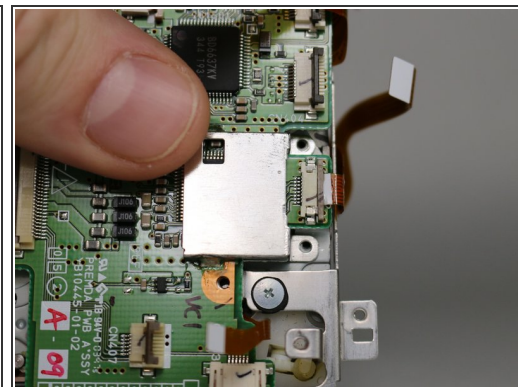
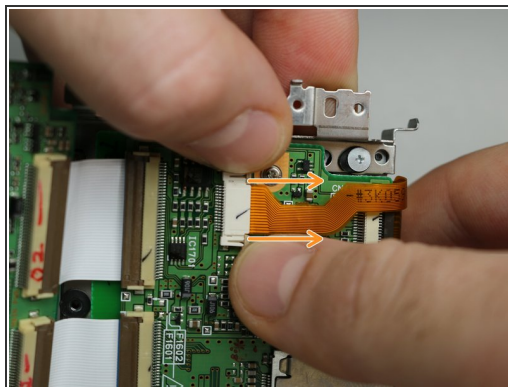
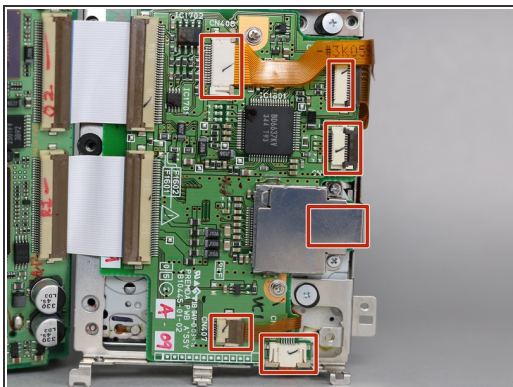
- Remove the plastic cover piece next to the silver light button.
- Remove the 3.1 mm screw securing the lens to the circuit board.
- Remove the two 3.3 mm screws from underneath the battery port.

## Step 15



- Take the cassette holder and circuit board by lifting it out of the camera frame.
  - Remove the two 3.6 mm screws.
  - Remove the two 1.8 mm screws then the plate.
- i** If you are following this guide to replace the LED light or microphone you do not need to follow this step or the next step.

## Step 16



- Remove the six cables (one is underneath the metal plate) connecting the cassette holder to the circuit board.
- To unplug two of the cables you must first pull the lock tabs out (towards the cable) then remove the cable.

To reassemble your device, follow these instructions in reverse order.