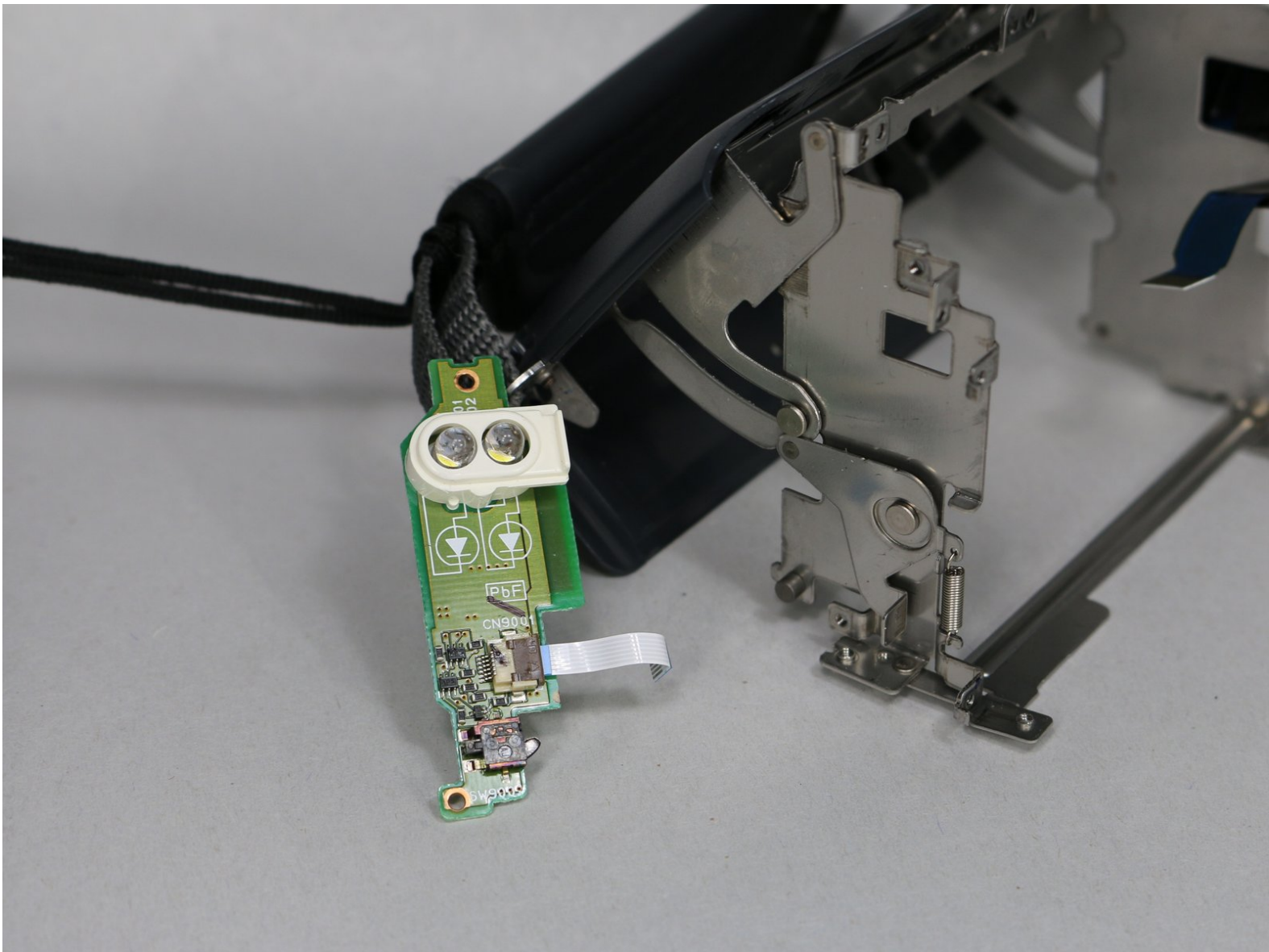




JVC GR-D72U LED Light Replacement

Replacement guide for the LED light which is used to enable better photography in low light conditions.

Written By: Jonah Powers



INTRODUCTION

These LED lights can burn out from use. If dropped sometimes the housing is not enough to protect the bulbs. To remove it you will need a Phillips #000 screwdriver, small plastic opener, and small metal spudger.

This guide requires removing a lot of screws so it is important to keep track of which screw goes where. All screw heads are Phillips size #000.



TOOLS:

- [Metal Spudger](#) (1)
 - [iFixit Opening Tools](#) (1)
 - [Phillips #000 Screwdriver](#) (1)
-

Step 1 — Battery



- Locate button on bottom of camera.
- Slide button to the right.

Step 2



- Pull the battery towards the bottom of the camcorder while lifting battery

Step 3 — Lateral Function Port Panel



- Remove silver plate that says “Auto Light” on the top of the camera using a metal spudger.
- Remove the 3.1 mm screw.
- Remove the three 5.3 mm screws from the back of the camera.

Step 4



- From the bottom of the camera remove the following four screws:
 - 5.3 mm
 - 3.1 mm
 - 5.1 mm
 - 3.5 mm

Step 5



- Use the small plastic opening tool to remove the blue side cover piece.

Step 6



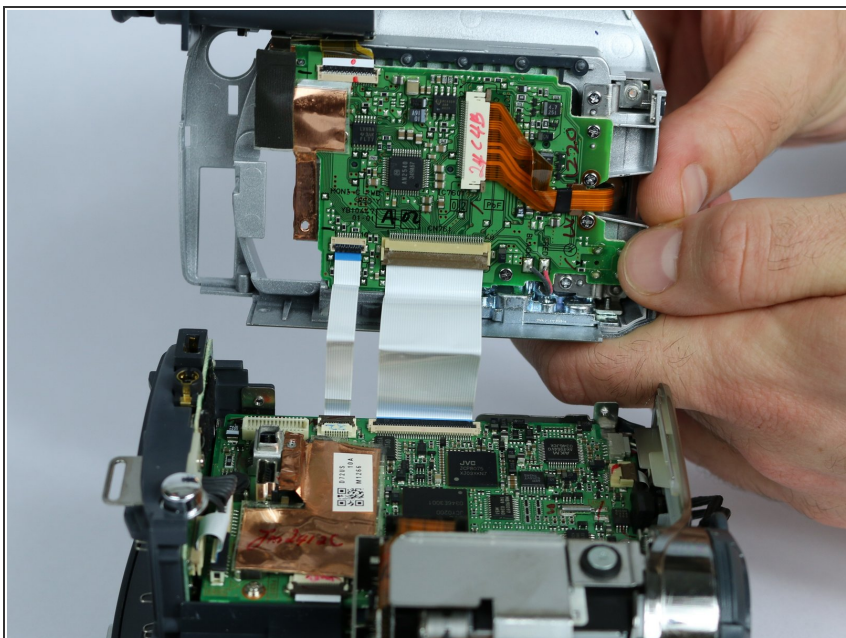
- Remove the 3.1 mm screw on top of the camera, closest to the LCD monitor.
- Remove the 5.4 mm screw next to the snapshot button.

Step 7



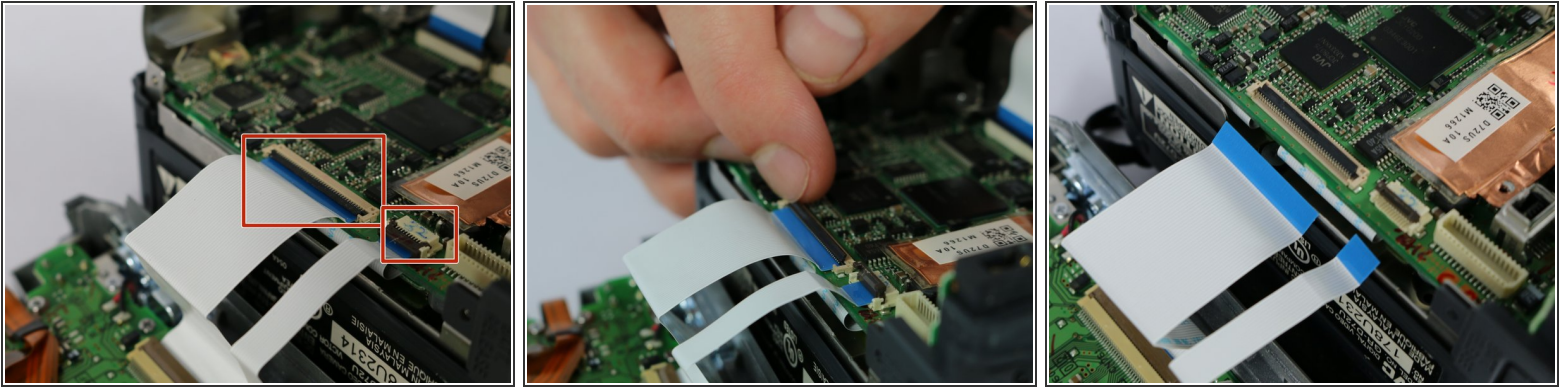
- Remove the 3.1 mm screw next to the USB and DV inputs.

Step 8



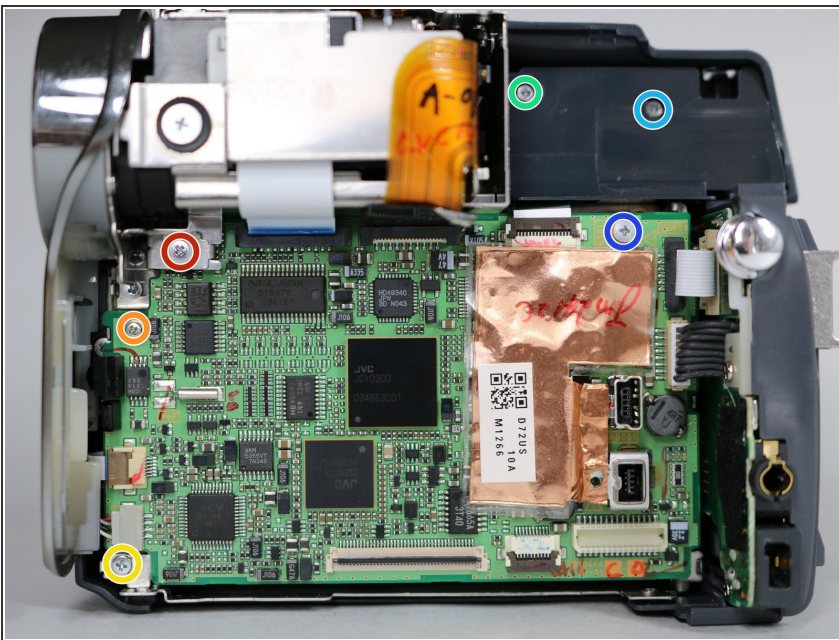
- Gently pull apart both halves of the camera to reveal the inner components.

Step 9



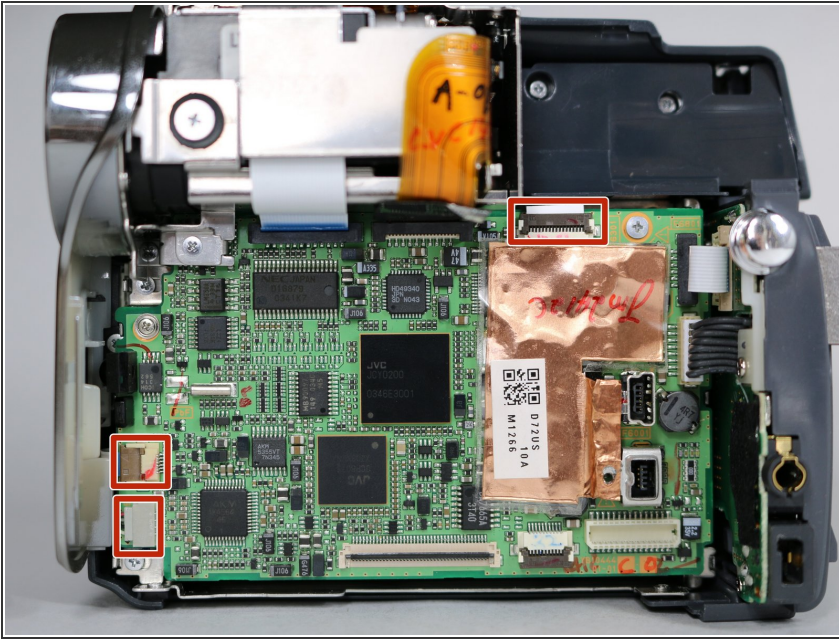
- Flip the cable locks to the up-position and pull both cables connecting the lateral function port panel to the rest of the camera.
- Insert the cables from the new port panel into their inputs and flip the locks to the down position.
- ⓘ It is easier to use tweezers when inserting the cable but not required.

Step 10 — Cassette Holder



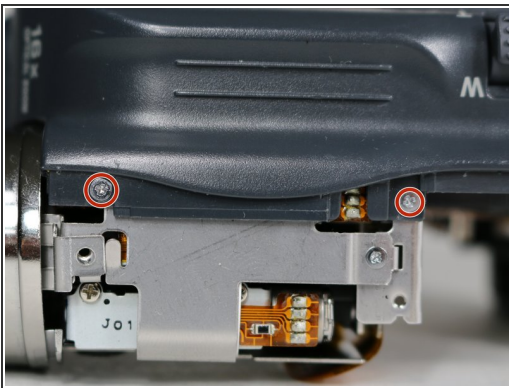
- From the inside of the camera remove these six screws.
- 3.3 mm
- 3.6 mm
- 3.1 mm
- 4.3 mm
- 4.3 mm
- 3.7 mm

Step 11



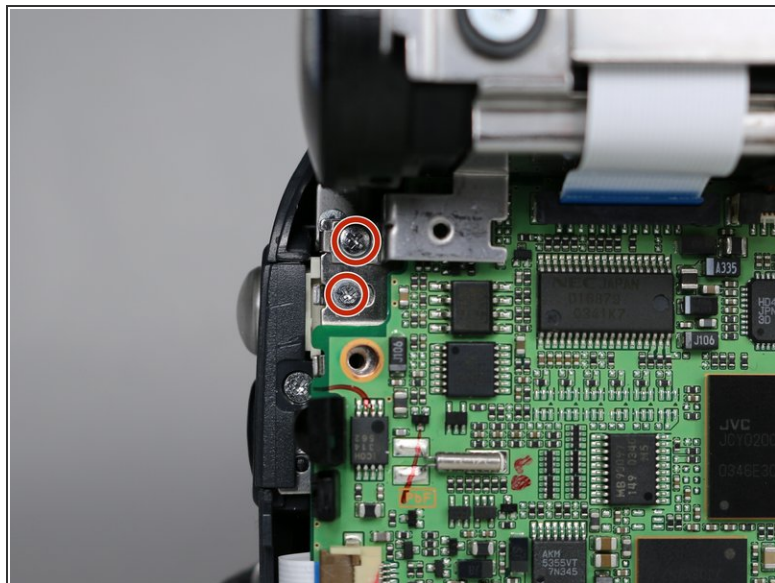
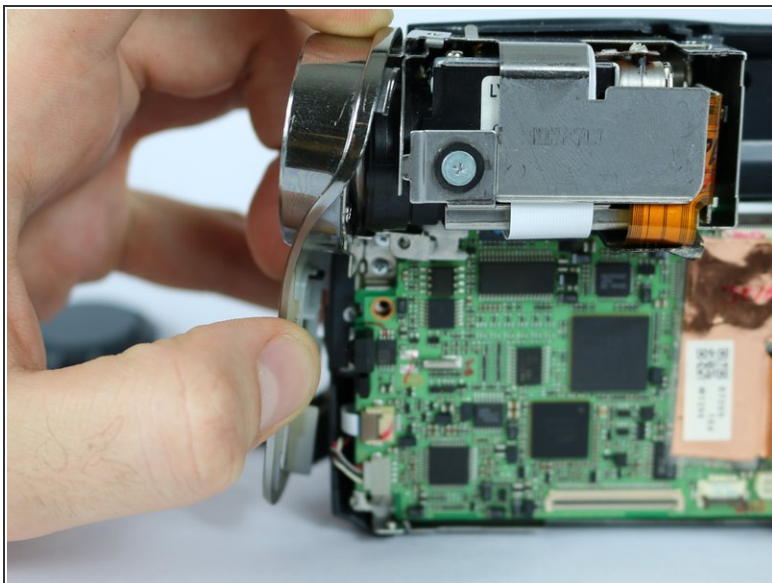
- Unplug the three cables from the circuit board.

Step 12



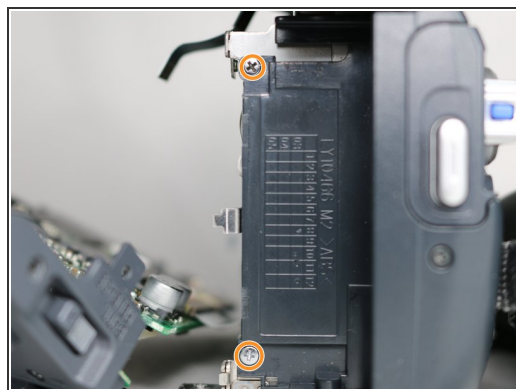
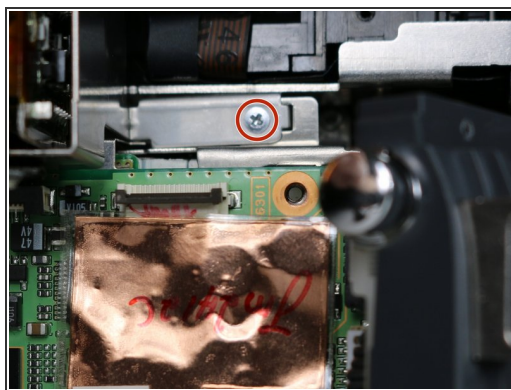
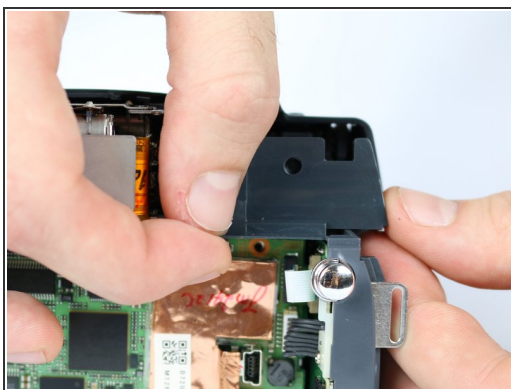
- From the top of the camera remove the two 3.1 mm screws securing the lens to the camera frame.
- From the bottom of the camera remove the 3.2 mm screw next to the battery release switch.
- Remove the 9.1 mm screw next to the menu and volume control label.

Step 13



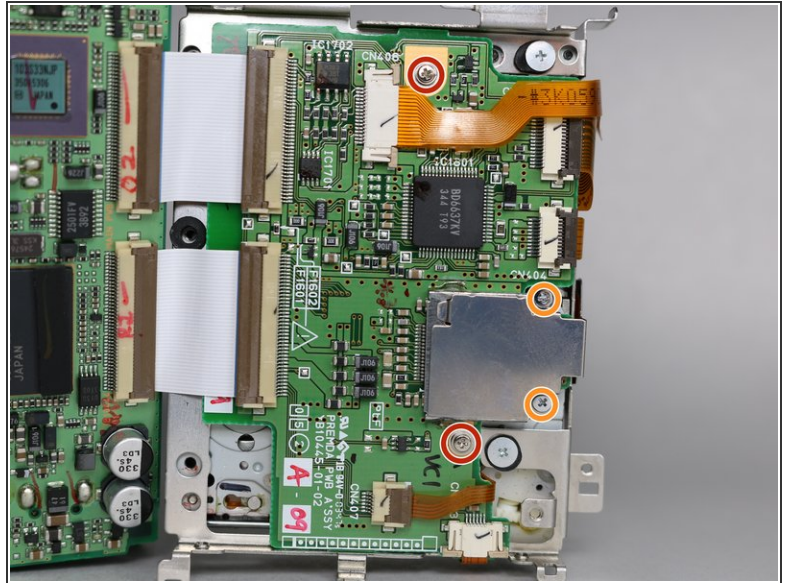
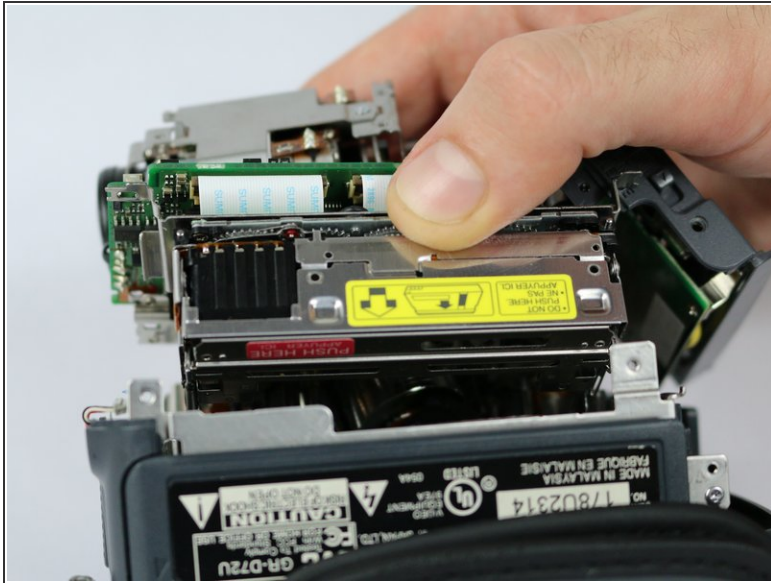
- Remove the lens cap housing.
- Remove the two 3.1 mm screws from the inside of the camera.

Step 14



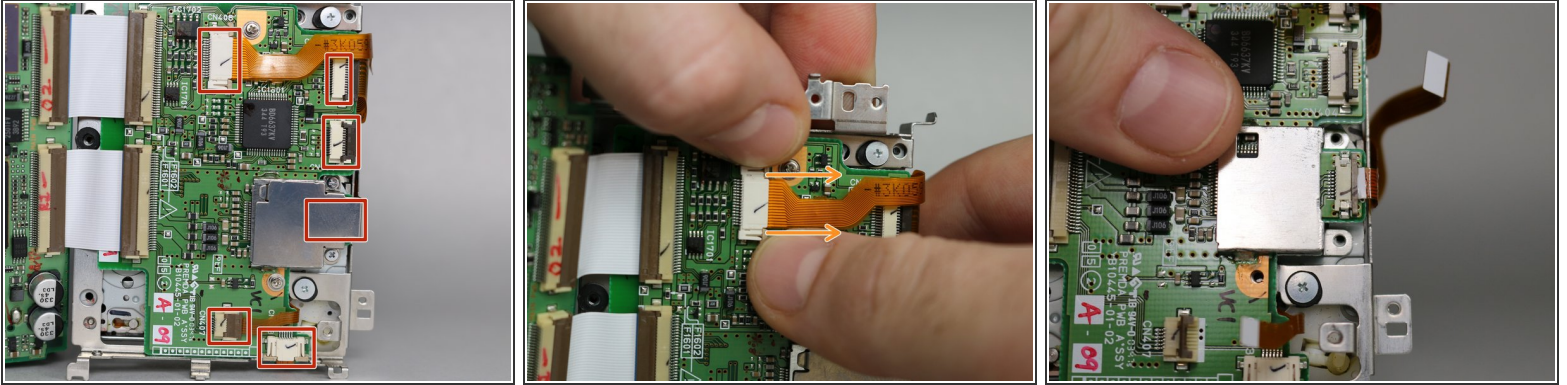
- Remove the plastic cover piece next to the silver light button.
- Remove the 3.1 mm screw securing the lens to the circuit board.
- Remove the two 3.3 mm screws from underneath the battery port.

Step 15



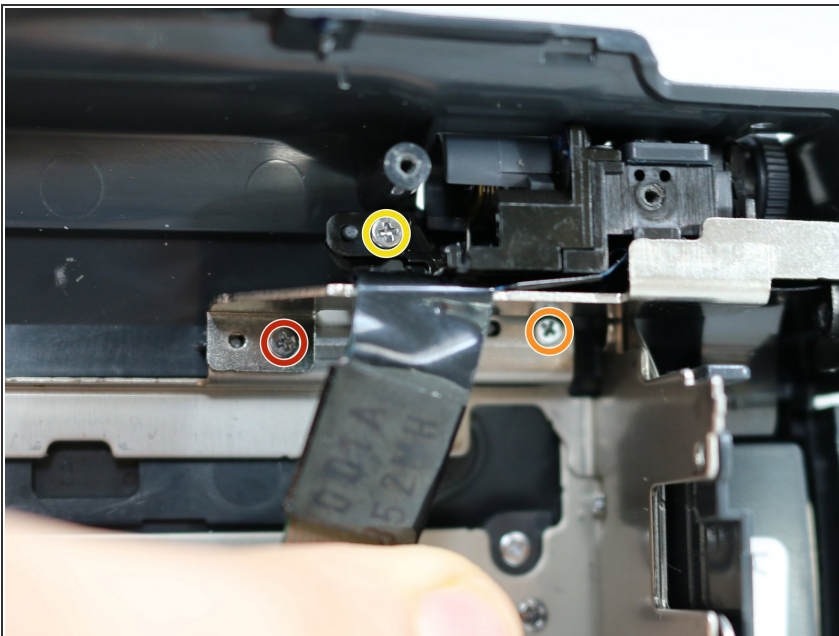
- Take the cassette holder and circuit board by lifting it out of the camera frame.
 - Remove the two 3.6 mm screws.
 - Remove the two 1.8 mm screws then the plate.
- i** If you are following this guide to replace the LED light or microphone you do not need to follow this step or the next step.

Step 16



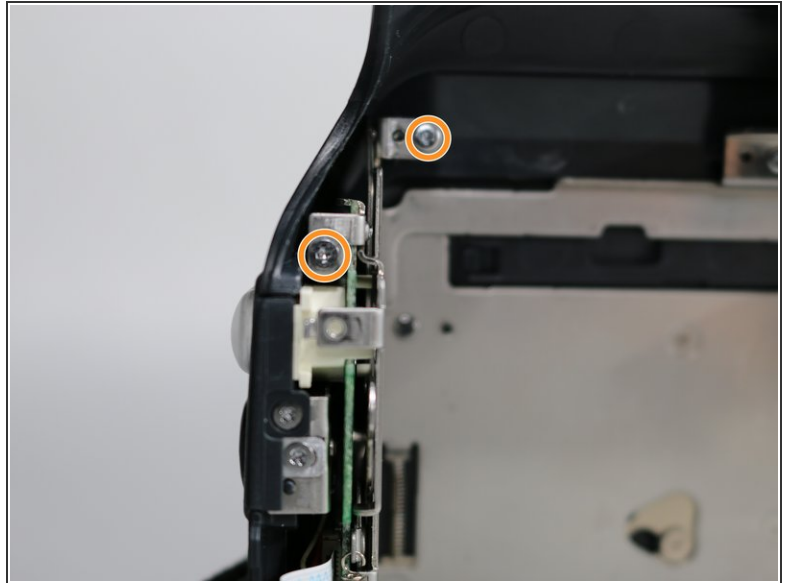
- Remove the six cables (one is underneath the metal plate) connecting the cassette holder to the circuit board.
- To unplug two of the cables you must first pull the lock tabs out (towards the cable) then remove the cable.

Step 17 — LED Light



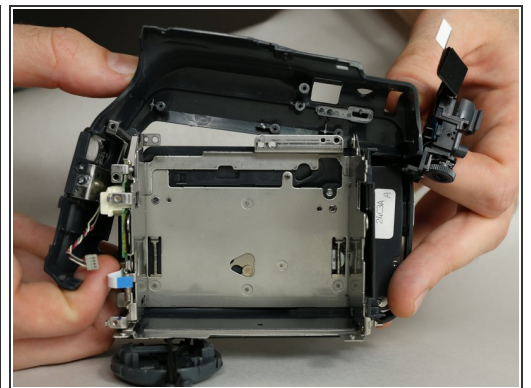
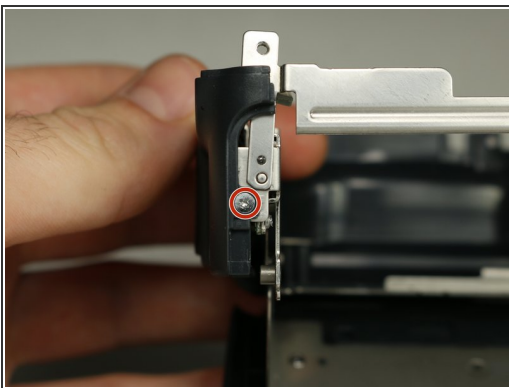
- Remove the three screws securing the microphone housing and camera operation buttons to the frame with the following sizes:
 - 4.3 mm
 - 3.1 mm
 - 4.2 mm

Step 18



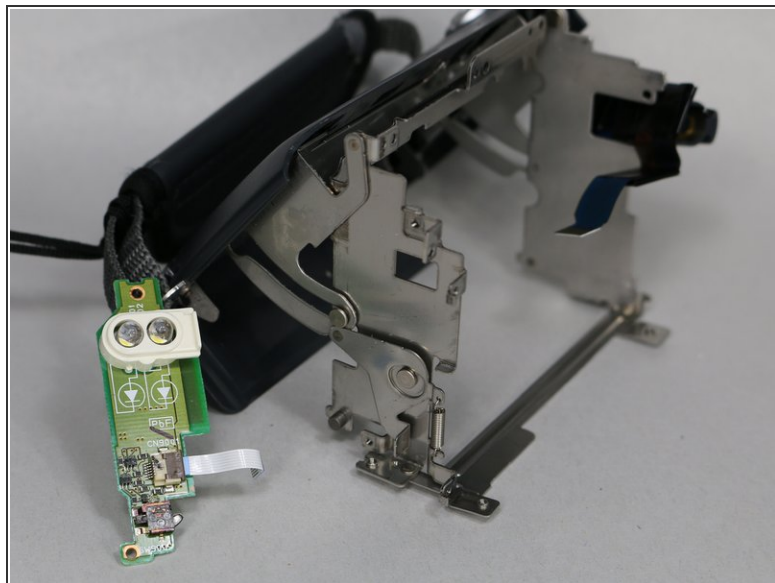
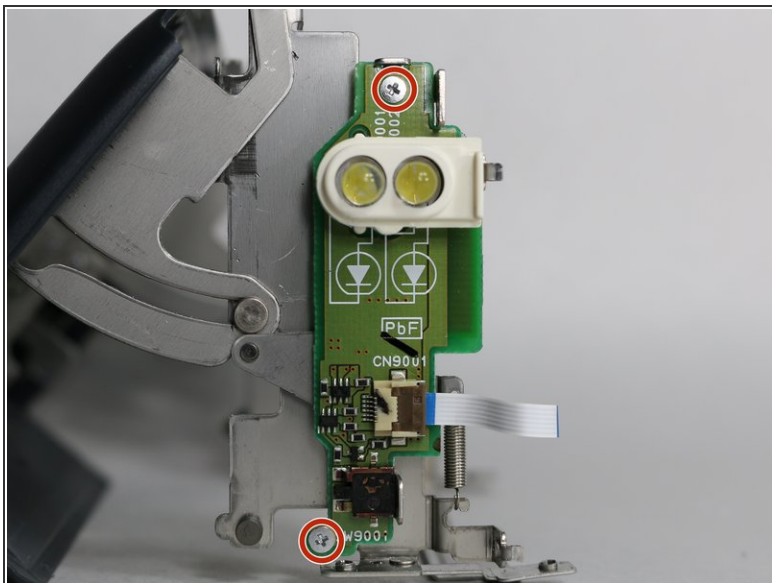
- Remove the 4.3 mm screw on the bottom of the camera frame.
- Remove the two 4.3 mm screws above the LED securing the microphone housing to the frame.

Step 19



- Open the cassette holder to reveal a 2.4 mm screw on the bottom of the camera and remove it.
- Make sure the camera operation buttons are positioned completely outside of the camera frame.
- Gently lift the microphone housing from the front-bottom side of the camera and remove it from the frame.

Step 20



- Remove the two 2.3 mm screws holding down the LED chip and remove the chip.

i Ignore this step if you are following this guide for the microphone.

To reassemble your device, follow these instructions in reverse order.