



# Samsung Galaxy Note Pro 12.2 SD Port Replacement

If your device is unable to read your SD card,...

Written By: Tina Kong



# INTRODUCTION

If your device is unable to read your SD card, you may need to replace your port. This guide will show you how to safely replace your SD port.

## TOOLS:

[Tweezers](#) (1)



[iFixit Opening Tool](#) (1)

[Magnetic Project Mat](#) (1)

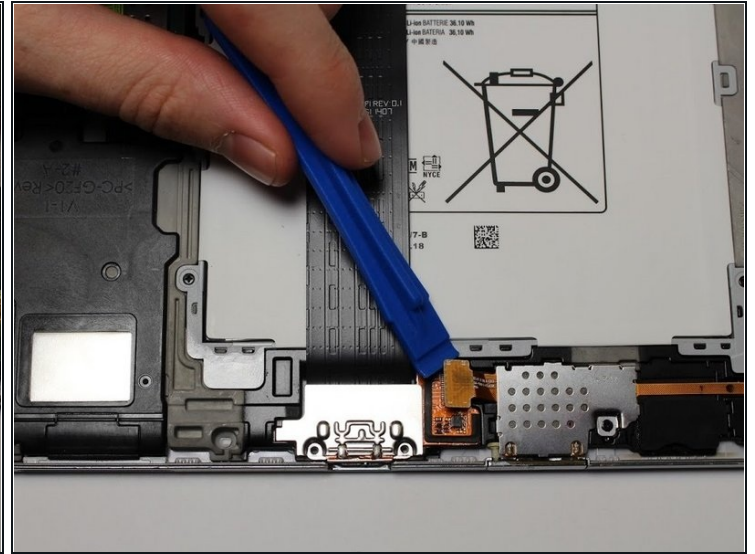
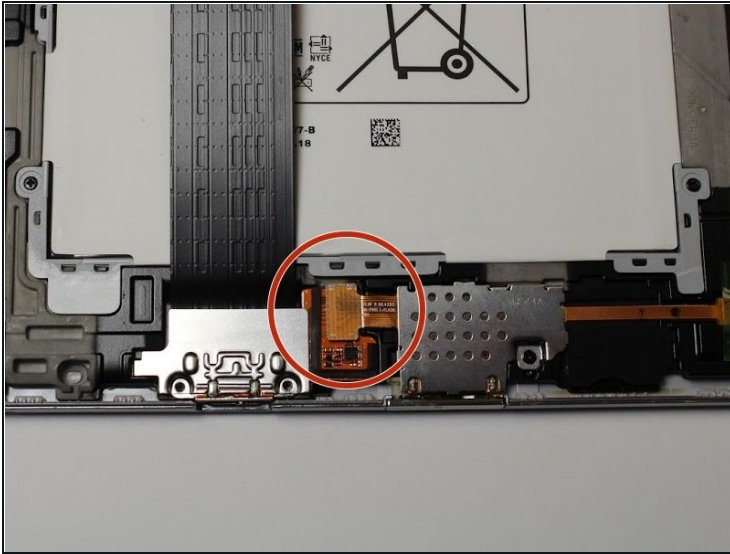
[Phillips #00 Screwdriver](#) (1)

## Step 1 — SD Port



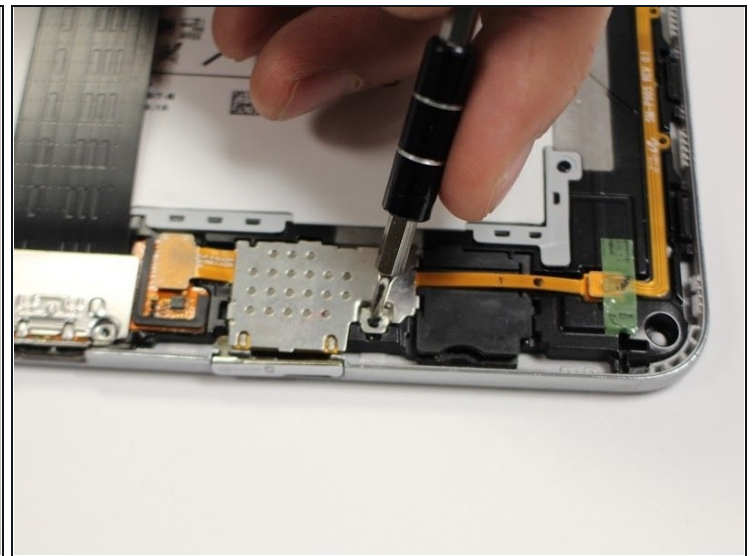
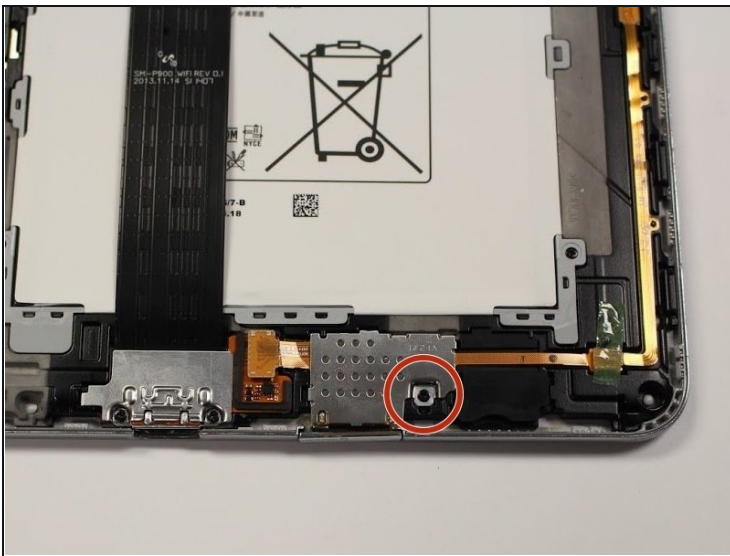
-  Turn off your device before starting your repair.
- Carefully remove the back cover with the plastic opening tool.
-  It is best to start with one corner and work your way around the device slowly.

## Step 2



- Pop up the orange tab connected to the SD port with the plastic opening tool.

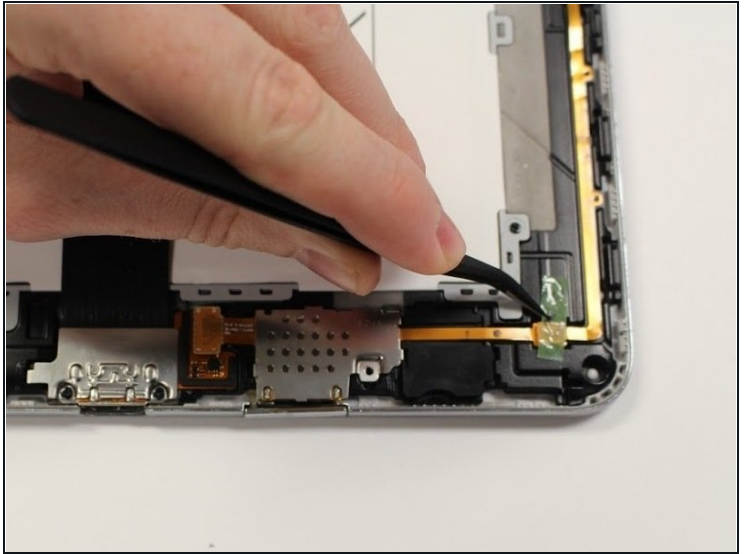
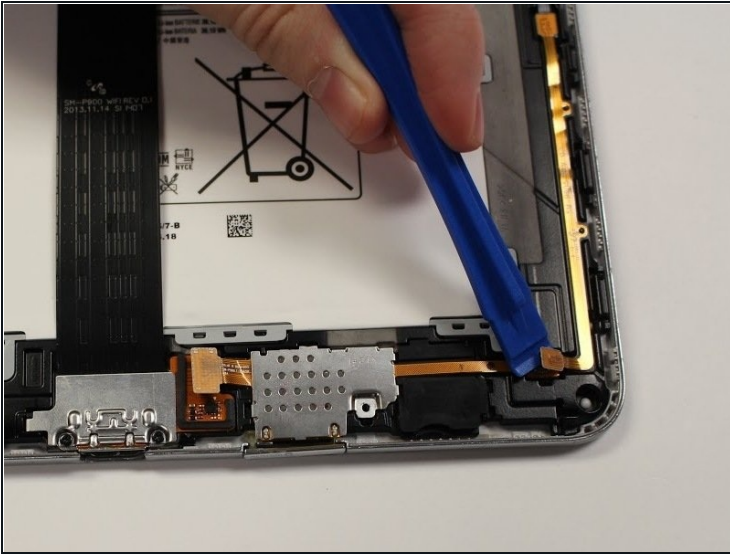
## Step 3



- Remove the one 3mm Phillips #00 screw connected to the SD port.

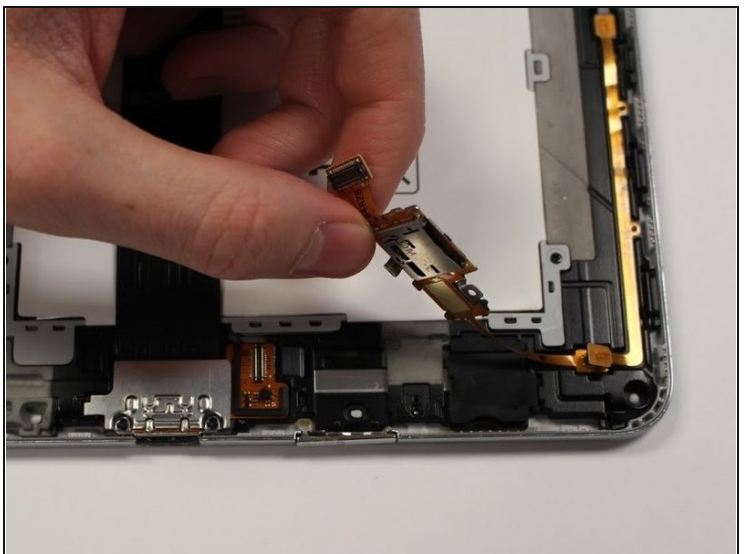
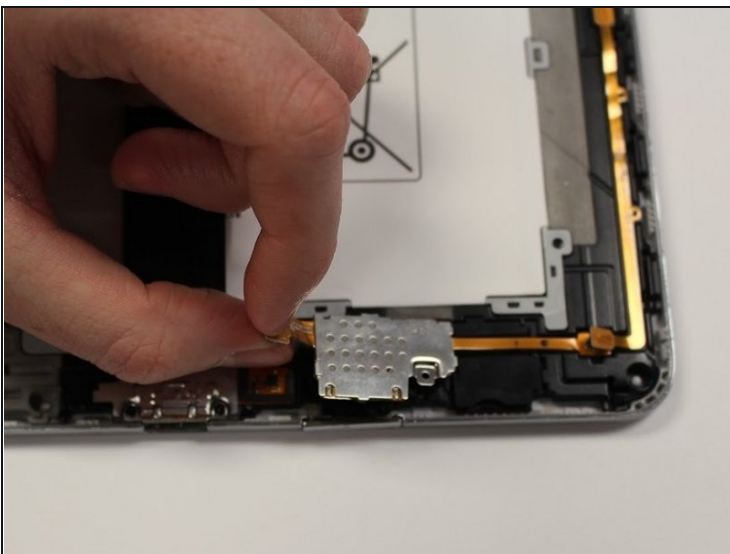


## Step 4



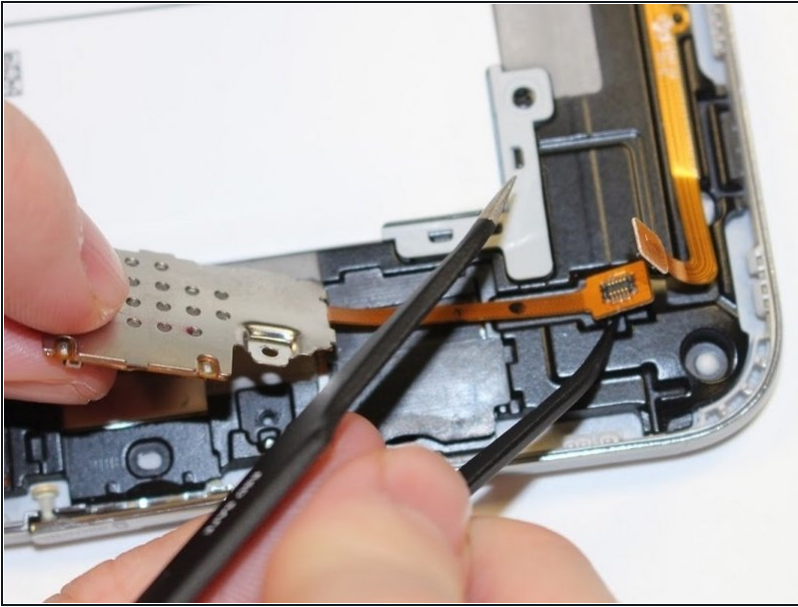
- Pop open the orange wire tab connected to the SD port with the plastic opening tool.
- ① If there is tape covering your tab, remove it with the [tweezers](#) before you pop open the tab.

## Step 5



- Using the orange tab, pull the SD port up and away from the device.

## Step 6



- Using the plastic end of the tweezers pop up the orange tab connecting the SD port to the device.
- ⓘ There is a little indent below the orange tab to help get under this piece. It may be difficult to remove, push up hard.

---

To reassemble your device, follow these instructions in reverse order.