



MSI GE72 6QF Apache Pro Optical Drive Replacement

This guide demonstrates how to replace the Optical drive for the MSI GE72 6QF Apache Pro.

Written By: Riley Smith



INTRODUCTION

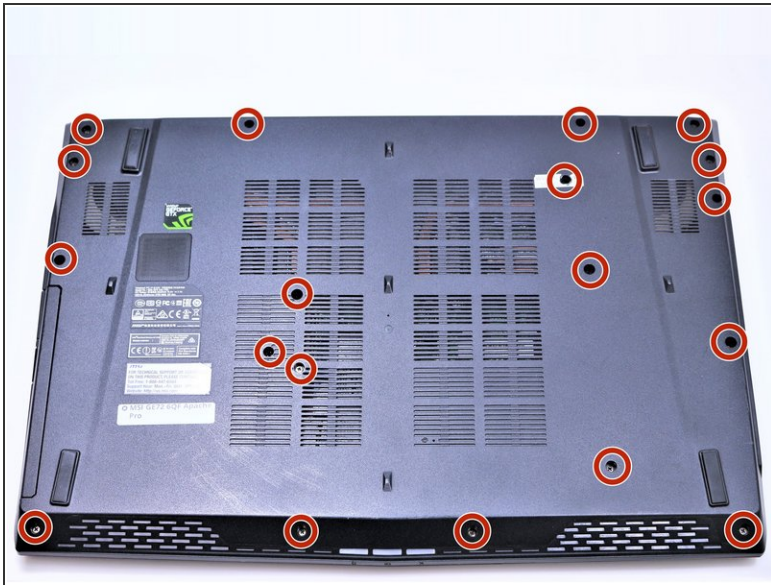
The Optical Drive replacement is easy, just a note though, our Optical Drive did not come with the bezel attached. When the drive has the bezel attached the back panel does not have to come off. Instead a single screw on the back panel would be removed and the drive would slide out.



TOOLS:

- [Phillips #1 Screwdriver](#) (1)
-

Step 1 — Battery



⚠ Make sure the laptop is off and unplugged (not charging).

- With the laptop closed and upside down, unscrew the nineteen 5.5mm Phillips #1 screws that keep the back cover in place.

Step 2



- Slide the optical drive out of the laptop.

Step 3



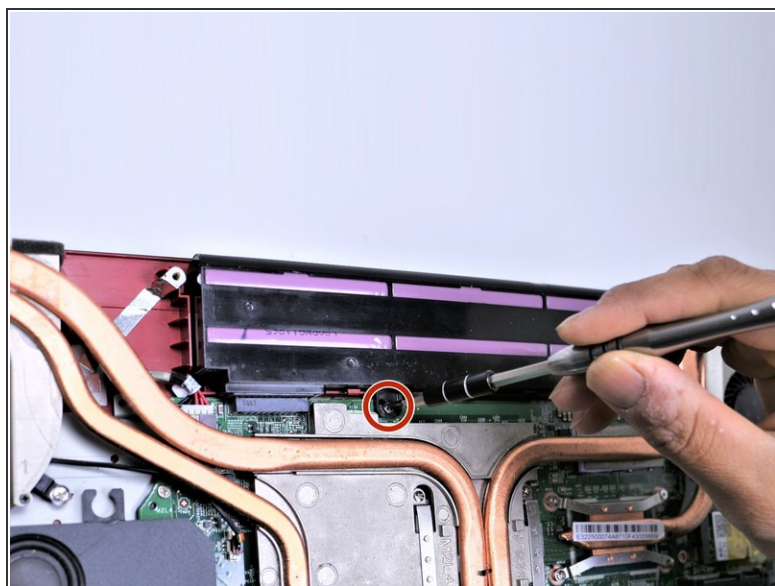
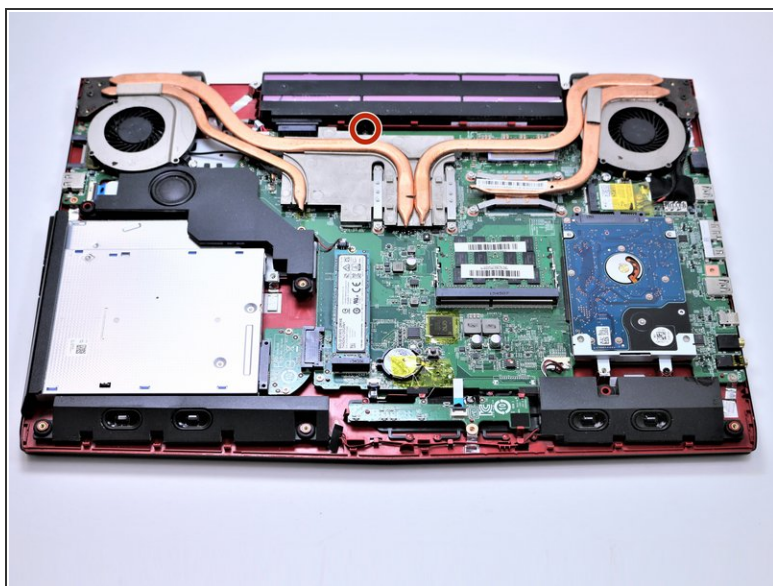
- Use a Phillips screwdriver to remove the three screws along the edge of the optical drive bay.

Step 4



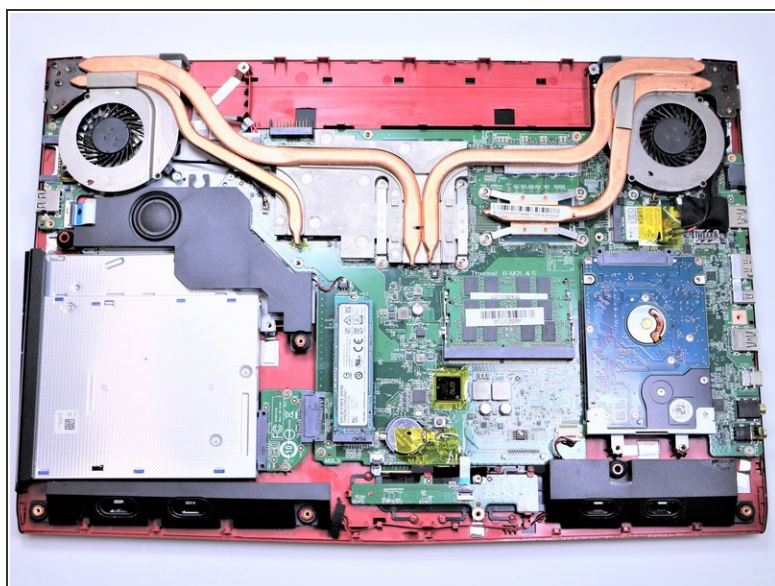
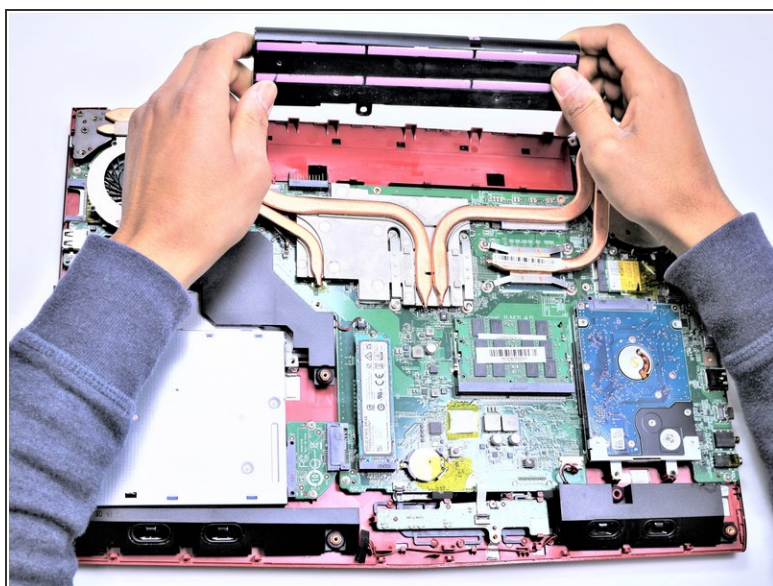
- Using your fingers, gently loosen the edges of all four sides of the back cover.
- Gently pull off the back cover.

Step 5



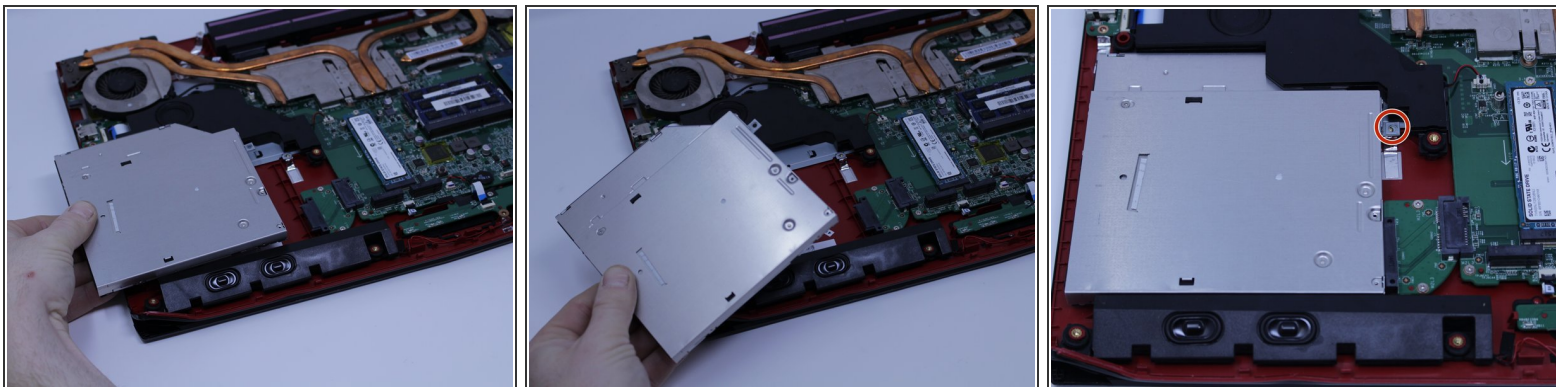
- Unscrew the single 5.5mm Phillips #1 screw keeping the battery secure.

Step 6



- Grab the battery with your fingers and gently pull it up and away from the rest of the laptop.

Step 7 — Optical Drive



- Carefully slide the Optical Drive off of the SATA connector.
- The red marker shows the location for where the retaining screw comes through the back panel to hold the Optical Drive.

To reassemble your device, follow these instructions in reverse order.