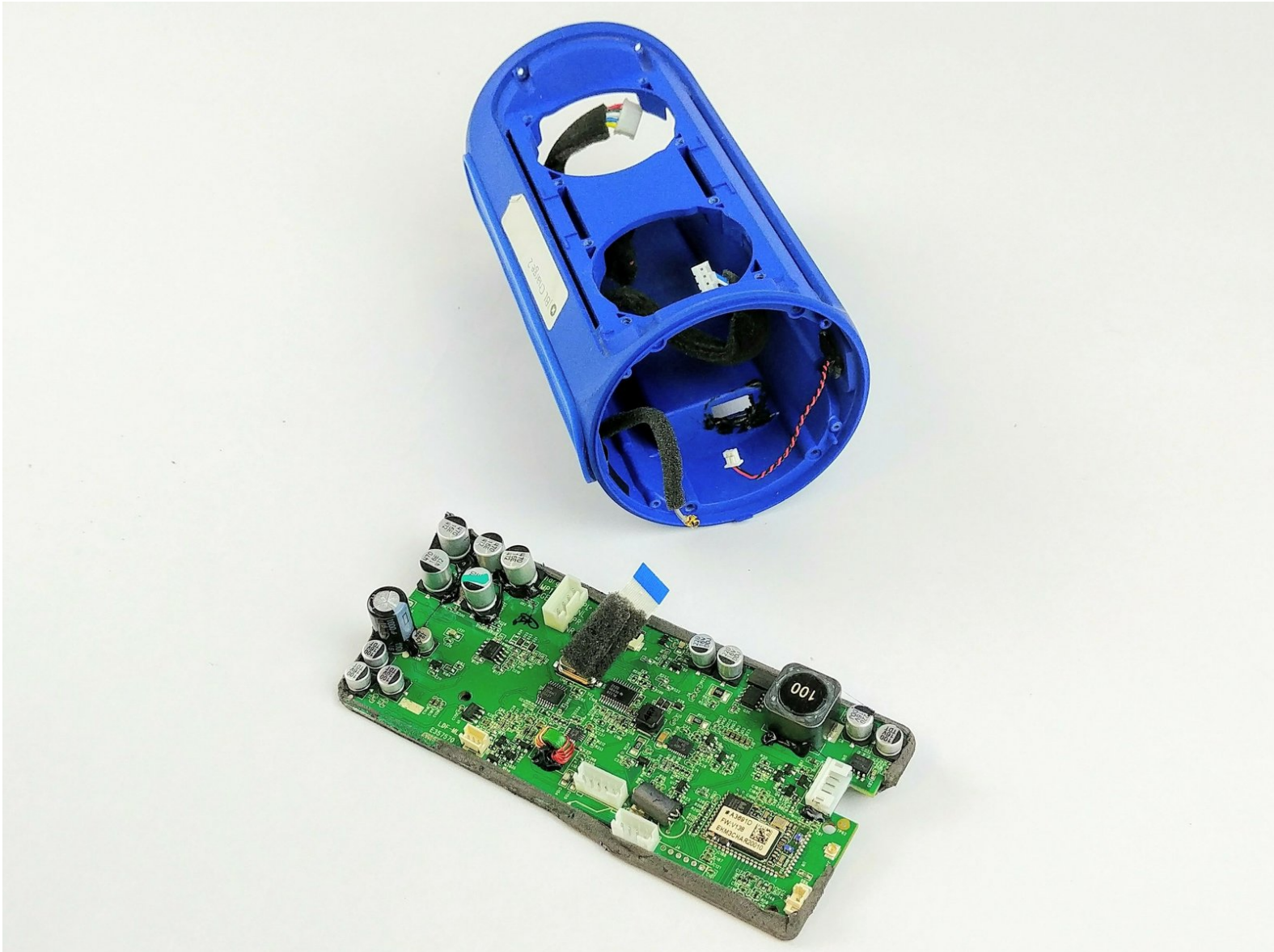




# JBL Charge 2 Motherboard Replacement

Written By: Mauzor Ilonzo



# INTRODUCTION

How to disassemble the JBL Charge 2 for a motherboard replacement.



## TOOLS:

- [Phillips #1 Screwdriver](#) (1)
  - [Metal Spudger](#) (1)
  - [iFixit Opening Tools](#) (1)
-

## Step 1 — Battery



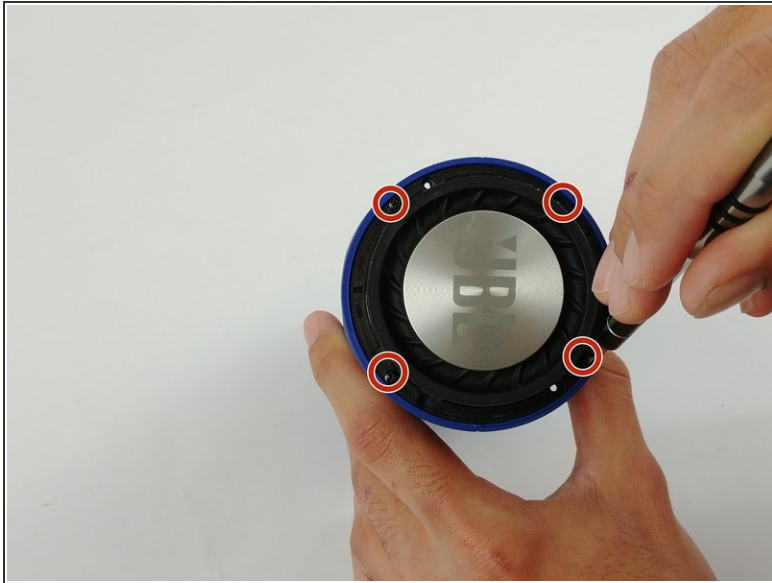
- Remove the screen cover from the speaker using a metal spudger.

## Step 2



- Using a Phillips #1 screwdriver (PH1), remove the (4) four 8mm screws.
- Remove the end cap of the device. Repeat the same process to remove the other end cap.

### Step 3



- To remove the end diaphragms, use a Phillips #1 screwdriver (PH1) and remove the (4) four 6mm screws.
- Twist off the end cap and remove them from the device.



## Step 4



- Use a Phillips #1 screwdriver (PH1) to remove the (2) two screws from the battery cover.
- Pry away the plastic battery cover with a plastic spudger.

## Step 5



- Disconnect the battery connector with a plastic opening tool and wiggle the connector free.

## Step 6



- Scrape the battery wire sealant off with a plastic opening tool, and ensure it is free of the body of the speaker and wires.
- Slide the battery free.

## Step 7 — Speakers



- Remove the opposite screen cover using a metal spudger

## Step 8



- Use the Phillips #1 screwdriver (PH1) to remove the (8) eight screws.
- Pull out the speakers from the device.

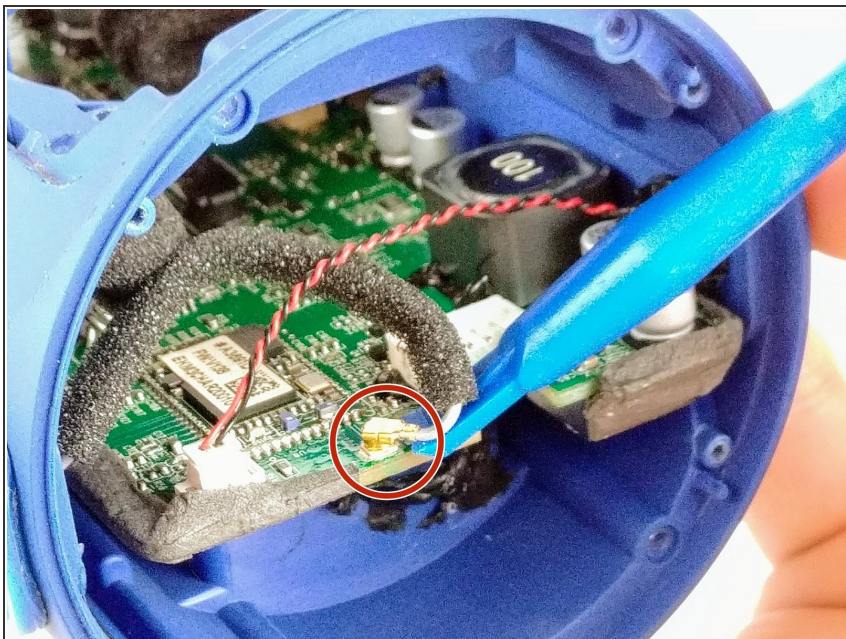
## Step 9



- Disconnect the wiring from the speaker by using the fine tip pry tool.
- Remove the speakers from the device.



## Step 10 — Motherboard



- Use a spudger to disconnect the gold antenna connector from the main circuit board.

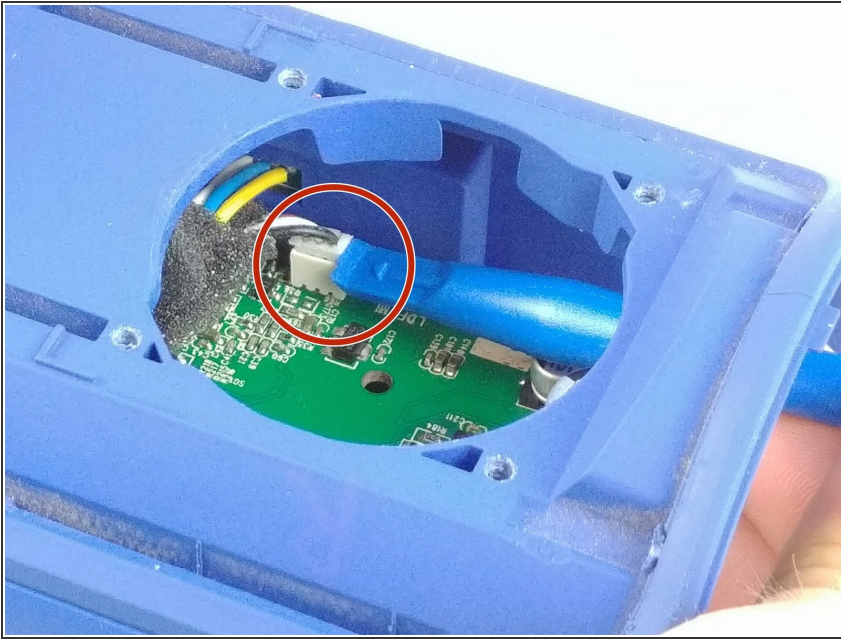
## Step 11



- Disconnect the microphone connector using the plastic opening tool.

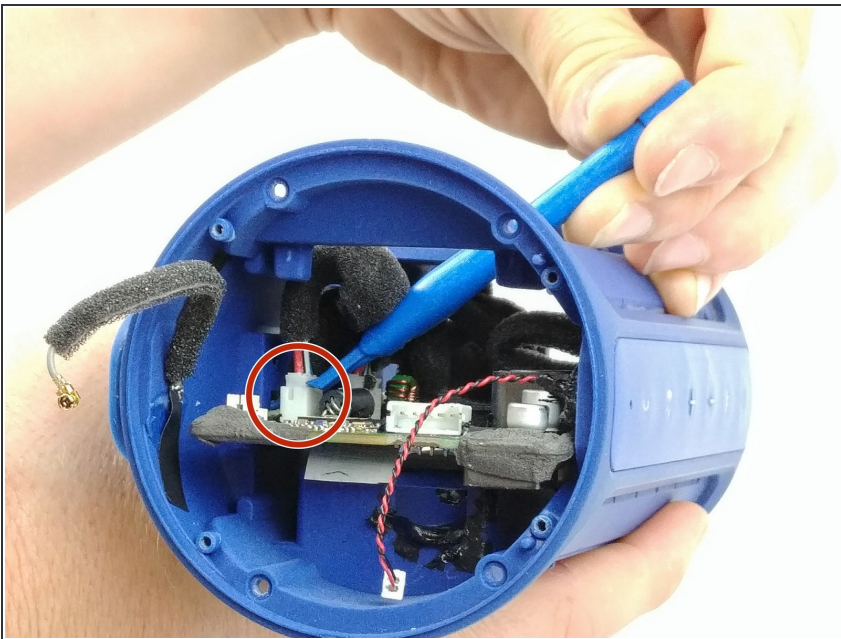


## Step 12



- Use a plastic opening tool to disconnect the 3.5 mm headphone connector.

## Step 13



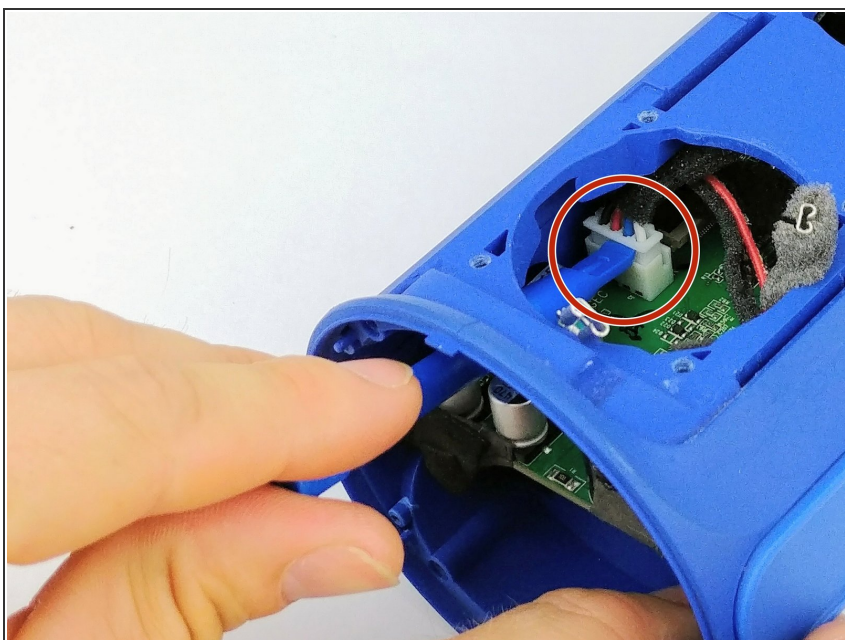
- Disconnect micro-b connector with a plastic opening tool.

## Step 14



- Remove the connector to the USB connector using a plastic opening tool.

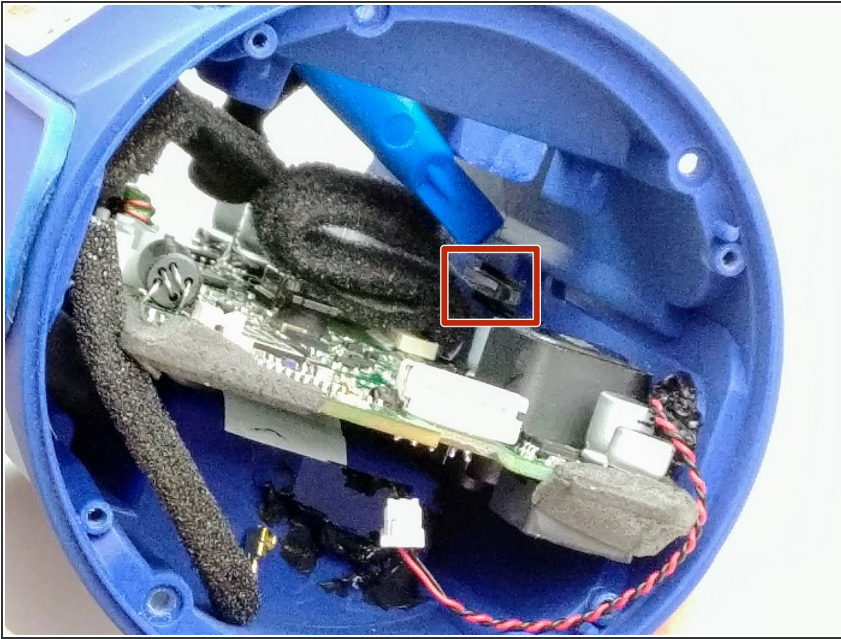
## Step 15



- Remove the speaker wires from the control panel by prying off with a plastic opening tool.

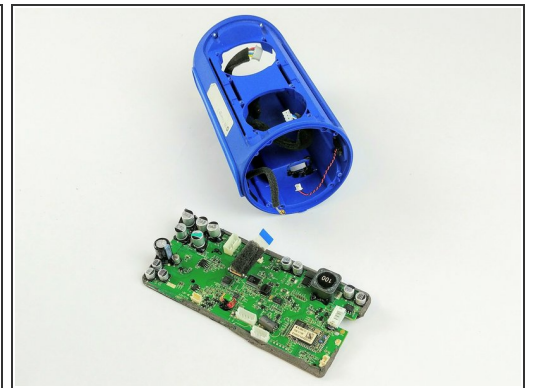
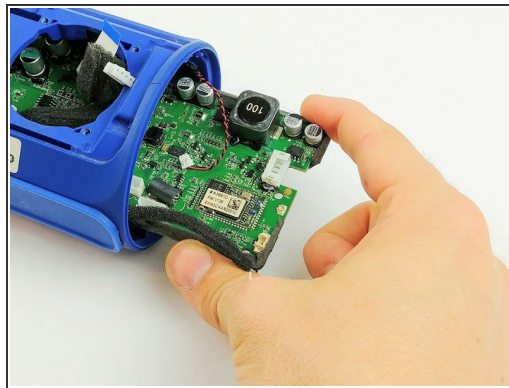
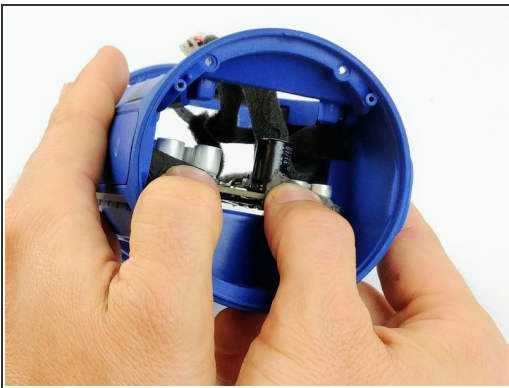


## Step 16



- Next, disconnect the control-panel ribbon by prying out the grey plastic tab using a plastic opening tool. The ribbon should freely come out afterwards.

## Step 17



**⚠ Caution:** Touching the capacitors will short out the circuit board. Push on the end of the circuit board and carefully keep thumbs on foam insulation on ends of board.

- Remove the motherboard from the device.

To reassemble your device, follow these instructions in reverse order.