



Written By: Matthew Clements



INTRODUCTION

If your computer has to remain on the charger to be used or is not holding a battery charge like it used to, this guide will help you replace your battery.



TOOLS:

- [Phillips #0 Screwdriver](#) (1)
- [Metal Spudger](#) (1)



PARTS:

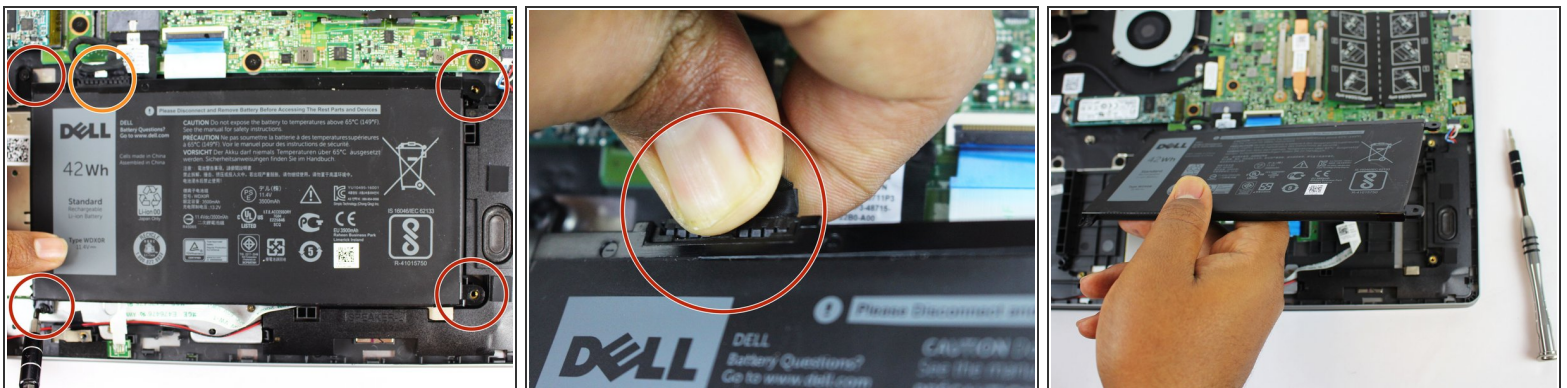
- [Dell WDX0R Replacement Battery](#) (1)

Step 1 — Back Cover



- Remove the (10) P58F black screws on the back cover using the Phillips #0 screwdriver.
- After removing the screws, remove the back cover using a plastic or metal spudger.

Step 2 — Battery



- Unscrew the (4) four screws surrounding the battery with a Phillips #0 screwdriver.
- Unplug the cord connected to the battery and remove the battery.

To reassemble your device, follow these instructions in reverse order.