



# iRobot Roomba 630 Top Bumper Infrared Sensor Replacement

This guide will demonstrate in detail how to...

Written By: Jeffrey Rook



## INTRODUCTION

This guide will demonstrate in detail how to remove and replace the Top Bumper Infrared Sensor from the iRobot Roomba 630. The front sensor could become damaged or potentially wear out over time and need to be replaced to ensure the Roomba operates correctly. Without the front sensor, the Roomba won't dock itself correctly nor sense incoming objects as it's vacuuming, causing it to crash around your home or office.

There aren't any special skills required for this removal and you may be interested to discover what hidden mechanisms lurk inside your Roomba. There are, however, quite a few detail-oriented steps so, be sure to read each bullet point in its entirety and compare with the pictures before disassembling your Roomba.

---

### TOOLS:

Phillips #2 Screwdriver (1)  
Tweezers (1)

### PARTS:

iRobot 600 series top bumper IR sensor (1)

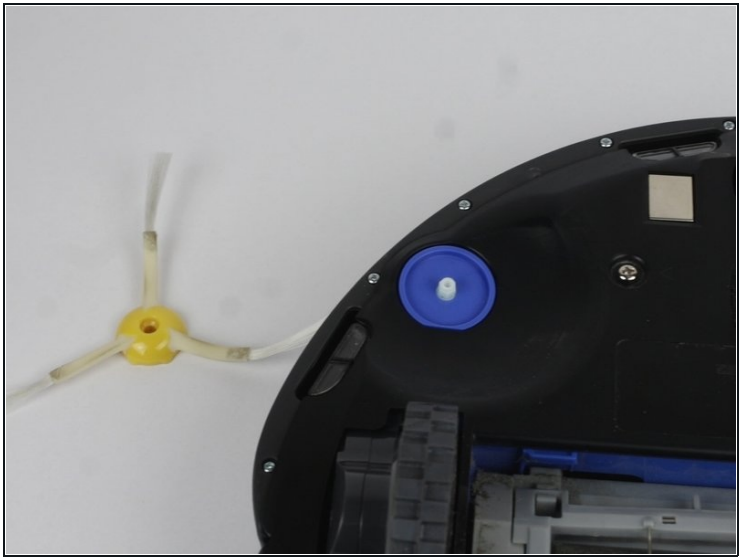
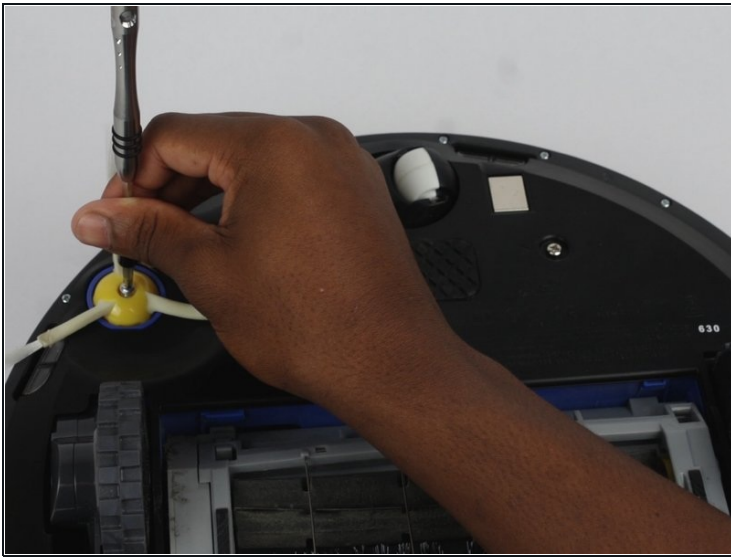
---

## Step 1 — Front Sensor



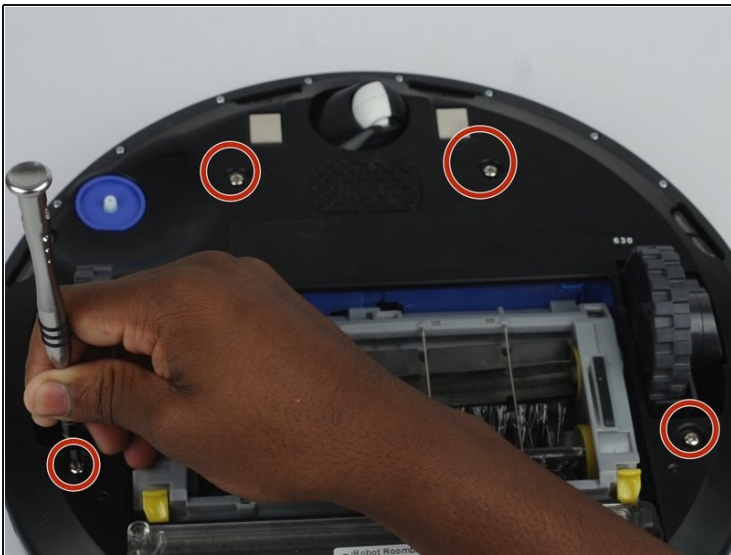
- Press the bin button and pull the bin out.

## Step 2



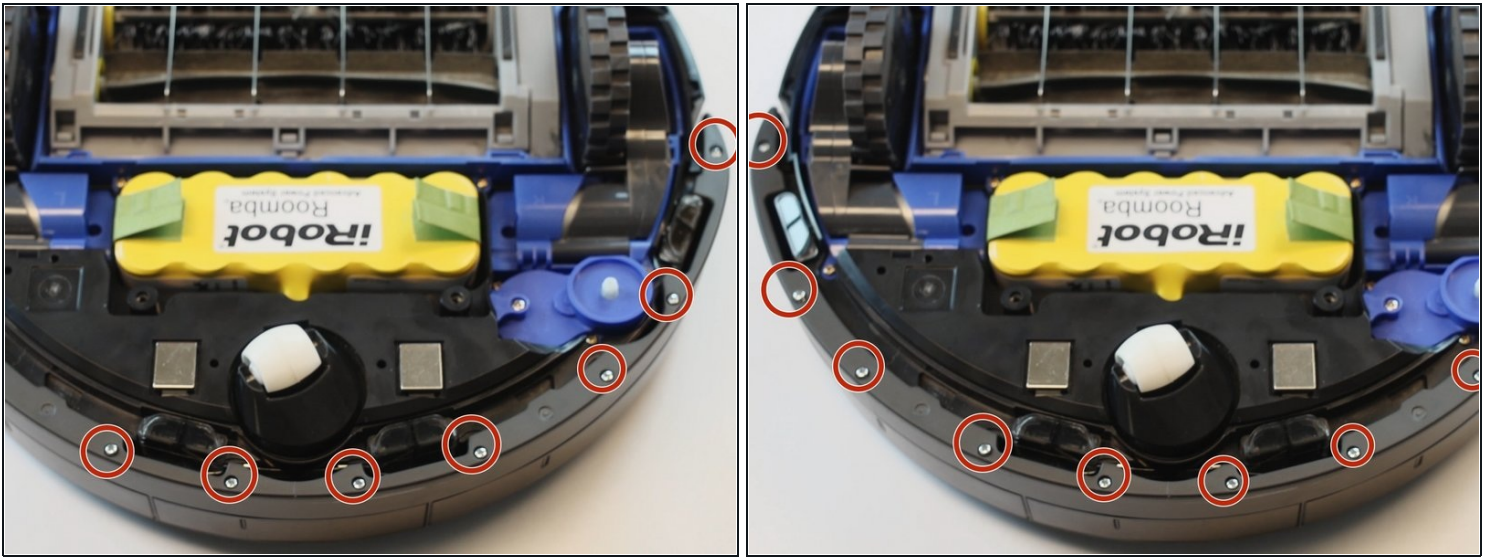
- Flip the device over and unscrew the side brush screw using the Phillips #2 screwdriver.

## Step 3



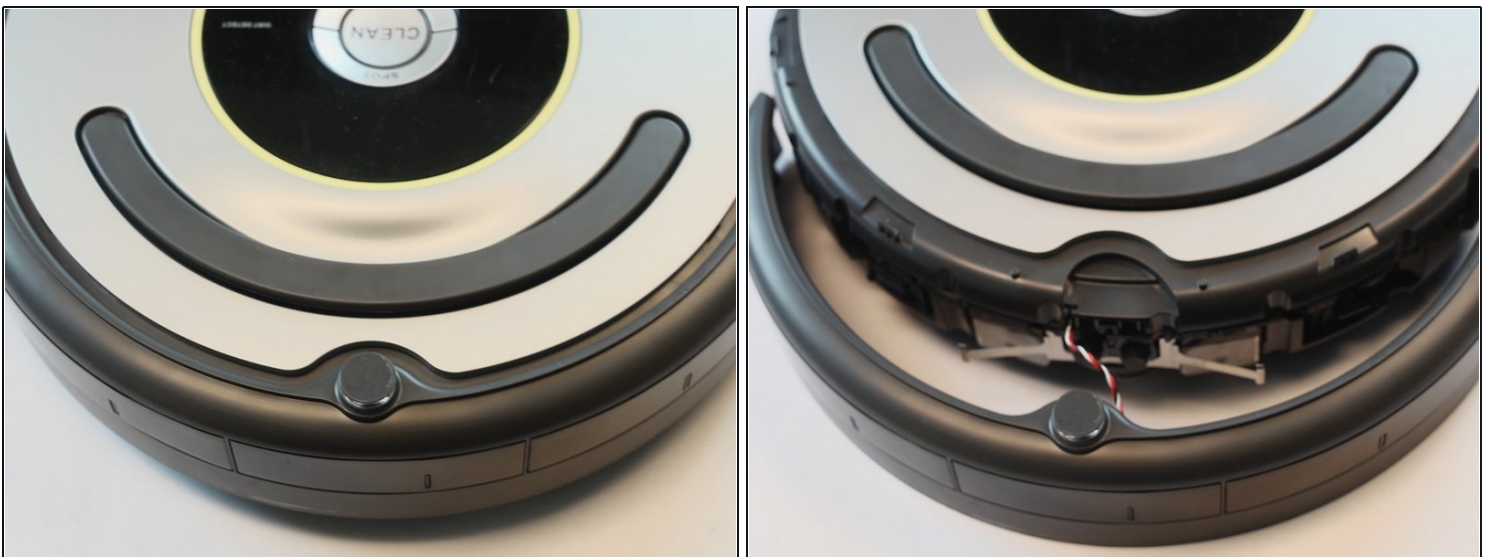
- Unscrew the (4) four back plate screws using the Phillips #2 screwdriver.
- Lift the back plate off of the device.

## Step 4



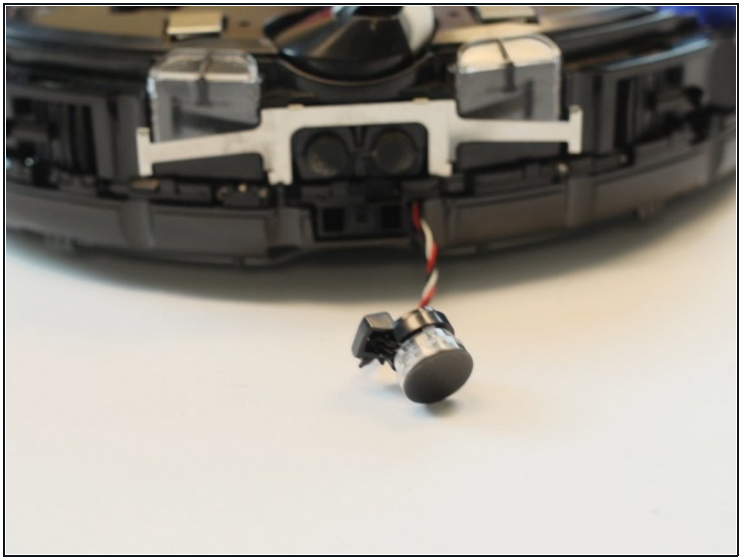
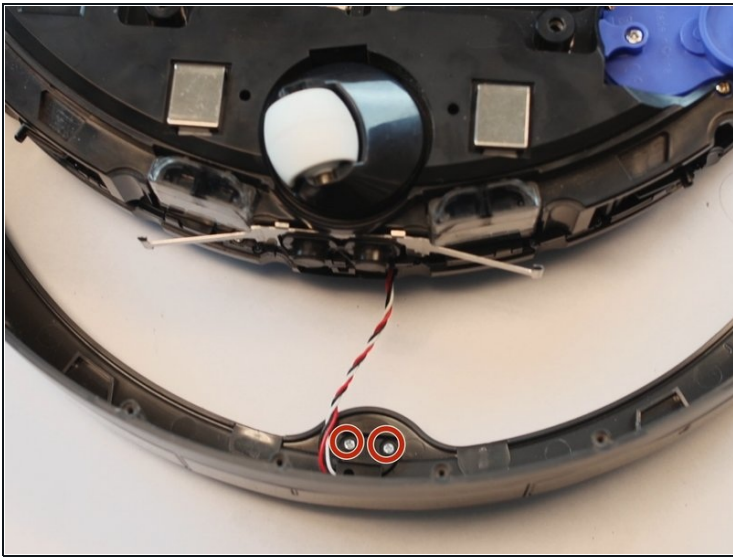
- Unscrew the screws on the bottom of the front bumper.

## Step 5



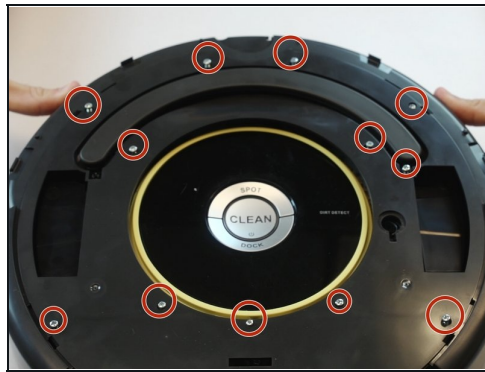
- Flip the device over and lift the front bumper up and off.
- ⓘ Lift with care so the sensor wires aren't damaged.

## Step 6



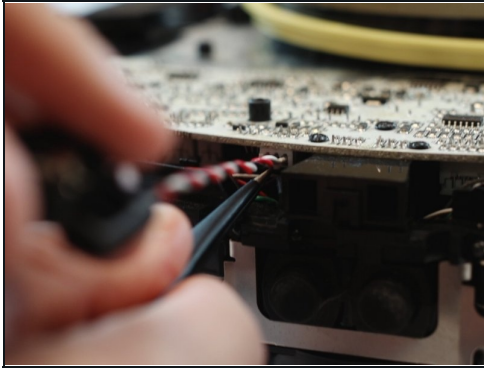
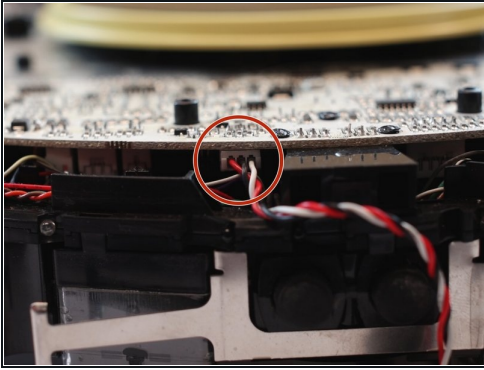
- Flip the Roomba back over and unscrew the 2 screws that connect the sensor to the bumper.

## Step 7



- Flip Roomba back over and pry the top cover off.
- Unscrew the screws to the top plate and lift off.

## Step 8



- Use tweezers or another tool to push up on the insert while gently pulling the sensor out by its wires.
- Remove the sensor.

---

To reassemble your device, follow these instructions in reverse order.