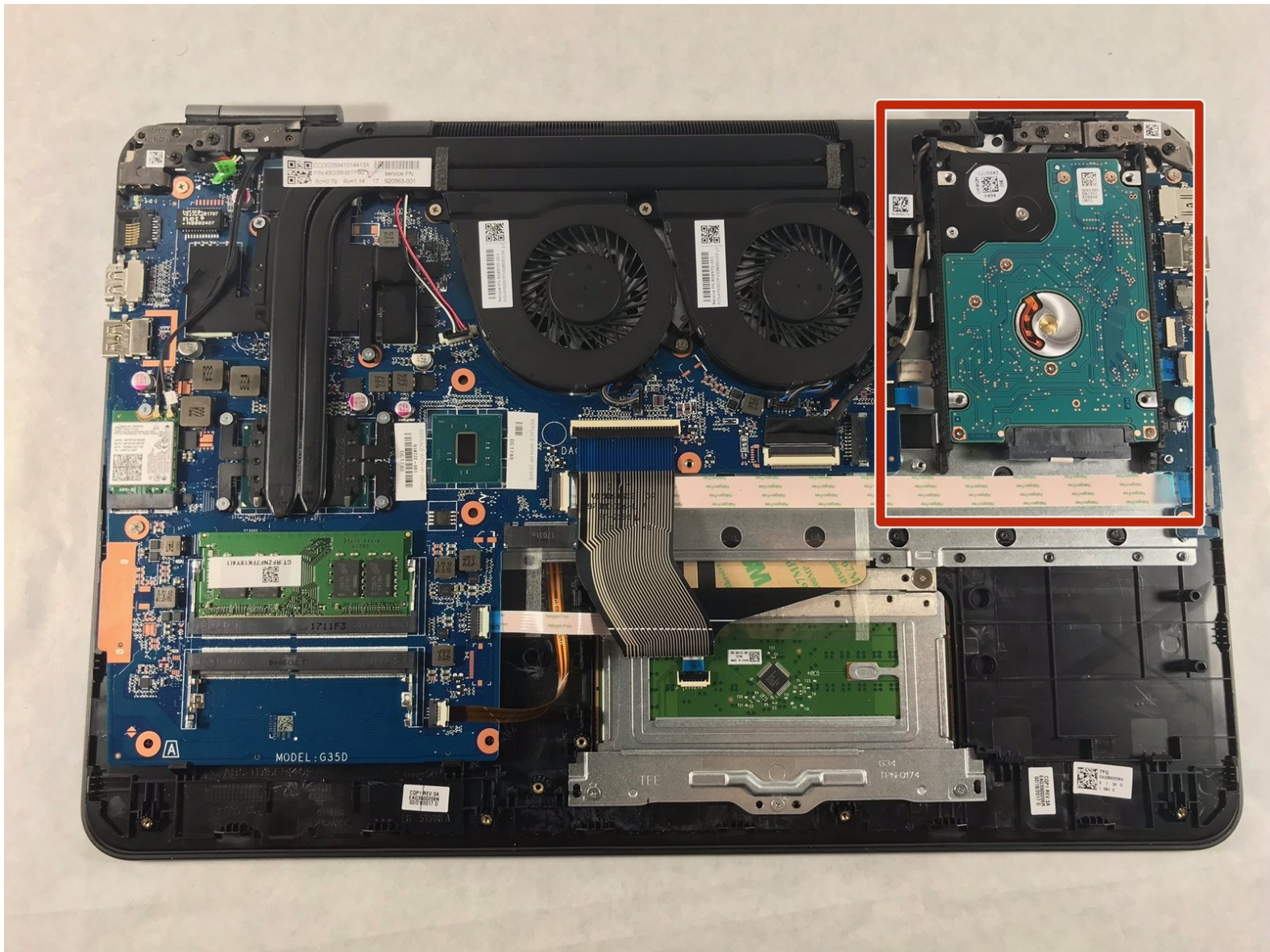




HP Omen 15-ax243dx Hard-Drive Replacement

This guide will show you a step by step instruction of how to remove the hard-drive.

Written By: vangnam



INTRODUCTION

Does your hard-drive not have enough stroage and you want to swap it for a larger storage hard-drive? Well, reading this guide will show how. To disassembly the hard-drive on this computer, it is very easy and will only take about 5 minutes. This guide includes the pre-requeste of removing the back cover and the battery. Once you the back cover and the battery, removing the hard-drive is as easy as flip, pull, lift. The tools that you will need are one, a Philips #00 screw driver and two, a blue plastic opening tool.



TOOLS:

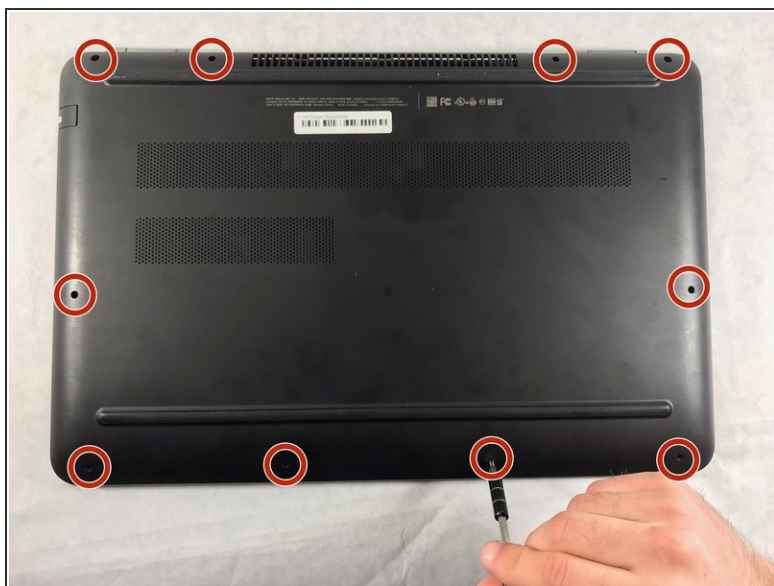
- [Phillips #00 Screwdriver](#) (1)
- [iFixit Opening Tool](#) (1)



PARTS:

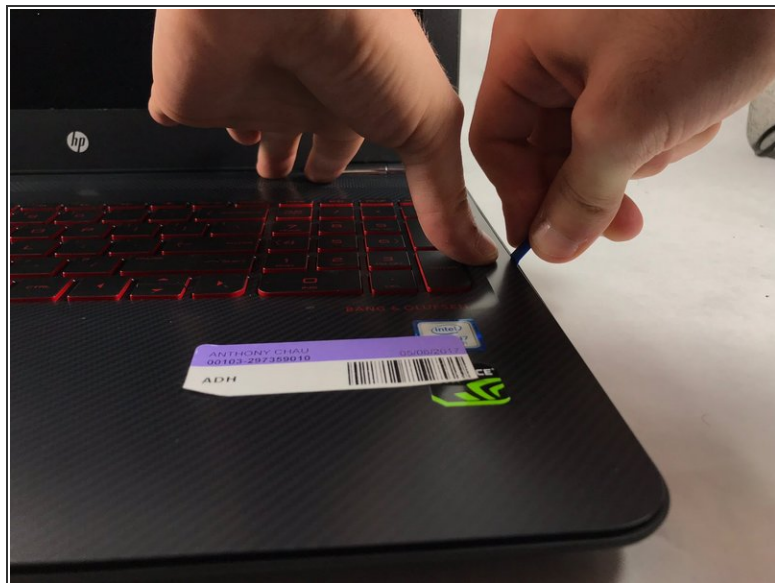
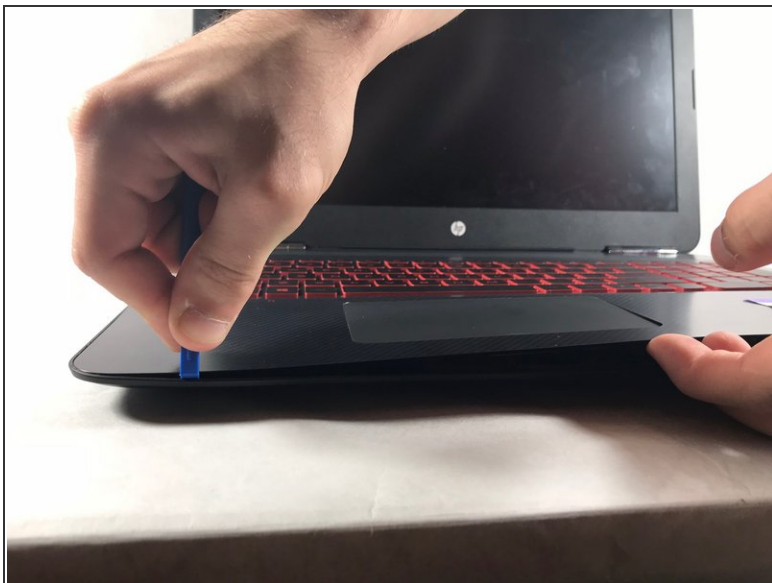
- [250 GB SSD](#) (1)
- [500 GB SSD](#) (1)
- [1 TB SSD](#) (1)
- [2 TB SSD](#) (1)

Step 1 — Battery



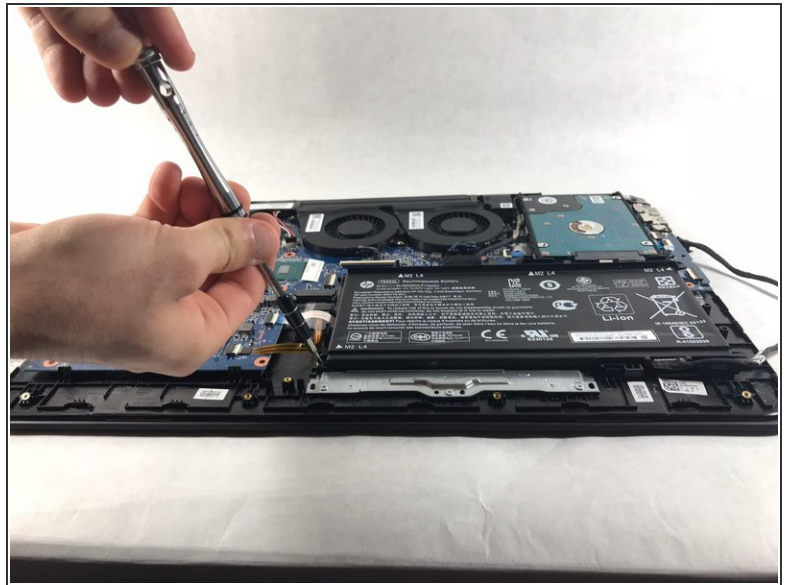
- The rear panel is secured by 10 screws. Using a #00 Phillips Screwdriver, remove the ten 1.2 mm screws.
- The screwdriver should be inserted at the same angle as the screws.
- ⓘ *Be sure to keep track of the screws and where they came from. Some only fit in to one spot.*

Step 2



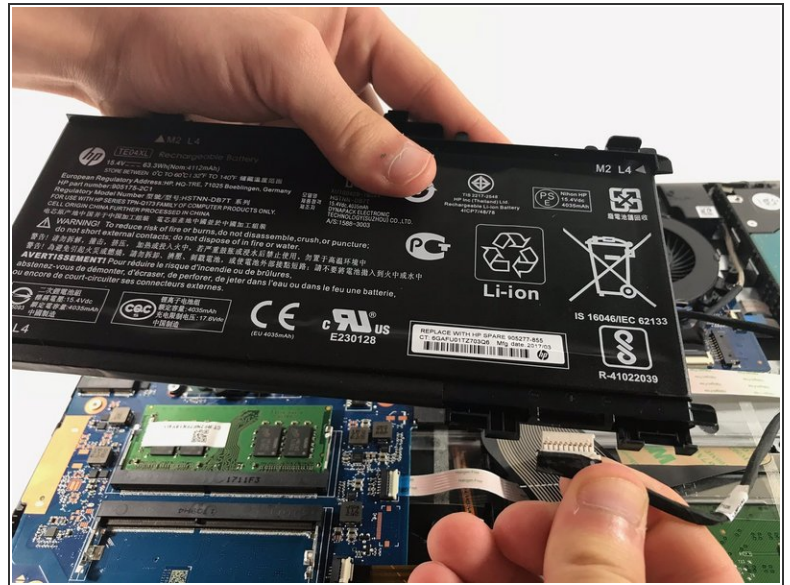
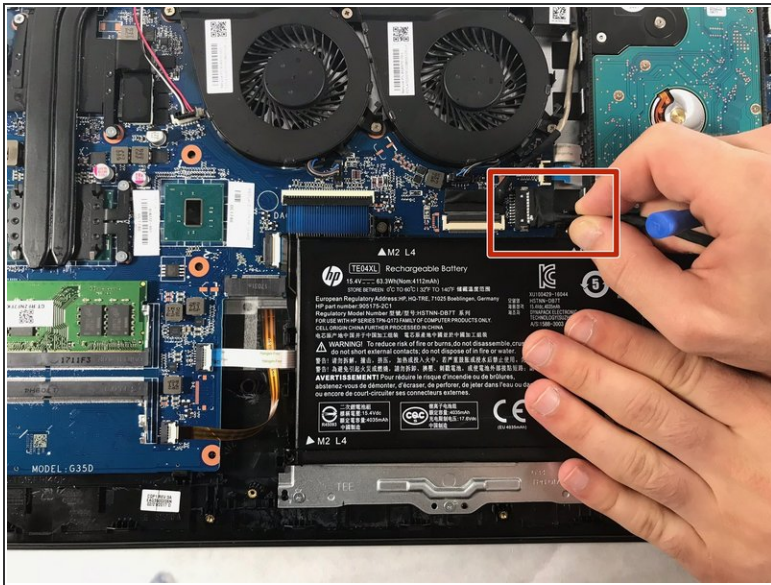
- Insert a plastic opening tool between the rear panel and the top case. Pry the opening tool upwards to separate the top case from the bottom case.
- Slide the opening tool along the case perimeter to loosen the bottom case.
- Gently pull the bottom case away from the laptop.

Step 3



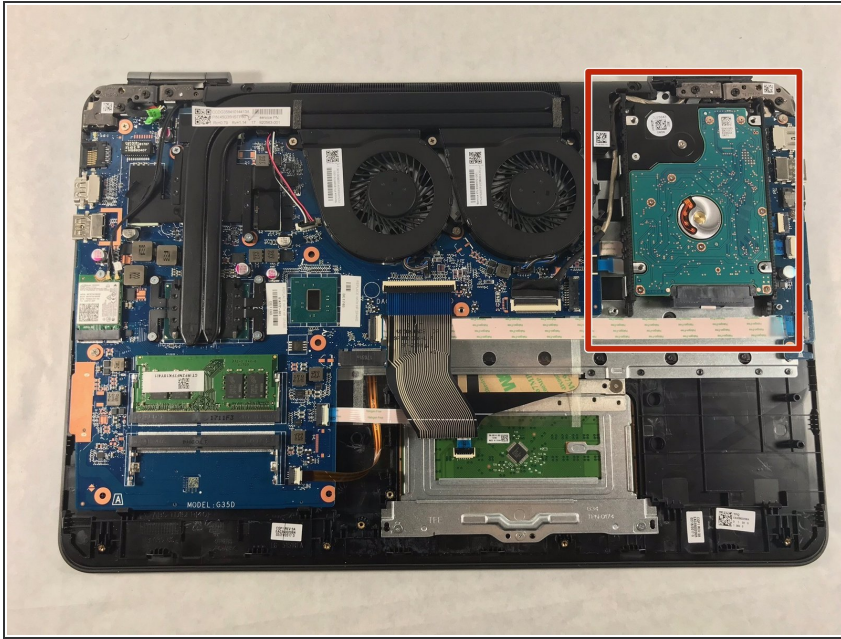
- Remove the four 1.2 mm Phillips #00 screws around the battery.

Step 4



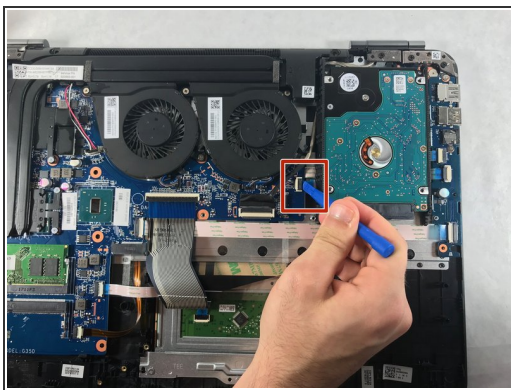
- Pull the battery cable out from its motherboard socket.
⚠ Pull parallel to the motherboard, not straight up.
- Remove the battery.
- Disconnect the power cord from the battery and transfer it to your replacement battery.

Step 5 — Hard-Drive



- After the battery is removed, the hard drive will be easier to access in the top right hand corner.

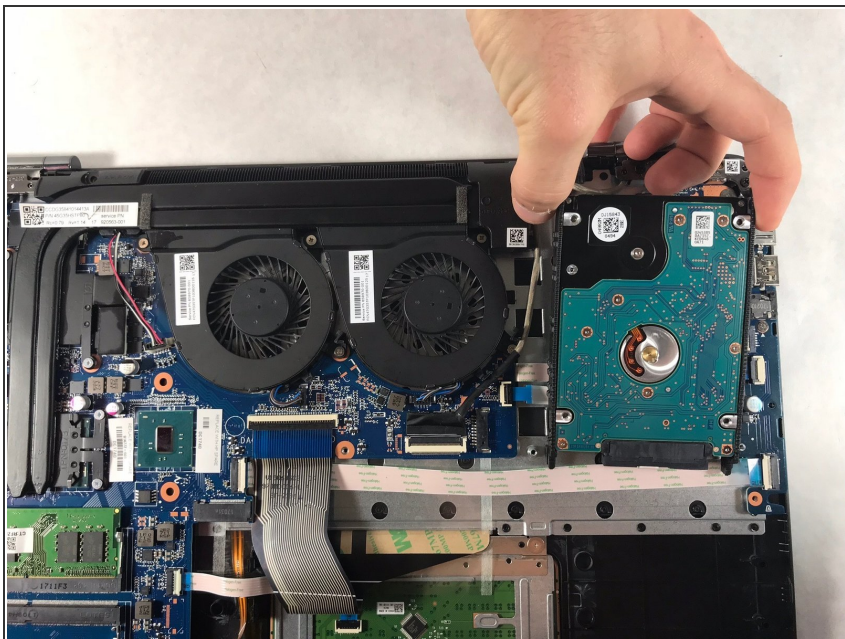
Step 6



- With a opening tool, flip open the switch that locks in the hard drive ribbon cable into the device.

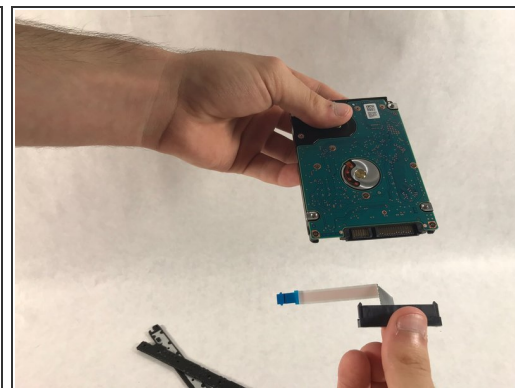
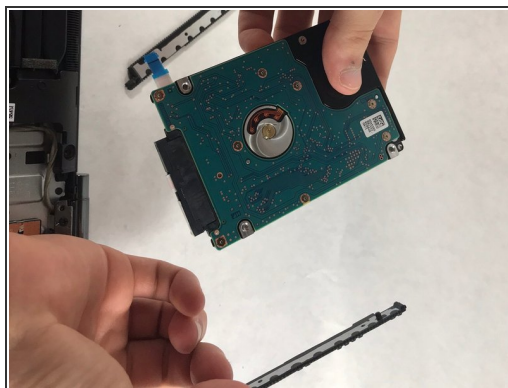
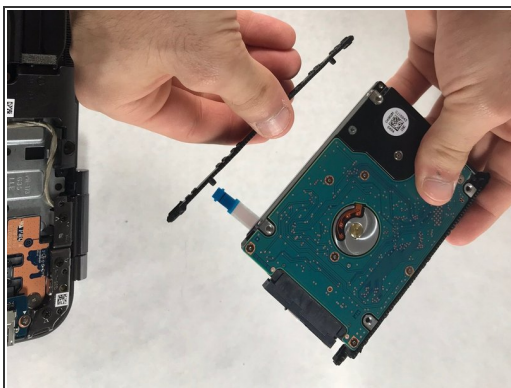
⚠ When lifting the cable out, lift straight up and out to prevent damage to the connector or cable.

Step 7



- Lift the hard drive up to remove from the device

Step 8



- Remove the rubber guards on the side of the hard drive.
 - Gently pull the plastic connector out from the hard drive.
 - The hard drive can now be disposed of if needed.
- i** Save the guards and connectors from this hard drive, they will be used on the replacement part.

To reassemble your device, follow these instructions in reverse order.

