



# HP Omen 15-ax243dx Battery Replacement

Battery draining quickly and not getting enough time on a charge to do your work? Follow this guide on how to replace your battery.

Written By: vangnam



# INTRODUCTION

Is your battery dying often? Does it not hold charge or even not charge at all? Follow this guide to successfully remove and replace the battery from your HP-Omen laptop.



## TOOLS:

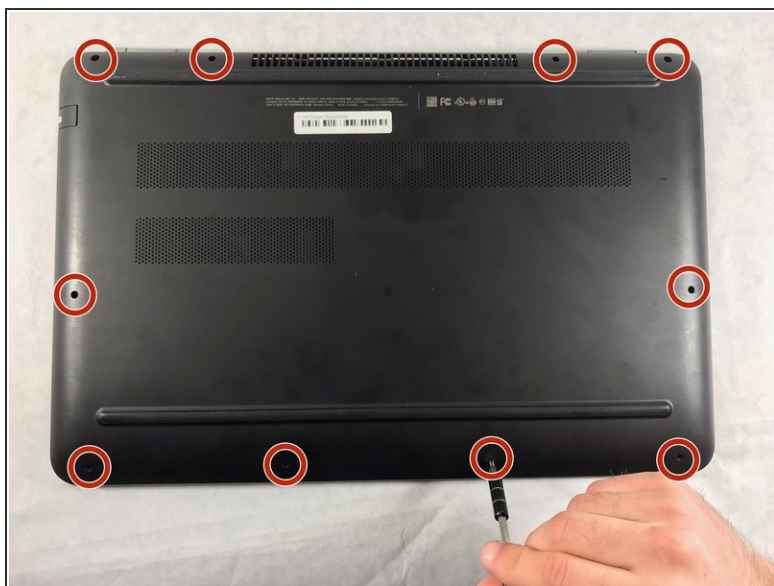
- [iFixit Opening Tools](#) (1)
- [Phillips #00 Screwdriver](#) (1)



## PARTS:

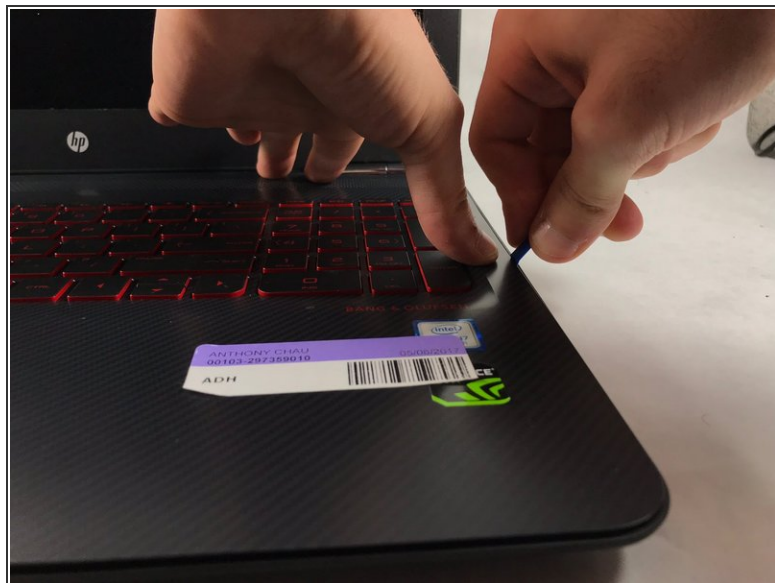
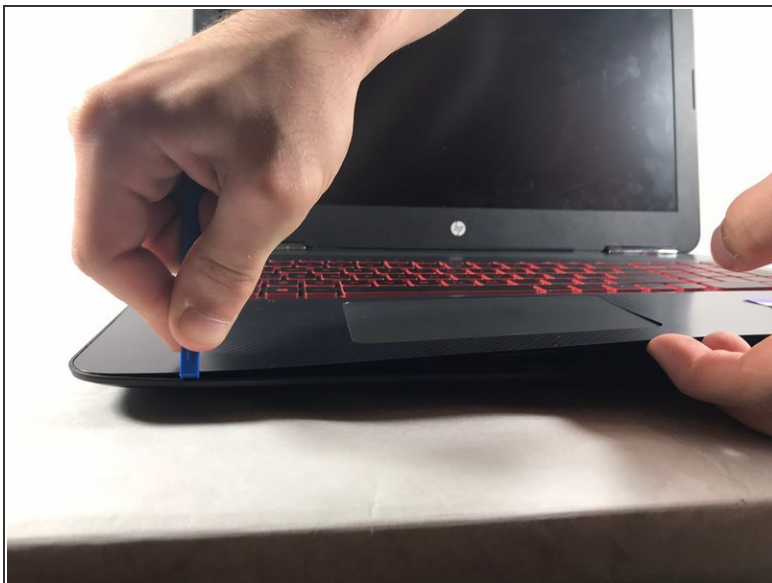
- [HP Omen 15 Replacement Battery](#) (1)

## Step 1 — Battery



- The rear panel is secured by 10 screws. Using a #00 Phillips Screwdriver, remove the ten 1.2 mm screws.
- The screwdriver should be inserted at the same angle as the screws.
- ⓘ *Be sure to keep track of the screws and where they came from. Some only fit in to one spot.*

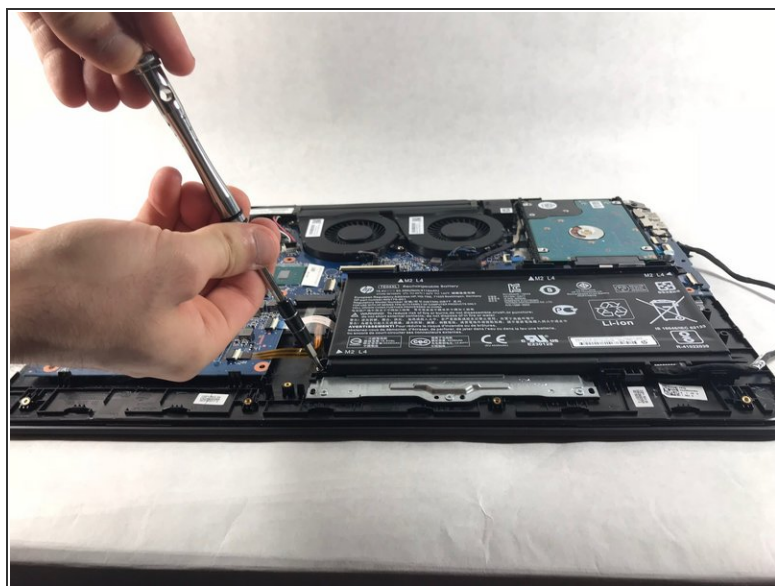
## Step 2



- Insert a plastic opening tool between the rear panel and the top case. Pry the opening tool upwards to separate the top case from the bottom case.
- Slide the opening tool along the case perimeter to loosen the bottom case.
- Gently pull the bottom case away from the laptop.

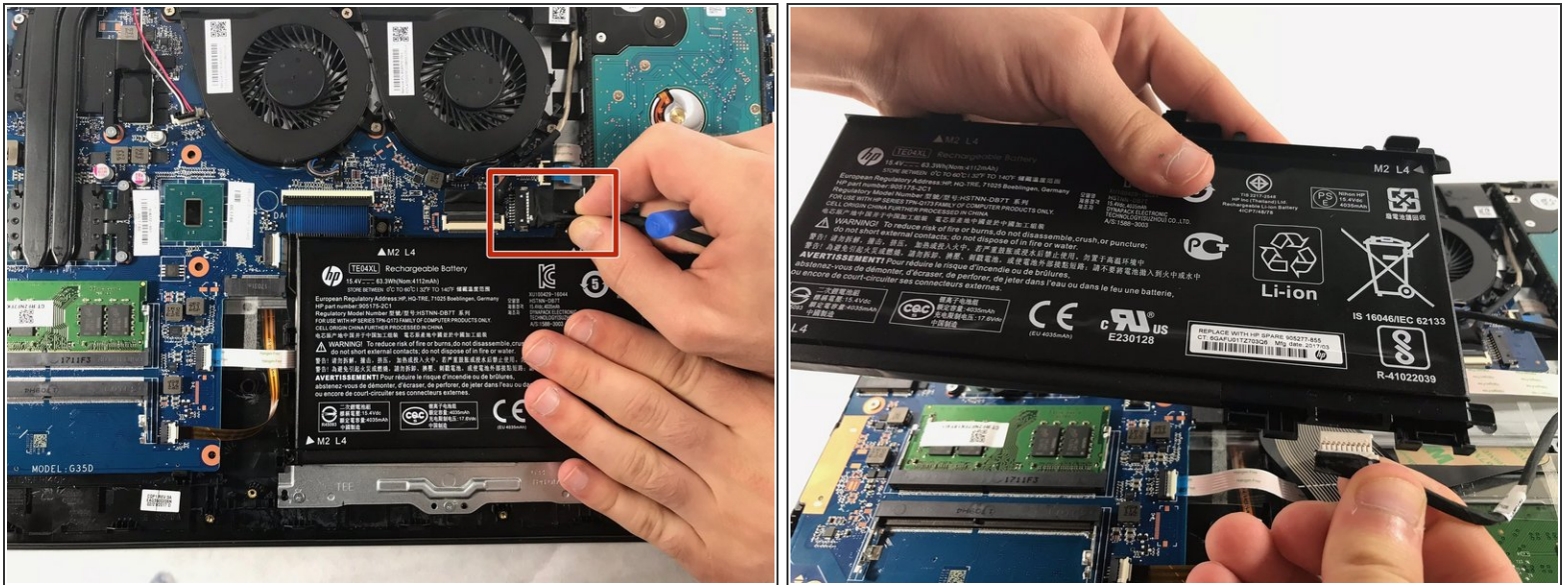


## Step 3



- Remove the four 1.2 mm Phillips #00 screws around the battery.

## Step 4



- Pull the battery cable out from its motherboard socket.  
⚠ Pull parallel to the motherboard, not straight up.
- Remove the battery.
- Disconnect the power cord from the battery and transfer it to your replacement battery.

To reassemble your device, follow these instructions in reverse order.

For optimal performance, after completing this guide, [calibrate](#) your newly installed battery.

Take your e-waste to an [R2 or e-Stewards certified recycler](#).

Repair didn't go as planned? Try some [basic troubleshooting](#), or ask our [Answers community](#) for help.