



# Dell Inspiron 15-5548 Battery Replacement

This guide will show you how to replace the battery in the Dell Inspiron 15-5548.

Written By: Hunter Oliver



## INTRODUCTION

This is a guide to show you how to replace the Dell Inspiron 15-5548 battery. Make sure that the laptop is unplugged and powered off before beginning this procedure.



### TOOLS:

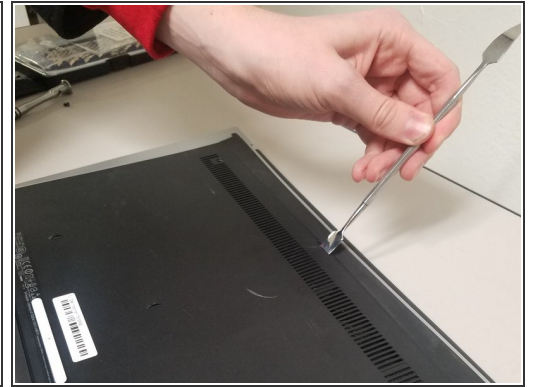
- [Phillips #00 Screwdriver](#) (1)



### PARTS:

- [Dell 58 WHr 4-Cell Primary Lithium-Ion Battery](#) (1)

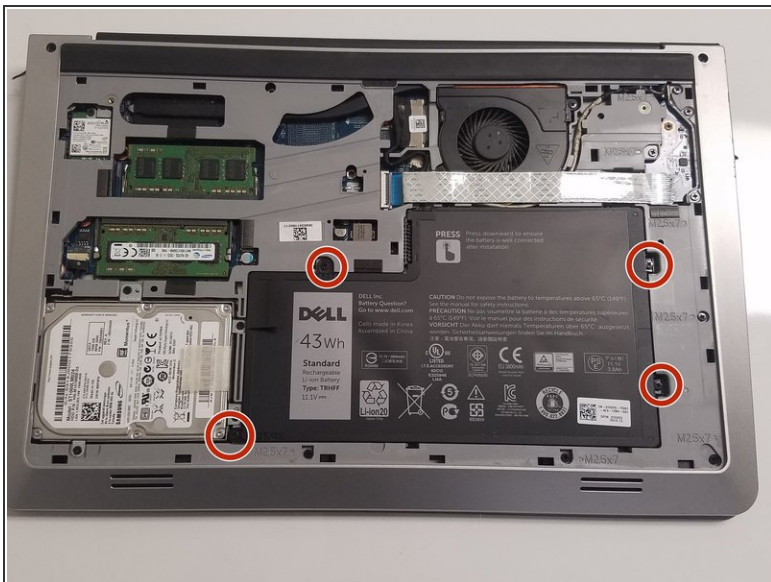
## Step 1 — Battery



**⚠** Make sure the computer is unplugged and turned off before you start this procedure.

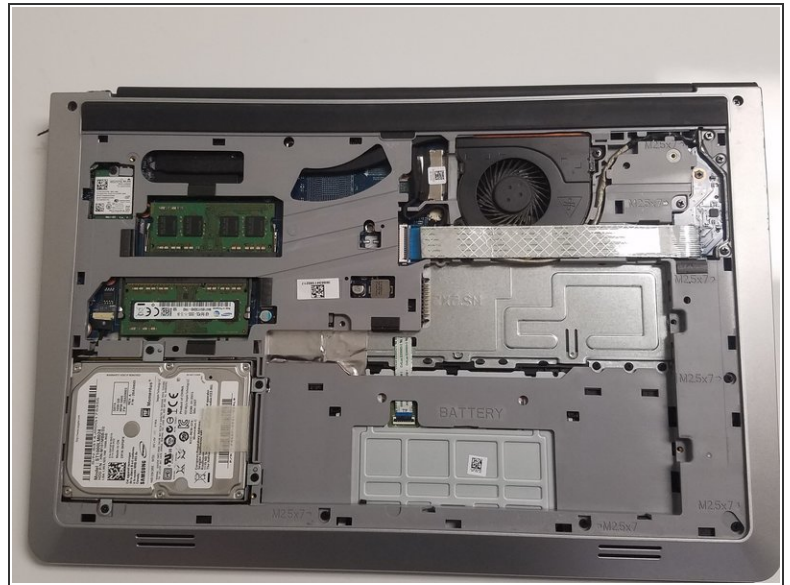
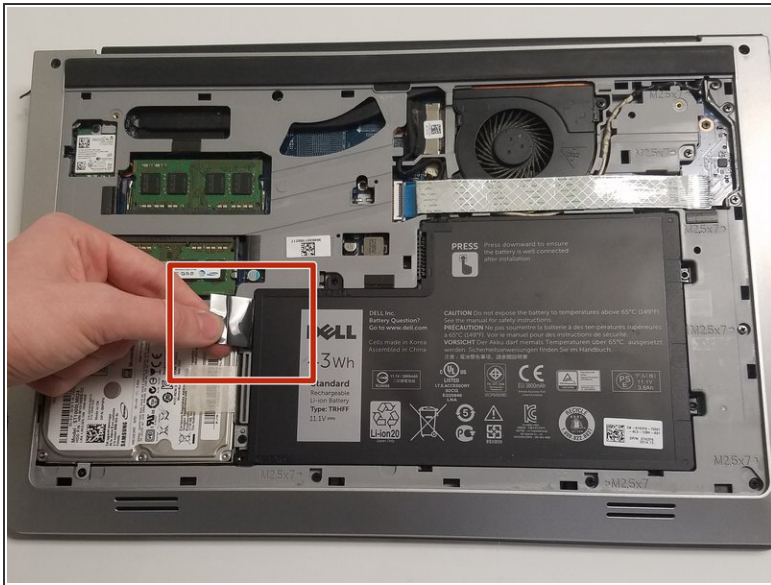
- Look on the bottom of the computer. Locate the 2 screws. (Picture 1)
- Using the Phillips 00 Screwdriver, unscrew both screws, and remove the bottom cover. The bottom cover can be hard to pull off, so you may need to pry it off with a pry tool.

## Step 2



- Locate the large black battery.
- Locate the 4 screws on the battery, and remove them using the Philips 00 Screwdriver.

## Step 3



- Pull up on the release tab.
- Remove the battery.

To reassemble your device and add in a new battery, follow these instructions in reverse order.