



Alienware 17 R2 Battery Replacement

This guide will show you how to replace your faulty Alienware 17 R2 battery.

Written By: Luis Garcia



INTRODUCTION

Use this guide to replace the battery on an Alienware 17 R2 laptop.

Your laptop may need a new battery if it will not hold a charge or will not turn on without being connected to the charger. While replacing the laptop battery might fix this issue, it may not be a permanent solution. Please be cautious if the battery appears to be swollen.

Some knowledge and understanding of computer motherboards will be beneficial, however, minimal repair skill is required. Before beginning, make sure to power down the computer completely and disconnect it from any external power source.



TOOLS:

- [Phillips #0 Screwdriver](#) (1)



PARTS:

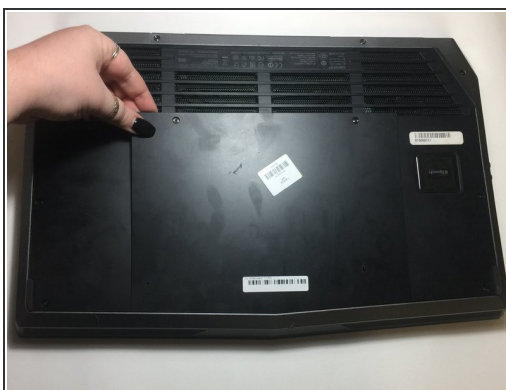
- [Dell Alienware 17 R2/R3 Battery](#) (1)

Step 1 — Battery



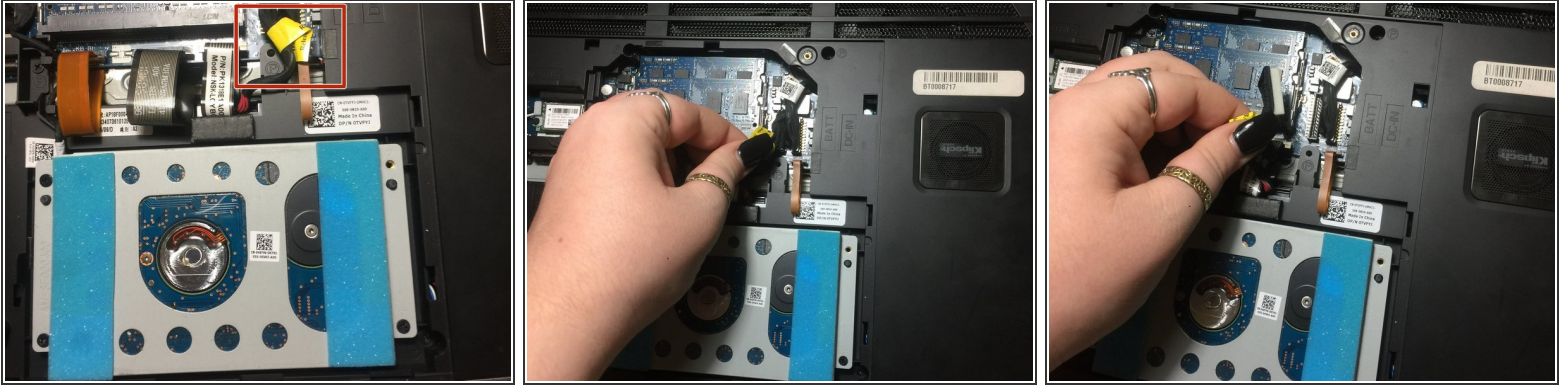
- Be sure the laptop is turned off.
- Unplug the laptop from the power adapter.
- Place the laptop face down on a hard surface.

Step 2



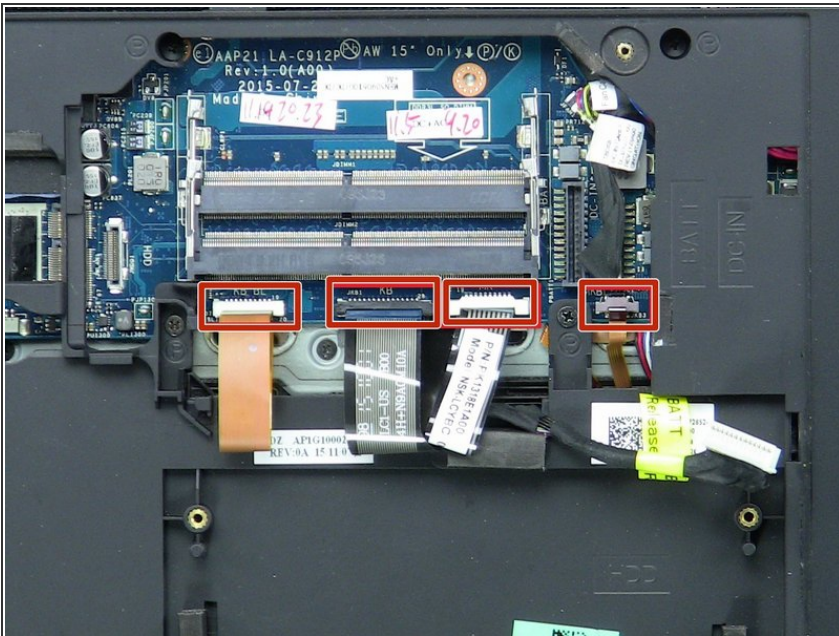
- Remove the two screws on the access door.
- Pull up the access door and slide it off.

Step 3



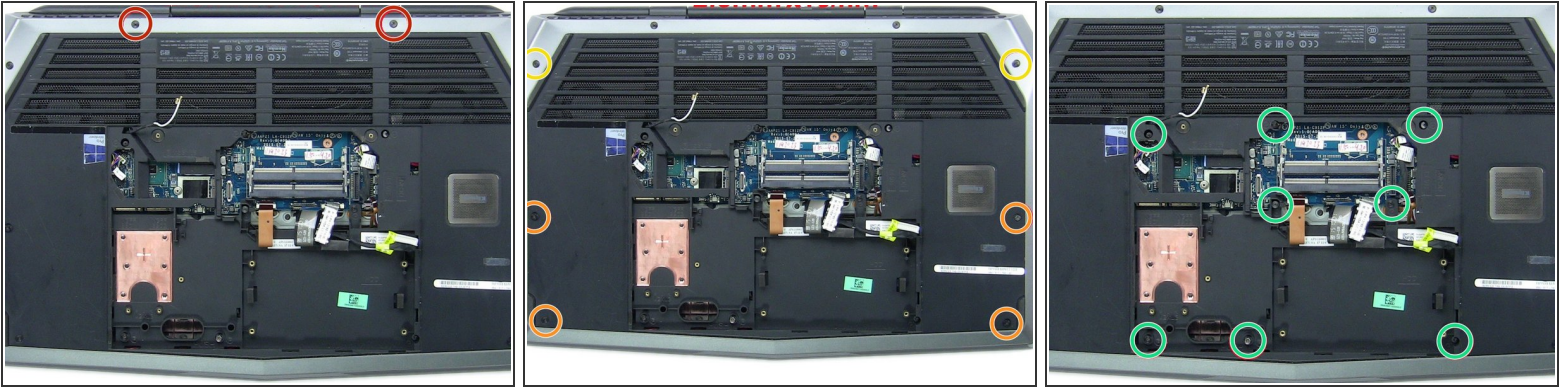
- Carefully unplug the black cord with the yellow tag to disconnect the battery.

Step 4



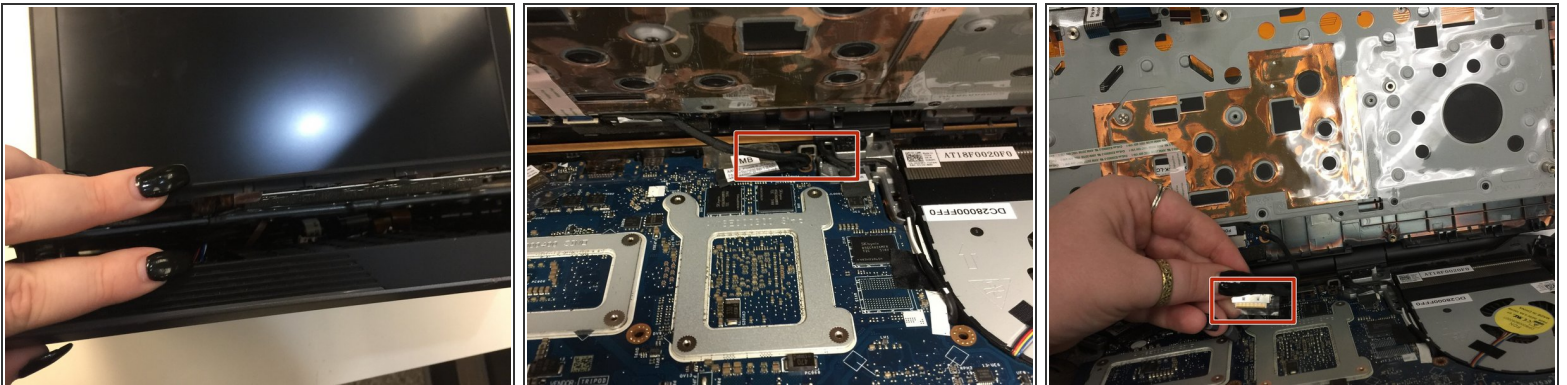
- Disconnect the four cables from the motherboard.
- ⓘ To unlock a [ZIF connector](#), use the tip of a spudger or your fingernail to flip up the small, hinged locking flap. Carefully slide the unlocked cable out of the socket.
- ⚠ Be careful when disconnecting the cables. Their connectors are very fragile and if too much force is applied, they can come out of the PCB, causing permanent damage.

Step 5



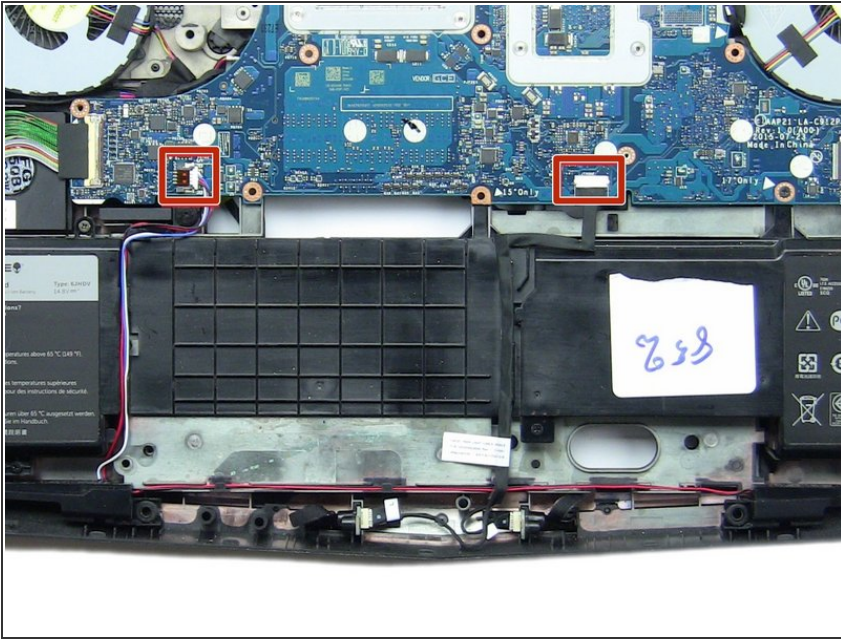
- Remove the two 2.5mm x 18mm screws from the top of the laptop.
- Remove the four 2.5mm x 10mm screws from the left and right sides of the laptop.
- Remove the two 2.5mm x 10mm screws from the top corners.
- Remove the eight 2.5mm x 8mm screws from the middle of the laptop.

Step 6



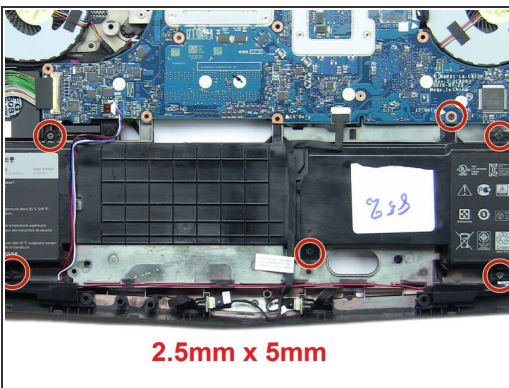
- Slowly separate the palm rest from the laptop.
- Disconnect the power cord from the laptop to the palm rest.
- Remove the palm rest.

Step 7

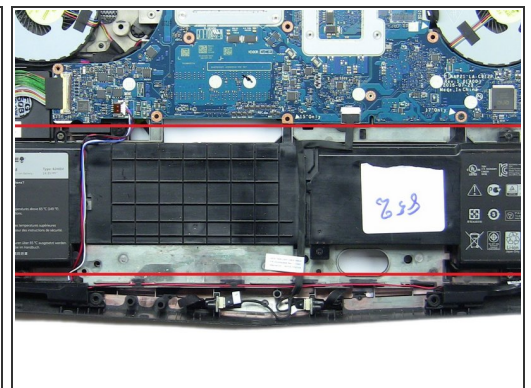


- Unplug the two cables from the laptop.

Step 8



2.5mm x 5mm



- Remove the six 2.5mm x 5mm screws.
- Gently lift up and remove the battery.

To reassemble your device, follow these instructions in reverse order.