



# M3D Micro Nozzle Replacement

This guide will show you how to replace the M3D's nozzle.

Written By: Yuliya Marusyk



---

## INTRODUCTION

The nozzle is where the M3D's filament is extruded from, so it's a crucial component. If something is wrong with your nozzle, it's likely that your printer won't function properly. Luckily, the [M3D Store](#) sells a replacement nozzle that you can easily substitute for the faulty nozzle on your machine. The nozzle is easily accessible and as such, easy and quick to replace.

---

### TOOLS:

- [Metal Spudger](#) (1)
  - [5mm Nut Driver](#) (1)
-

## Step 1 — Fan



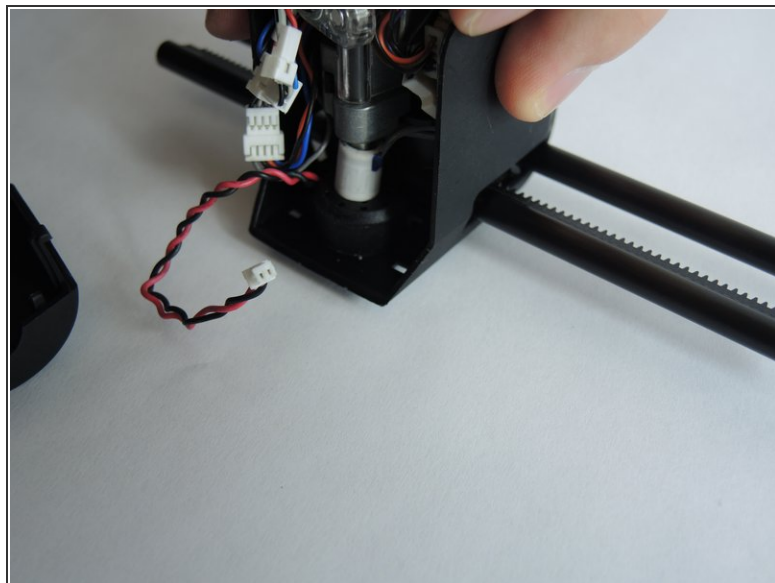
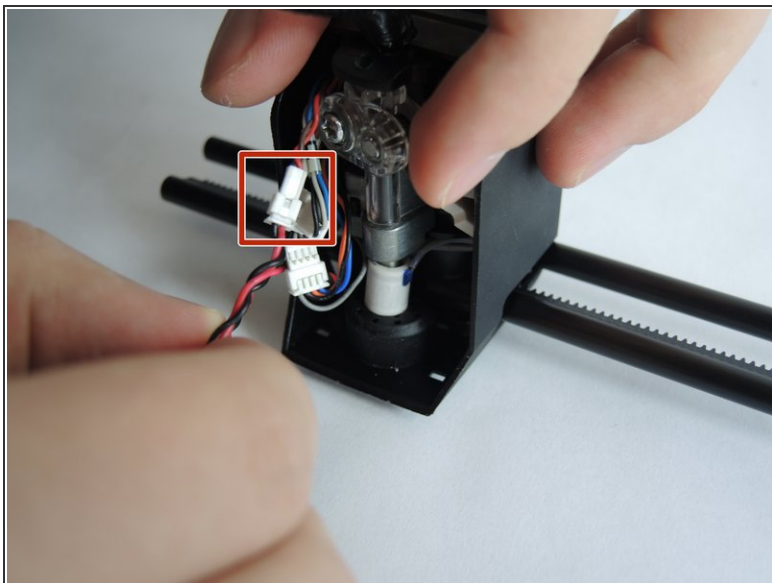
- To release the x-rods, pull the x-rods away from the plastic sliders on the y-rods, and flip the slider upwards to release the tracks.

## Step 2



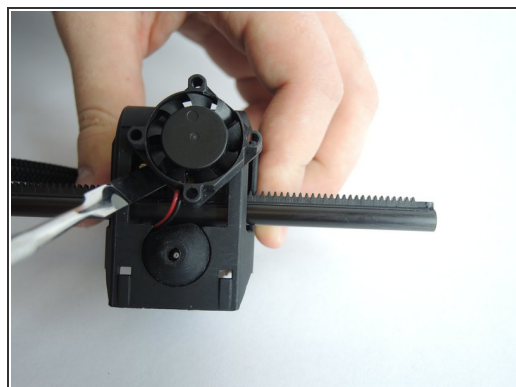
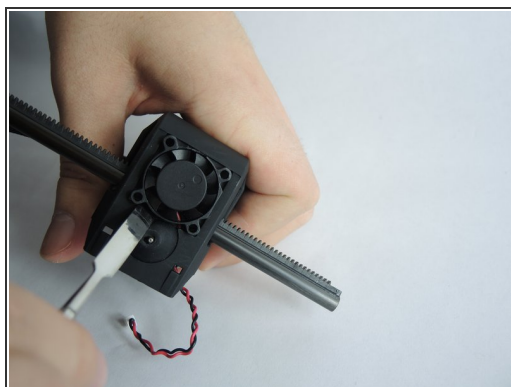
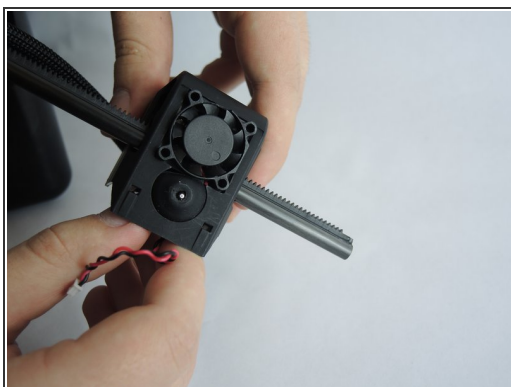
- Slide the tracks off the second slider and remove the printer head and x-tracks from the center of the printer. To remove the front cover of the print head, firmly grip the cover and gently pull it off.

### Step 3



- Disconnect the red and black wires at the white connector. They should easily separate.

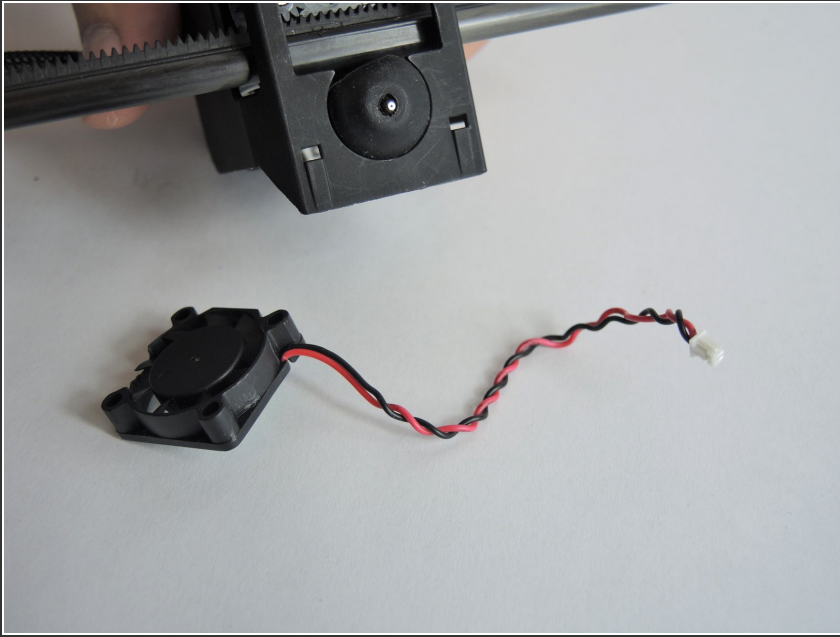
### Step 4



- The fan is held loosely in place at the base of the printer head. Use a metal spudger to gently pry it out of the printer head.

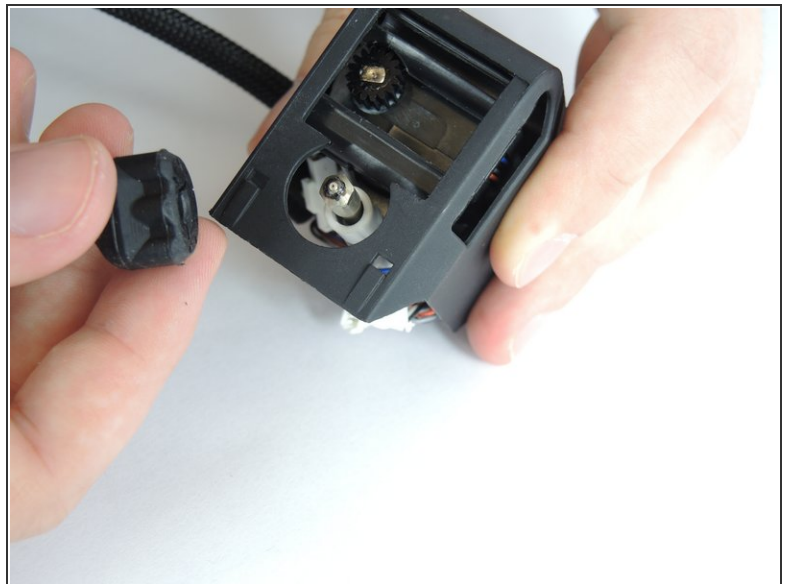


## Step 5



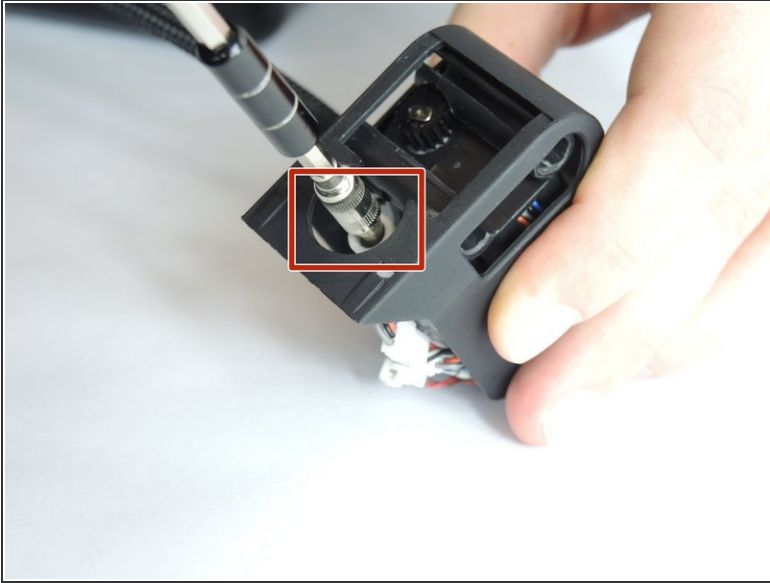
- Pull the fan all the way out of the printer head.

## Step 6 — Nozzle



- To remove the nozzle insulation, grip the insulation and pull it up off of the nozzle.

## Step 7



- To remove the nozzle, use a 5 mm nut driver to unscrew it.

To reassemble your device, follow these instructions in reverse order.