



# Nvidia Shield TV 1st Generation Controller

## Battery Replacement

This guide shows how to remove the controller battery on the controller paired with the Nvidia Shield TV 1st Generation.

Written By: Joshua Neally



## INTRODUCTION

You will need to replace the battery in your controller if it is not holding a charge or your controller is not turning on. When taking apart the controller, be careful as the buttons are not held in place by anything and can easily fall out.



### TOOLS:

- [T6 Torx Screwdriver](#) (1)
  - [iFixit Opening Tools](#) (1)
  - [Tweezers](#) (1)
-

## Step 1 — Controller Battery



- Remove the indicated six screws using the T6 Torx screwdriver.

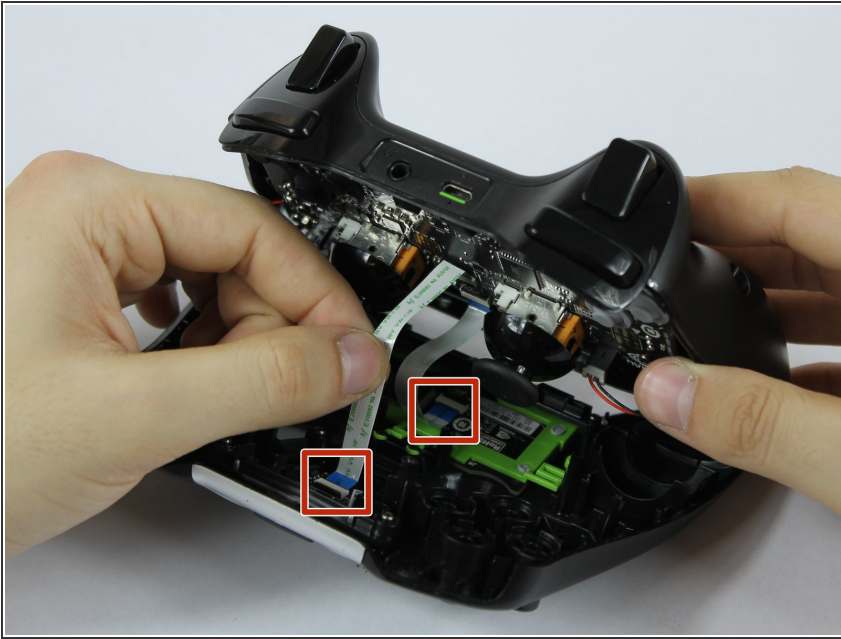
## Step 2



- Use the plastic opening tool to pry the face of the controller away from the body.

⚠ Make sure the controller is face down during this step as the buttons can easily fall out.

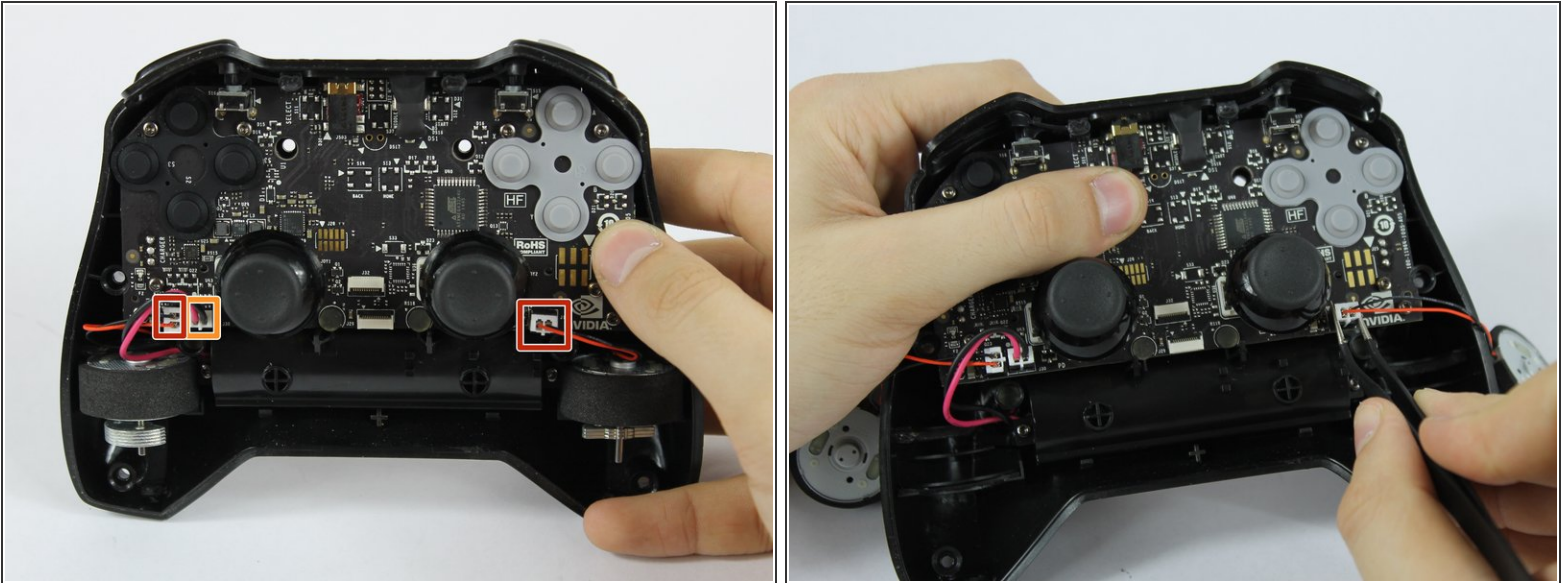
## Step 3



- Carefully remove the indicated ribbon wires from the face of the controller.



## Step 4



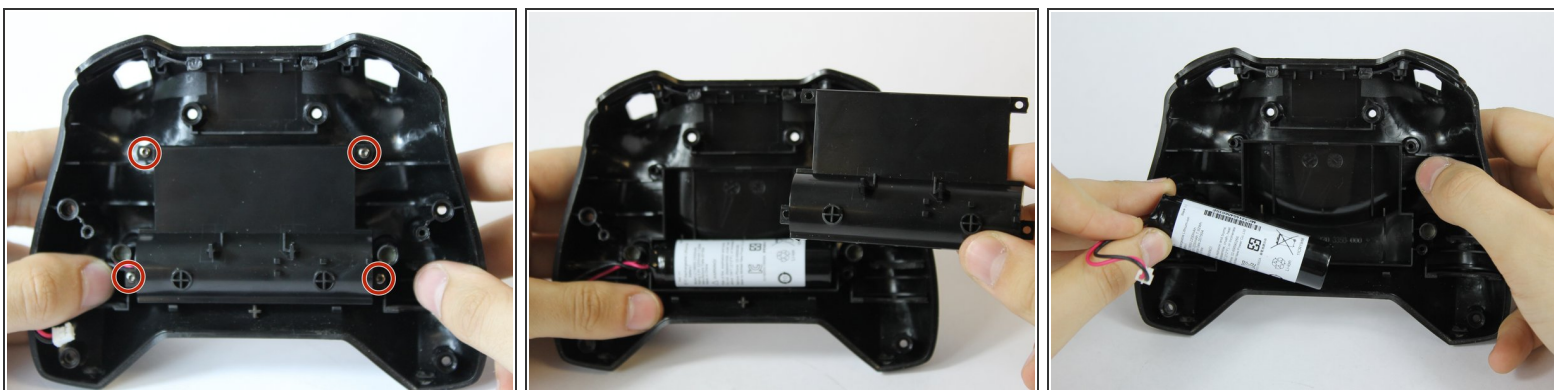
- Use the angled tweezers to remove the vibration motor cable, moving it upward from its socket.
  - Lift the vibration motor out of the front case.
  - Repeat for the other side.
- Use the angled tweezers to remove the battery cable, moving it upward from its socket.

## Step 5



- Using the T6 Torx screwdriver, remove the indicated eight screws from the logic board.
- Lift the logic board away from the front case.

## Step 6



- Using the T6 Torx screwdriver, remove the indicated four screws from the panel.
- Remove the panel from the front case.
- Lift the battery from the front case to remove it.

To reassemble your device, follow these instructions in reverse order.