



Asus X200CA Wifi Card Replacement

This guide will show you how to replace the wifi card of the Asus X200CA Laptop.

Written By: Jacqueline Collier

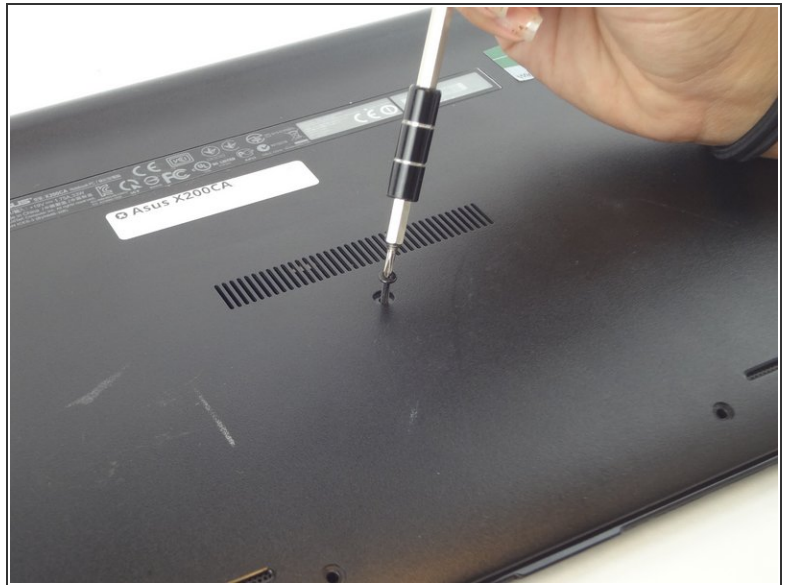




TOOLS:

- [Phillips #00 Screwdriver](#) (1)
 - [Tweezers](#) (1)
-

Step 1 — Keyboard



- Remove the 8 black 4.7mm screws securing the keyboard to the bottom cover.
- Remove the black 14.5mm screw from the center of the bottom cover.

Step 2



- Wedge a metal spudger between the keyboard and bottom cover and slide it around the perimeter until all edges separate.

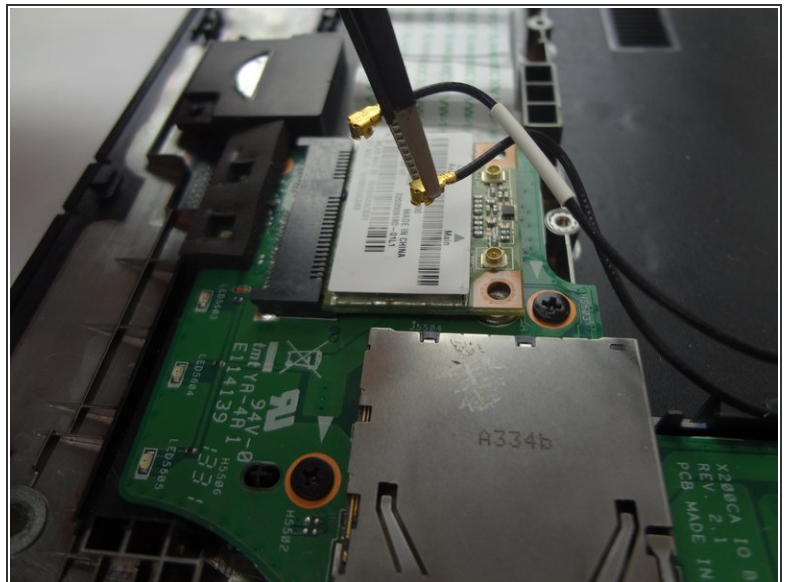
Step 3



- Pull apart the keyboard and the bottom cover using your hands.

⚠ The keyboard and trackpad cables are still connected to the mainboard via a ZIF connector. Carefully disconnect them before completely removing the keyboard to prevent damage to the board or cables.

Step 4 — Wifi Card



- Use a Phillips #00 screwdriver to remove the 2 screws.
- Use tweezers to separate the 2 coaxial connectors.

Step 5



- Use fingers or tweezers to remove the wifi card.

To reassemble your device, follow these instructions in reverse order.