



Samsung Chromebook XE500C21-A03US

Keyboard Replacement

Replace a faulty keyboard in a Samsung Chromebook XE500C21-A03US.

Written By: Alexandria Raessner



INTRODUCTION


A fast and simple guide to replace the keyboard to your Chromebook.


TOOLS:

- [Phillips #00 Screwdriver](#) (1)
 - [iFixit Opening Tools](#) (1)
 - [Precision Tweezers Set](#) (1)
 - [Phillips #000 Screwdriver](#) (1)
 - [Spudger](#) (1)
-

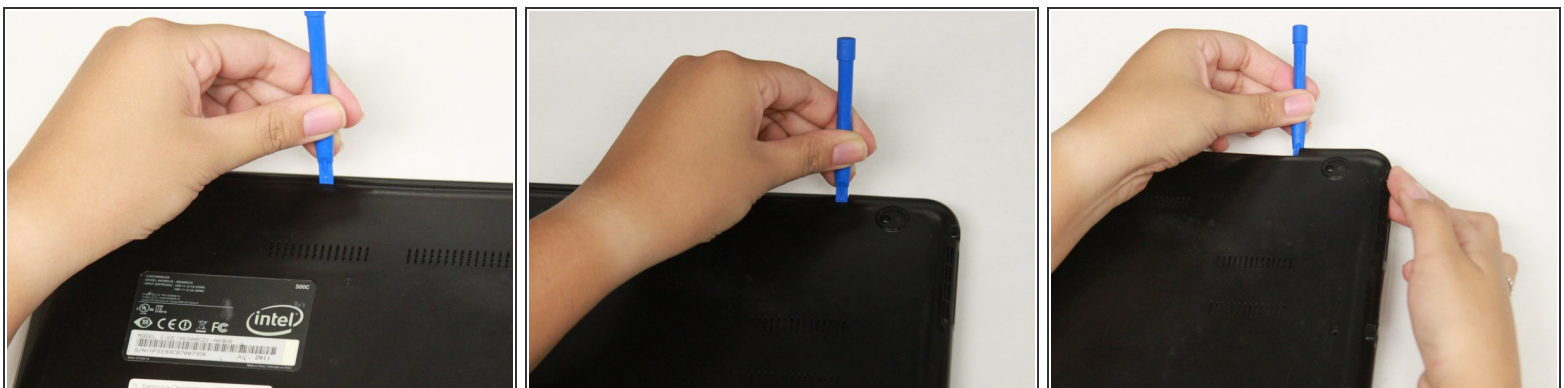
Step 1 — Back Cover



 Turn the power off before beginning this step.

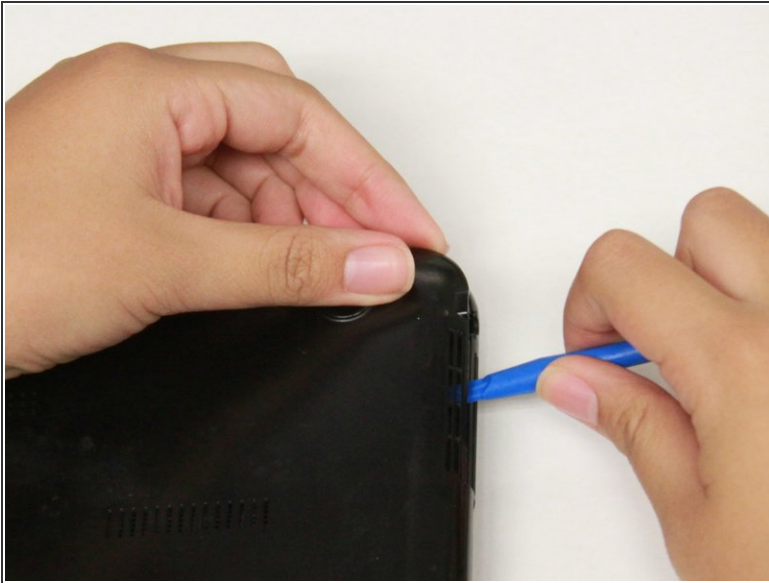
-  Most Chromebooks contain rubber circle pads on each of the four corners to cover the screws. In order to remove the rubber pads, simply use any opening tool.
- Lay the Chromebook down so that the bottom cover is facing upward.
- Using a Phillips #00 screwdriver, remove all seven 5.5 mm screws from the back cover.

Step 2



- Place the opening tool in the divot between the spine of the Chromebook and the back cover.
- Slowly glide and push down the end of the opening tool along all sides of the Chromebook to detach the brackets. You will hear the brackets detach.

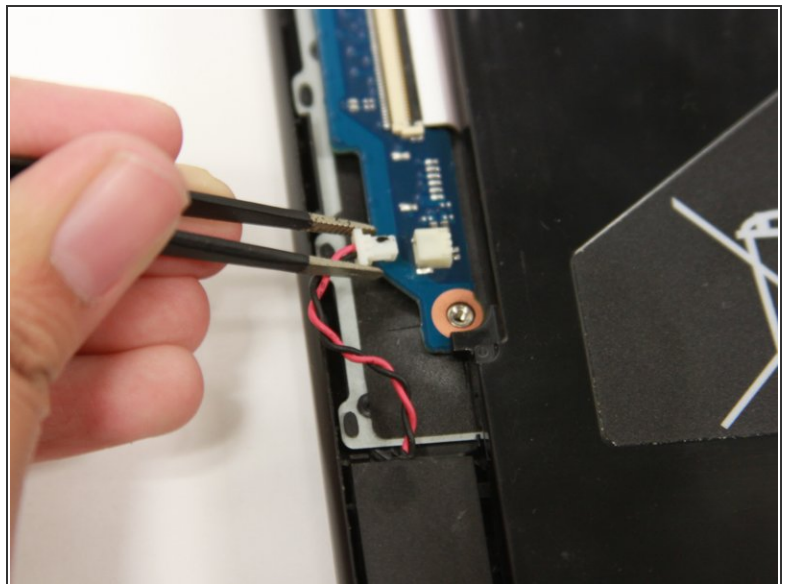
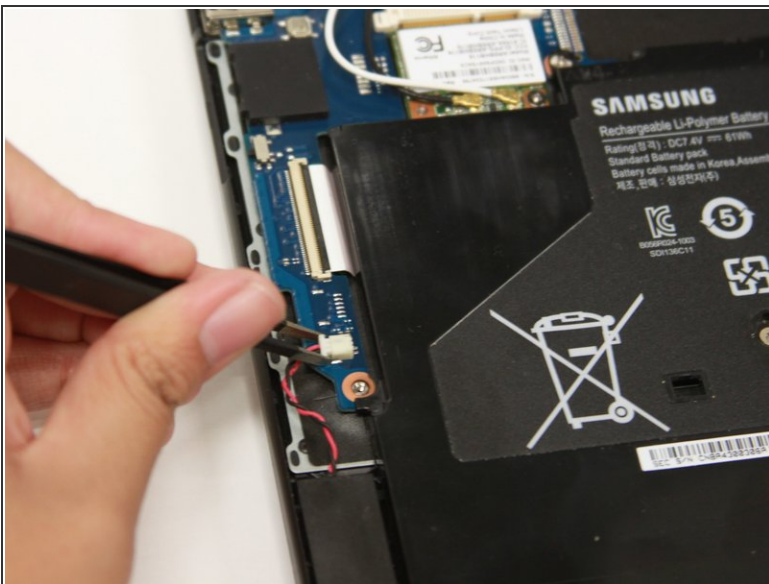
Step 3



- Using the opening tool, pry off the back cover of the Chromebook

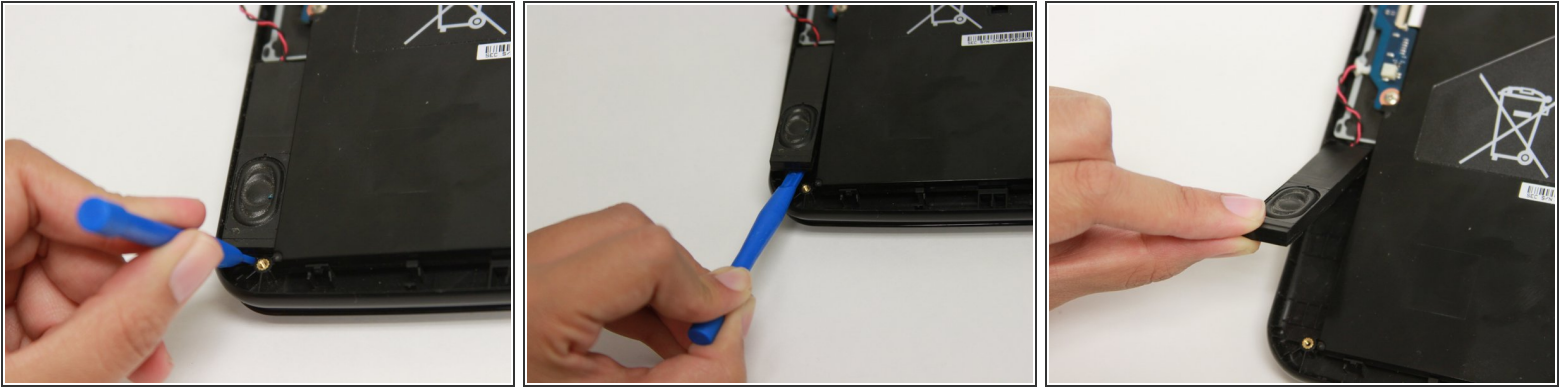
⚠ Be gentle while prying to avoid breaking the back cover.

Step 4 — Speakers



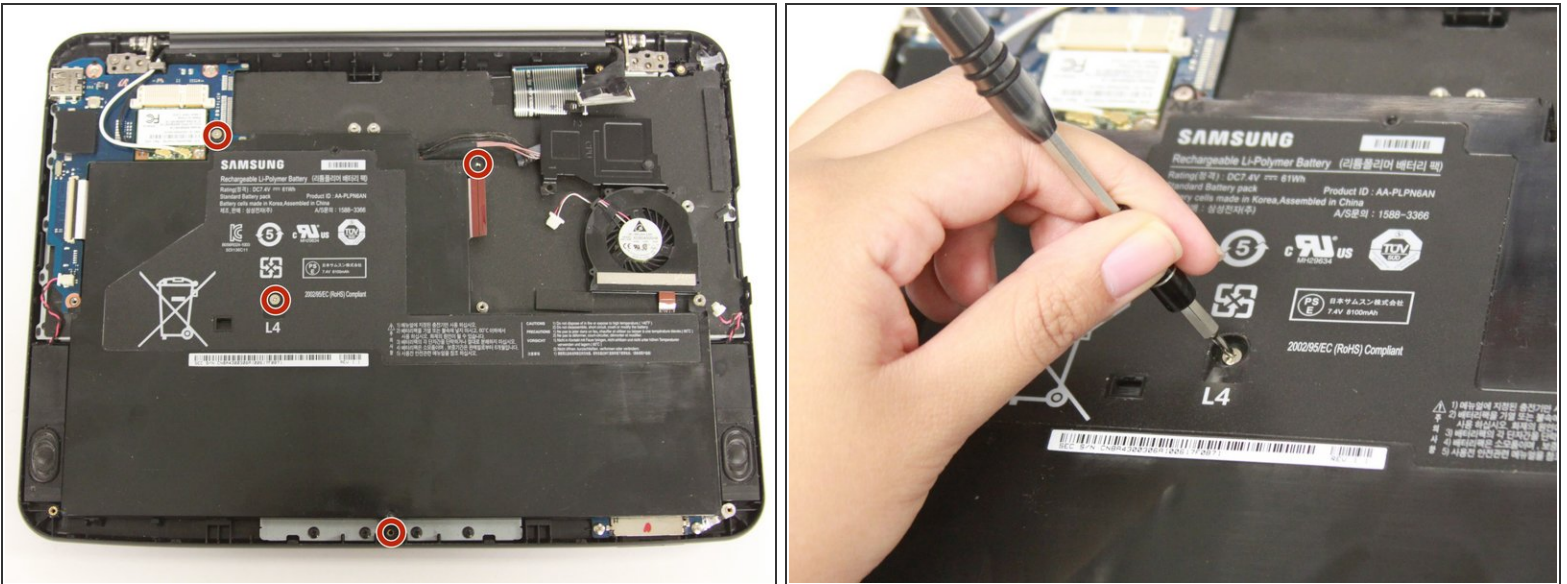
- Use a blunt precision tweezer to remove the speaker cord from the R.A.M.

Step 5



- Use the prying tool to find the divot then slowly add pressure until the speaker pops out.
- Gently lift and remove the speaker from the Chromebook.

Step 6 — Battery



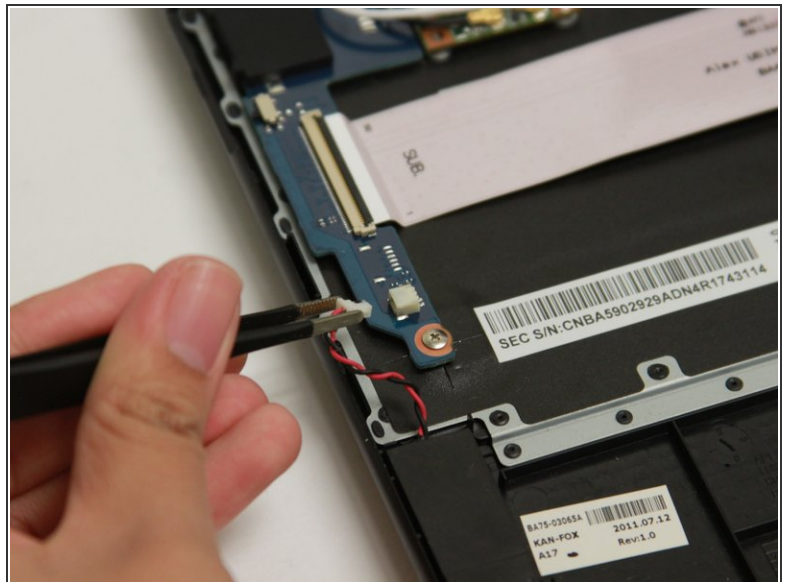
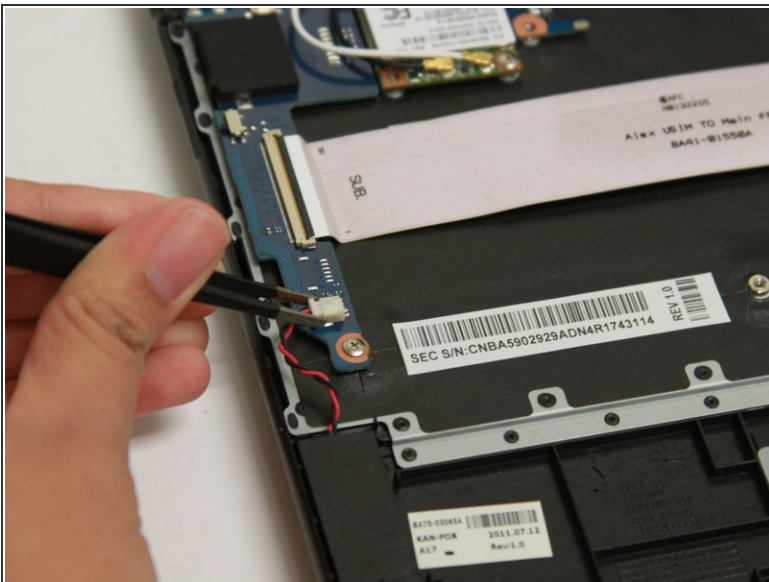
- Remove the four 3 mm screws using a Phillips #000 screwdriver.

Step 7



- Carefully lift the top of the battery then pull it away from you to remove it.
- ❗ Some batteries may be attached via a battery connector. Disconnect the battery connector by simply pulling straight up at its base.

Step 8 — RAM



- Use a blunt precision tweezer to remove the speaker cord from the RAM

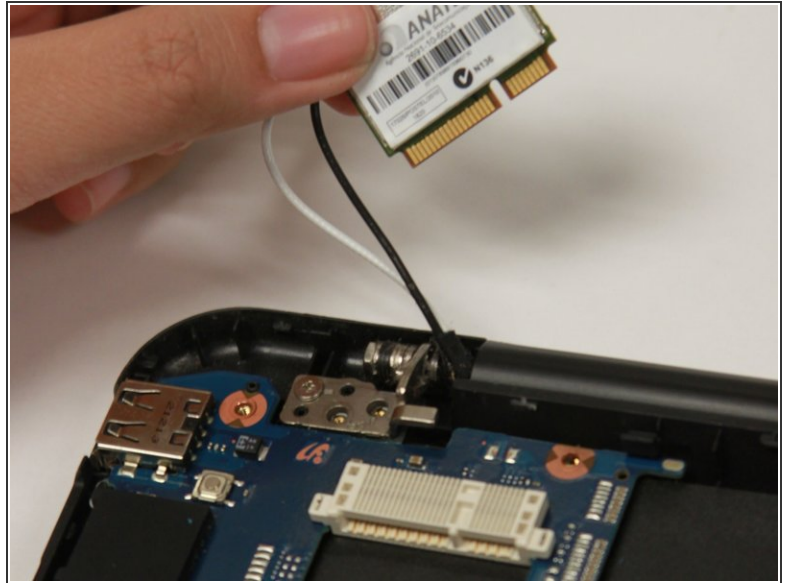
Step 9



- Using a Phillips #00 screwdriver, remove all six 2.5 mm screws .

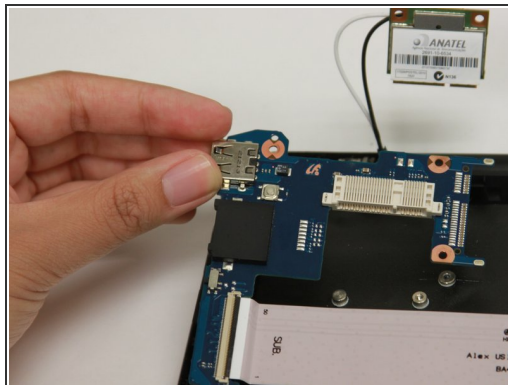
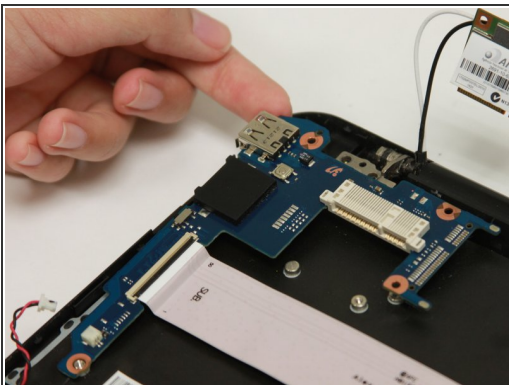
ⓘ Start removing the screws from the wifi card.

Step 10



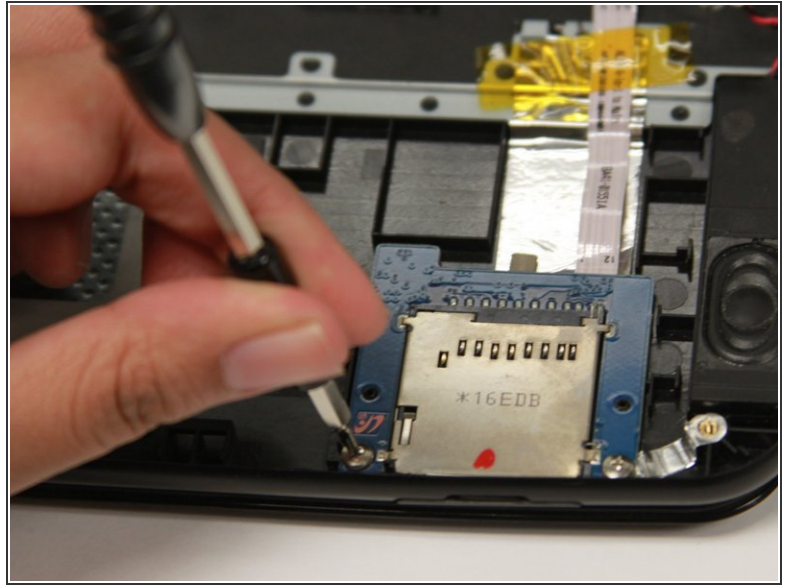
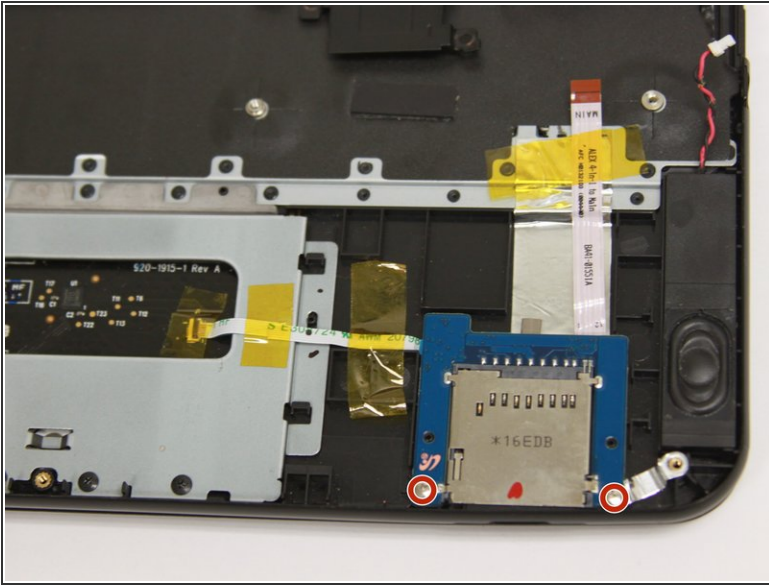
- Gently lift the bottom of the wifi card then pull it towards you to disconnect it from the socket.
- ❗ Our Chromebook does not have a circuit board. Remove all units connected to the circuit board if necessary.

Step 11



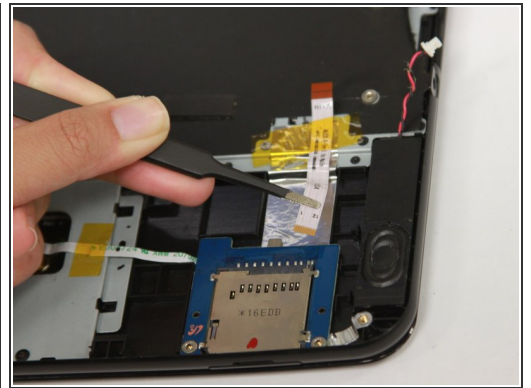
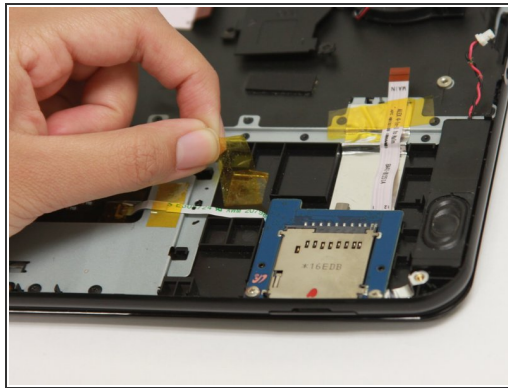
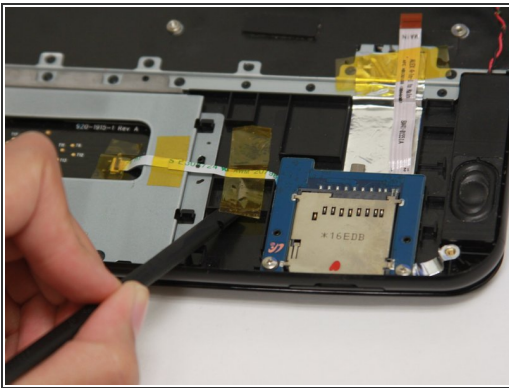
- Gently lift the top left corner of the RAM and pull upward to remove it from the Chromebook.

Step 12 — SD Card Reader



- Remove both 3 mm screws using a Phillips #000 screwdriver.

Step 13



- Remove the yellow tape on the left ribbon cable with a spudger.
- Use a blunt precision tweezer to remove both ribbon cables attached to the SD card reader.

Step 14



- Gently lift the top portion of the SD card reader and pull it away from you to remove it.

☑ To reassemble, first insert the bottom of the SD card reader then carefully push downward.

Step 15 — Keyboard



- Using a blunt precision tweezer, pull the white wire off the wificard.
- Repeat step to remove the black wire to detach the wificard.

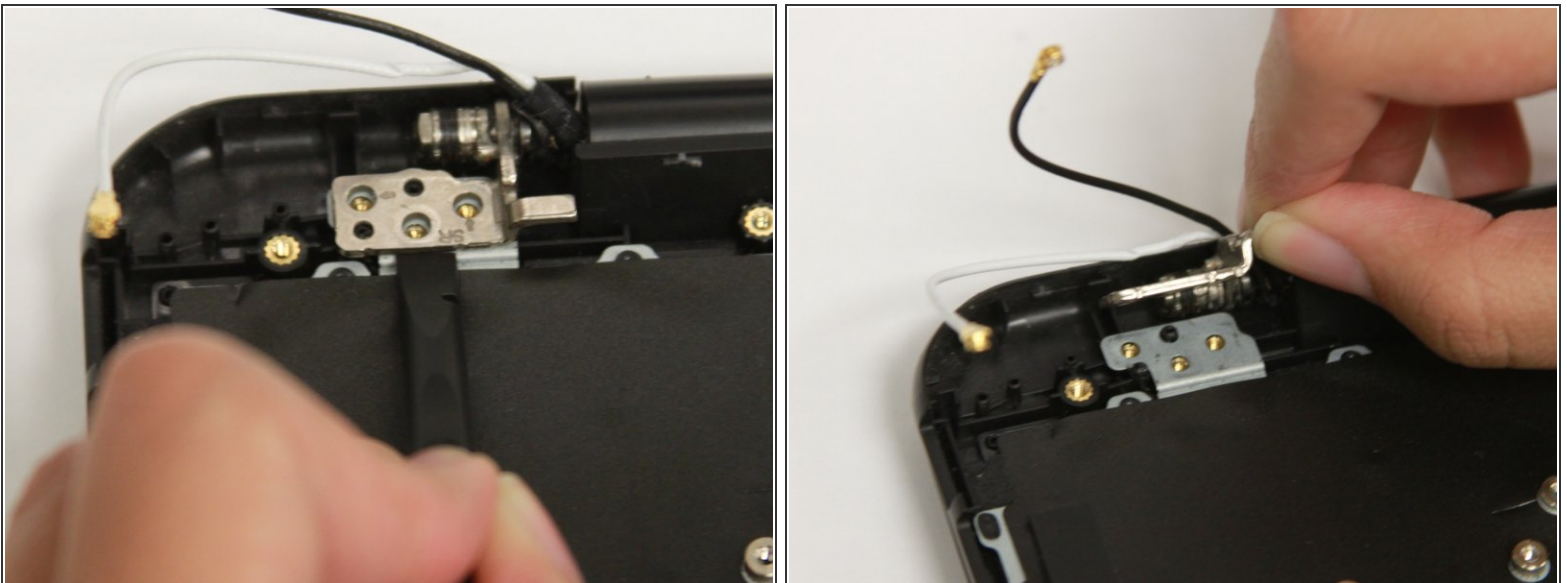
Step 16



- Using the Phillips #00 screwdriver, remove all six 3.5 mm screws to detach the hinges from the keyboard.

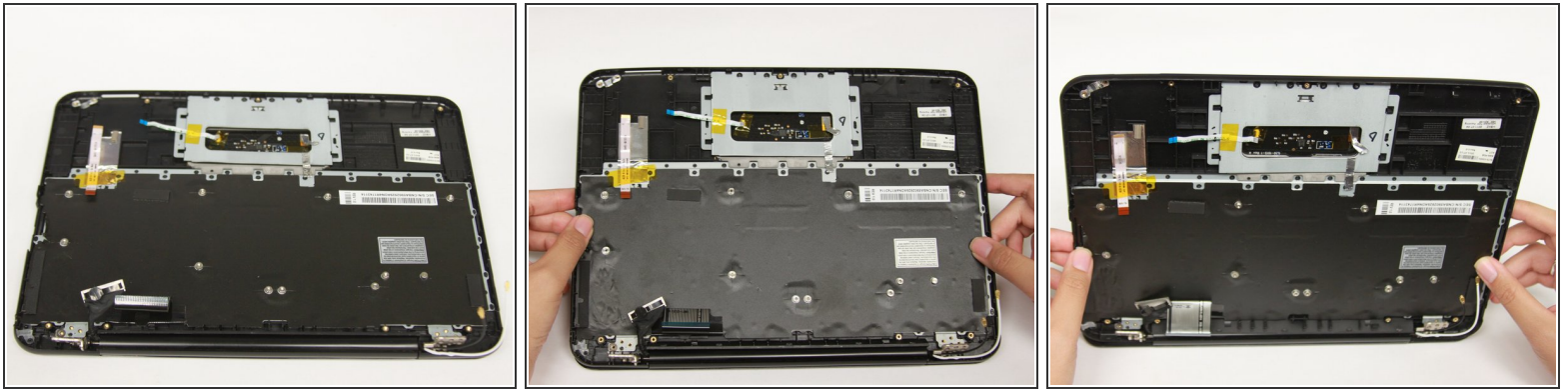
 The Chromebook displayed does not have all six screws.

Step 17



- Using the plastic spudger, place it under the hinge and pry it open.
- Use your hand to lift the hinge.
- Repeat on other side.

Step 18



- Rotate the Chromebook 180 degrees so that the spine and hinges are facing you.
- Lift the keyboard and trackpad upward.

Step 19



- Pull the keyboard and trackpad away from you to detach them from the spine of the Chromebook.

To reassemble your device, follow these instructions in reverse order.