



# Samsung Gear VR Lens Replacement

Replacing the lenses on the Samsung Gear VR SM-R323.

Written By: Abraham Rodriguez



## INTRODUCTION

It is possible for the headset's lenses to become scratched, chipped, or simply dirty. The following guide will outline how to access the lenses for replacement or cleaning.

The motherboard partially sits on the inner mask piece of the headset and must be removed in order to remove the inner mask piece.

Caution is required while working on the headset as a wire harness connects the USB adapter to the motherboard. Care should be taken not to put any strain on the wire and to open the headset from right to left.



### TOOLS:

- [iFixit Opening Tools](#) (1)
- [Phillips PH000 Screwdriver](#) (1)
- [Metal Spudger](#) (1)



### PARTS:

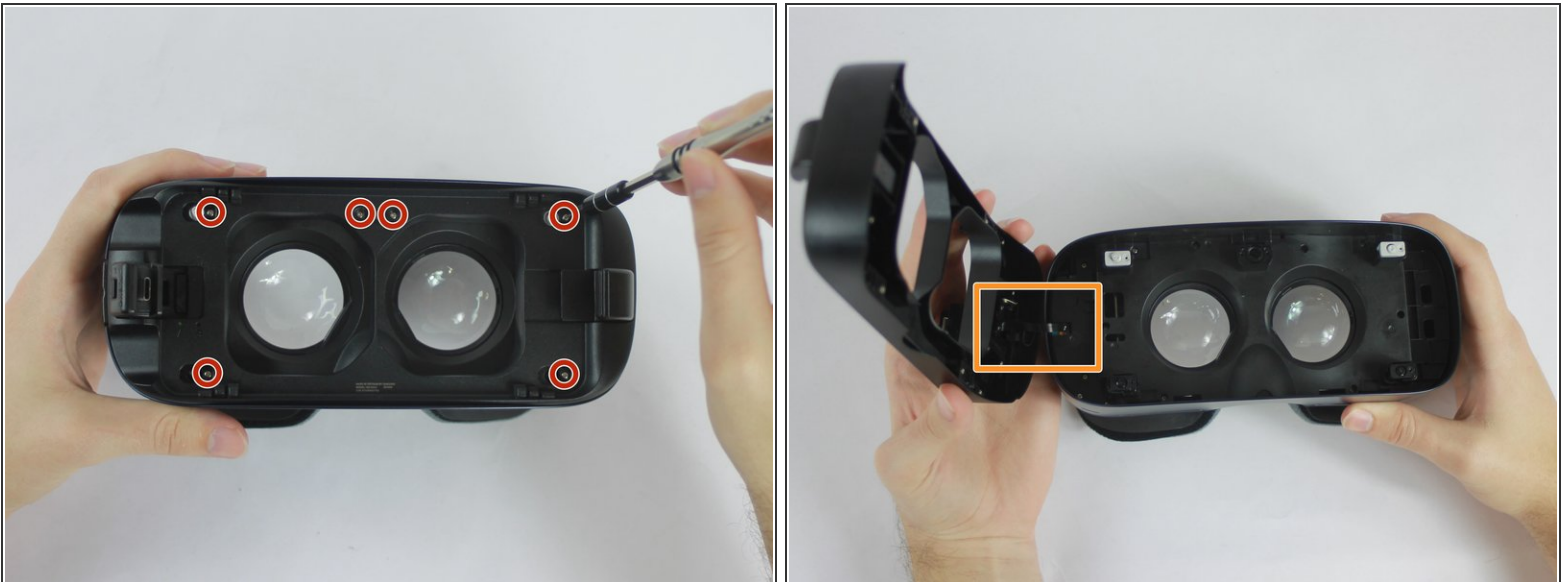
- [Samsung Gear VR lens](#) (1)

## Step 1 — Front Phone Mount



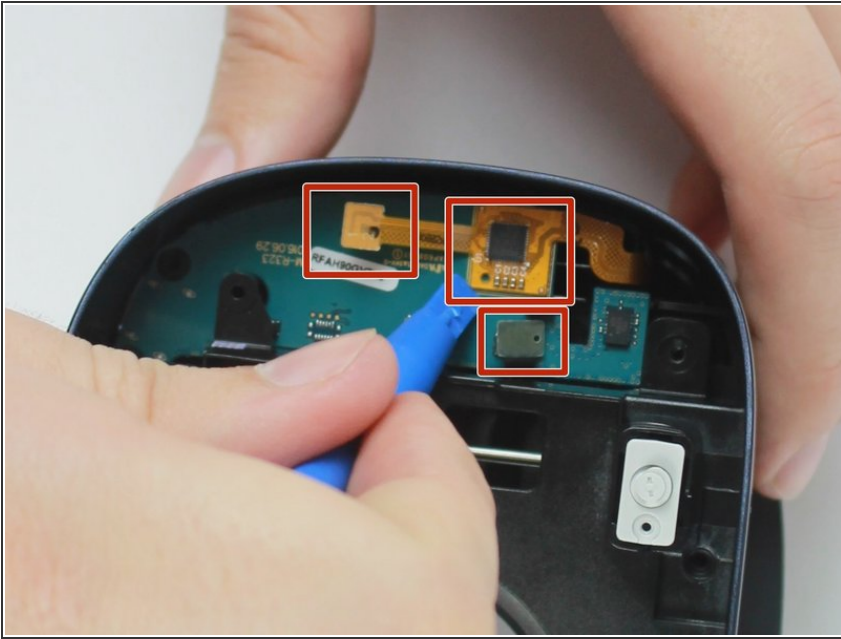
- Remove the front cover to access a plate that holds the phone in place during use.
- Remove the four corner screw covers with a metal spudger to reveal four screws.
- Remove the sticker located at the top center to reveal two additional screws.

## Step 2



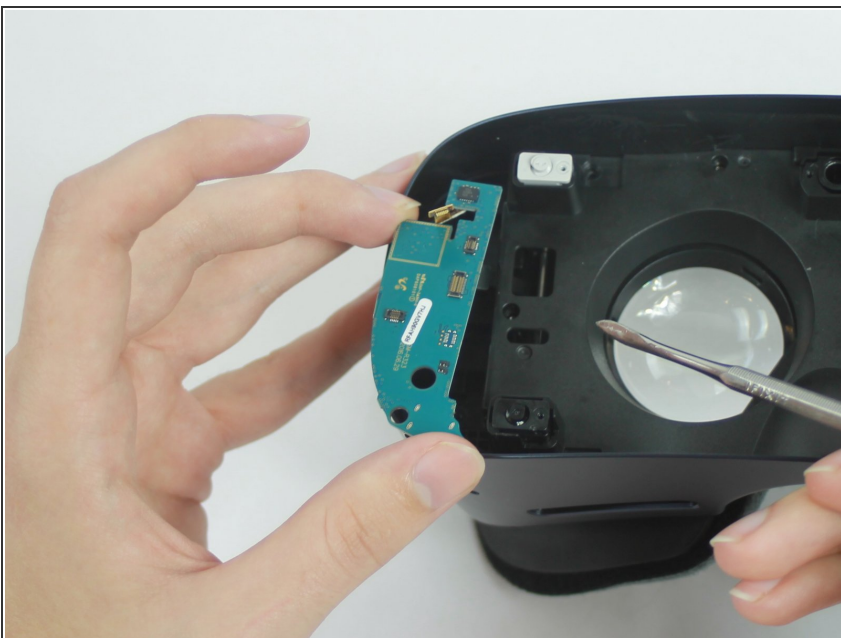
- Using the PH000 tip remove the six 0.5 cm screws that secure the front phone mount.
  - After the six 0.5 cm screws are completely removed lift the front phone mount up and to the left.
- ⚠ When handling your equipment be careful not to strain the wire harness located on the left side of the headset.

## Step 3 — Motherboard



- Use the blue plastic opening tool to remove the rest of the the pop connectors from the motherboard.
- ⓘ The larger gold connector is lightly glued down so it may take more effort to remove than the others.

## Step 4



- You can now remove the motherboard from the mask.
- ⚠ Make sure that nothing is connected to the motherboard before you try to remove it as pulling it with something connect might brake the connections.

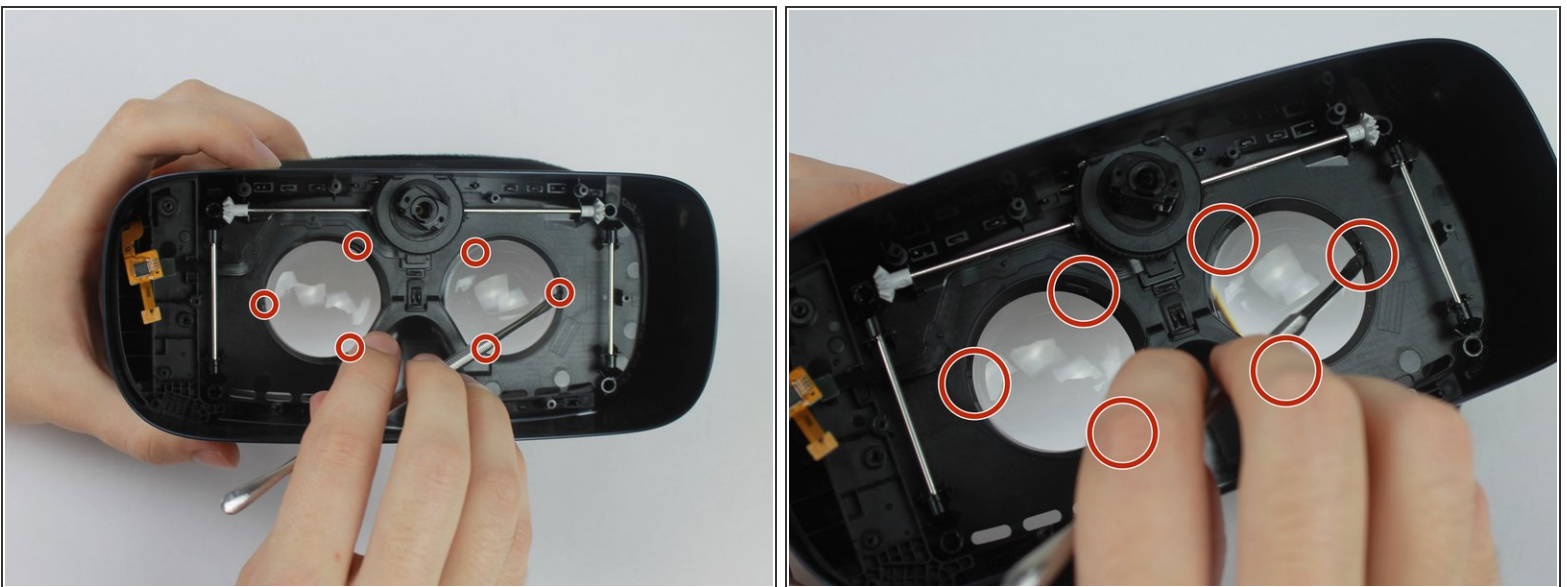


## Step 5 — Inner Mask



- Using the PH000 tip remove the eight 0.5 cm screws from the Inner Mask
- Carefully remove the Inner Mask by pulling it from the inner side of the lenses socket.

## Step 6 — Lens



- Using the metal spudger, push in the 3 tabs around the lens housing to release the lens. Repeat for both lens for a total of 6 tabs.

⚠ Do not push in too hard or you might brake the tabs.

## Step 7



- Flip the headgear and use your fingers to gently remove lens from mask. Repeat for both lens.

To reassemble your device, follow these instructions in reverse order.