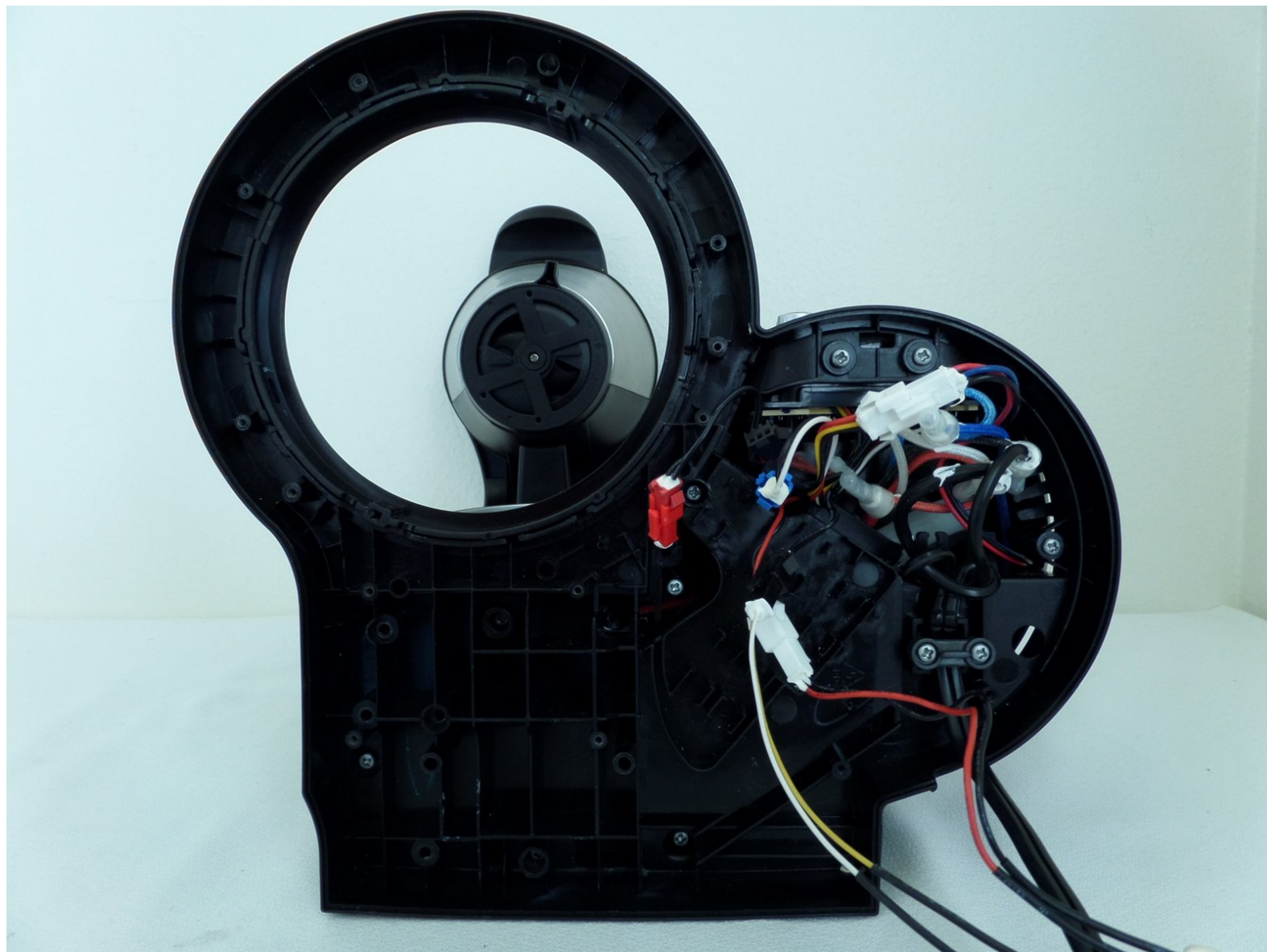




# Ninja Coffee Bar CF080 Power Module Replacement

Use this guide to replace the power module in your Ninja Coffee Bar CF080.

Written By: Elizabeth Nguyen



---

## INTRODUCTION

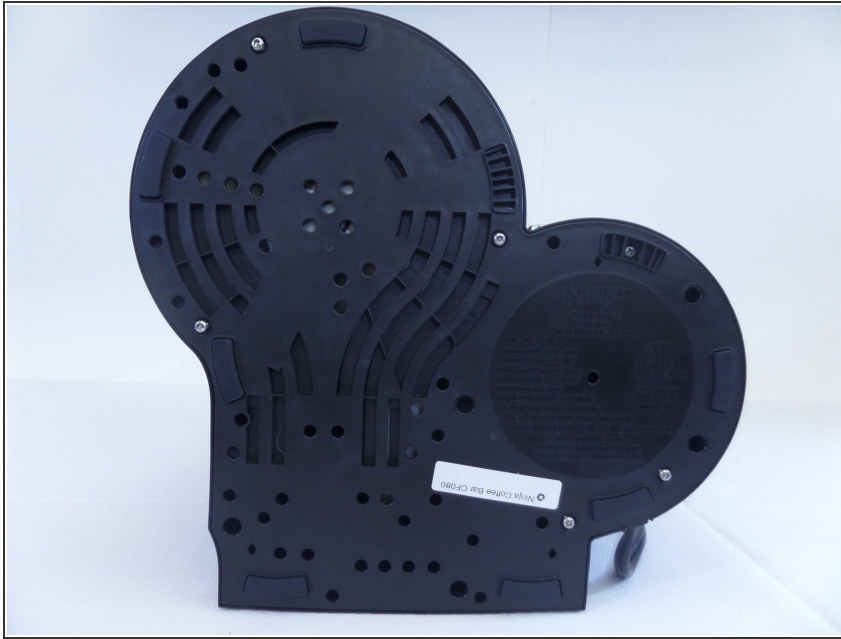
This guide will show how to remove the power module from the coffee machine.



### TOOLS:

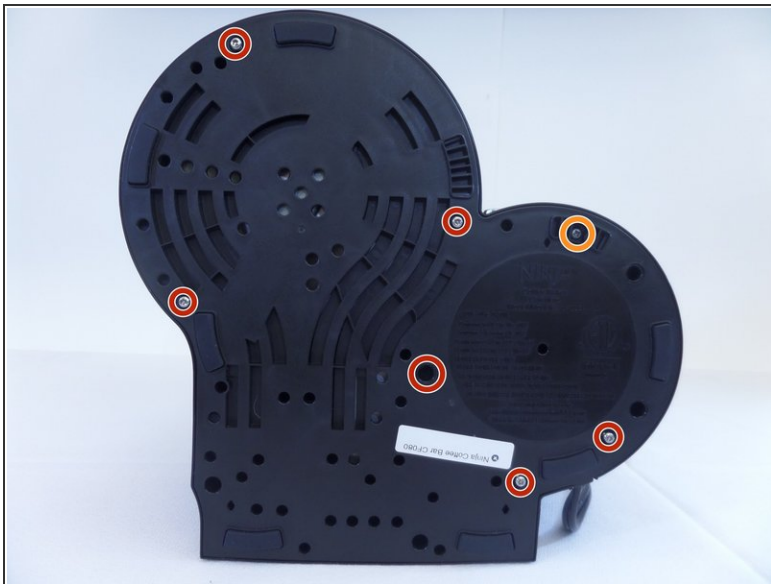
- [Phillips #1 Screwdriver](#) (1)
  - [Phillips #2 Screwdriver](#) (1)
-

## Step 1 — Heated Plate



- Face the machine bottom towards you.

## Step 2



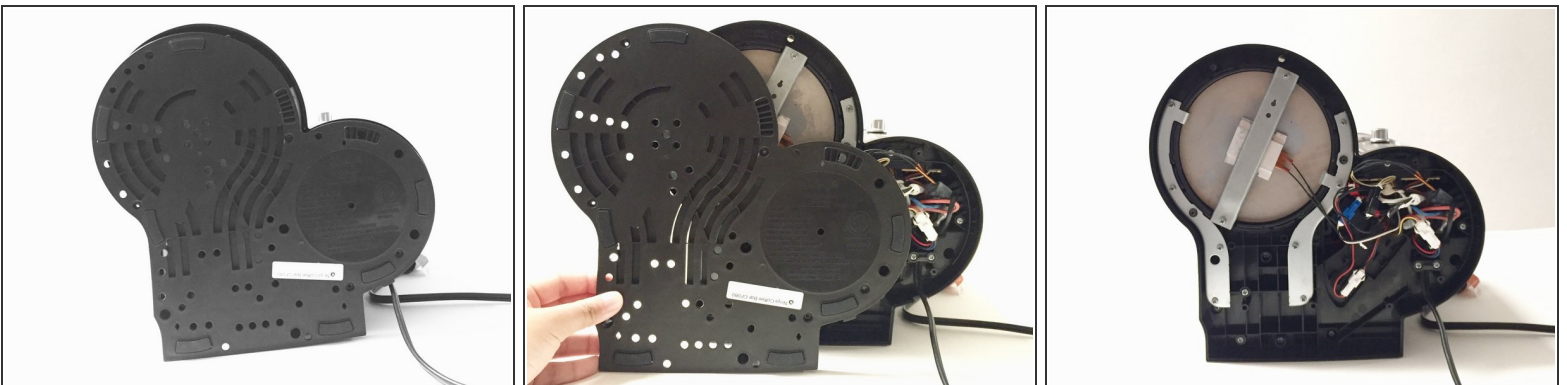
- Unscrew six 0.6cm screws by holding the bottom board with Torx #10 screwdriver to remove the board.
- Unscrew one 0.6 cm screw with PH1 screwdriver to remove the board.

### Step 3



- With moderate force remove and place the "plastic opening tool" between the divide in order to remove the bottom board.

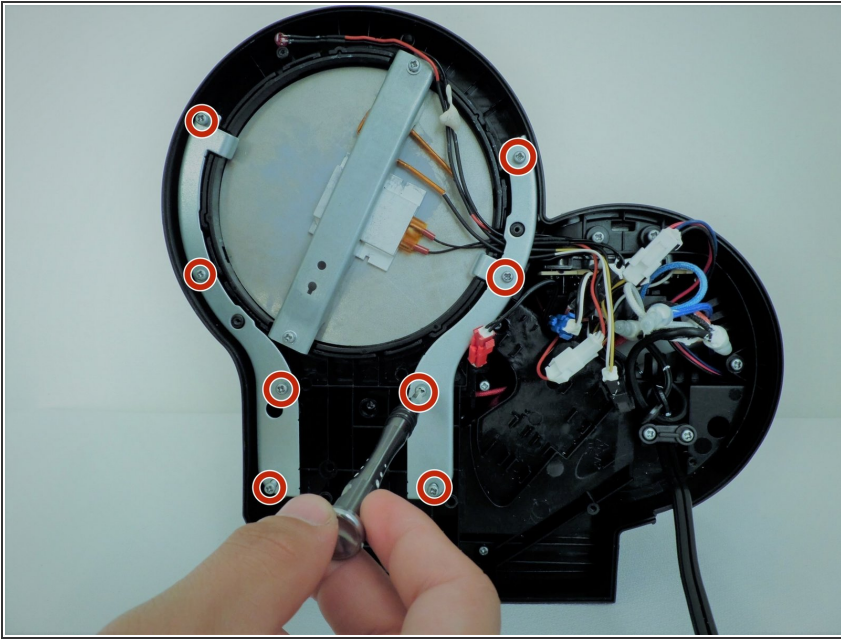
### Step 4



- Remove the bottom board with moderate force.

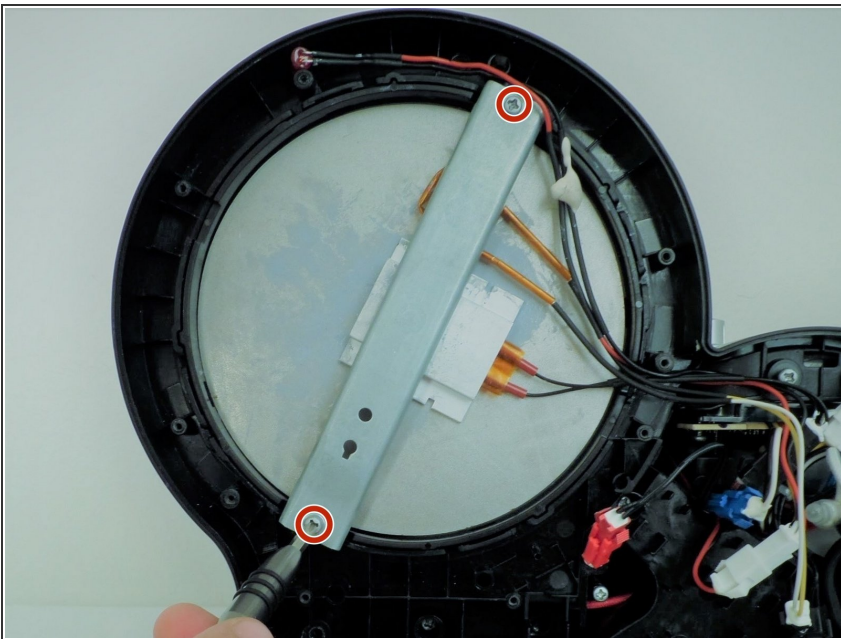


## Step 5



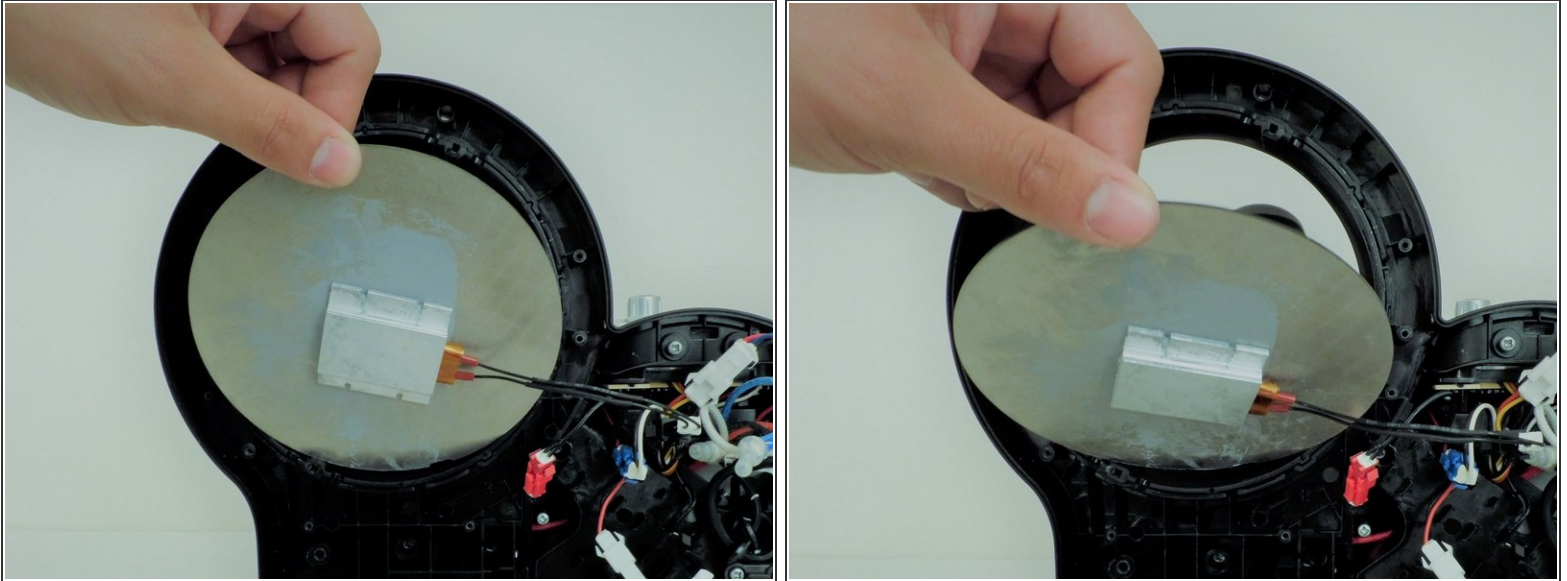
- Unscrew eight 0.6cm sized screws with Phillips #1 screwdriver, holding the silver secures on the sides of the heated plate.
- ⓘ Four screws on each side, two silver secures to remove the securers, located on the silver bar holding the heated plate (one on each end).

## Step 6



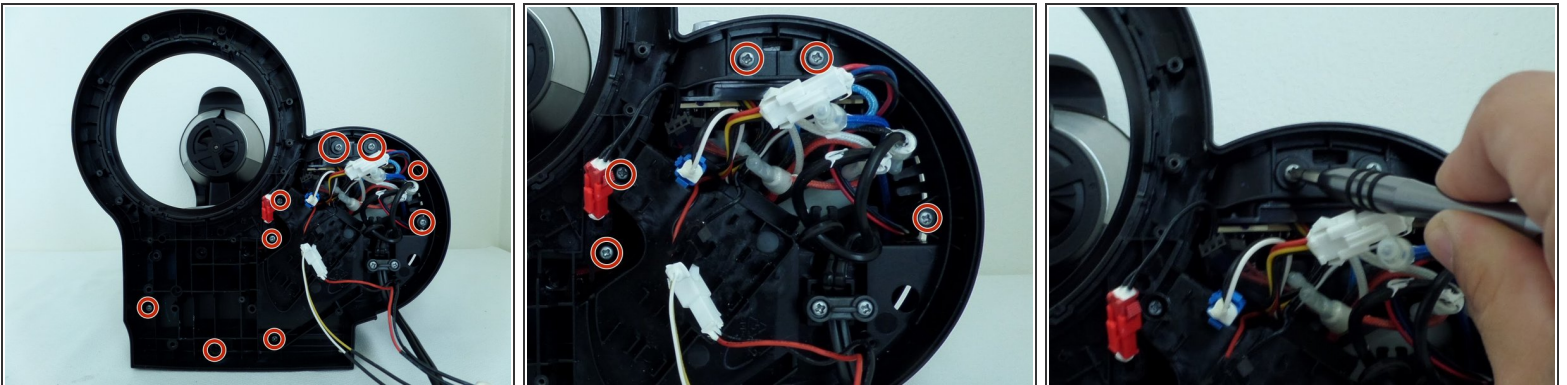
- Unscrew two 0.6cm sized screws with Phillips #1 screwdriver.
- ⓘ The silver bar will fall off once screws are removed.

## Step 7



- Remove the heated plate from the machine with easy glide.

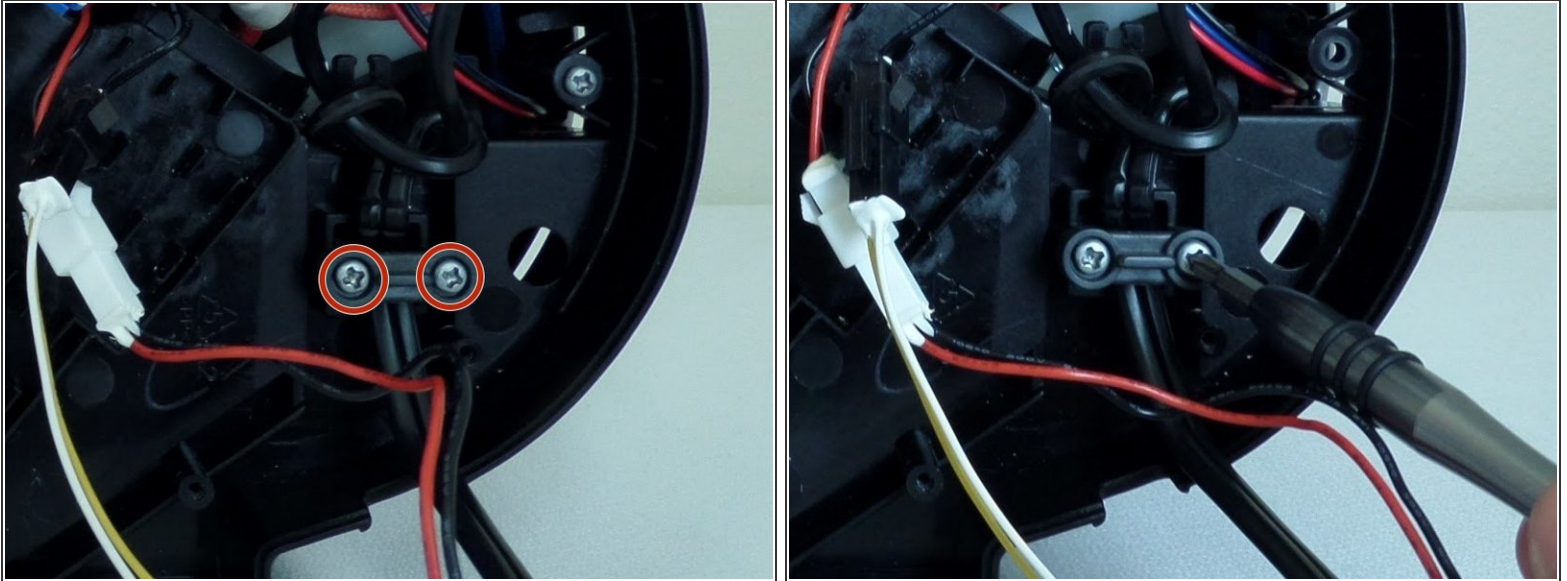
## Step 8 — Power Module



- Remove the nine 0.5cm screws with Phillips #2 screwdriver.
- ⓘ Some screws are harder to see due to how deep the holes are.
- ✦ Recommend using Extender 4 with Phillips #2 screwdriver to help unscrew the screws within the deep holes of the machine.

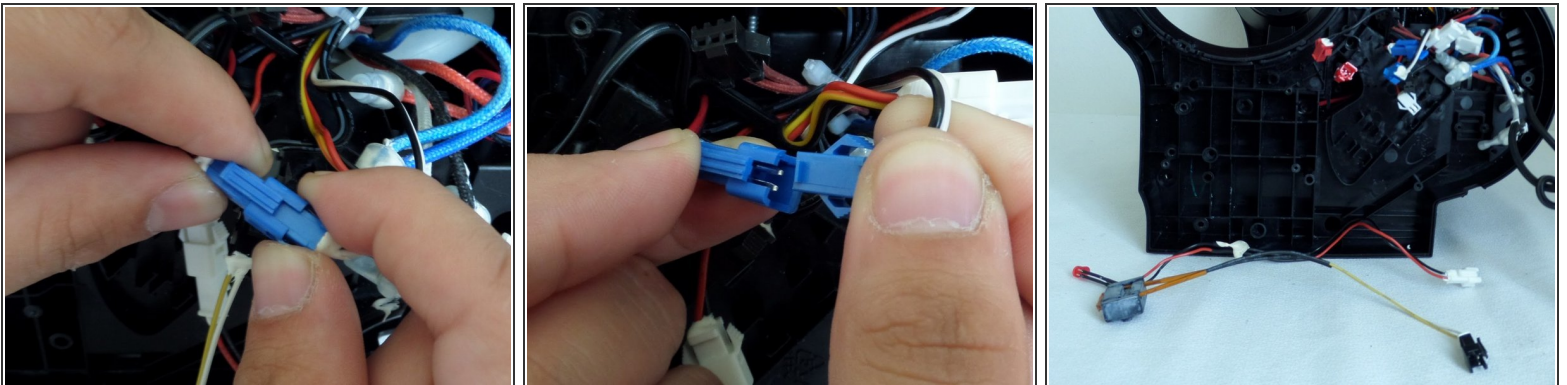


## Step 9




- Remove the two 0.6cm with Phillips #2 screwdriver.

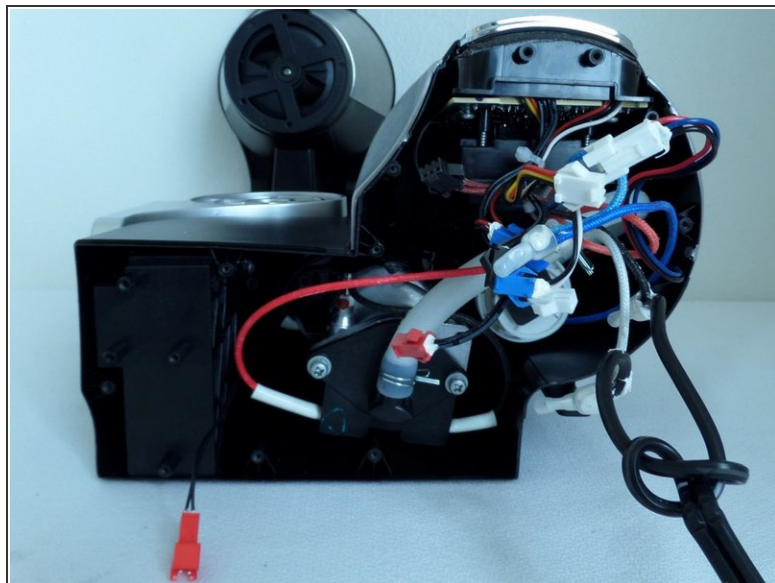
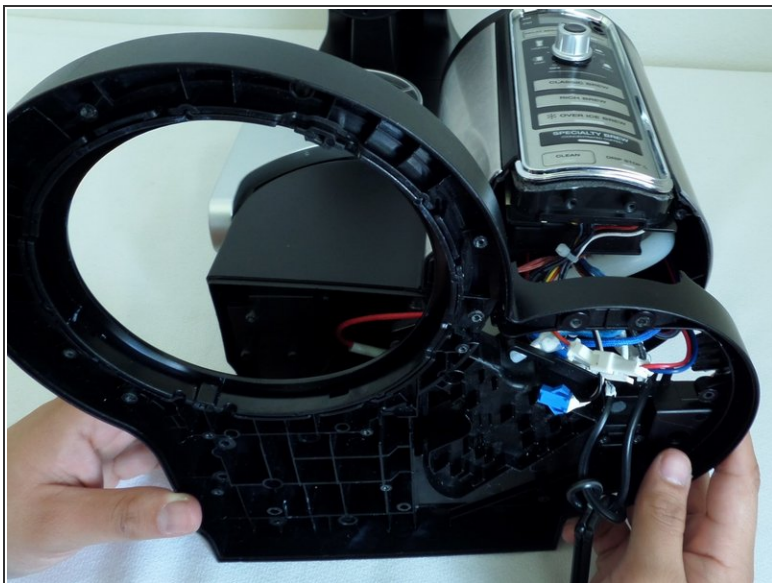
## Step 10



- Detach various colored cords from one another, using both hands to place thumb and index finger to hold each grip then separate by pulling with the degree of force.

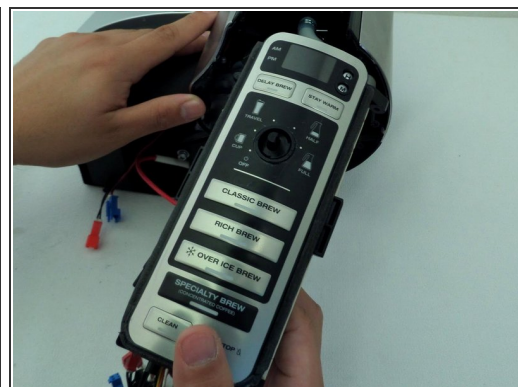
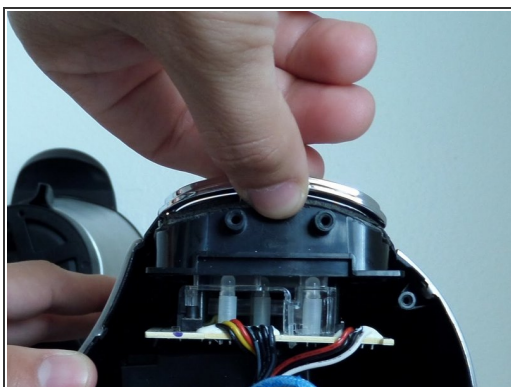
 There will be 1 blue, 1 black, 1 red and 2 white.

## Step 11



- Remove the black board by maneuvering it through the cords.

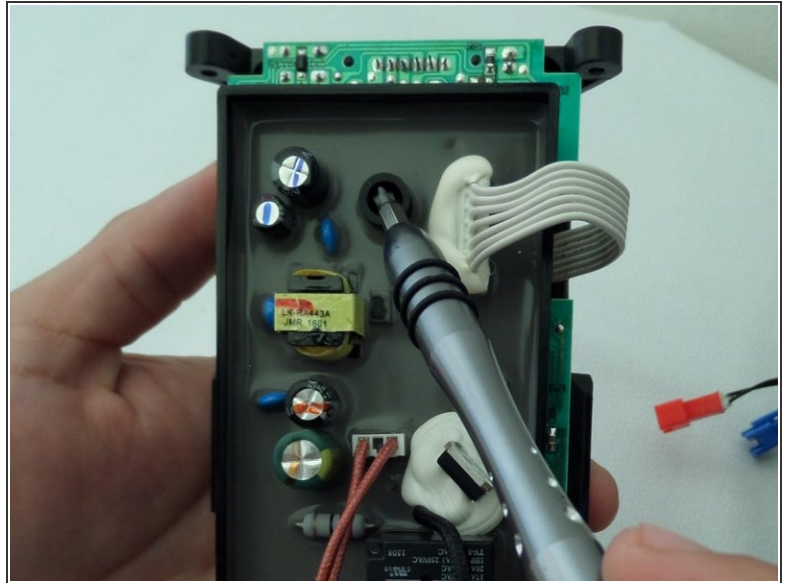
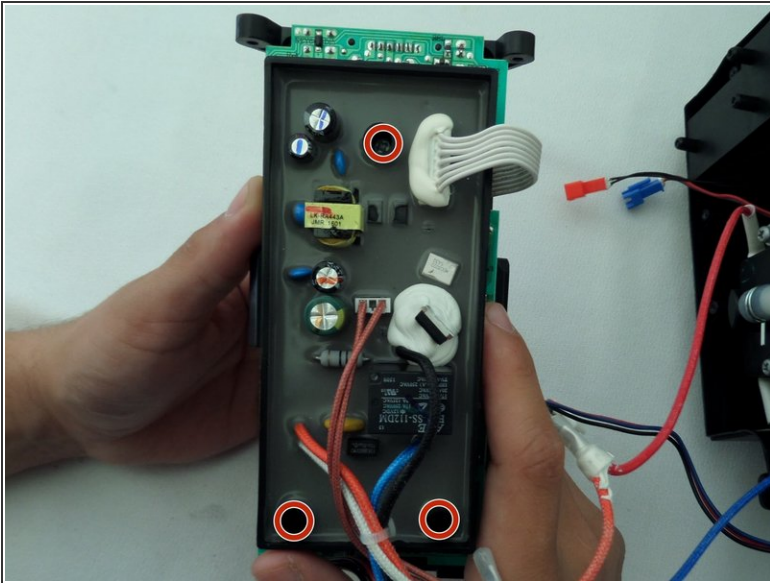
## Step 12



- Grip the bottom end of the panel and pull it towards you to remove the module from the machine.

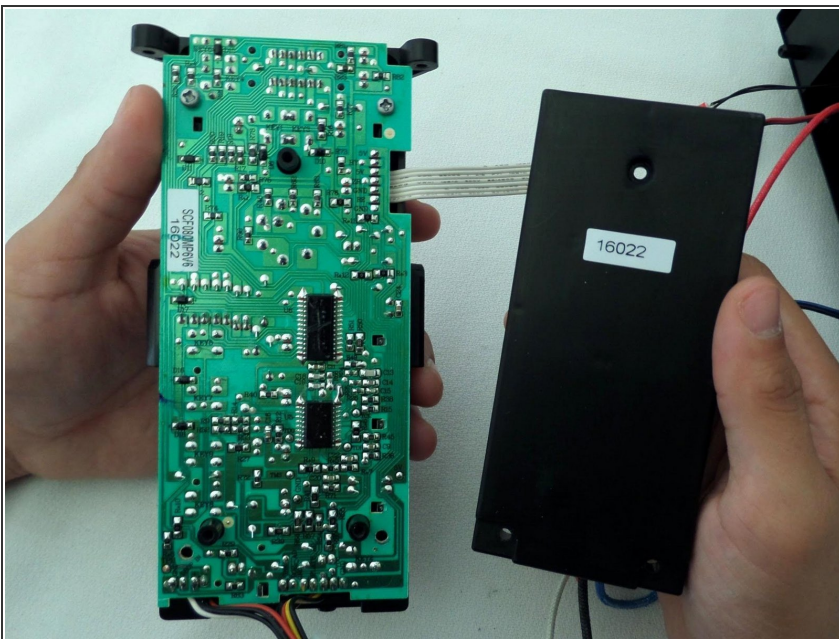


## Step 13



- Remove the three 0.6cm screws with Phillips #1 screwdriver.
- ⓘ They are in the black holes, 1 at the top and two at the bottom.

## Step 14



- Remove the black board attached to the module.

To reassemble your device, follow these instructions in reverse order.