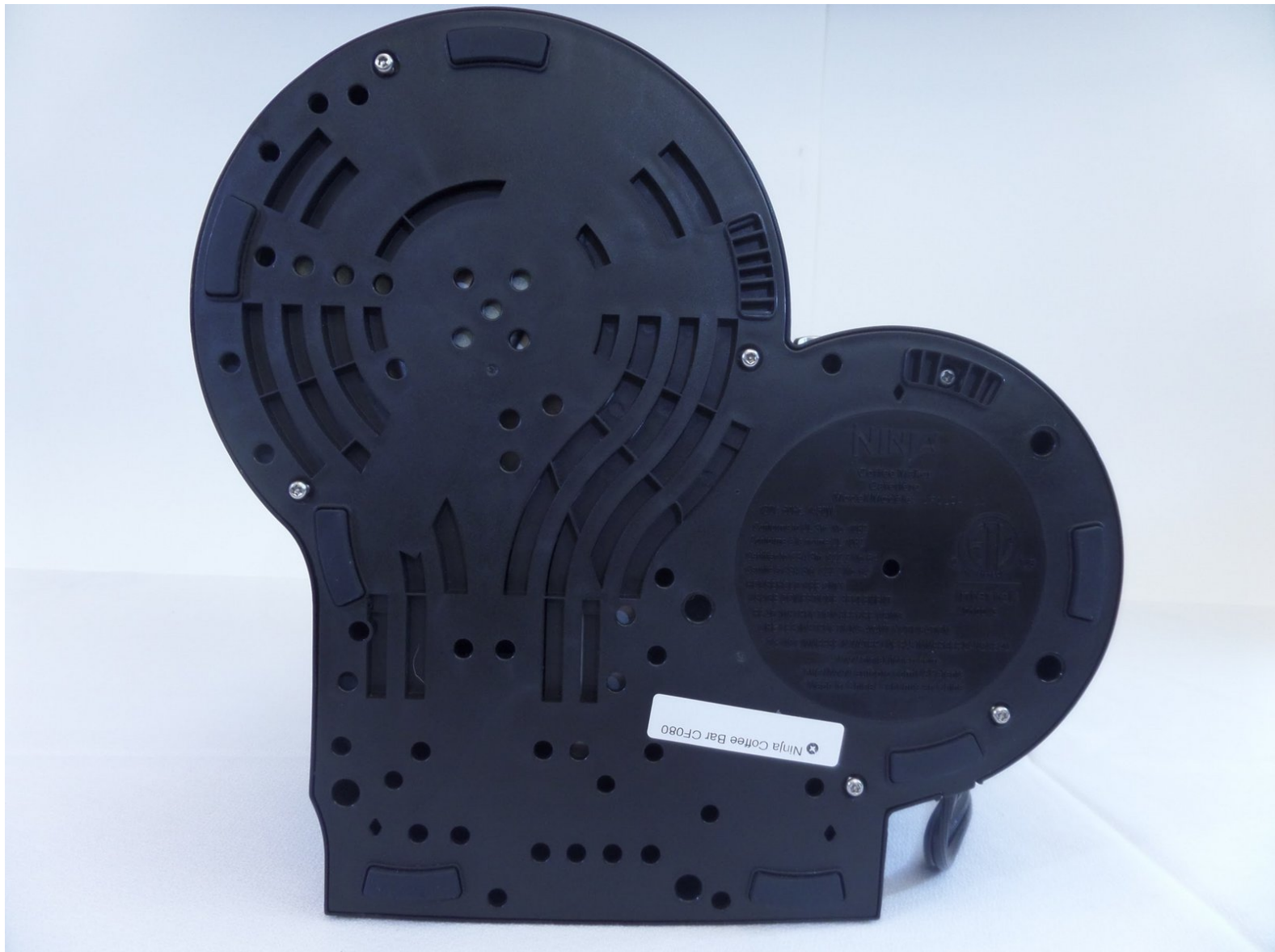




Ninja Coffee Bar CF080 Heated Plate Replacement

Use this guide to replace heated plate in your Ninja Coffee Bar CF080.

Written By: Elizabeth Nguyen



INTRODUCTION

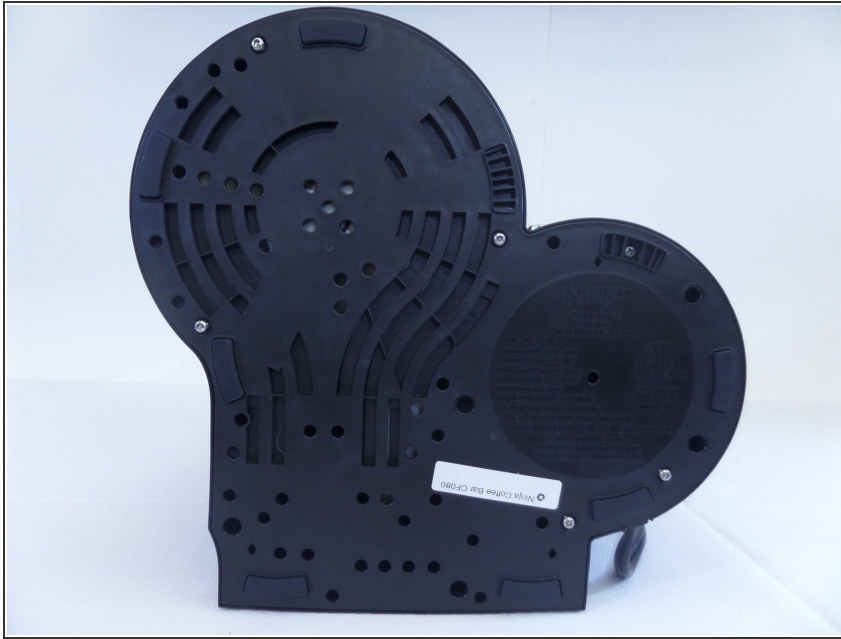
This guide will show how to remove the heated plate from the coffee machine.



TOOLS:

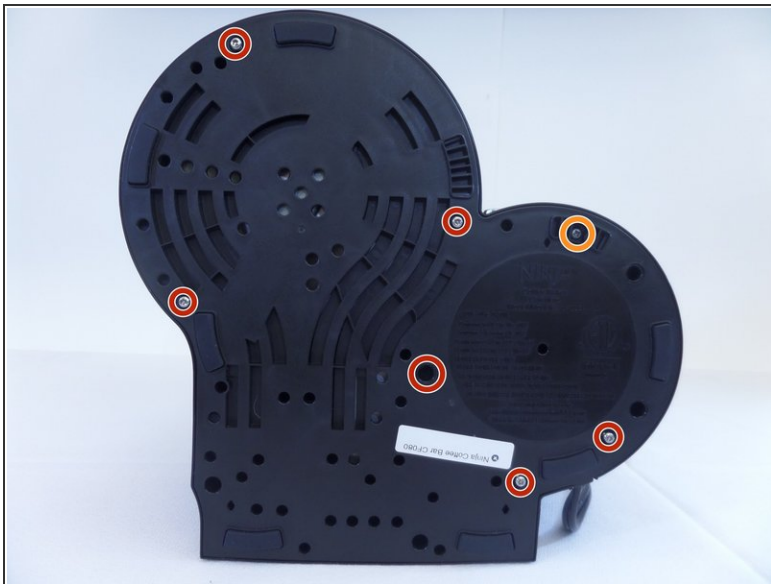
- [T10 Torx Screwdriver](#) (1)
 - [Phillips #1 Screwdriver](#) (1)
 - [iFixit Opening Tools](#) (1)
-

Step 1 — Heated Plate



- Face the machine bottom towards you.

Step 2



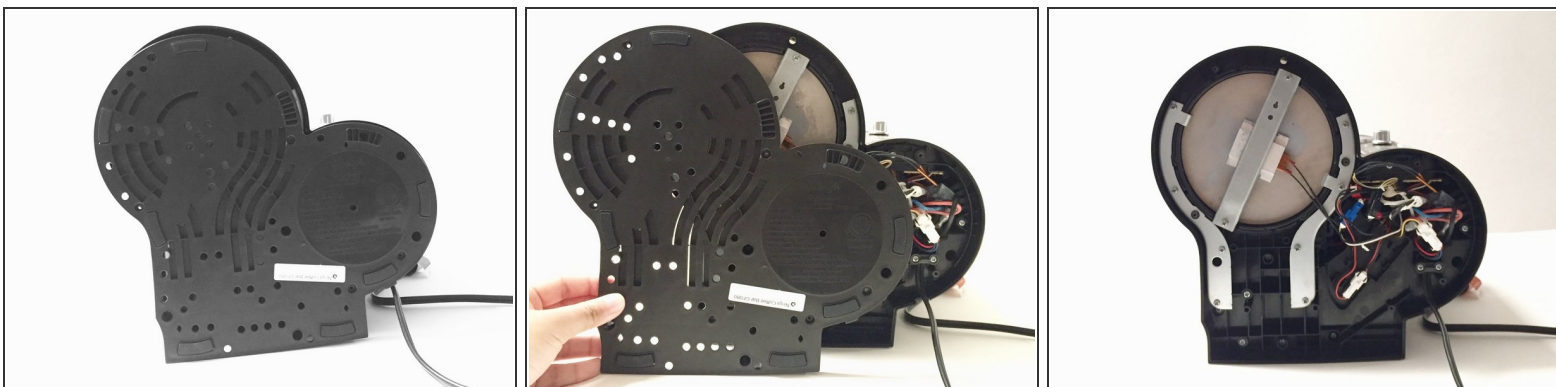
- Unscrew six 0.6cm screws by holding the bottom board with Torx #10 screwdriver to remove the board.
- Unscrew one 0.6 cm screw with PH1 screwdriver to remove the board.

Step 3



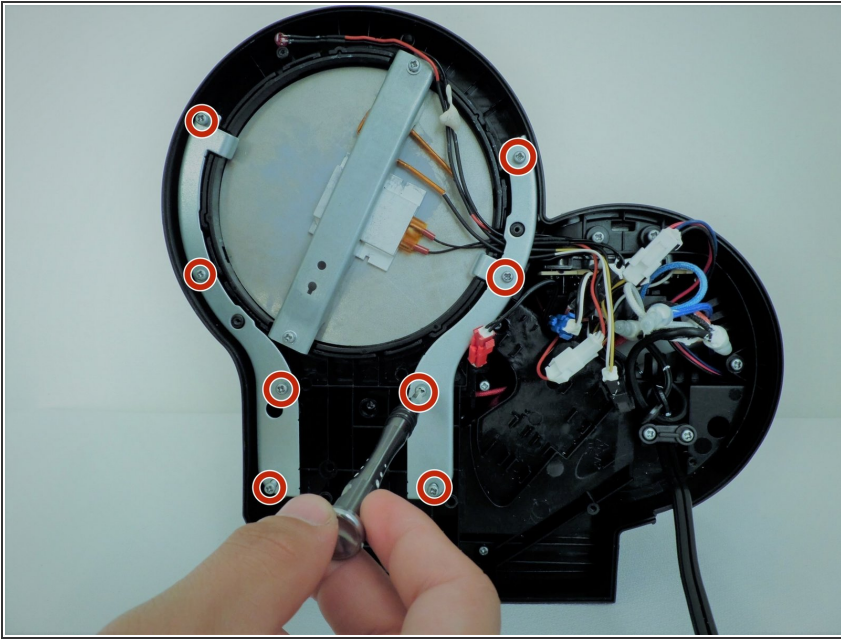
- With moderate force remove and place the "plastic opening tool" between the divide in order to remove the bottom board.

Step 4



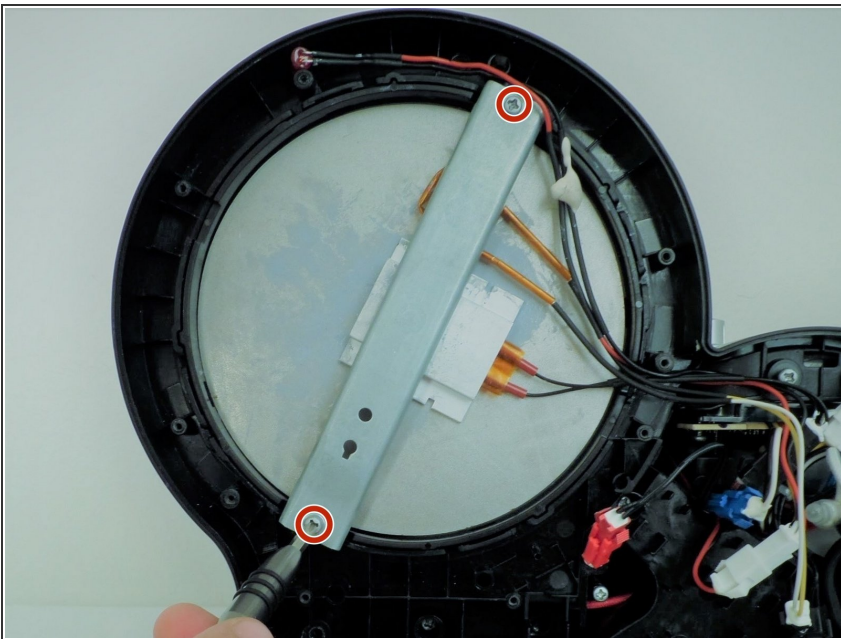
- Remove the bottom board with moderate force.

Step 5



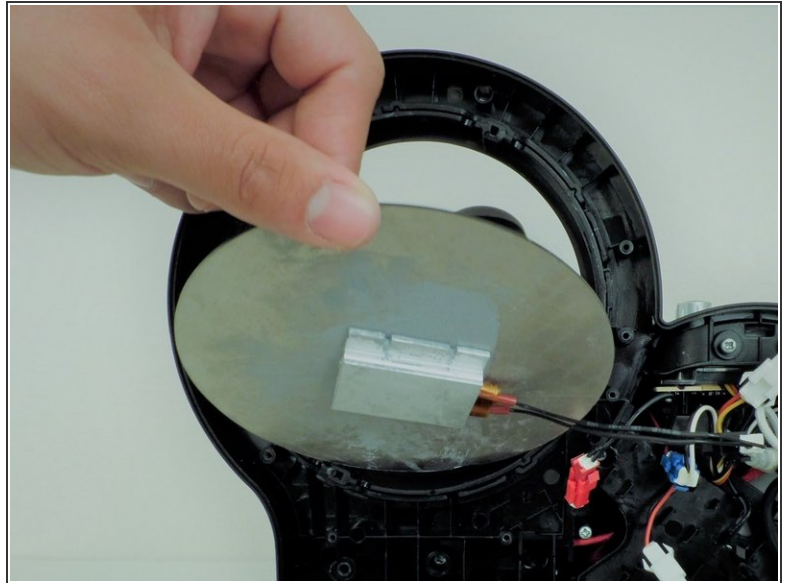
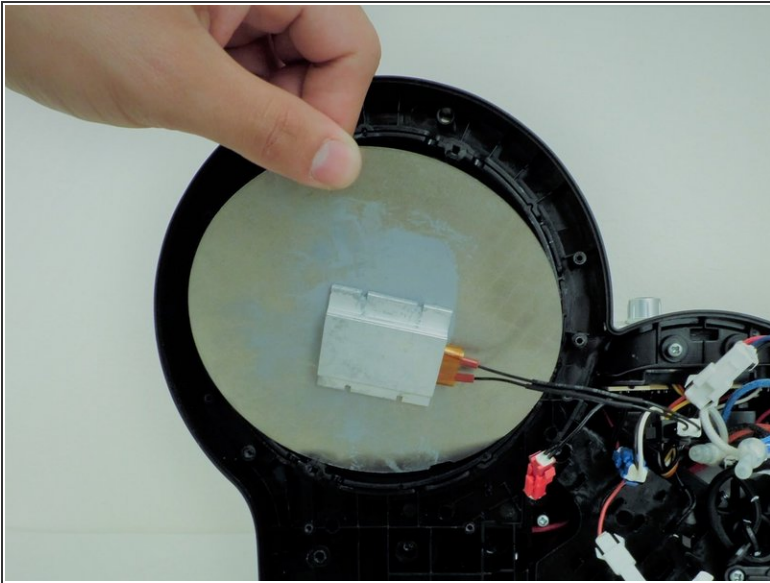
- Unscrew eight 0.6cm sized screws with Phillips #1 screwdriver, holding the silver secures on the sides of the heated plate.
- ⓘ Four screws on each side, two silver secures to remove the securers, located on the silver bar holding the heated plate (one on each end).

Step 6



- Unscrew two 0.6cm sized screws with Phillips #1 screwdriver.
- ⓘ The silver bar will fall off once screws are removed.

Step 7



- Remove the heated plate from the machine with easy glide.

To reassemble your device, follow these instructions in reverse order.