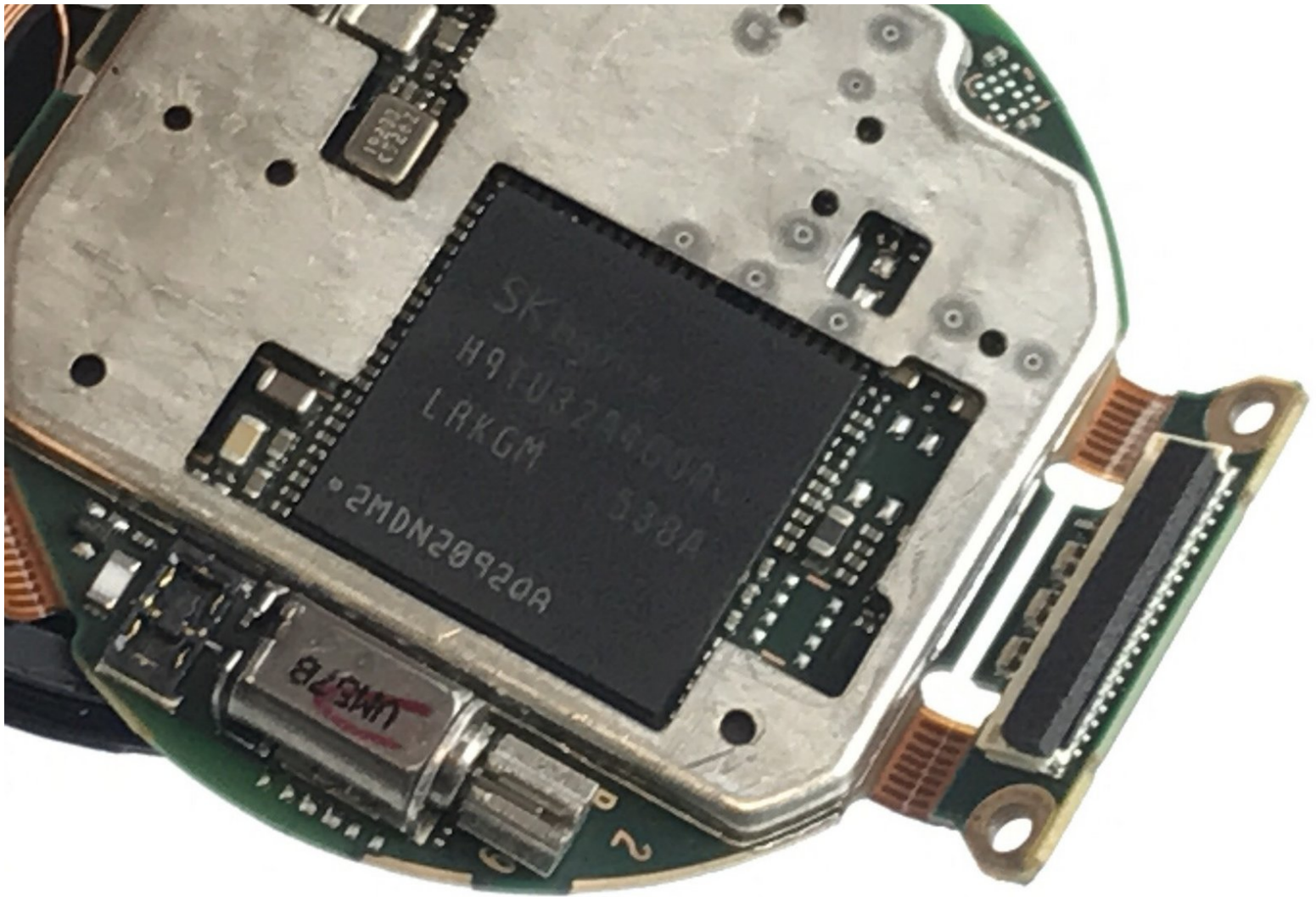




# Motorola Moto 360 2nd Gen Vibration Motor Replacement

This guide will instruct the user to replace the Vibration Motor in their Motorola Moto 360 2nd Gen device.

Written By: kushyal Budhan



## INTRODUCTION

Take care when handling the Moto 360 because it is very fragile. Also, take extreme caution when using tools. Use this guide to replace the vibration motor in your device.



### TOOLS:

- [Pin Spanner Set](#) (1)
- [iOpener](#) (1)
- [Jimmy](#) (1)
- [Spudger](#) (1)
- [iFixit Opening Tools](#) (1)
- [Tweezers](#) (1)



### PARTS:

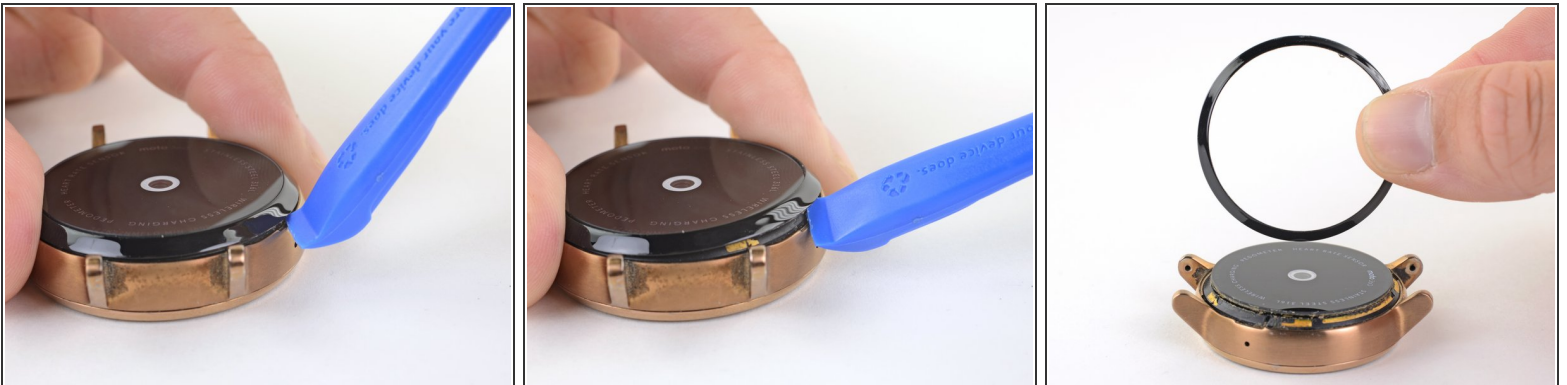
- [Vibrator Motor](#) (1)

## Step 1 — Remove the watch band



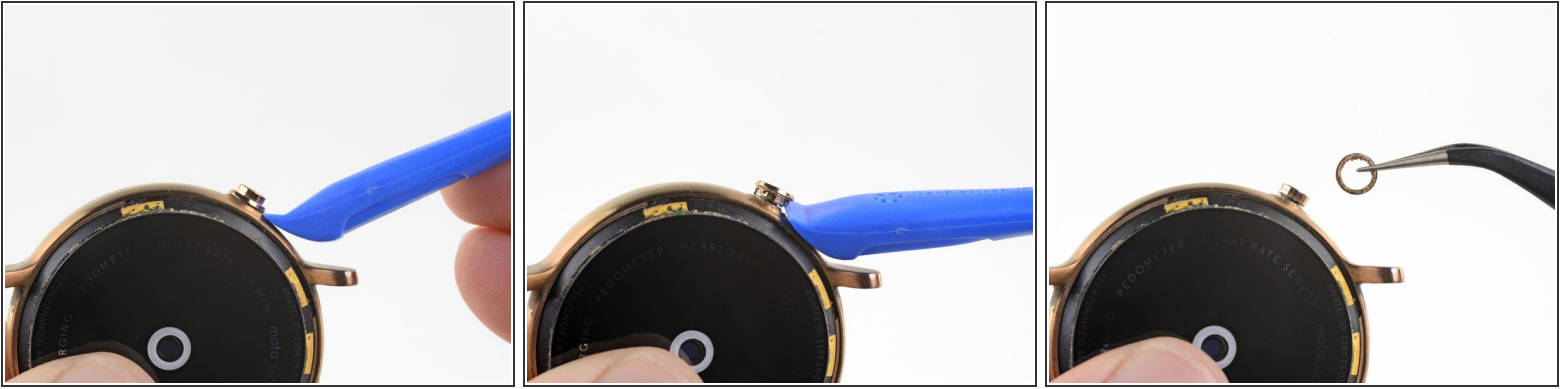
- Use your finger or the tip of a spudger to compress the pin securing the watch band.
- With the pin compressed, remove the watch band.

## Step 2 — Remove the trim ring



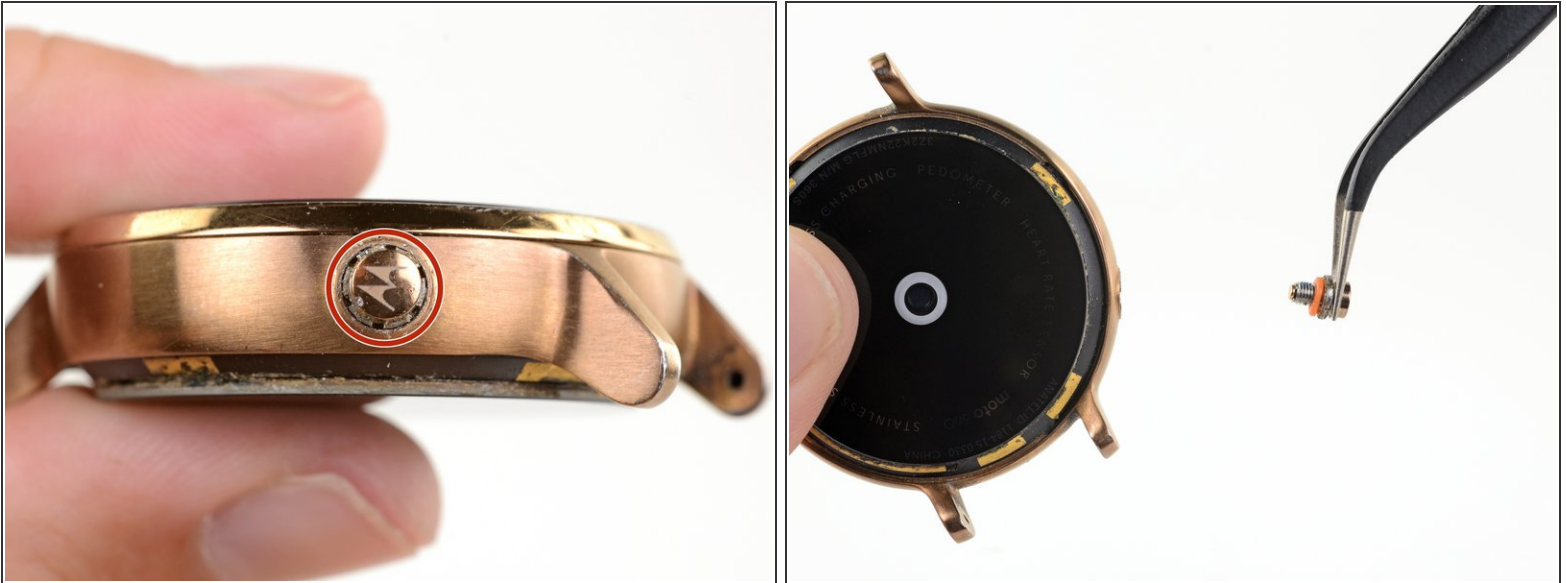
- Insert an opening tool to into the small notch next to the microphone hole.
- Slide the opening tool around the perimeter of the trim ring while prying up slightly to slice through the adhesive securing the ring to the watch.
- ⓘ If the trim ring does not readily separate from the watch, heat it with an iOpener or hair dryer to soften the adhesive.
- Remove the trim ring.

### Step 3 — Remove the button trim



- Use an opening tool to slowly pry the button trim ring straight up.
  - ❗ If you bend or rotate the trim ring while removing it, you may damage the small pins that secure it.
- Remove the trim ring.

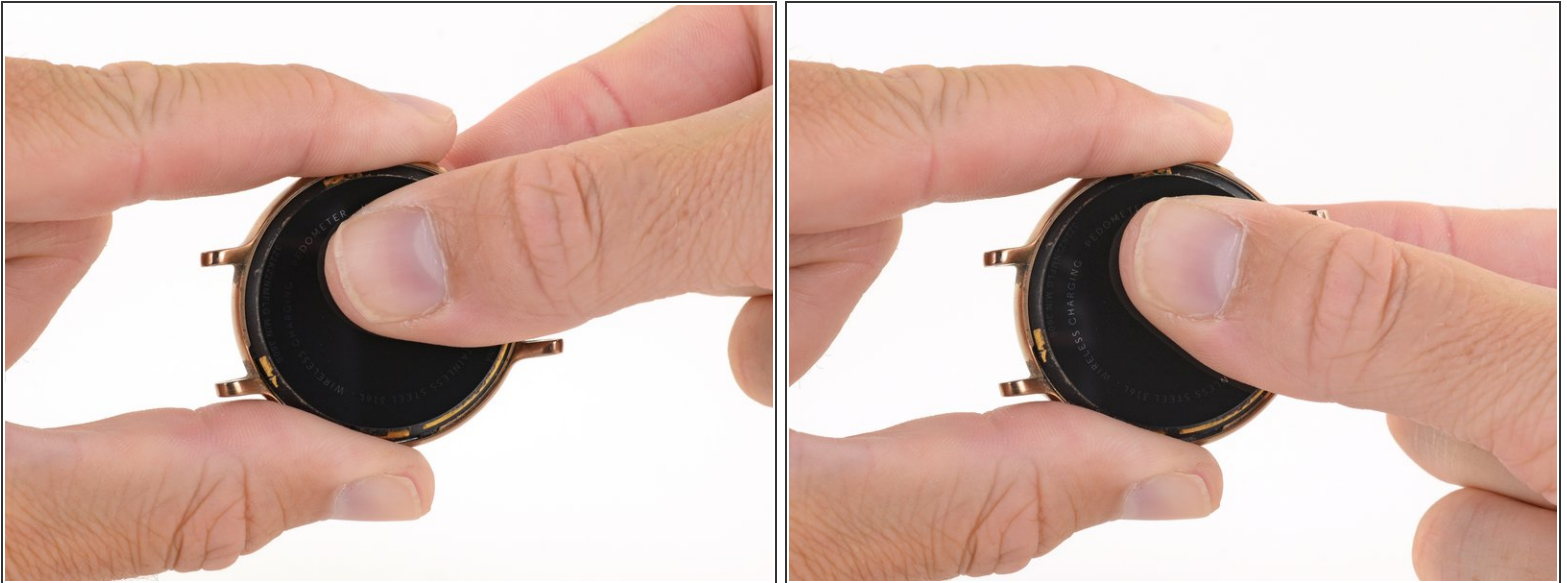
## Step 4 — Remove the button



- Use a small pin spanner to unscrew the button.
  - ⓘ If you don't have access to the proper spanner, you can use a pair of tweezers, a very small screwdriver, or a paperclip to unscrew the button assembly. Insert your chosen tool into one of the grooves around the button and push sideways.
  - ⓘ There is blue thread locker on these threads, so light heat on the button may help to soften the thread locker.
- Remove the button.
  - ⓘ There is a small red o-ring that may fall off the button threads when the button is removed. Make sure not to lose the o-ring.



## Step 5 — Remove the inner assembly



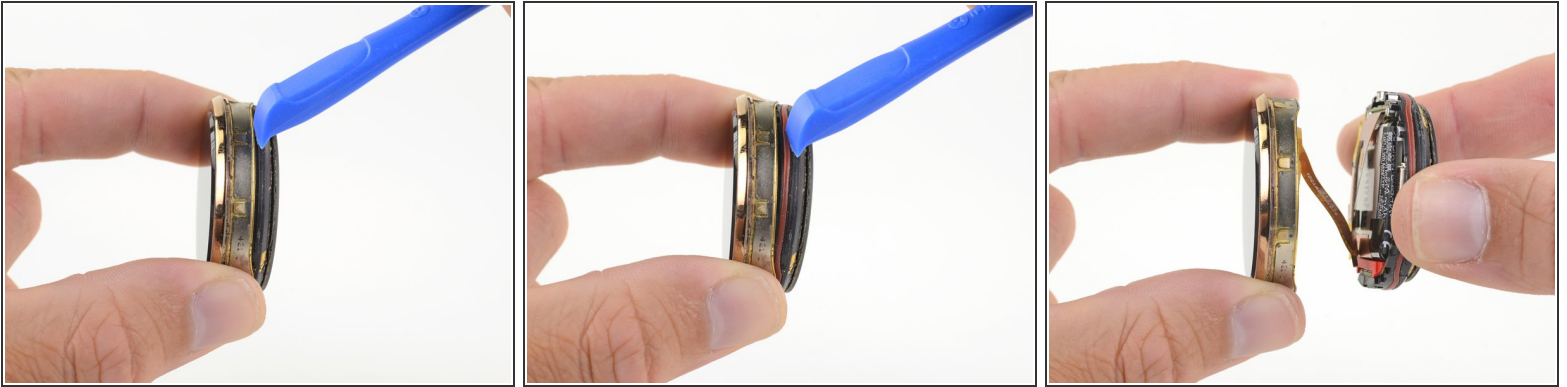
- While holding the outer case steady, twist the inner watch assembly clockwise until it stops.

## Step 6



- Hold the outer watch case steady and push against the bottom of the inner assembly to remove the inner assembly from the frame.
- ❗ It should not take much force to push the inner assembly out of the watch frame. If it seems stuck, make sure that you've rotated the inner assembly far enough to release it from the frame.

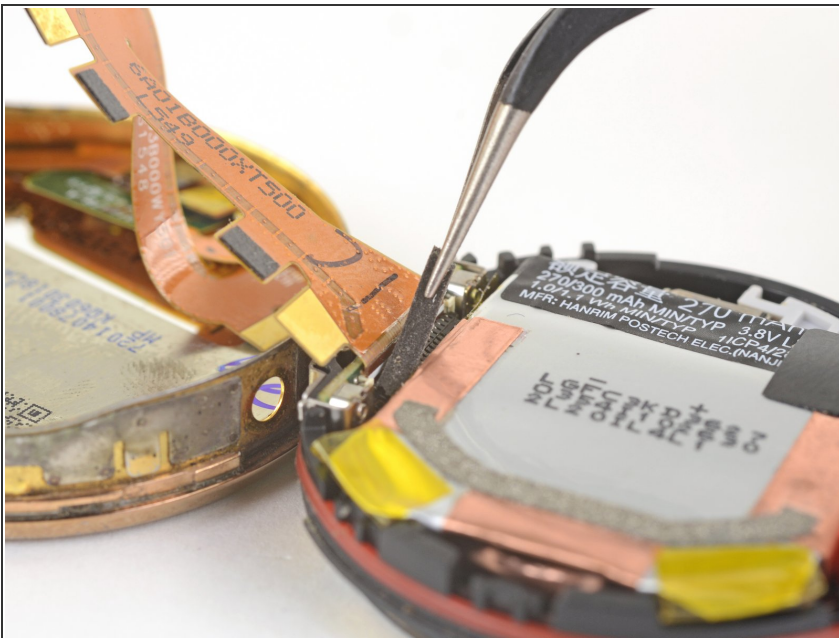
## Step 7 — Open the inner assembly



- Use a fingernail or opening tool to pry the plastic lower assembly away from the display assembly.

⚠ Do not completely separate the lower assembly from the display assembly yet. There is a cable connecting the two that must be disconnected first.

## Step 8



- Use tweezers to remove the small rubber strip between the battery and the display ZIF connector.

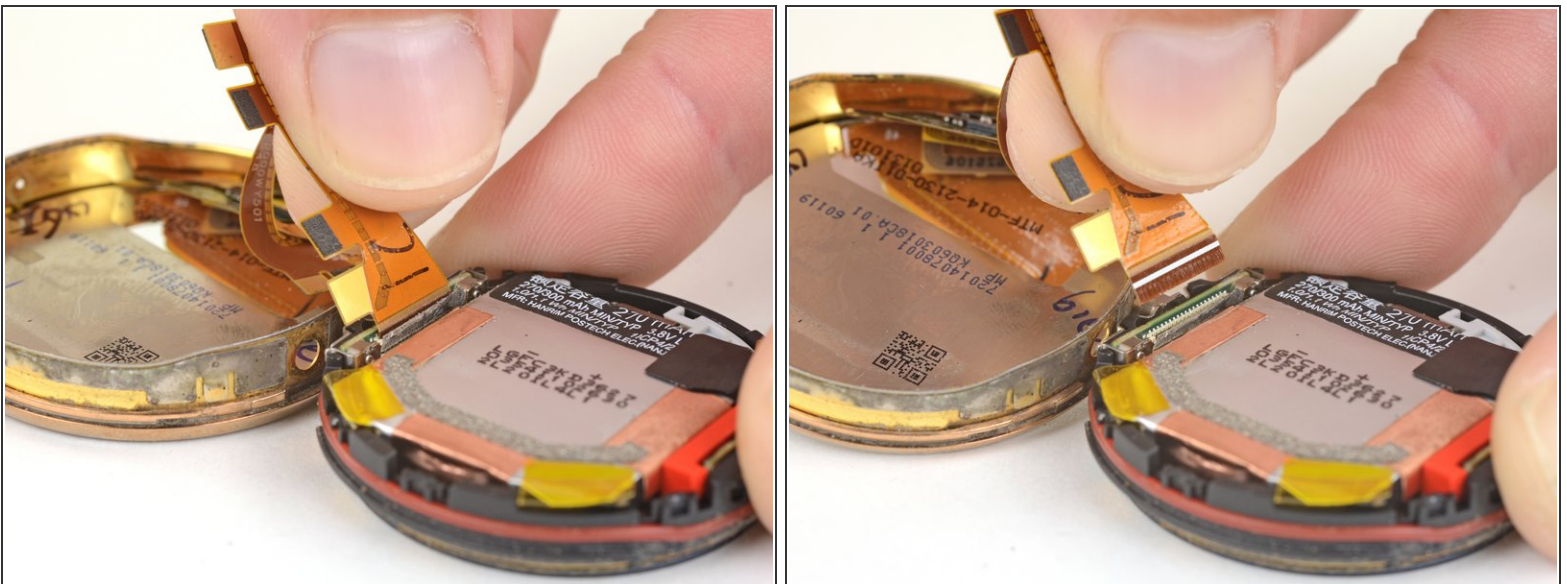


## Step 9



- Use a spudger to lift the locking flap on the display ZIF connector.

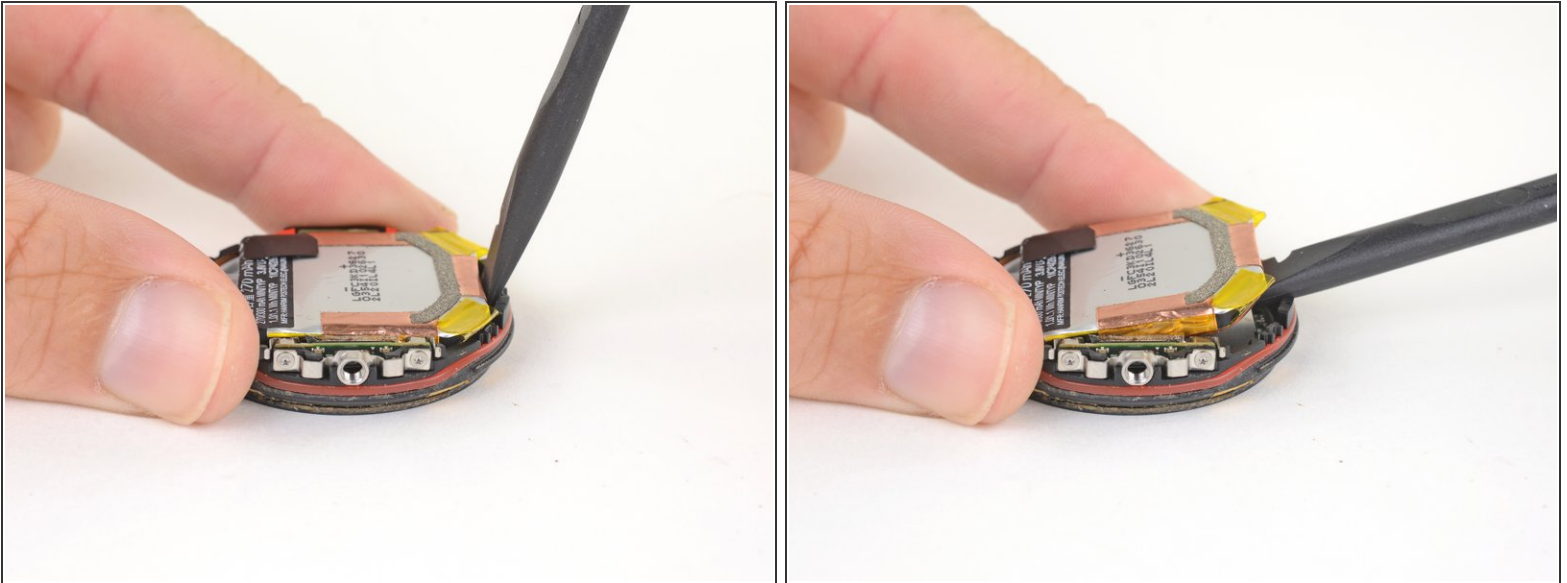
## Step 10



- Lift the display cable straight out of its connector on the motherboard.

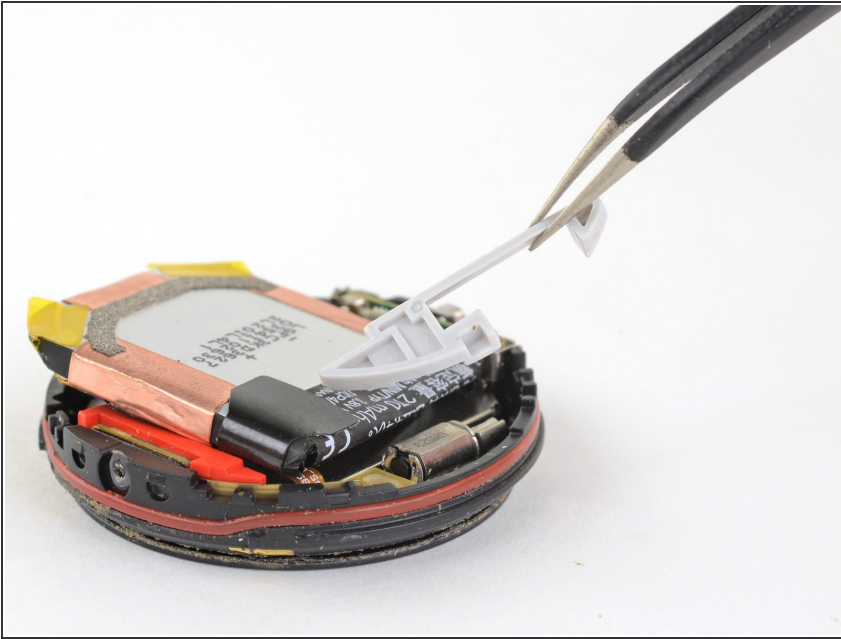


## Step 11 — Remove the battery



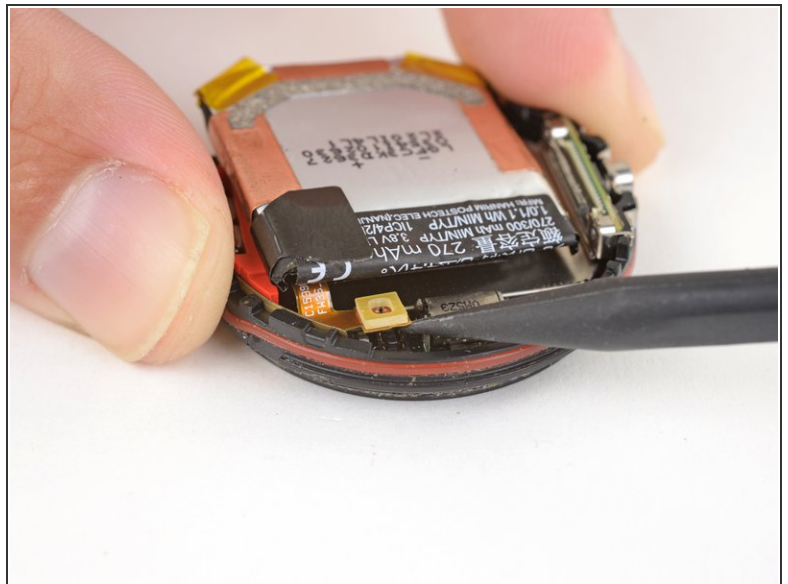
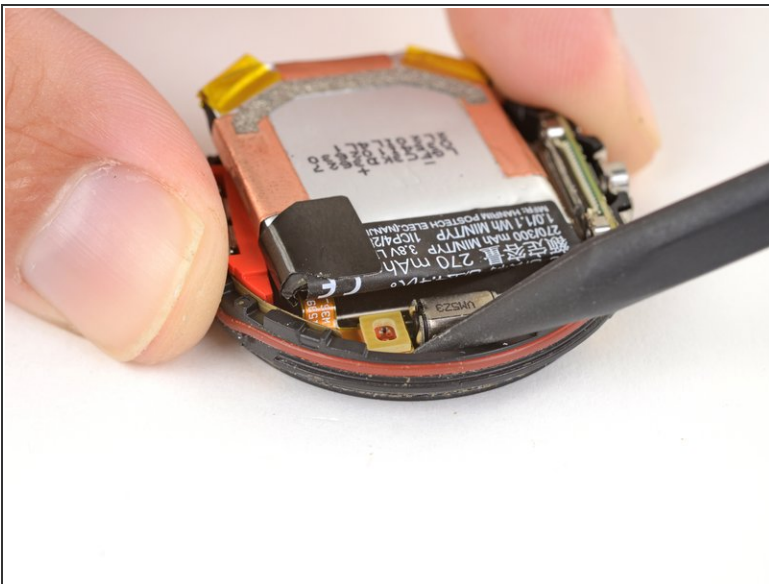
- Use the flat end of a spudger to gently pry the battery out of the case.
  - ⓘ The adhesive can be stubborn. If the battery does not come out initially, apply heat to soften the adhesive.
  - ⓘ If the shield over the motherboard comes off with the battery, use an opening pick to separate the battery and the shield, then snap the shield back onto the motherboard.
- ⚠ Do not pull the battery all the way out after you separate it from the shield. There is a fragile battery cable that must be disconnected before the battery is completely removed.

## Step 12



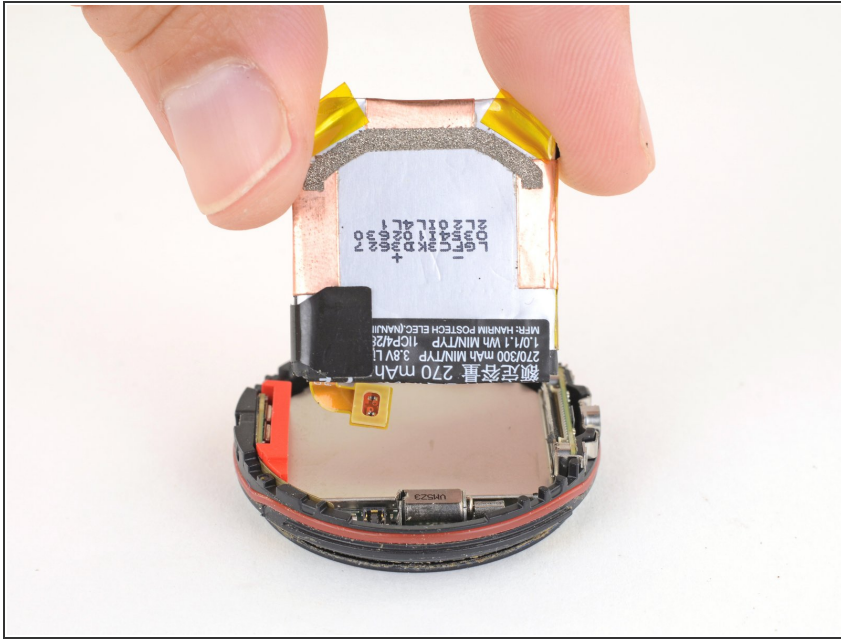
- Use tweezers to lift out the grey plastic cover over the battery connector.

## Step 13



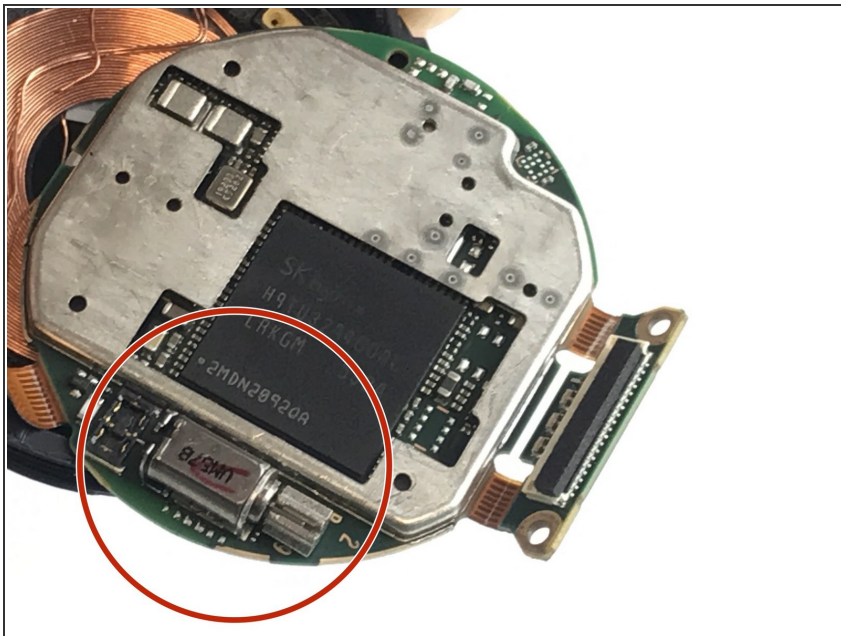
- Use the point of a spudger to pry up the battery connector and disconnect the battery.

## Step 14



- Remove the battery.

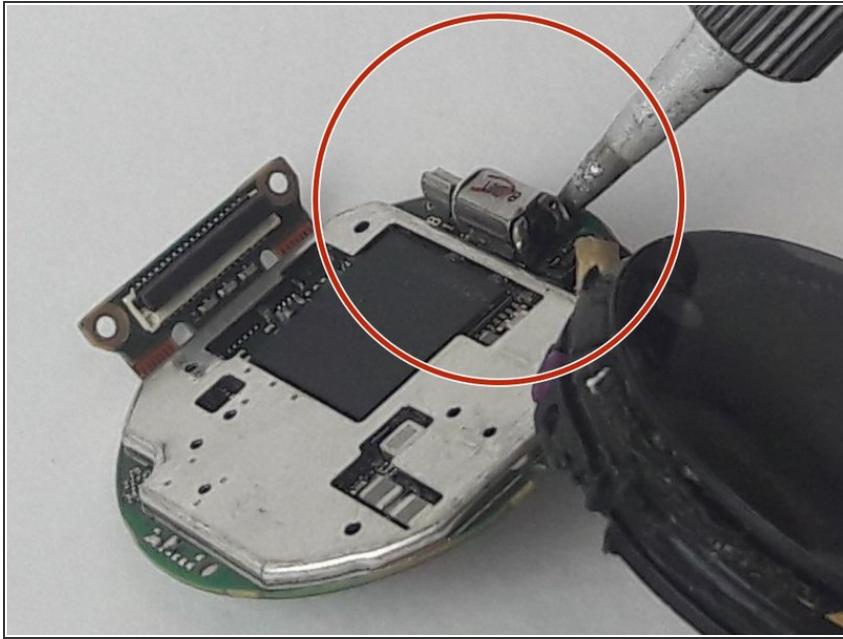
## Step 15 — Vibration Motor



- After removing the battery the vibration motor will be visible.



## Step 16



- Using a soldering iron, carefully remove the vibration motor by applying the tool under the vibration motor.

To reassemble your device, follow these instructions in reverse order.