



# D-Link HD Wi-Fi Camera Light Sensor Replacement

This guide will show you how to replace the board containing the light sensor for the D-Link 936L security camera.

Written By: Morgen Jaques



## INTRODUCTION

This guide will show how to take apart a D-Link DCS 936L Wi-Fi security camera and remove the board containing the microphone, LED lights, light sensor, and Wi-Fi signal indicator using an opening tool and a Phillips#00 screwdriver. Because of how small and fragile these pieces are, as well as the design of the board, we found it is much more realistic (and uses much less swearing) to replace this board rather than attempt to replace the individual elements.



### TOOLS:

- [Phillips #00 Screwdriver](#) (1)
  - [iFixit Opening Tools](#) (1)
-

## Step 1 — Motherboard



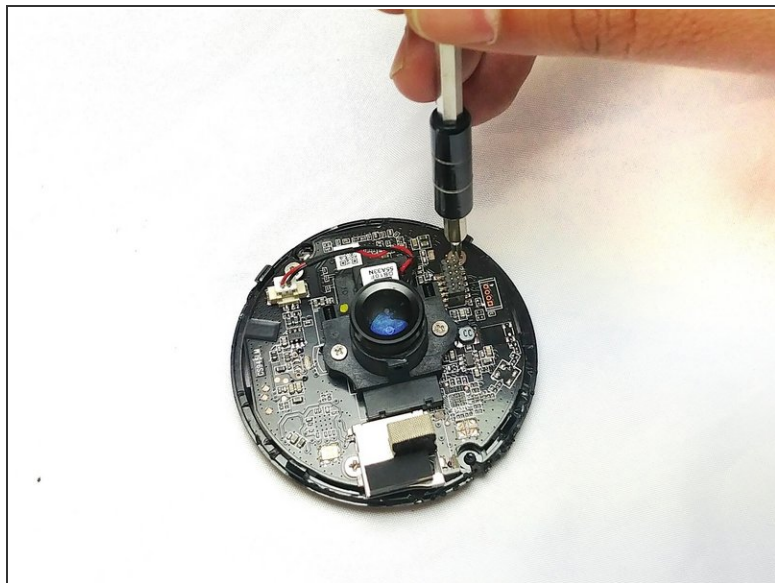
- Place the camera upwards between your thumb and first finger.
- Tilt the camera to the best position and loosen the captive linings using a plastic opening tool.
- Slide the top cover outwards to separate the upper section from the lower lid using the plastic opening tool.

## Step 2



- Remove the 6.0mm Phillips #00 screws that secure the back cover to the inner frame.
- Lift the rear lid upwards using your fingers and separate it from the internal components and motherboard.

## Step 3



- Unscrew the motherboard from the frame. There are 3 Phillips #00 5.0mm screws holding it in place.
- Then (gently!) remove the motherboard and the lens with your fingers.

## Step 4 — Microphone



- To remove the front cover, place index finger in the center and pull away from the frame. This may take a little effort, but should not require an opening tool.

## Step 5



- After the cover is removed, unscrew the two Phillips #00 5.0mm screws. Then the board should slide right out.

## Step 6 — Light Sensor



- The light sensor is located at the bottom of the board.

To reassemble your device, follow these instructions in reverse order.

This document was generated on 2020-11-28 06:08:34 AM (MST).

