

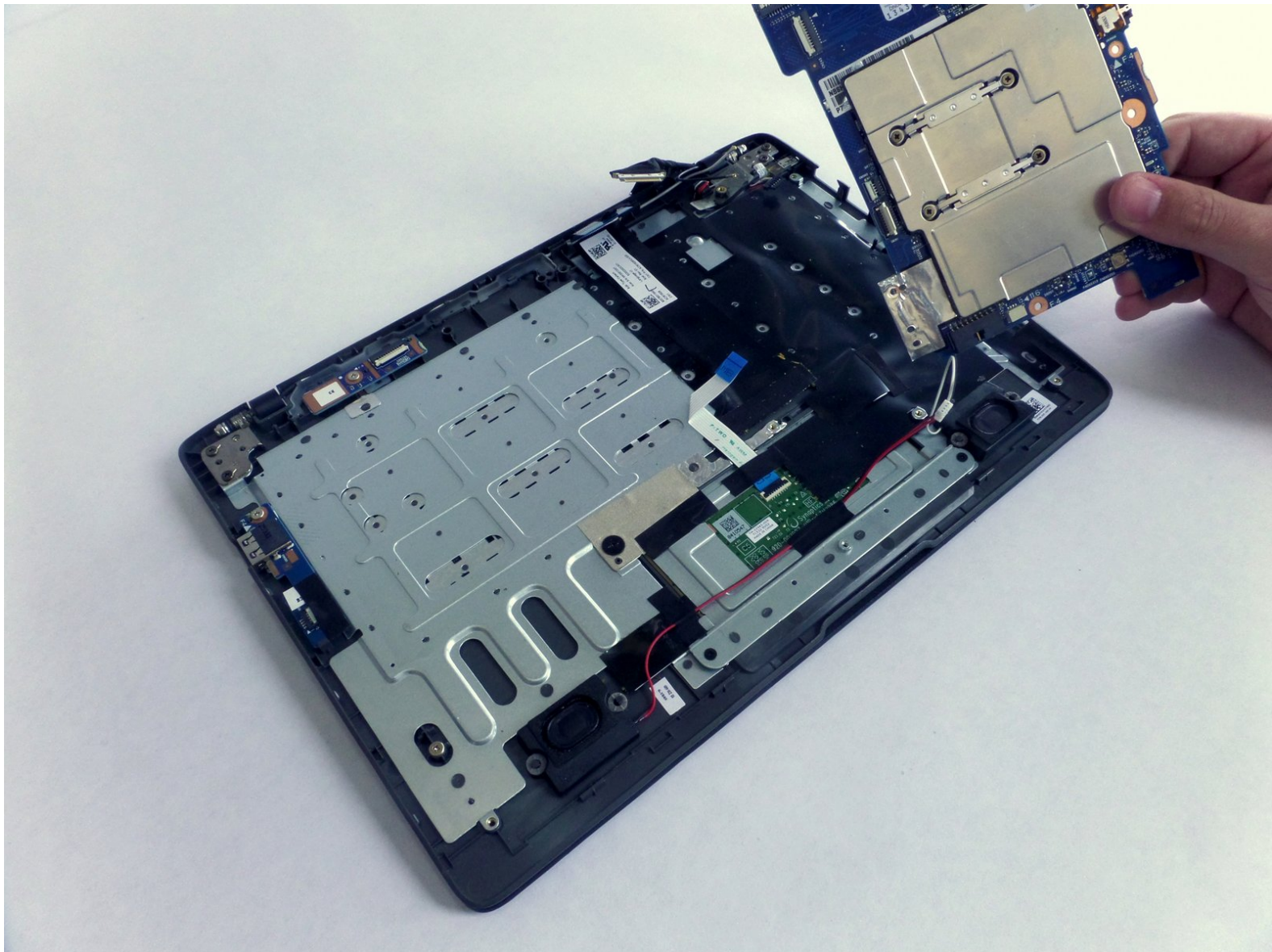


Acer Aspire One Cloudbook 11 AO1-131-C7DW

Motherboard Replacement

A replacement guide on how to replace the motherboard. Several parts of the laptop are soldered to the motherboard.

Written By: Luz Villegas



INTRODUCTION

The motherboard is a key component for any laptop and a damaged motherboard means that the laptop will not work as intended. This guide shows you how to replace the motherboard for this laptop.



TOOLS:

- [IFIXIT screwdriver with a PH0 bit](#) (1)
 - [nylon pry tool](#) (1)
 - [Tweezers](#) (1)
-

Step 1 — Back Panel



- Power the laptop off.
- Flip the laptop over and position it so the opening faces you.
- Remove the rubber foot located near the opening side of the device using tweezers.

Step 2



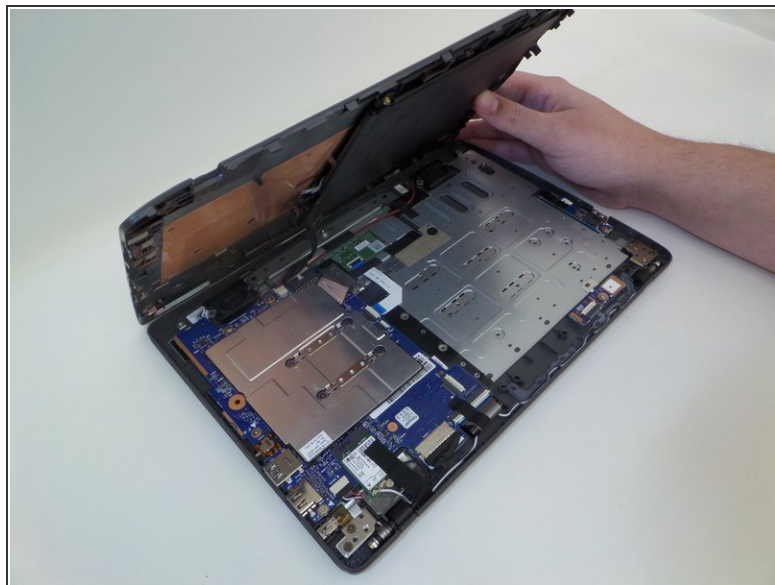
- Unscrew the five 5-mm screws using the PH0 screwdriver.

Step 3



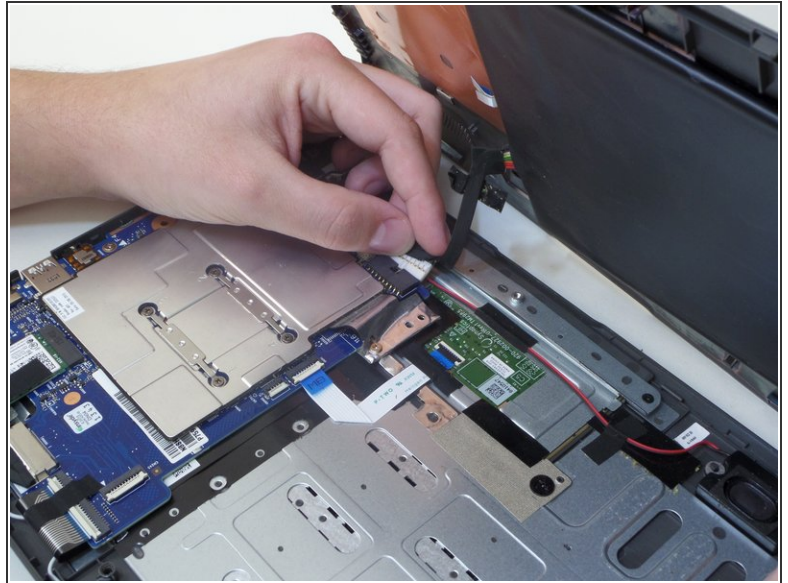
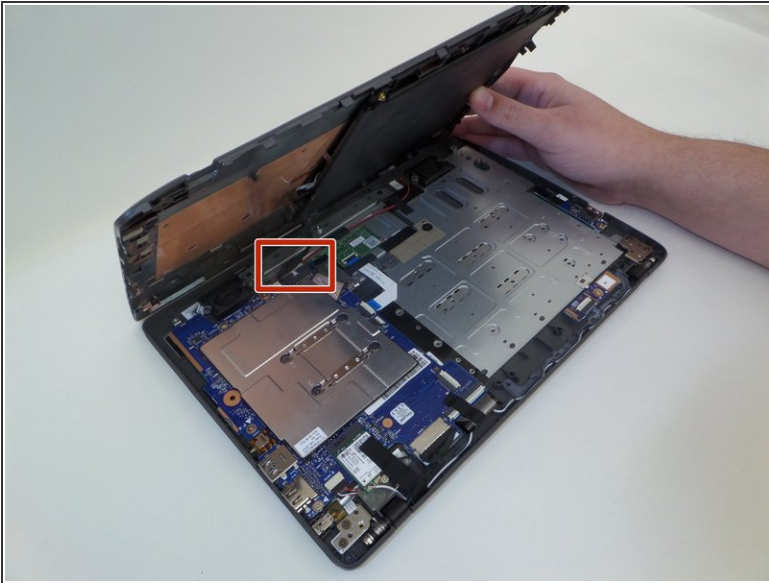
- Identify the HDMI port located in the side of the laptop opposite to the power button.
 - Insert the plastic opening tool into the divet of the back panel located above the HDMI port.
 - Pry along the laptop frame until the back panel comes loose.
- ⚠ Do not pull the back panel too hard as the battery is still connected to the back panel and the motherboard. This can damage your device.

Step 4



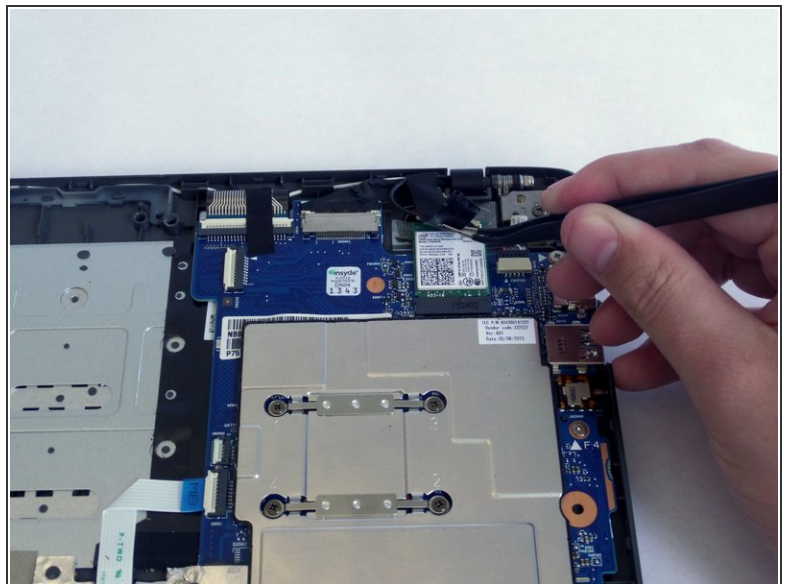
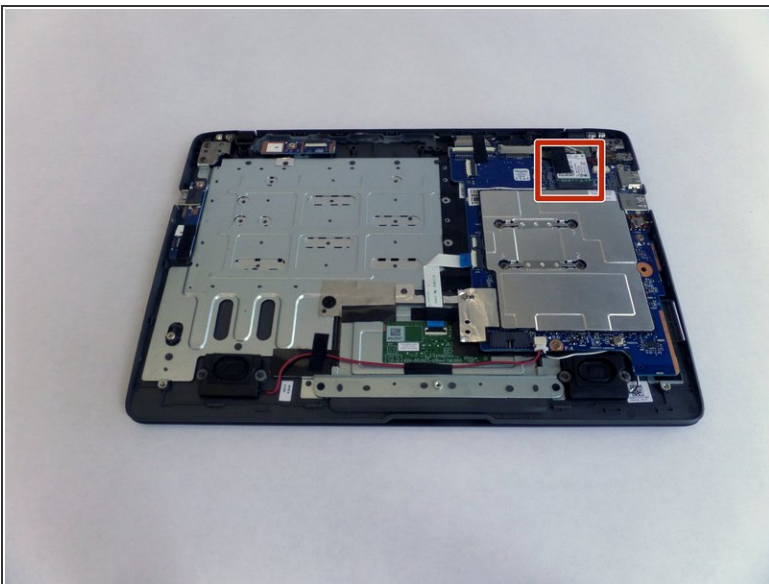
- Rotate the device so the opening faces you again.
- Hold the back panel away from the laptop and remove the 4-mm screw using the PH0 screwdriver.
 - ⓘ This screw is fastening the battery to the laptop.
- Lift the back panel gently.

Step 5



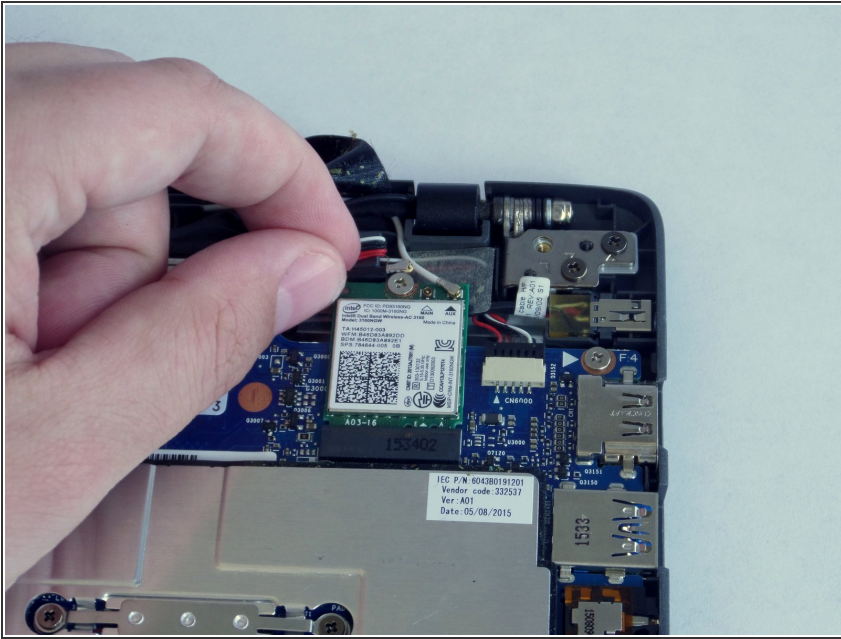
- Unplug the cable that connects the battery to the motherboard.
- Detach the back panel, which still includes the battery.

Step 6 — WiFi Module



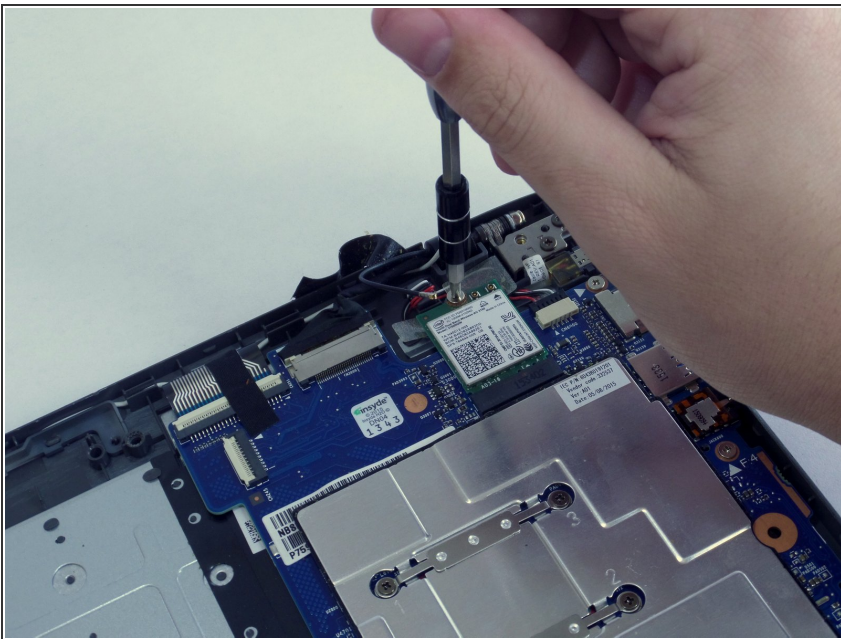
- Position the computer so the opening side faces you.
- Remove the tape holding the WiFi module using tweezers.

Step 7



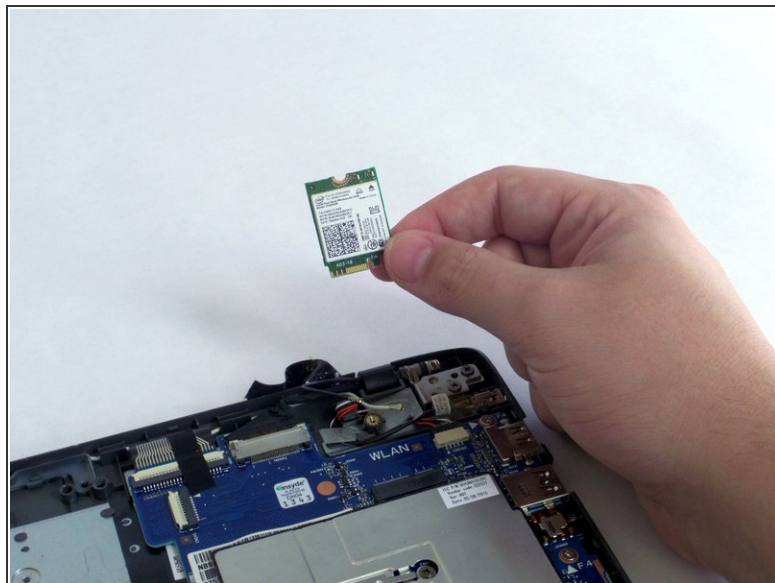
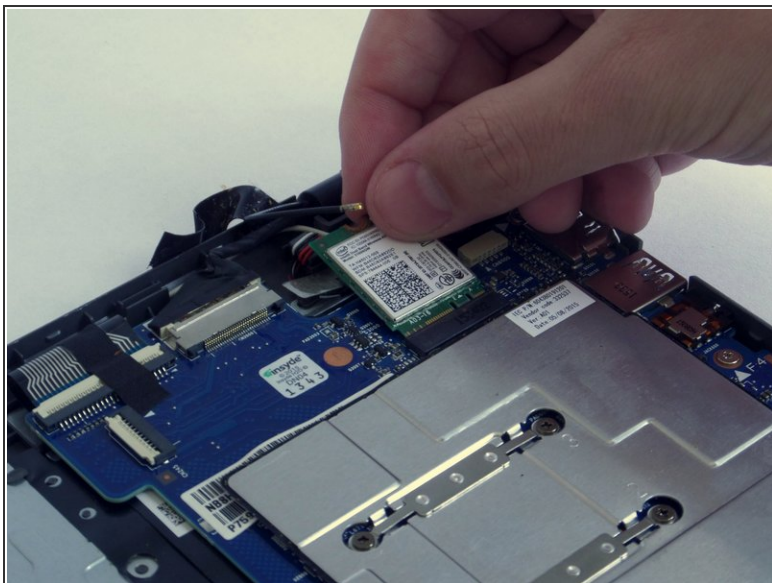
- Unplug the white and black wires by lifting them up by hand or using tweezers.

Step 8



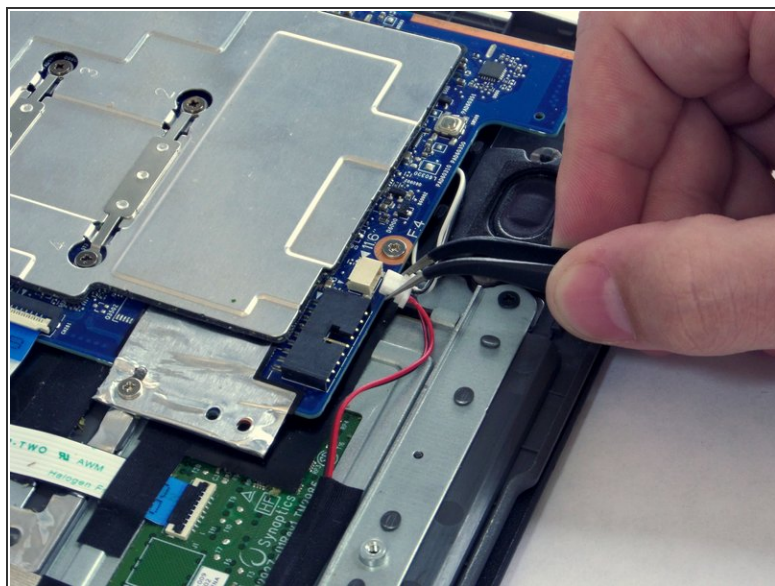
- Remove the 3-mm screw that holds the WiFi module to the motherboard using the PH0 screwdriver.

Step 9



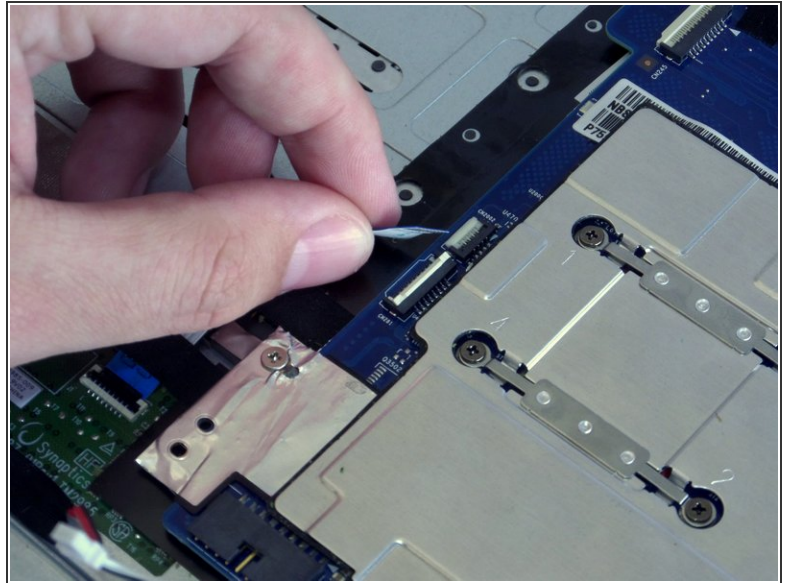
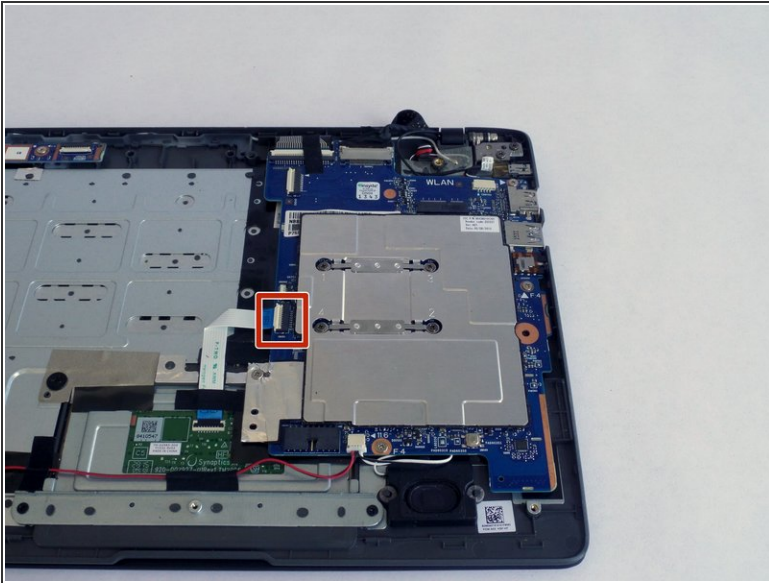
- Pull the WiFi module out of the connector.

Step 10 — Motherboard



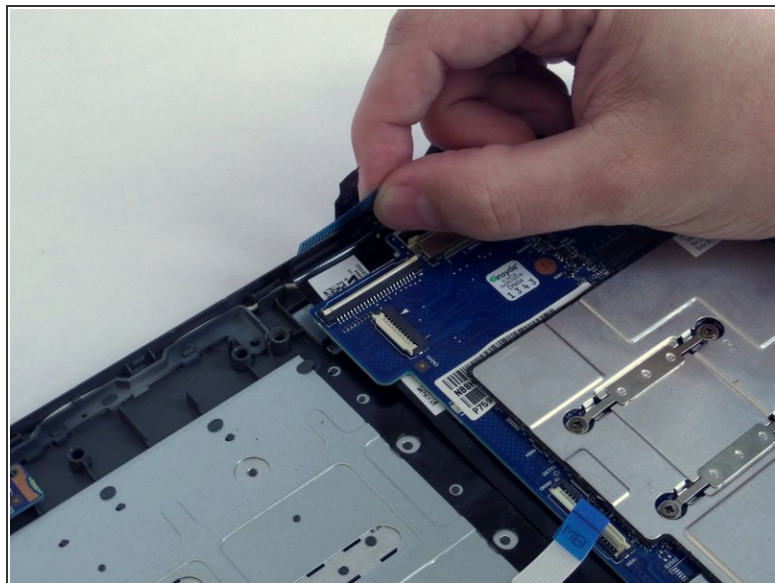
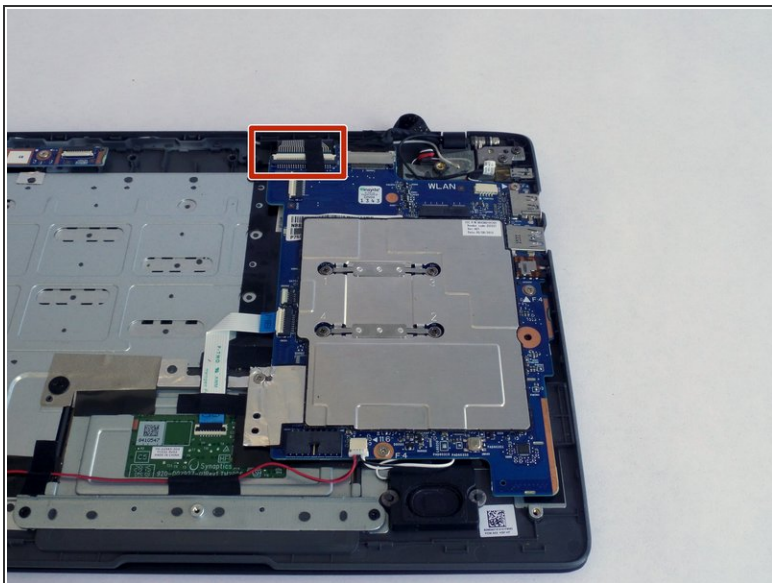
- Unplug the speaker connector using tweezers.

Step 11



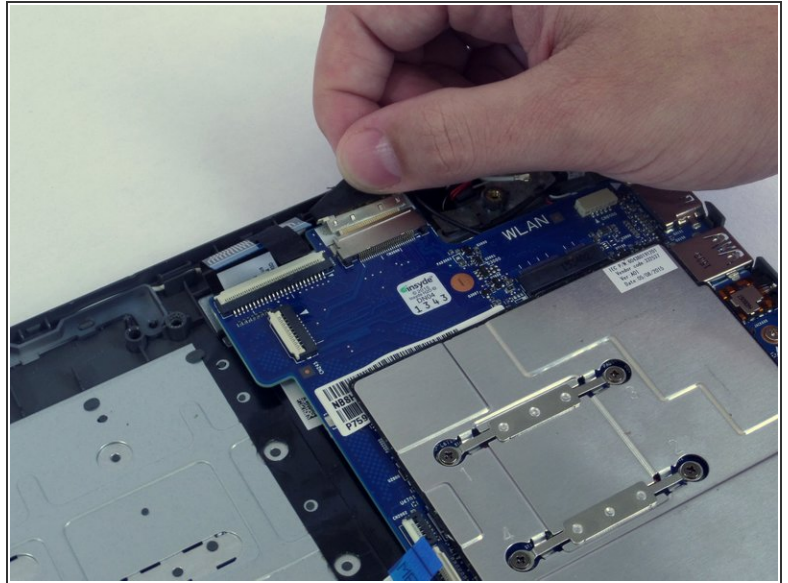
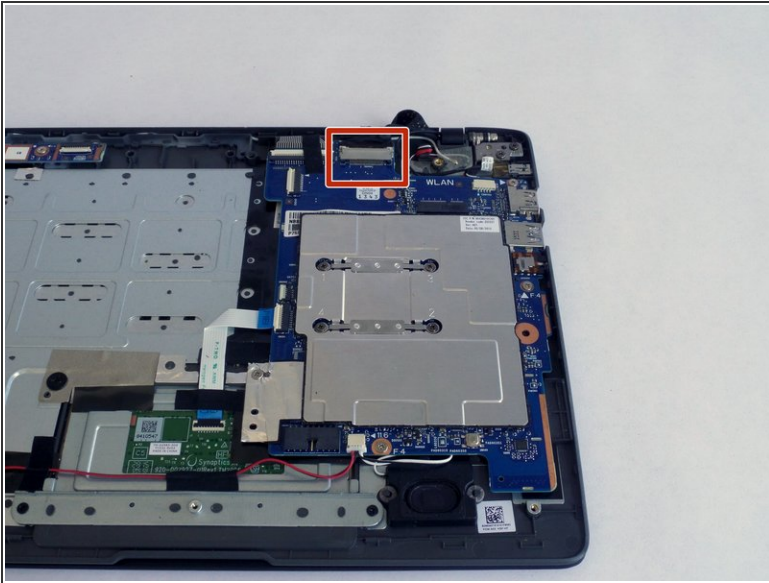
- Lift the white hinge that holds the cable with a blue plastic strip.
- Pull the blue strip away from the motherboard.

Step 12



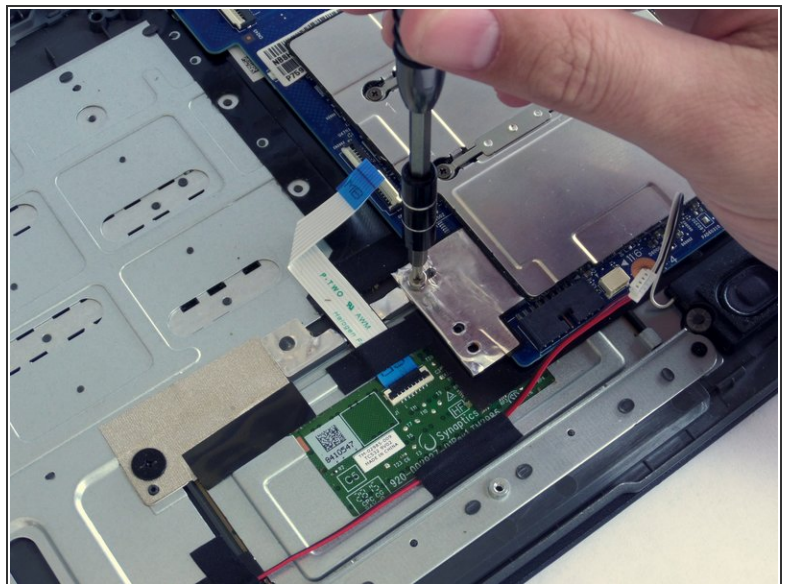
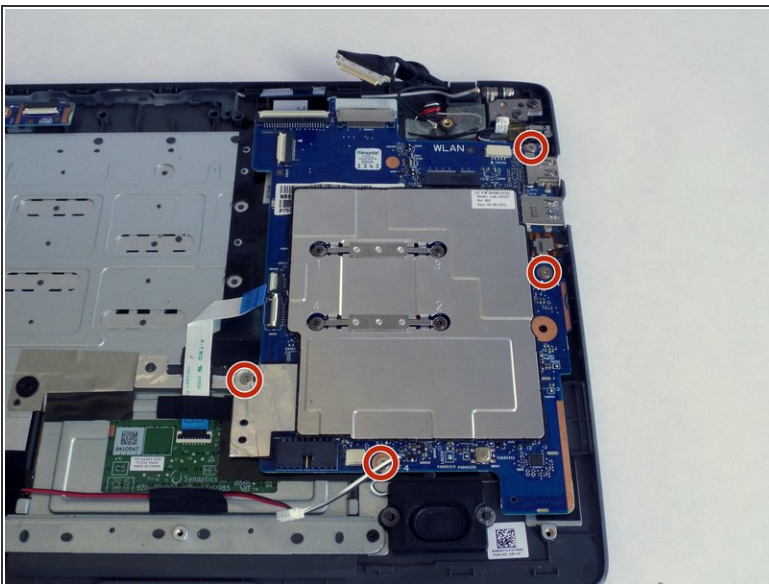
- Lift the wider hinge located at the top of the motherboard holding another grey strip cable.
 - Pull the strip cable away from the motherboard.
- ☞ These cables look similar so make sure not to mix them up when putting the laptop back together.

Step 13



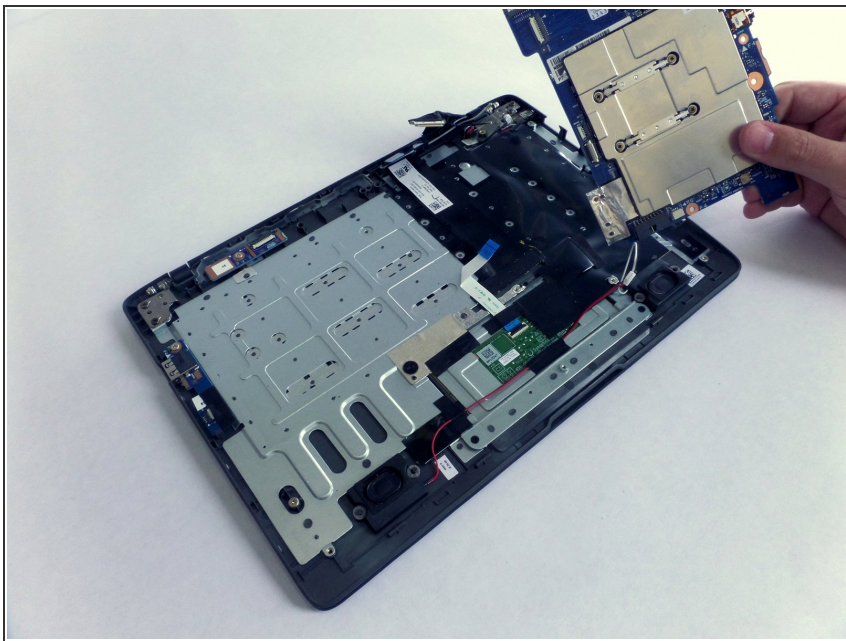
- Unplug the black covered cable from the top of the motherboard.
- i** This cable is located to the right of the last strip cable from the previous step.

Step 14



- Remove the four 4-mm screws holding the metallic plate using a PH0 screwdriver.

Step 15



- Detach the motherboard by lifting it up and away from the body of the laptop.

To reassemble your device, follow these instructions in reverse order.