



HP Pavilion Wave 600-a010 Speaker Replacement

This guide will help give direction to properly...

Written By: clayton stokes



INTRODUCTION

This guide will help give direction to properly remove the speaker from your HP Pavilion Wave Desktop PC. Tools required for this removal include Phillips and Torx head screwdrivers, metal and plastic prying tools, and a magnetic arrangement pad.

TOOLS:

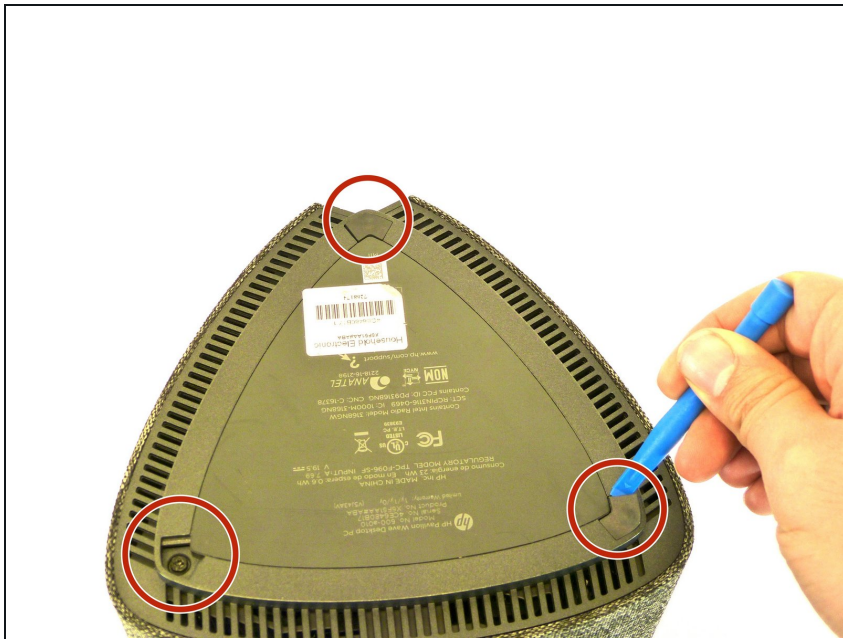
[iFixit Opening Tool](#) (1)

[Phillips #2 Screwdriver](#) (1)

[Mako Driver Kit - 64 Precision Bits](#) (1)

[Metal Spudger](#) (1)

Step 1 — Hard Drive



- Remove the three rubber footings by prying from the bottom cover using the plastic opening tool.

Step 2



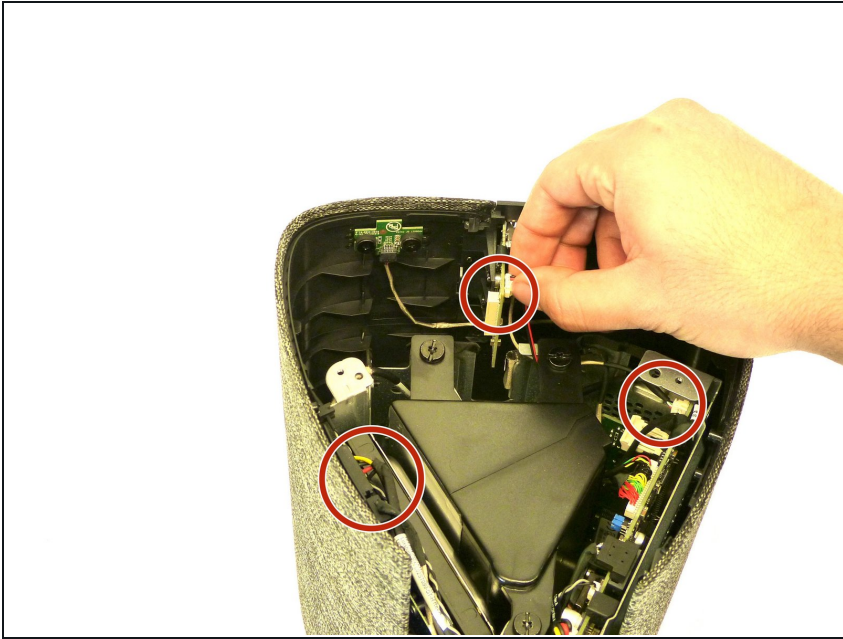
- Remove the three 24 mm screws from the bottom cover using a Phillips #2 screwdriver.

Step 3



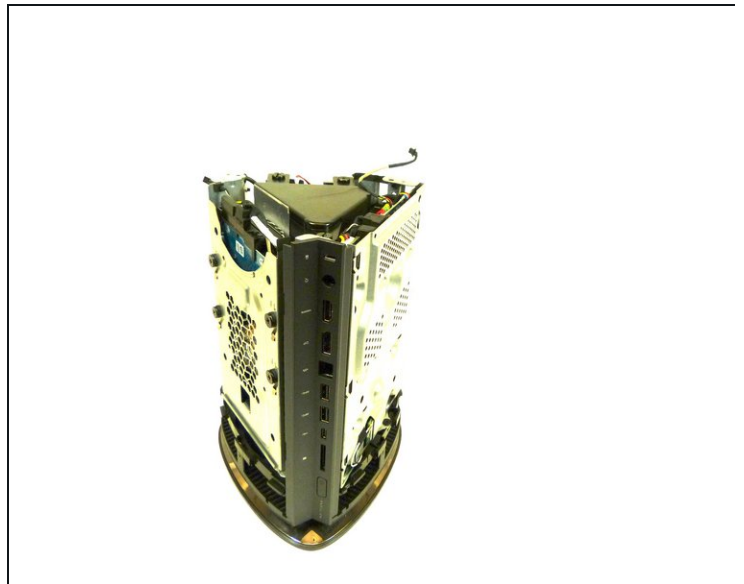
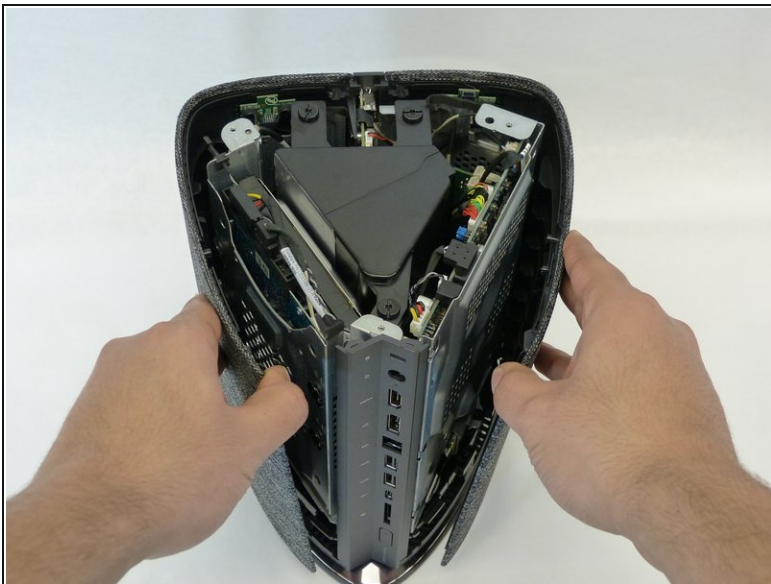
- Remove the bottom cover by lifting it up from chassis.

Step 4



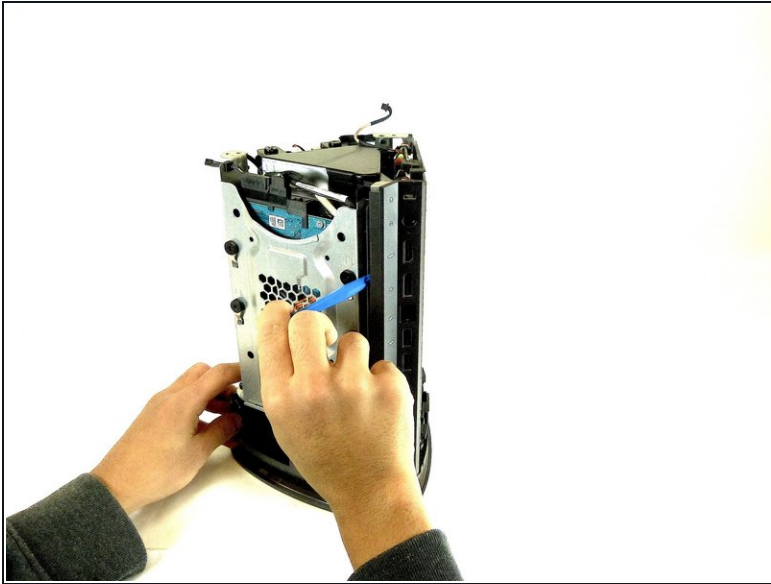
- Remove the three wires connecting the outer cover and front I/O port to the internal components (front usb and auxiliary assembly).

Step 5



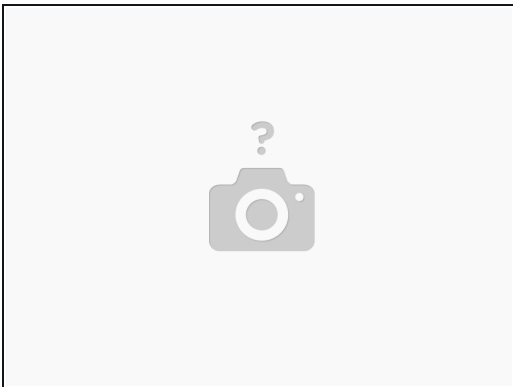
- Remove the outer cover by gently pulling apart and pulling away from the chassis.

Step 6



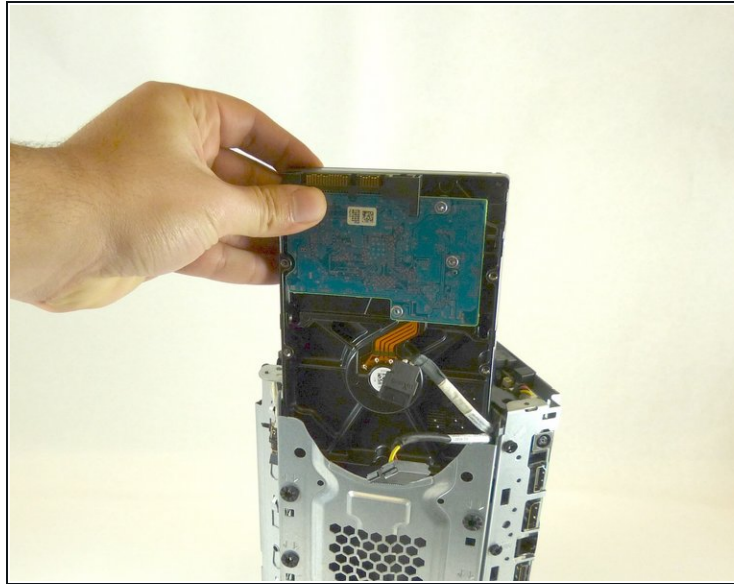
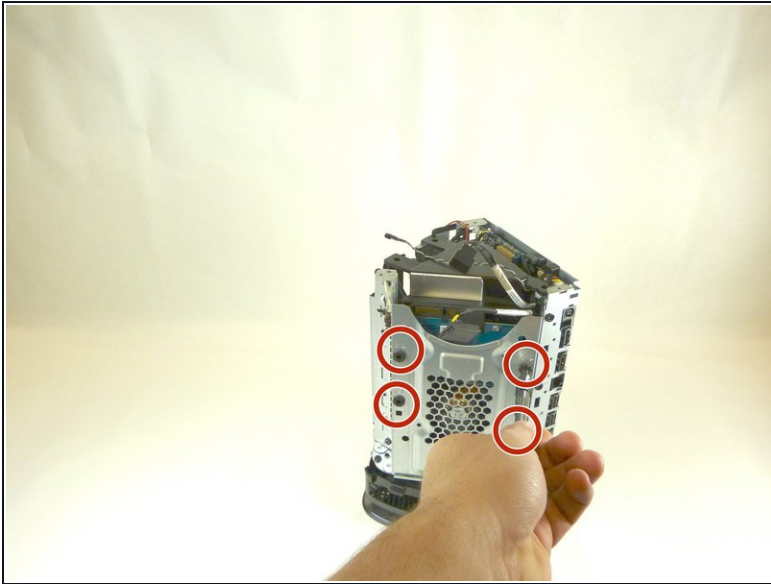
- Remove rear I/O bezel using plastic opening tool to pry apart the four clips holding the I/O bezel to the chassis.

Step 7



- Remove all other remaining cables from unit using the plastic opening tool to carefully pry apart the connections.

Step 8



- Remove the HDD by first using the Phillips #2 screwdriver to remove the four 23 mm screws holding together the assembly and then pulling the HDD out of the chassis.

Step 9 — Microphone



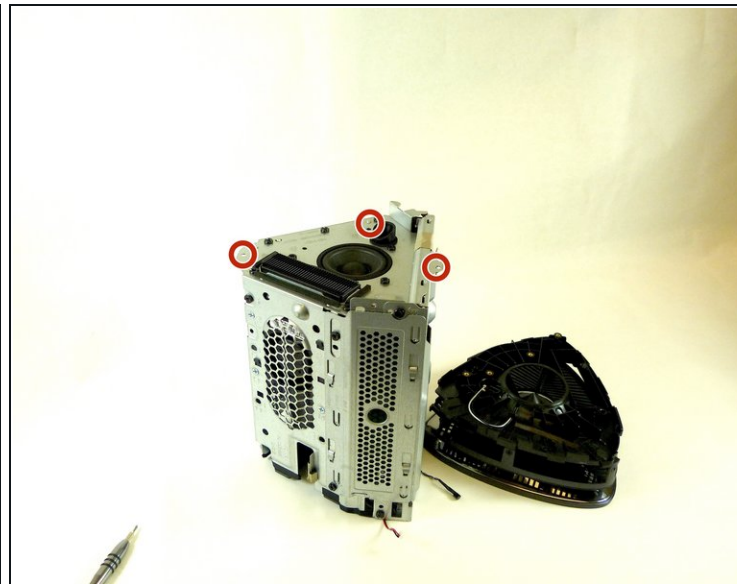
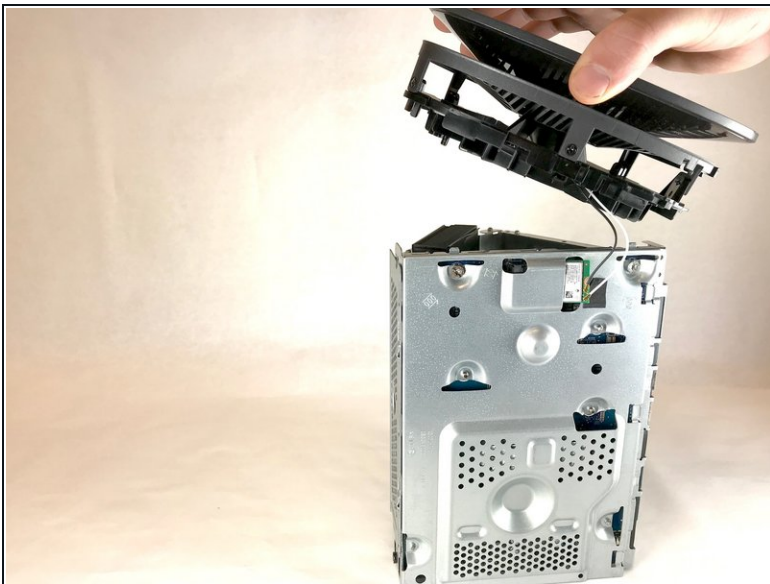
- Remove the three 24 mm screws that connect the top cover to the chassis inside the HDD compartment using the Torx #15 screwdriver (an extension and torque lever might be useful).

Step 10



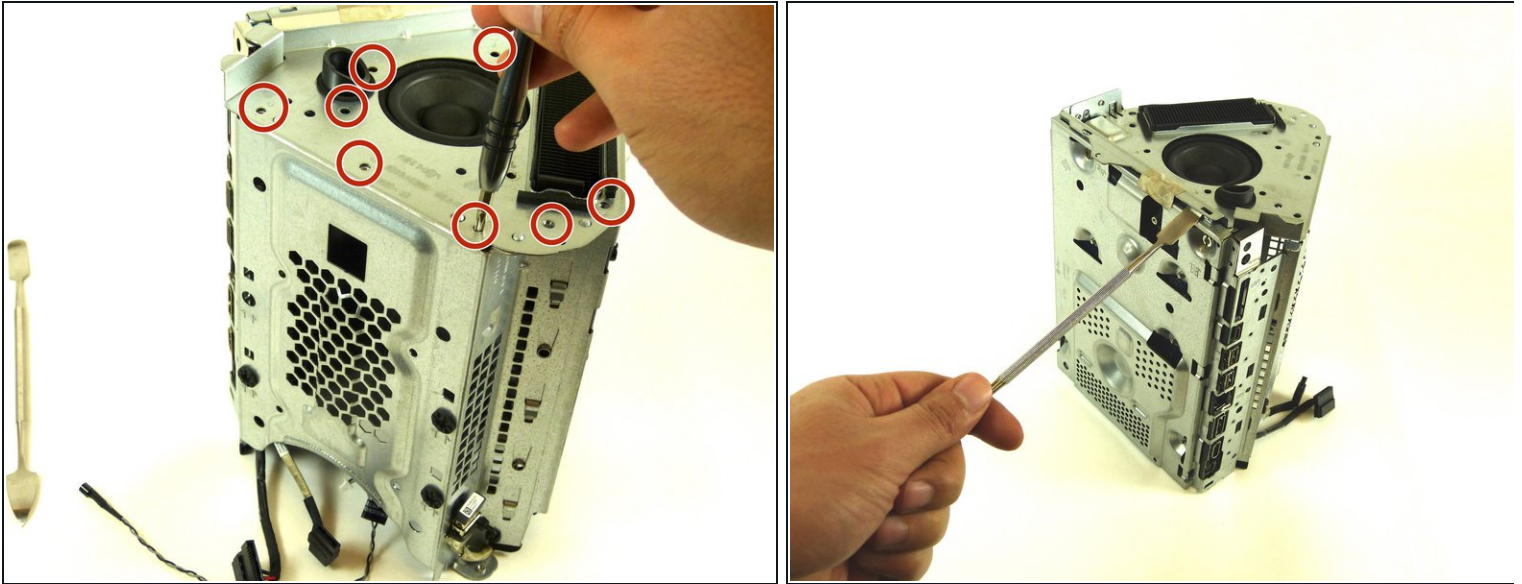
- Disconnect the microphone computer chip from the internal components by first peeling away the black adhesive holding the wires to the chassis and gently pulling the chip and wires from its connection.

Step 11



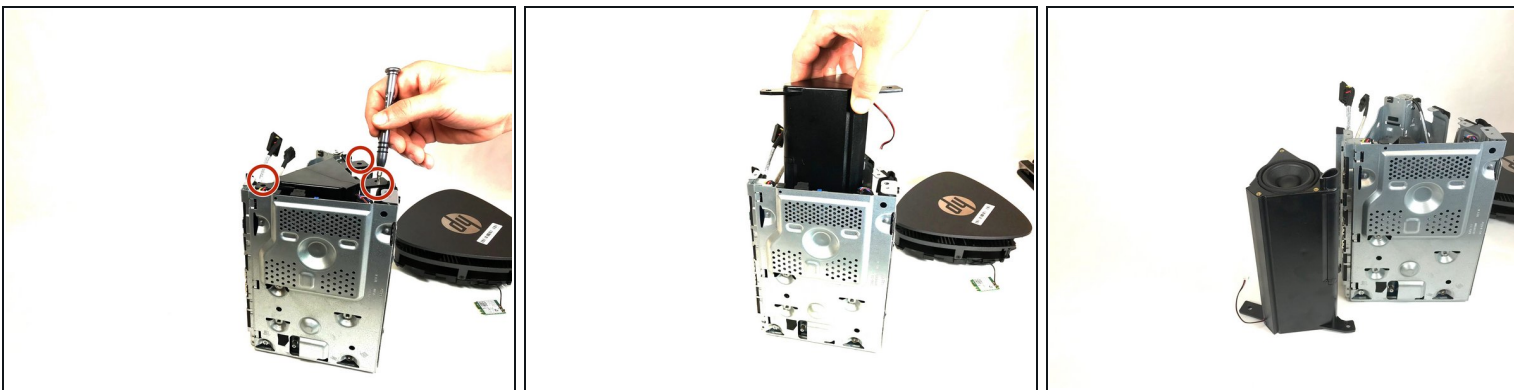
- Remove the top bezel from the unit using a Torx Head #15 screwdriver to remove three 24 mm screws and a Phillips Head #00 screwdriver to remove the single 24 mm screw around the outside edge of the chassis.

Step 12 — Speaker



- Remove the top chassis cover from the main chassis using the Torx Head #15 screwdriver to remove the nine 24 mm screws and then use the metal prying tool to pry the top chassis cover from the clips holding it to the main chassis and lift carefully away from internal components.

Step 13



- Remove the speaker by removing three 24 mm screws using the Torx Head #15 screwdriver and carefully lifting up and out from internal components.

To reassemble your device, follow these instructions in reverse order.