



Poin2 Chromebook 11 Battery Replacement

Replace a defective battery in a Poin2 Chromebook 11 or remove it to test the AC adapter.

Written By: Henry Covey



INTRODUCTION

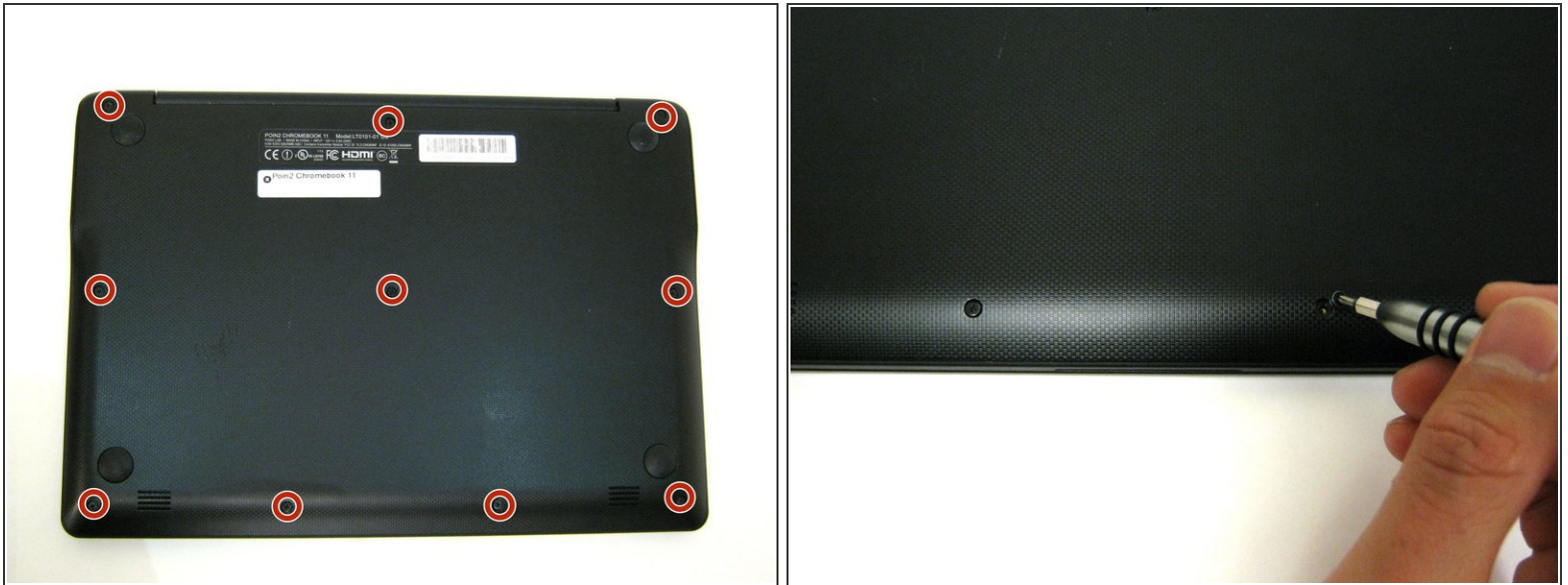
This guide shows how to replace a defective battery from a Poin2 Chromebook 11, remove the battery to test the device's power adapter, or remove the battery in order to access another component.



TOOLS:

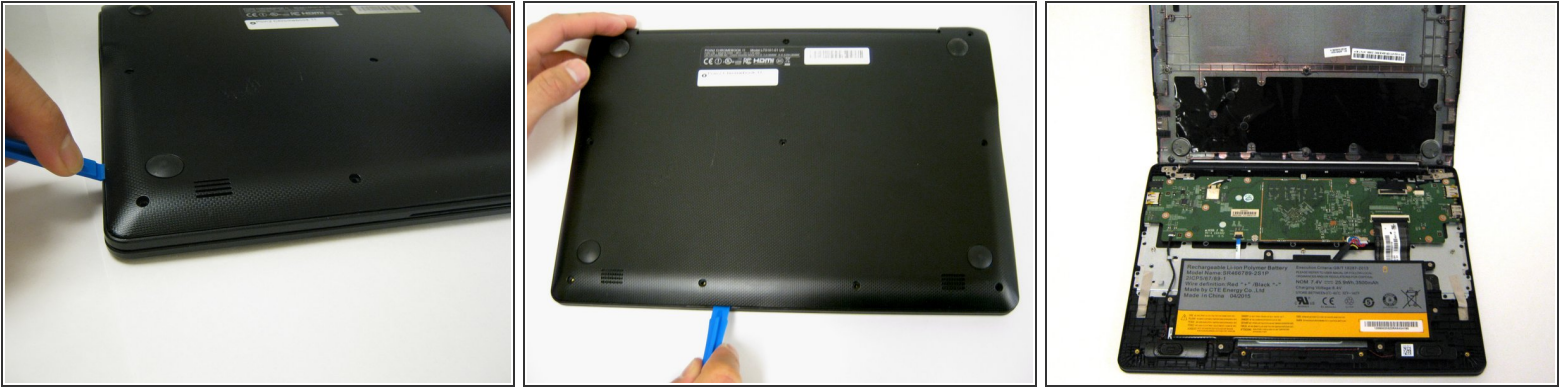
- [Phillips #0 Screwdriver](#) (1)
 - [Spudger](#) (1)
 - [iFixit Opening Tools](#) (1)
-

Step 1 — Battery



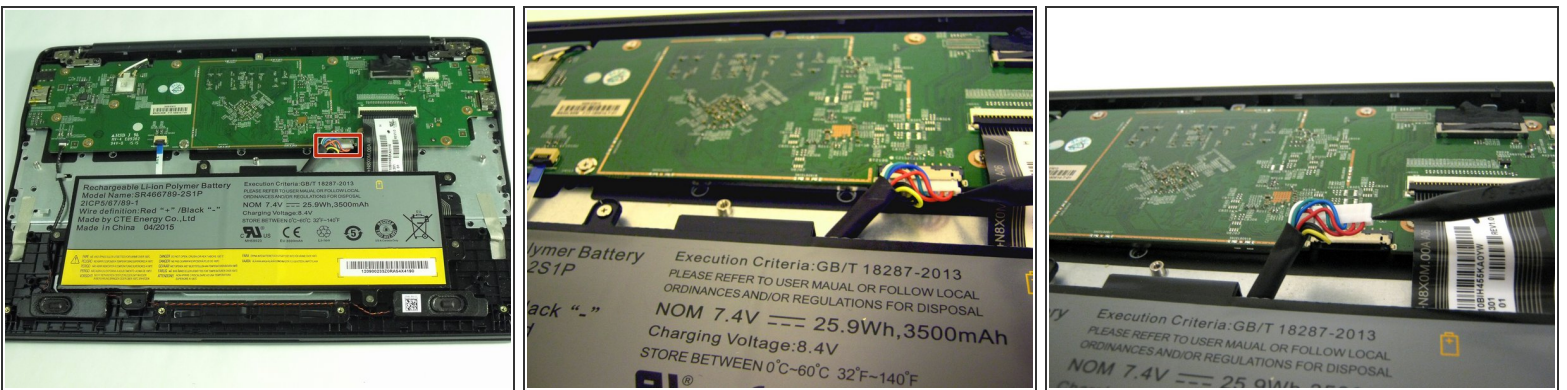
- Power down the Poin2 Chromebook 11 and disconnect the power adapter.
- Close the Chromebook and position it with the base facing up.
- Use a #0 Phillips screwdriver to unscrew the ten 7mm screws that hold the base to the rest of the frame
- ⓘ Poin2 Chromebook 11 does not have screws under its rubber feet at the base.

Step 2



- Insert a 1cm-wide plastic opening tool between the base and top frame.
- ① Applying pressure up and down with the tool may be necessary. When you hear a "click," this indicates the separation of the frame.
- Pry (up and down) around the entire border of the Chromebook to separate.
- Use your hands to gently lift the base away from the frame.

Step 3



- Disconnect the white 8-wire battery connector from the motherboard using a spudger to push the two L-shaped clips out of the port.
- ① The connector is a tight fit and requires careful pressure for release.

Step 4



- Remove the six 4mm screws using a Phillips #0 screwdriver.

Step 5



- Lift the battery from the frame.

To reassemble your Poin2 Chromebook 11, follow these instructions in reverse order.