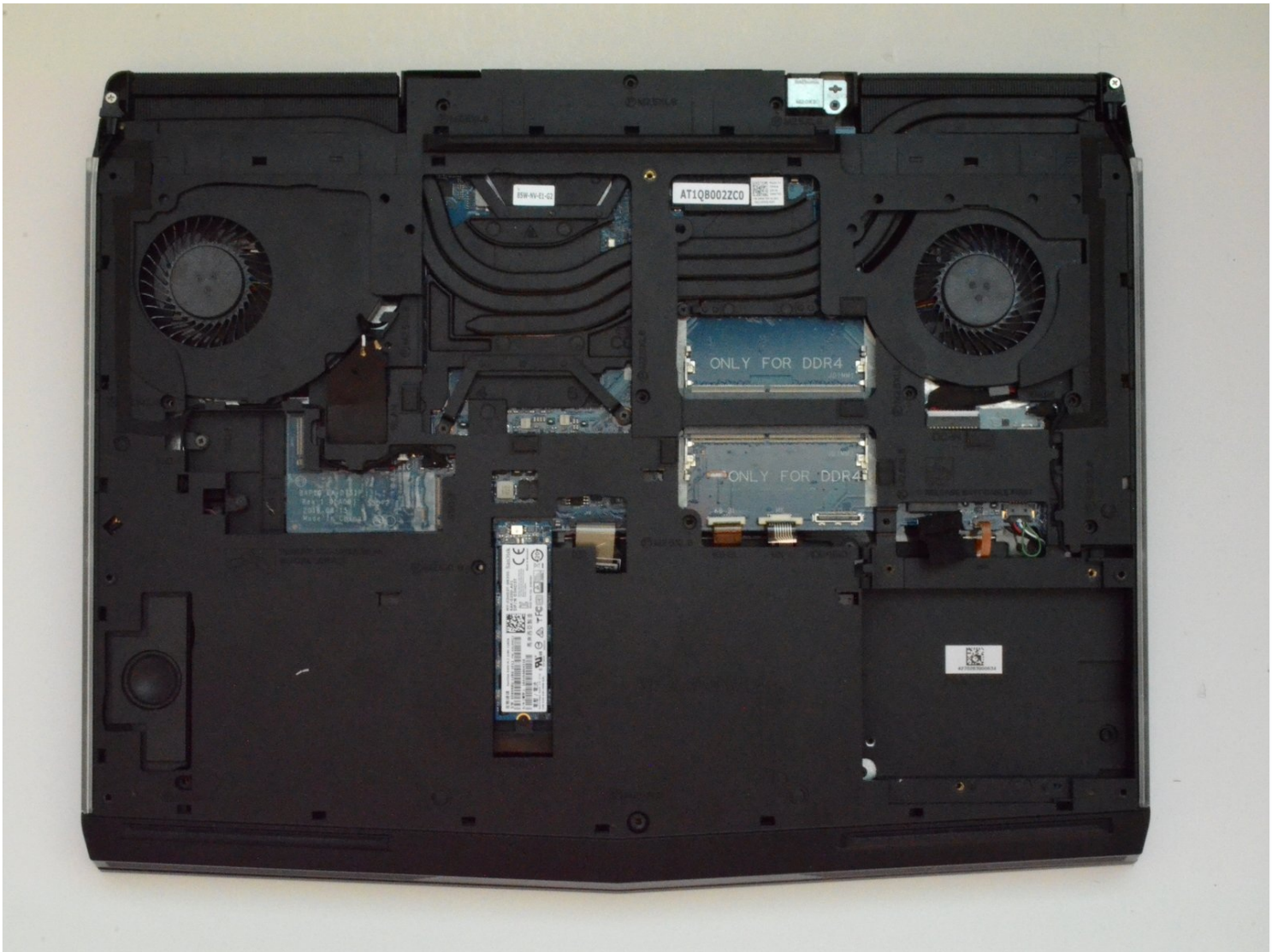




# Alienware 17 R4 Plastic Cover Replacement

In order to access the inner parts of the...

Written By: Hector Mendez III



# INTRODUCTION

In order to access the inner parts of the laptop both the fan shroud and plastic cover have to be removed. This guide will show you how to remove the plastic cover.

## TOOLS:

Phillips Head Screwdriver: Size PH1 (1)

iFixit Opening Tool (1)

## Step 1 — Base Cover



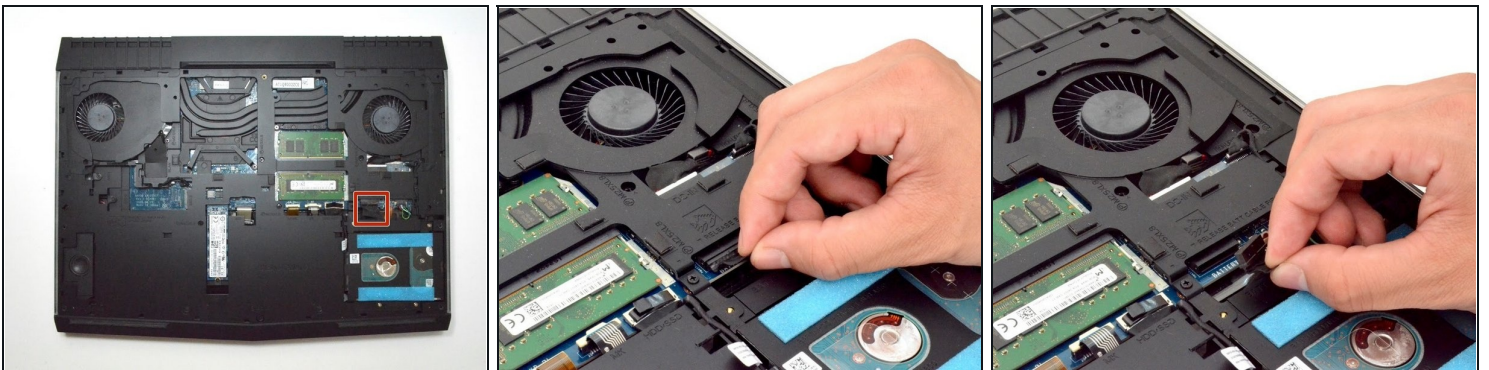
- Use a **PH1 screwdriver bit** to remove the **six M2.5x13 screws (2.4 mm)** on the back of the laptop.
- Use a **PH1 screwdriver bit** to loosen the **one M2x3 screw (1.9 mm)**.
  - ⓘ The **M2x3 screw (1.9 mm)** does not come out completely.

## Step 2



- Pull the base cover up to remove it.
  - If you are having trouble, insert a **plastic opening tool** into the divots along the laptop's edges to loosen.
- ⓘ Removing the cover may require some force.

## Step 3 — Hard Disk Drive (HDD)



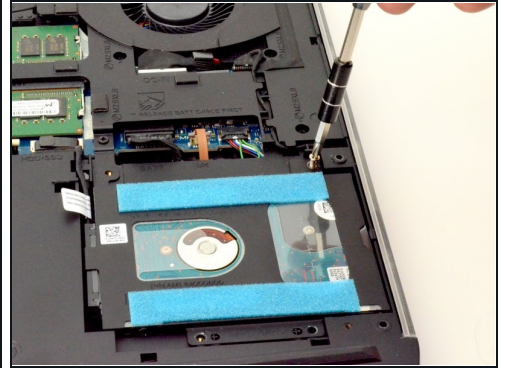
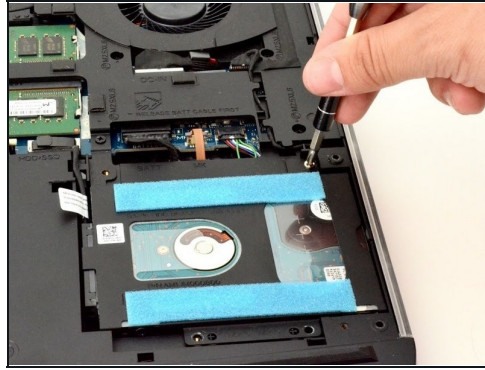
- Disconnect the **battery connector cable**, located on the right side of the laptop, above the hard disk drive.

ⓘ Once you have removed the cable, wait **5-10 minutes** to allow the laptop to power down.

⚠ Failure to remove the battery connector cable properly may damage other parts of the laptop.



## Step 4



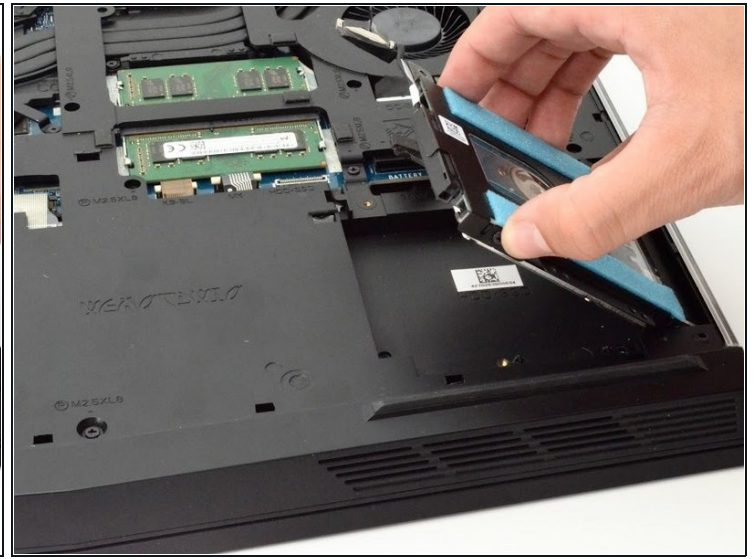
- Use a **PH1 screwdriver bit** to remove the **four M2.5x5 screws (2.4 mm)** on the hard disk drive.

## Step 5



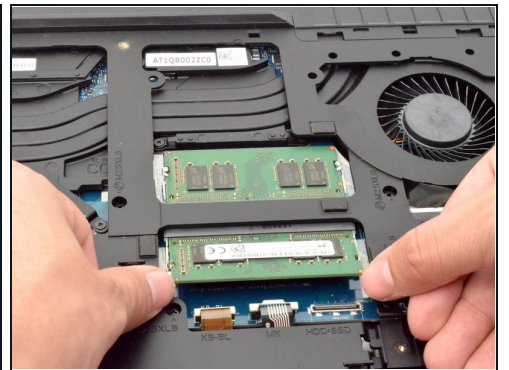
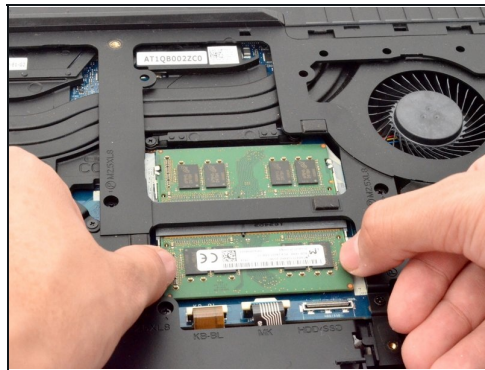
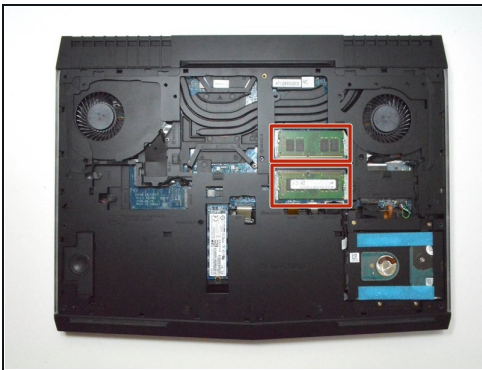
- **Gently** lift the HDD cable to disconnect it from the laptop.

## Step 6



- Pull the hard drive up to remove.

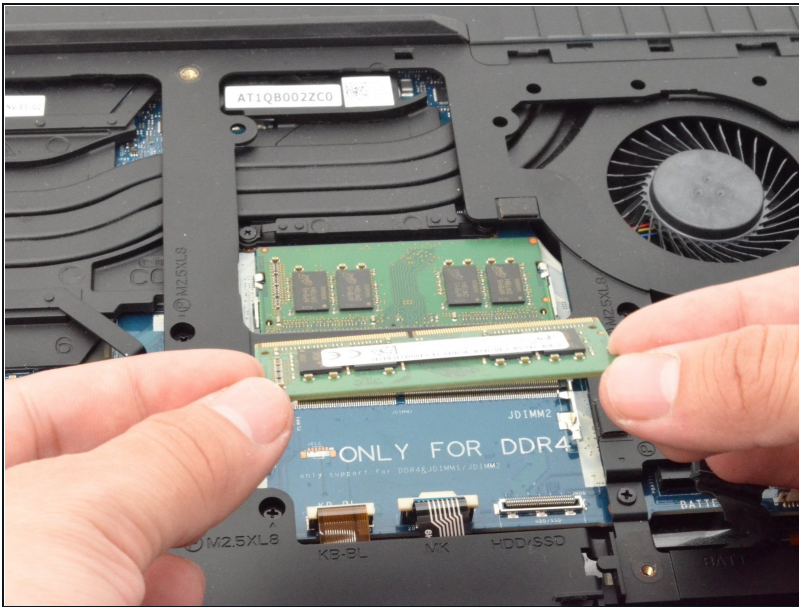
## Step 7 — RAM



- Move the metal sidings outward to release the RAM card.



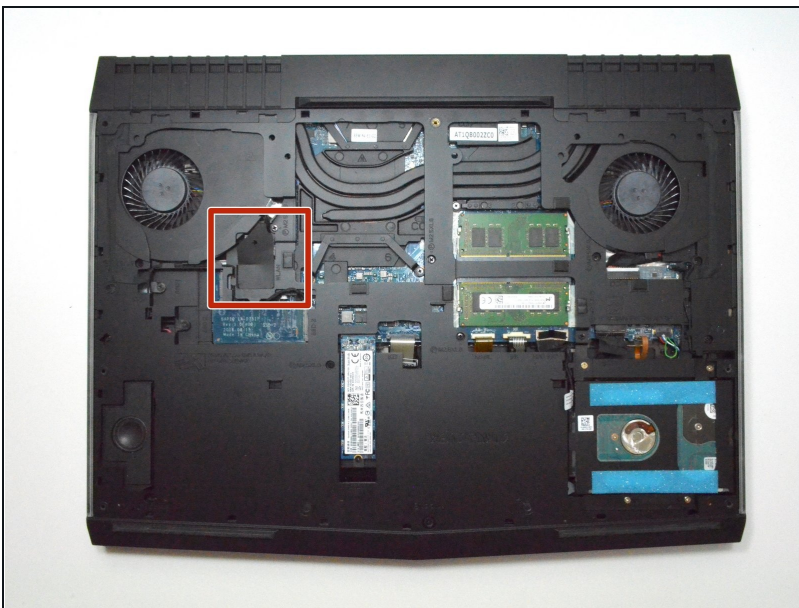
## Step 8



- Slide the RAM card out towards yourself to remove it.
- Repeat the same step for the RAM card above.

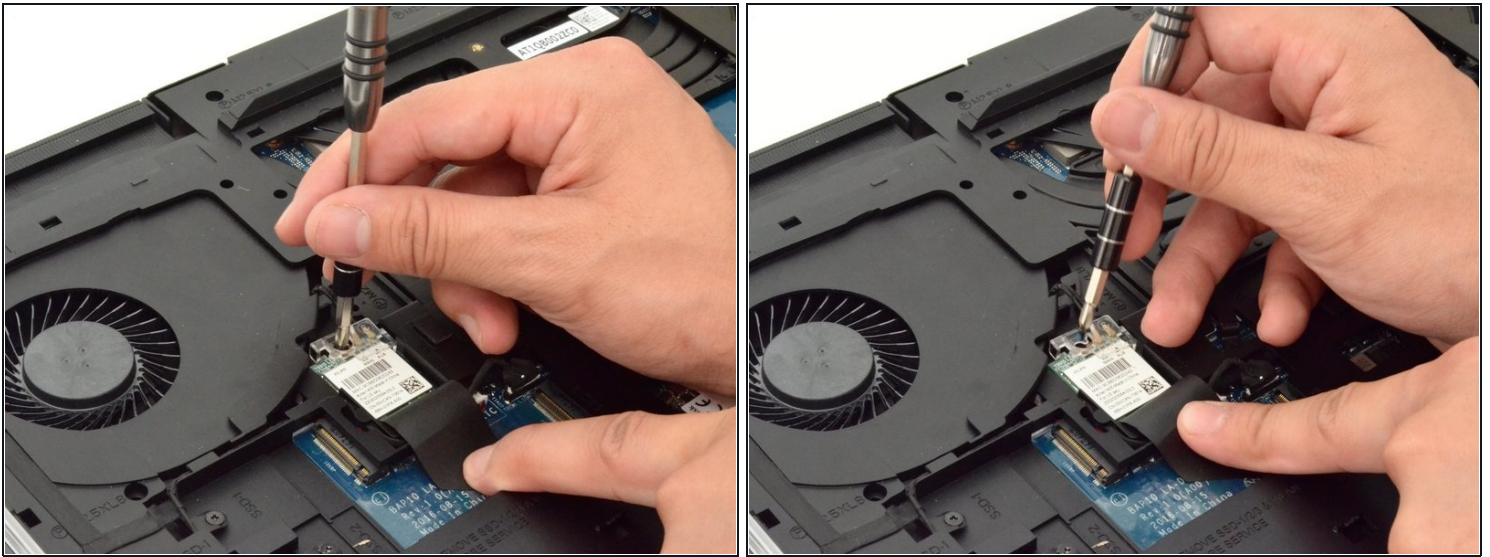
⚠ Slide the RAM card out carefully to avoid damaging it.

## Step 9 — Wi-Fi card



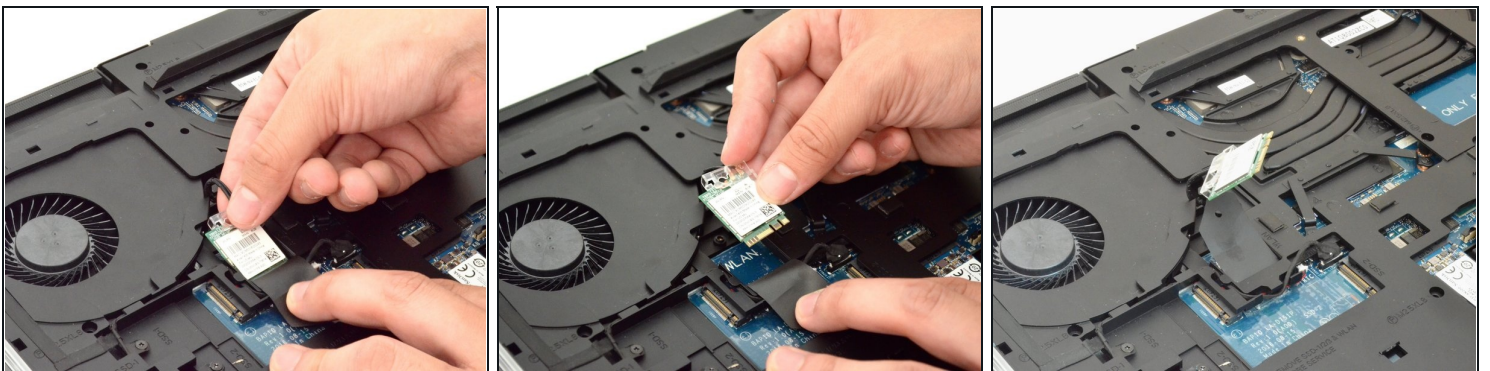
- Locate the WI-FI card.

## Step 10



- Peel back plastic cover of wi-fi card.
- Use a **PH1 screwdriver bit** and remove the **one M2x3 screw (1.9 mm)**

## Step 11

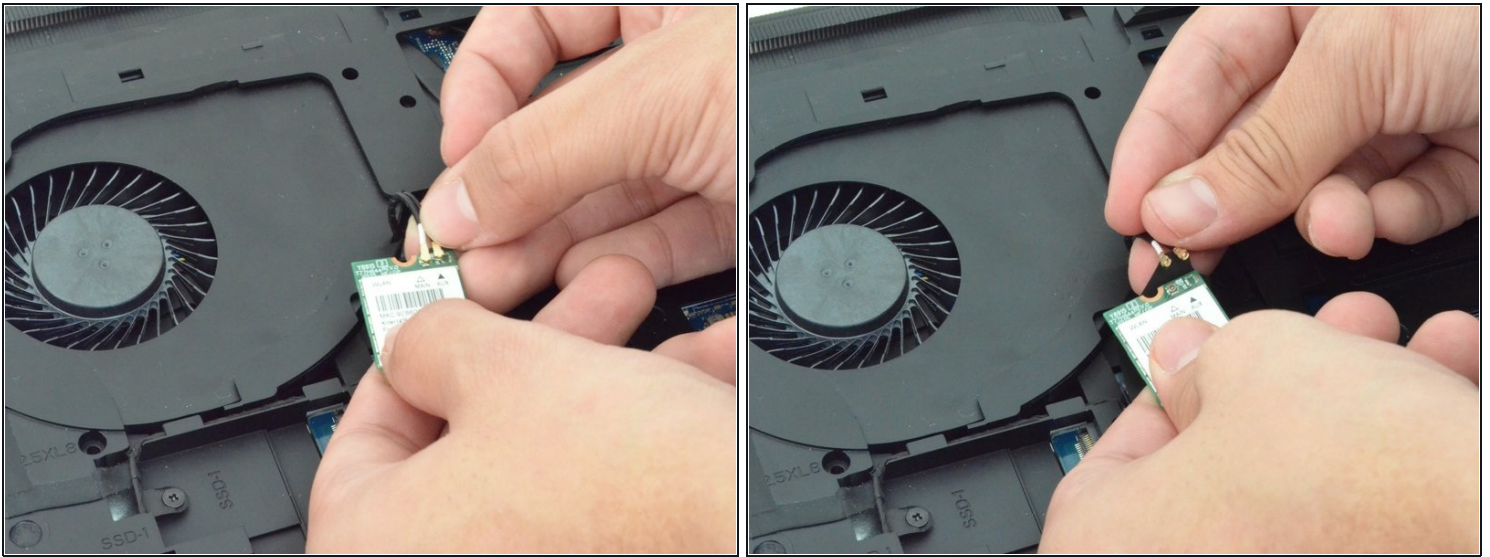


- **Gently** undo the clips attached to the wi-fi card.

⚠ If the clip is not gently removed it is possible that the entire base will be torn off the wi-fi card. You will need to purchase a new wi-fi card if this occurs.

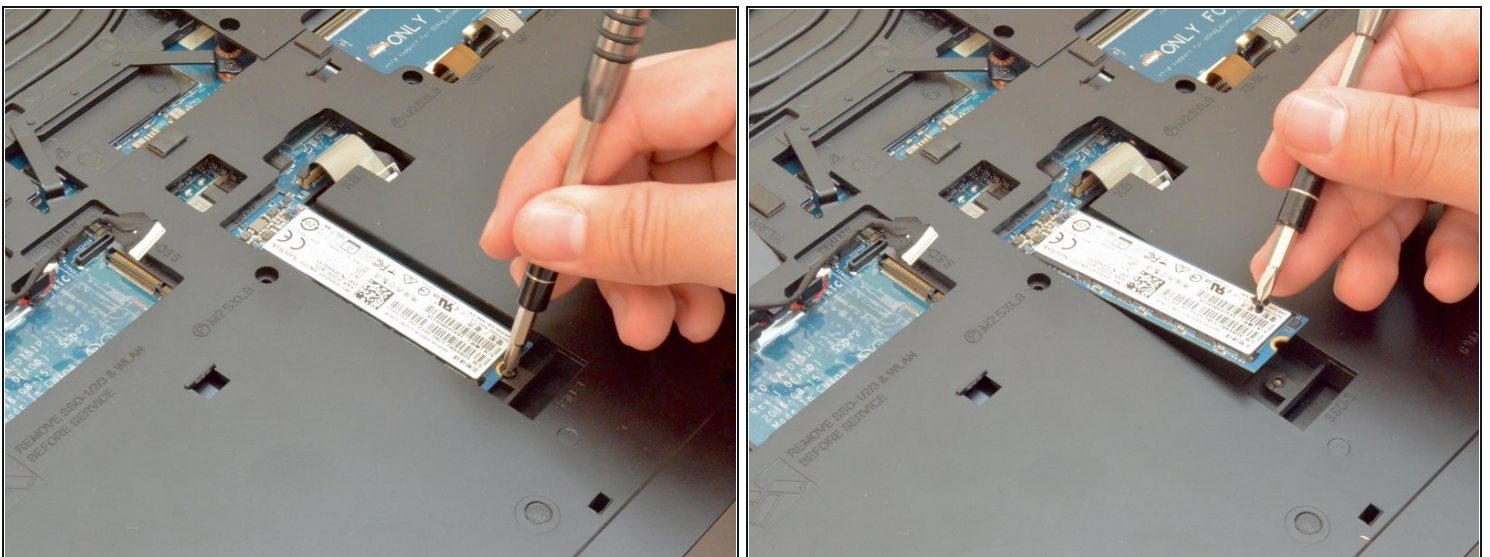


## Step 12



- Locate the cables that connect the wi-fi card.
- Gently pull upwards to remove cables and slide the wi-fi card out from its slot.

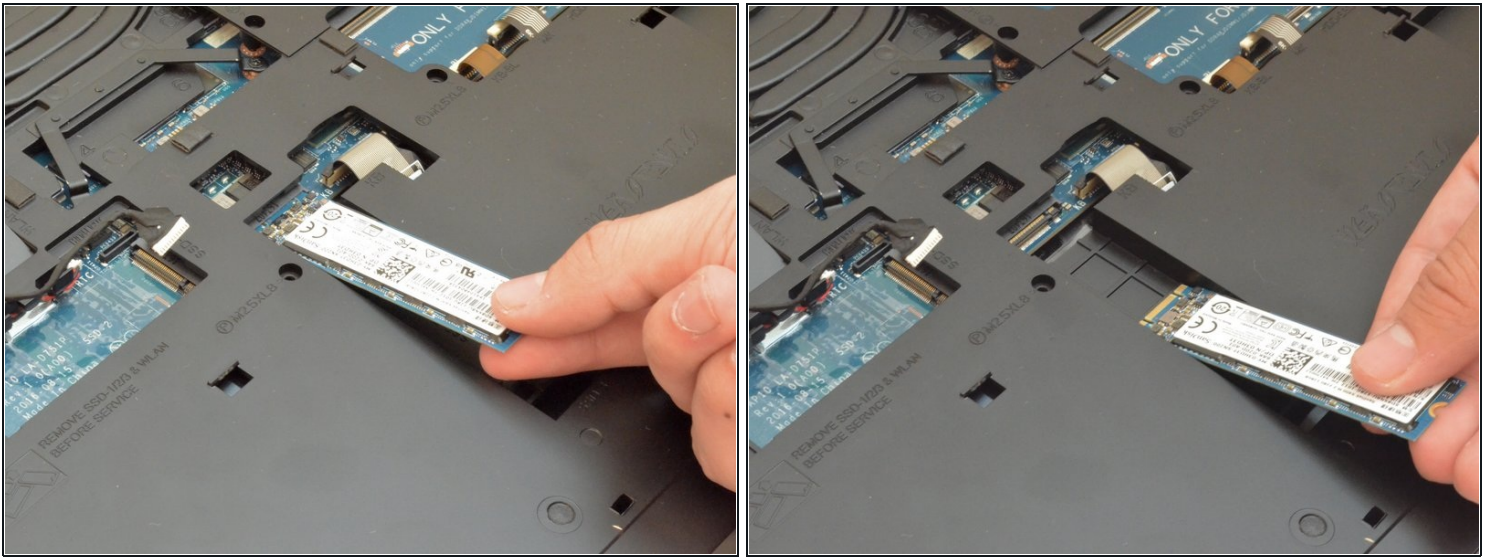
## Step 13 — Solid State Drive



- Remove the **one M2x3 screw (1.9 mm)** using a **PH1 screwdriver bit**



## Step 14



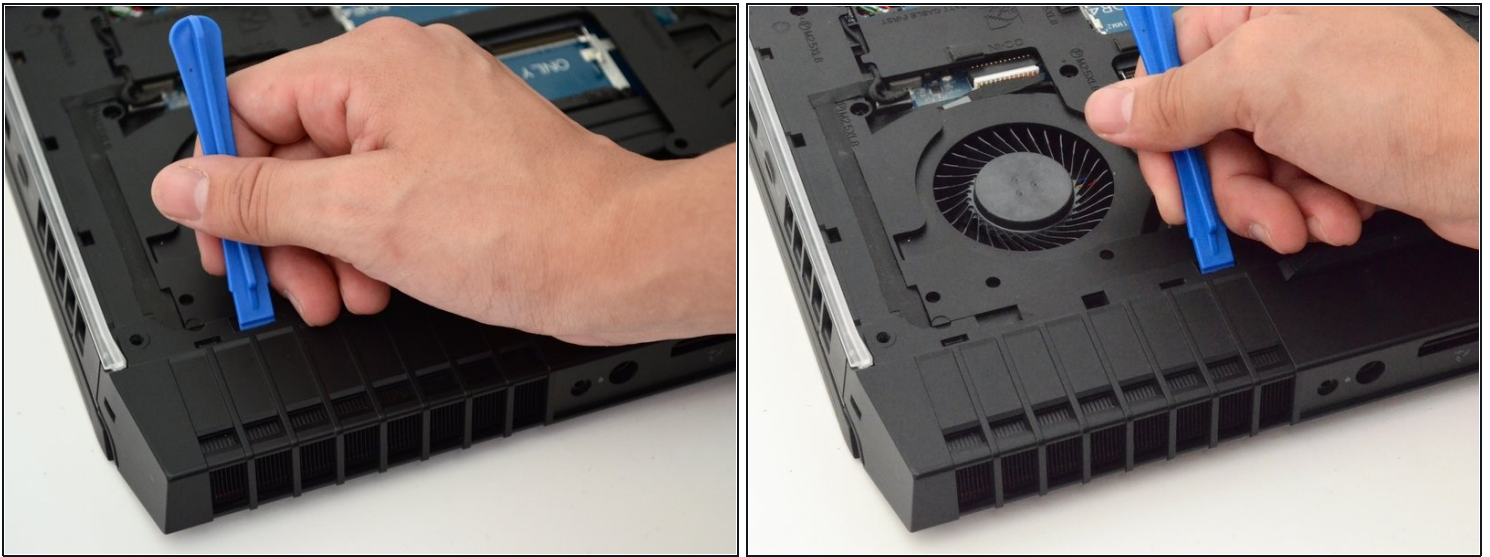
- Slide the solid state drive towards yourself to prevent damage to the card.

## Step 15 — Fan Shroud



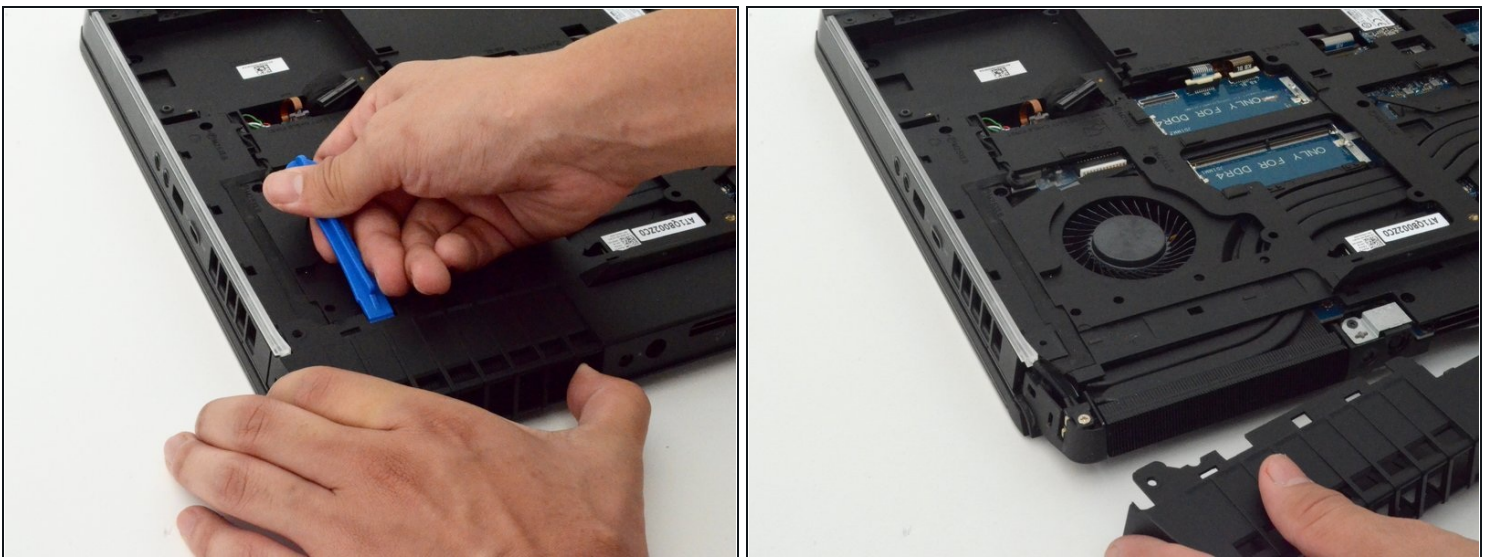
- Remove the **two M2.5x7 screws (2.44 mm)** located on the rear panel using a **PH1 screwdriver bit**.

## Step 16



- Insert the **plastic opening tool** under the fan shroud to slowly lift it up.
- Repeat process on the middle and opposite side.

## Step 17

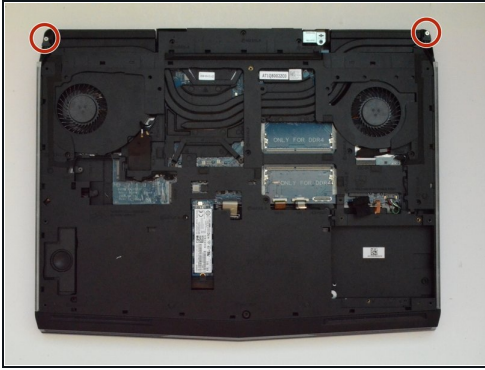


- Firmly lift the **plastic opening tool** and pull the fan shroud towards you.
- ⓘ This will take a large amount of force and will not come out easily the first time.

⚠ Careful not to tear out the piece causing damage to the fan shroud

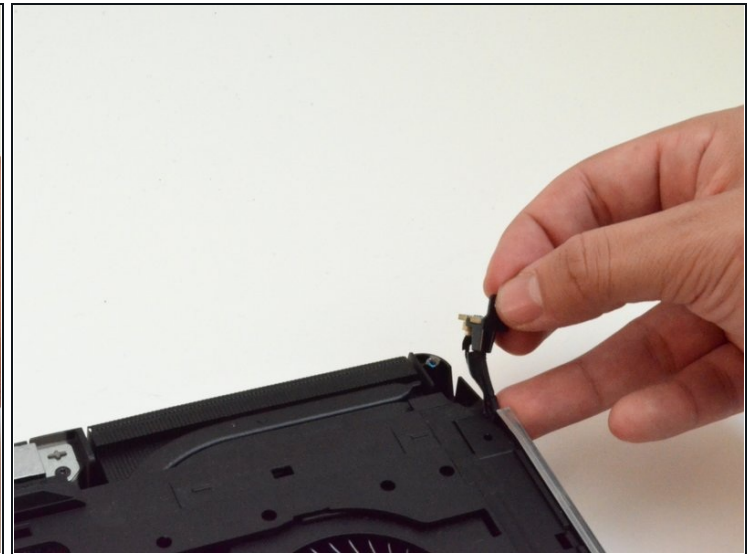
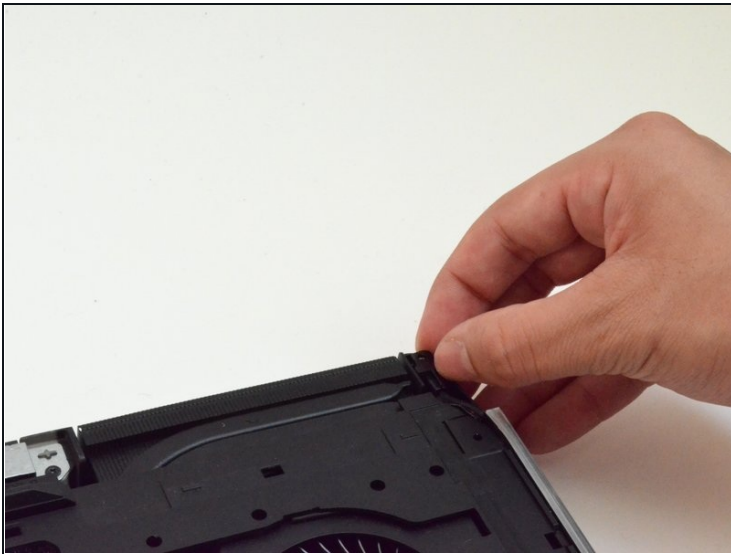


## Step 18 — Plastic Cover



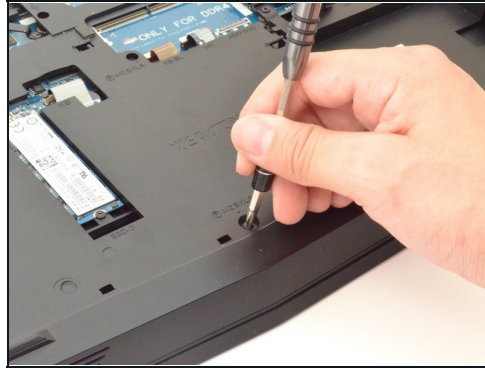
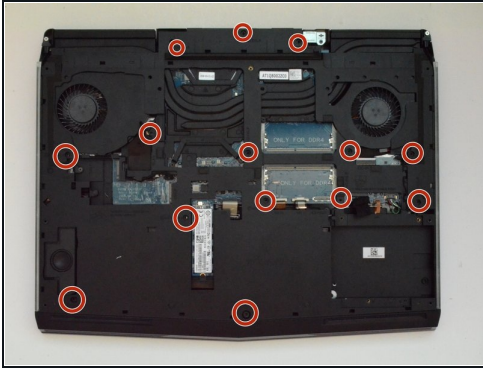
- Unscrew the **two M2x3 screws (1.9 mm)** at the top right and top left of the laptop that hold the tron lights in place.

## Step 19



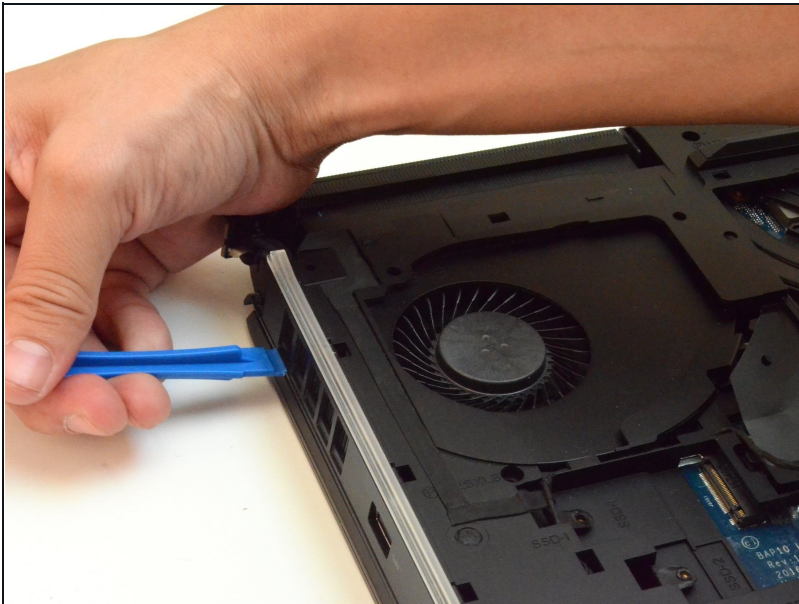
- Follow the wiring to unplug the tron lights.

## Step 20



- Remove the **fourteen M2.5XL8' screws (2.4 mm)** located in the plastic cover using the **PH1 screwdriver**.

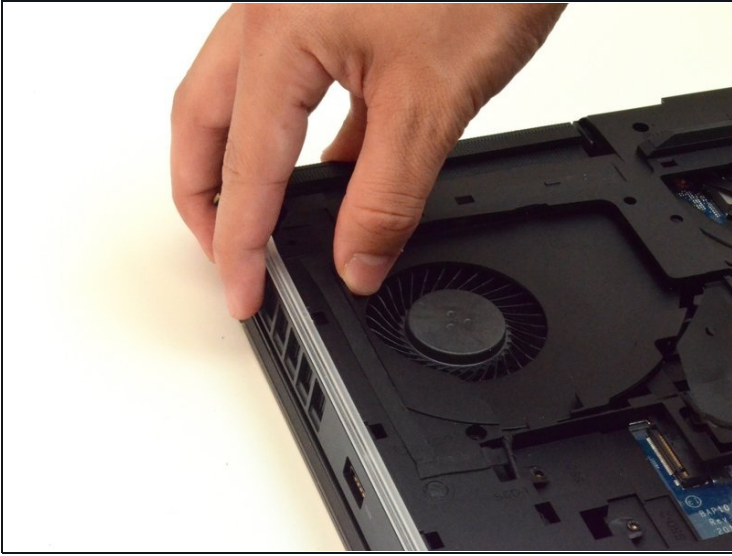
## Step 21



- Use the **plastic opening tool** to gently lift the sides of the cover.



## Step 22



- Slowly lift up the plastic cover.

---

To reassemble your device, follow these instructions in reverse order.