



# InFocus Screenplay 4805 Lens Replacement

Replace the lens if you are experiencing a lack...

Written By: Marilyn Urness



# INTRODUCTION

Replace the lens if you are experiencing a lack of an image when the projector is on.

You will need a replacement lens as well as a clean, micro fabric cloth in case the replacement lens needs to be cleaned.

---

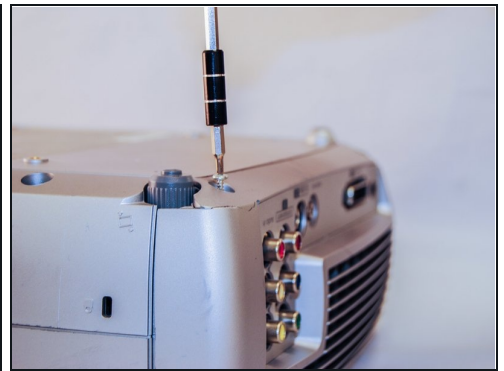
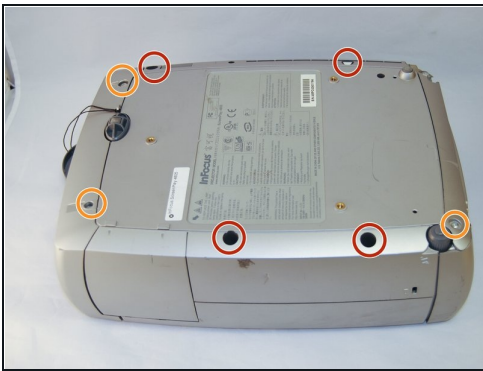
## TOOLS:

- Metal Spudger (1)
- Phillips #0 Screwdriver (1)
- Phillips #1 Screwdriver (1)
- Phillips #2 Screwdriver (1)

## PARTS:

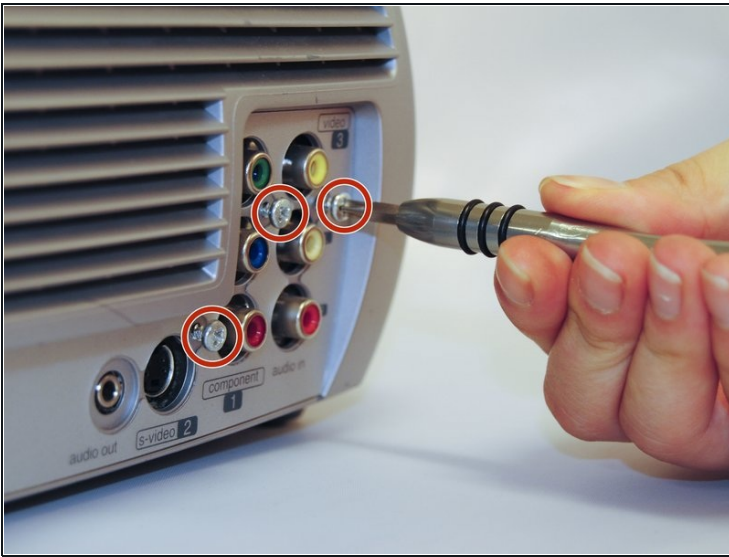
- Replacement Lens (1)
- 

### Step 1 — Top Panel



- Flip the projector on its back.
- Use the Phillips #2 screwdriver to remove the (4) four 2 cm gold screws.
- Use the Phillips #2 screwdriver to remove the (3) three 1 cm silver screws.

## Step 2



- Turn the projector, facing the back cable board towards you.
- Using the Phillips #0 screwdriver, remove the (3) three 1.0 cm silver screws on the back panel.
- Gently take off back cable panel.

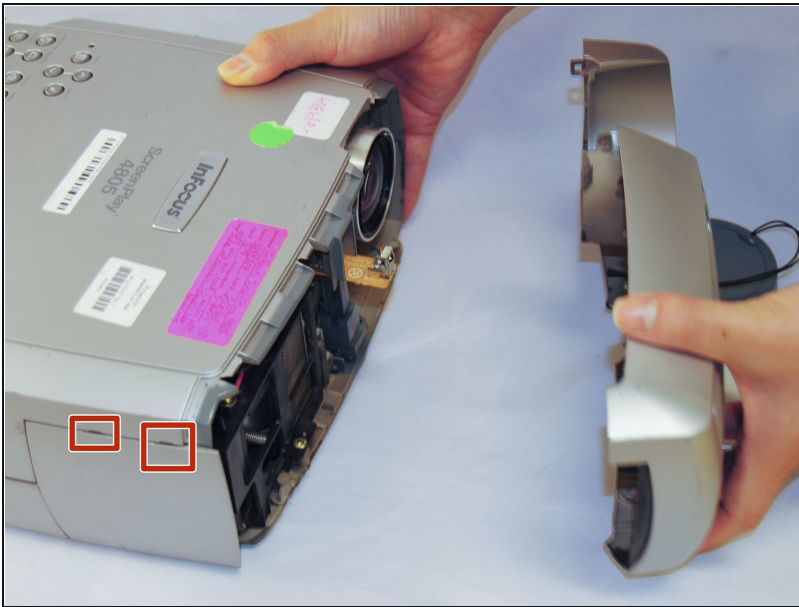
## Step 3



- Turn the projector so the front side with the lens is facing you.
- Gently pry the both of the grey lens rings using the metal spudger.

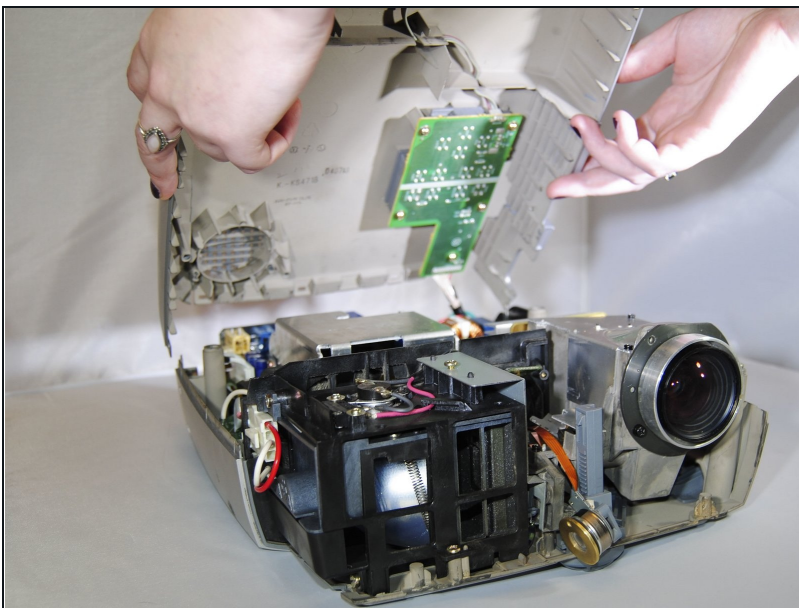


## Step 4



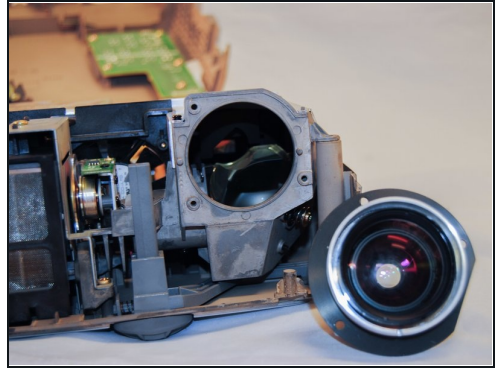
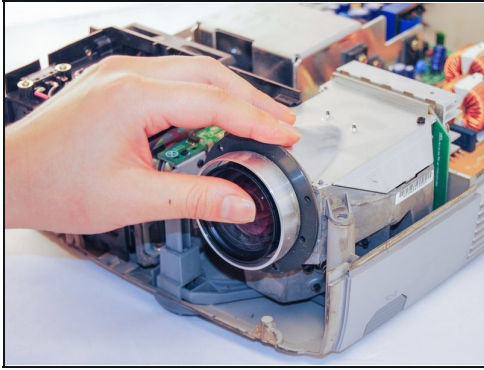
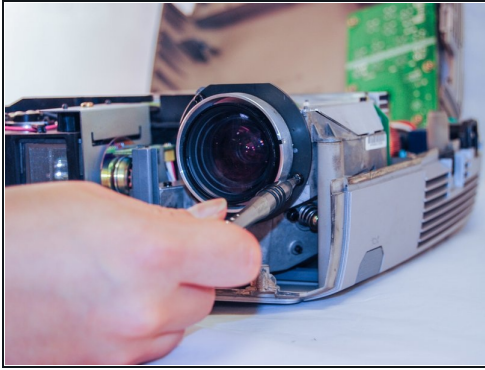
- Now that the screws have been removed, proceed with the removal of the outer panel.
- Gently remove the front lens panel.
- ⓘ Be forewarned, the panel will resist. Be careful not to break the lens.

## Step 5



- Being careful not to pull the wires inside the projector, gently lift the top panel off the projector.
- ⓘ Rest the lid behind the projector so the insides are exposed and undamaged.

## Step 6 — Lens



- Using the Phillips #1 screwdriver, remove the (3) three 1cm black screws on the face of the lens.
- Gently pull out the lens.

---

To reassemble the device, follow these instructions in reverse order.