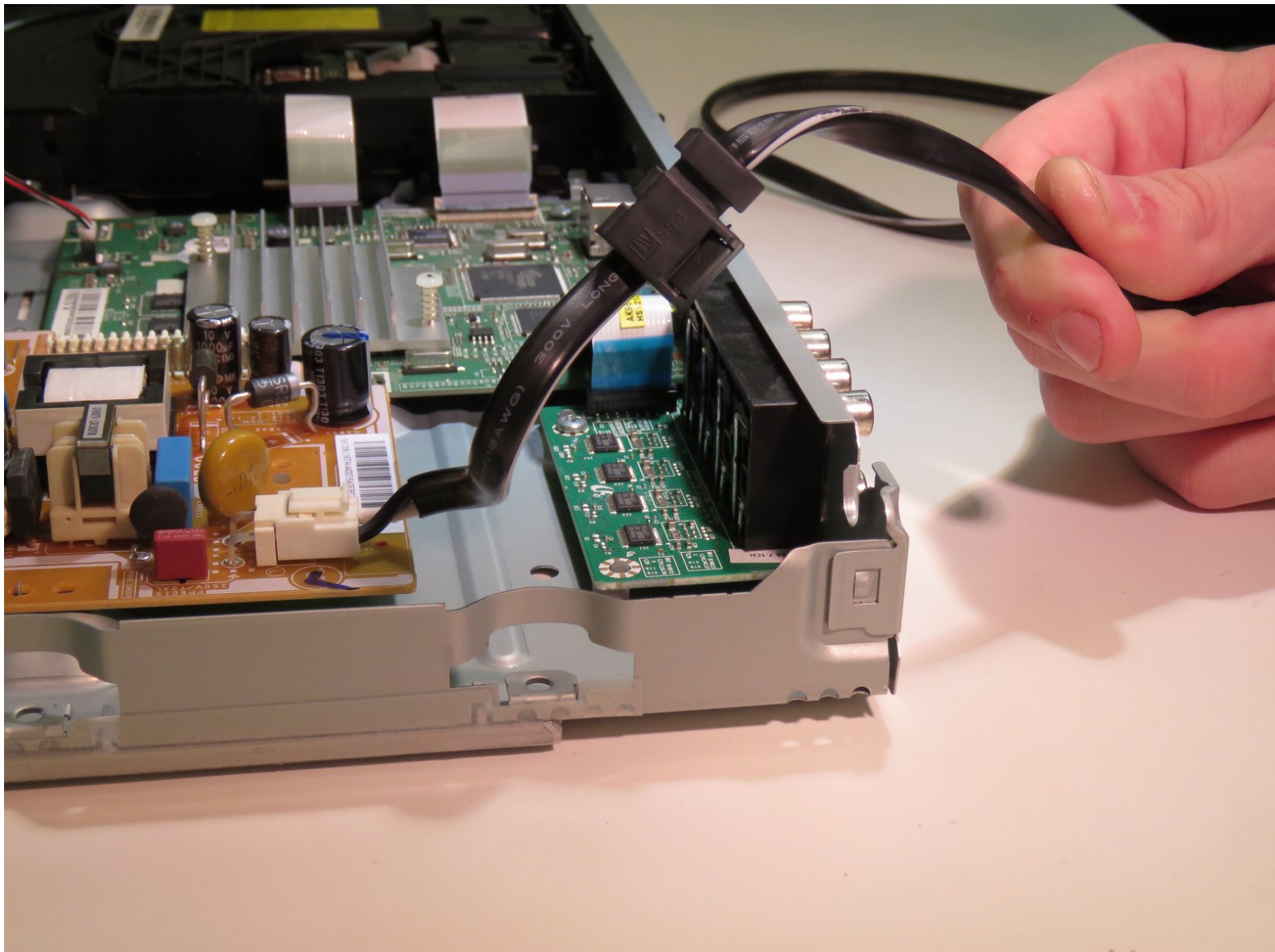




# Samsung BD-F7500 Blu-ray Player Power Cord Replacement

This guide will teach you how to replace the power cord.

Written By: James McMichael



## INTRODUCTION

Having trouble turning on your Blu-ray player? Dog chew through the power cord? This guide will help you replace the power cord.

---

### TOOLS:

- [Metal Spudger](#) (1)
  - [Phillips #1 Screwdriver](#) (1)
-

## Step 1 — Power Cord



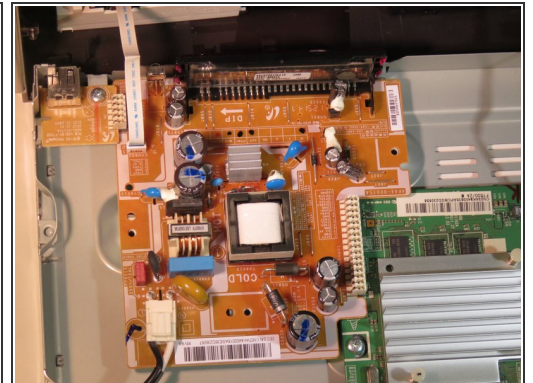
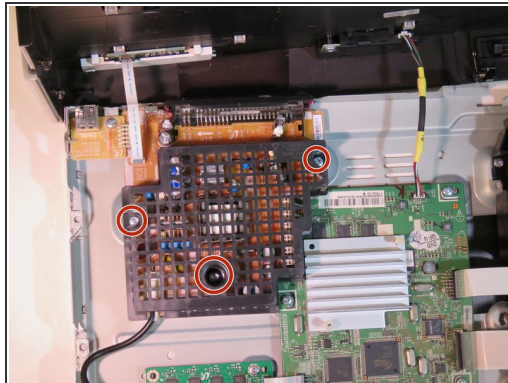
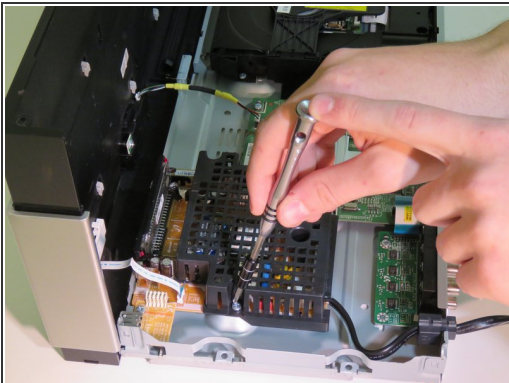
- Use a Phillips head #J1 screwdriver to remove all three (3) 10 mm screws.

## Step 2



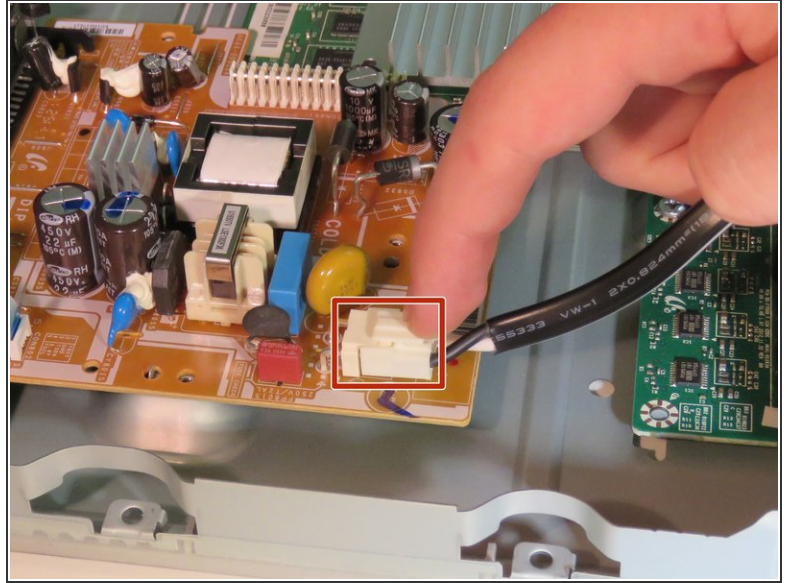
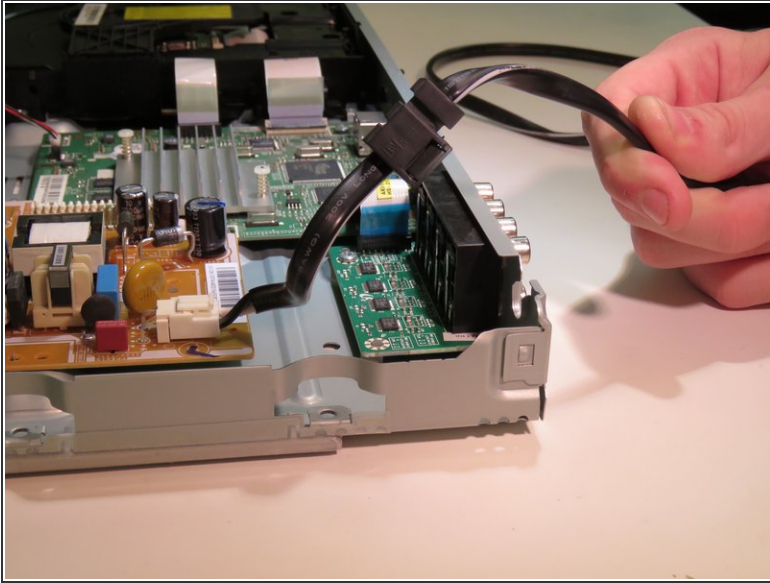
- While firmly gripping the gray, metal base, lift the black plastic cover off the device.
  - The case is clamped onto the edges of the device, so bending of the plastic top will be required. Don't be afraid to use some force, it is unlikely that it will break.
- ⚠ Be careful not to tear ribbon cables attached to the outer cover.

## Step 3



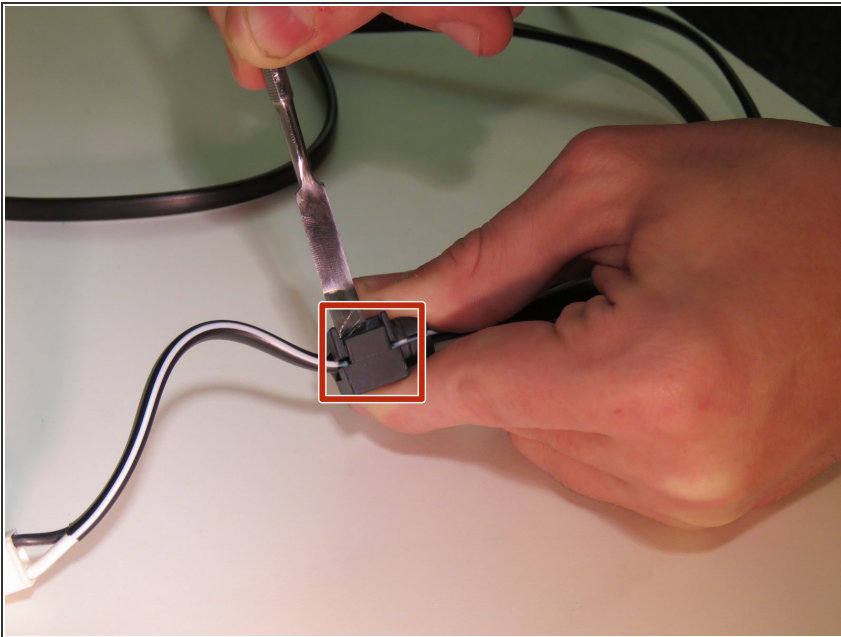
- Using the Philips head #J1 bit, remove the three (3) 10 mm screws that secure the plastic cover.
- Gently remove the plastic cover.

## Step 4



- To remove the power cord, gently apply pressure to the tab located at the base of the cord and lift the cord with your fingers.

## Step 5



- Locate the black plastic tab located on the power cord.
- Using a spudger, gently insert the tool into the crack, to allow space for the wire to slide out.
- Pull the plastic tab off of the wire, so that it can be placed on the replacement power cord.

To reassemble your device, follow these instructions in reverse order.

This document was generated on 2020-11-28 06:08:44 AM (MST).

