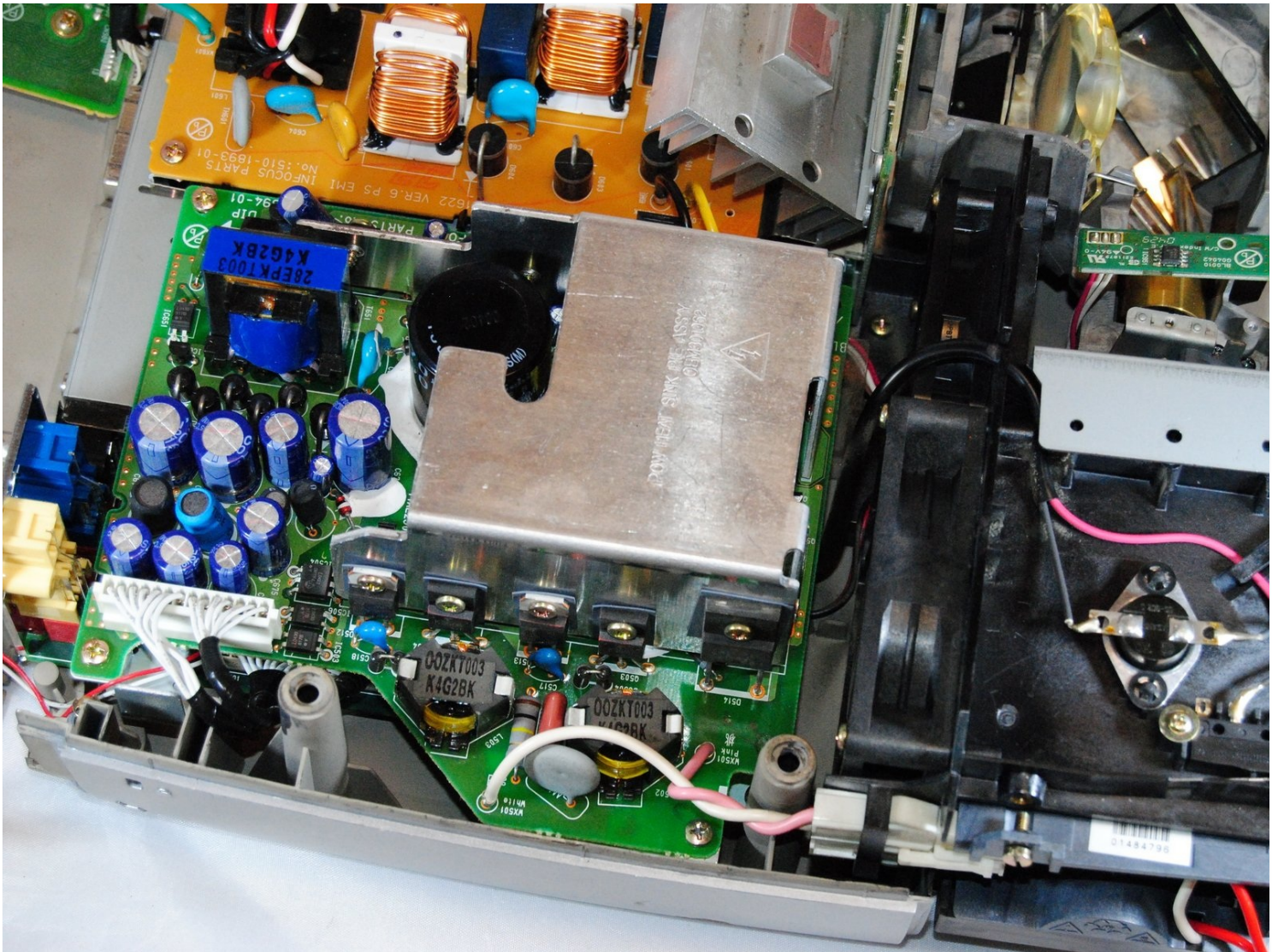




# InFocus Screenplay 4805 Motherboard Replacement

Replace the motherboard if experiencing sound a...

Written By: Marilyn Urness



# INTRODUCTION

Replace the motherboard if experiencing sound and power problems.

For this project you may need a can of compressed air to clean the insides of the projector. You may also want safety goggles.

---

## TOOLS:

T5 Torx Screwdriver (1)

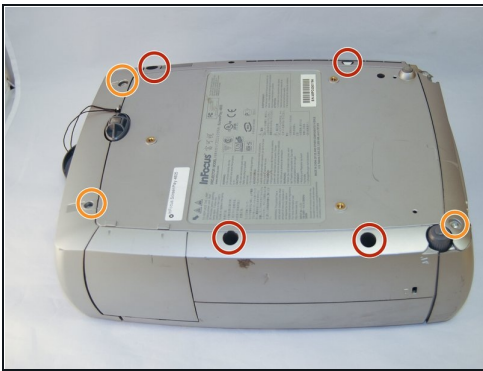
Metal Spudger (1)

## PARTS:

Motherboard Replacement (1)

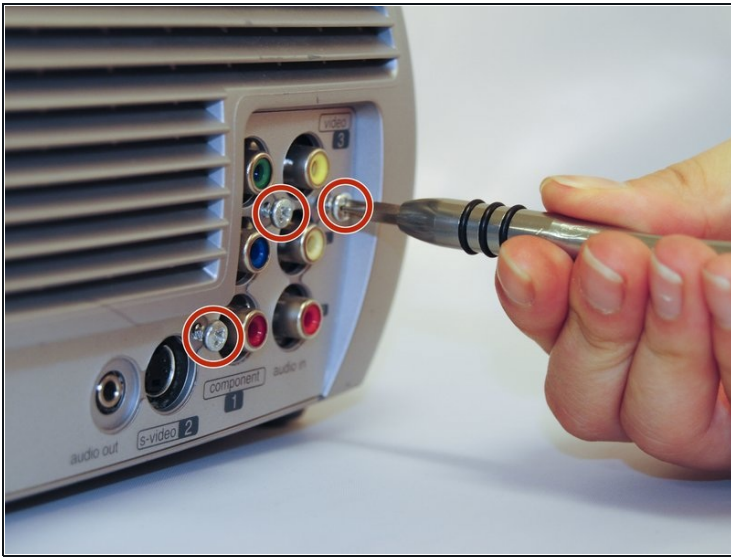
---

### Step 1 — Top Panel



- Flip the projector on its back.
- Use the Phillips #2 screwdriver to remove the (4) four 2 cm gold screws.
- Use the Phillips #2 screwdriver to remove the (3) three 1 cm silver screws.

## Step 2



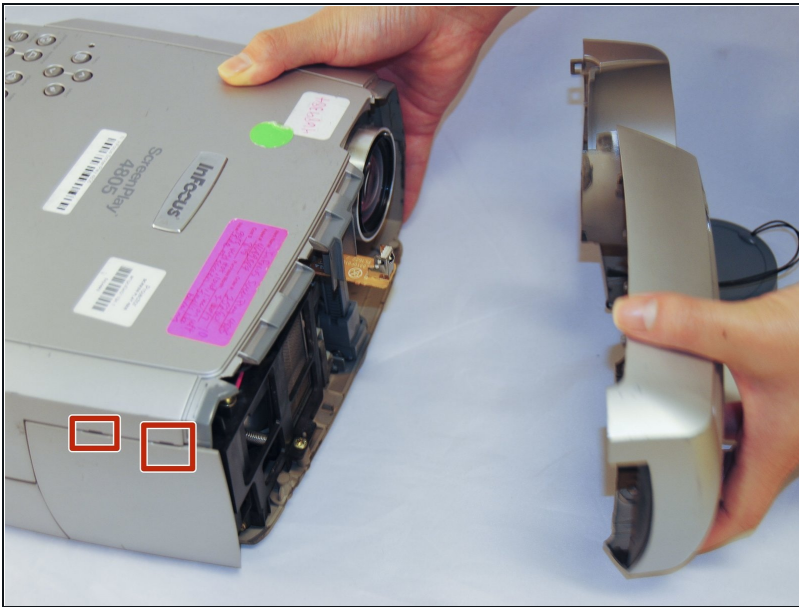
- Turn the projector, facing the back cable board towards you.
- Using the Phillips #0 screwdriver, remove the (3) three 1.0 cm silver screws on the back panel.
- Gently take off back cable panel.

## Step 3



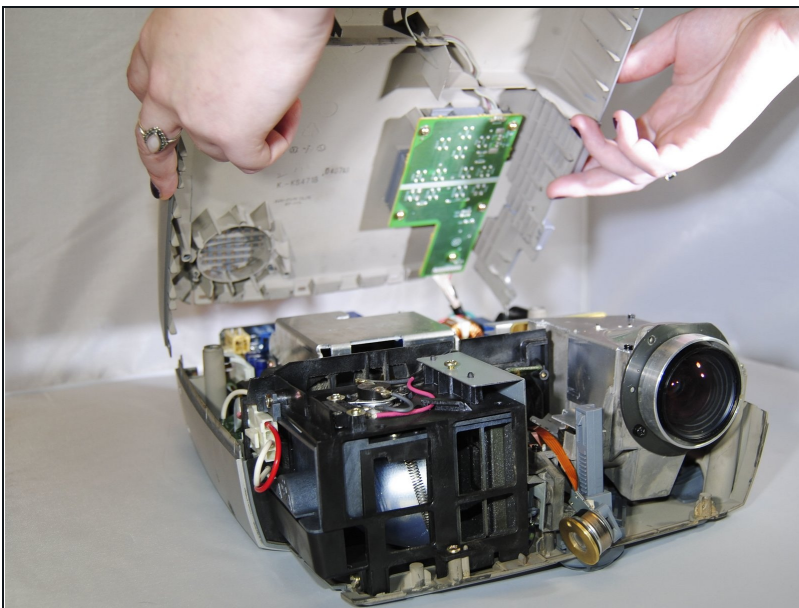
- Turn the projector so the front side with the lens is facing you.
- Gently pry the both of the grey lens rings using the metal spudger.

## Step 4



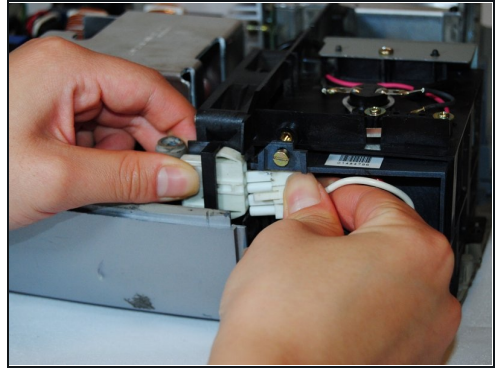
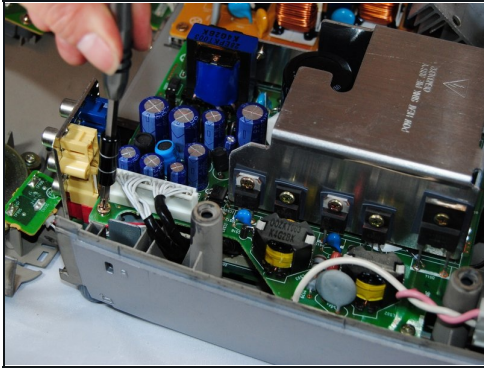
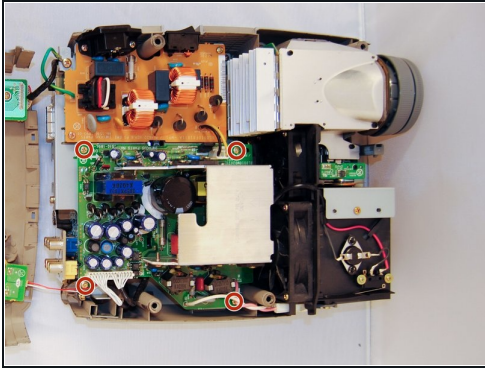
- Now that the screws have been removed, proceed with the removal of the outer panel.
- Gently remove the front lens panel.
- ⓘ Be forewarned, the panel will resist. Be careful not to break the lens.

## Step 5



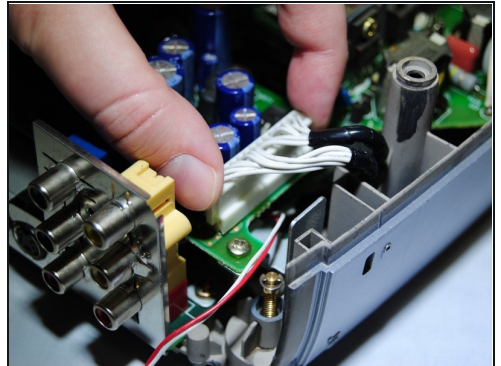
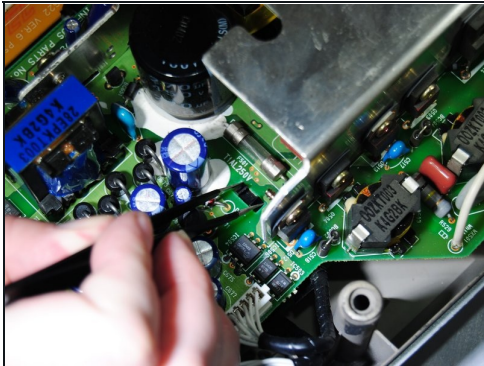
- Being careful not to pull the wires inside the projector, gently lift the top panel off the projector.
- ⓘ Rest the lid behind the projector so the insides are exposed and undamaged.

## Step 6 — Motherboard



- Using the Phillips #1 screwdriver, remove the (4) four 1.5 cm screws on each of the four corners of the motherboard cover.
- Remove the white tab connected to the light bulb.

## Step 7



- Gently pull the white tab on the right side of the silver power housing by pinching each side of it.
- Pinch the two black tabs on the inside of the cover to remove.
- Gently pull on the long white tab to remove it.

To reassemble your device, follow these instructions in reverse order.