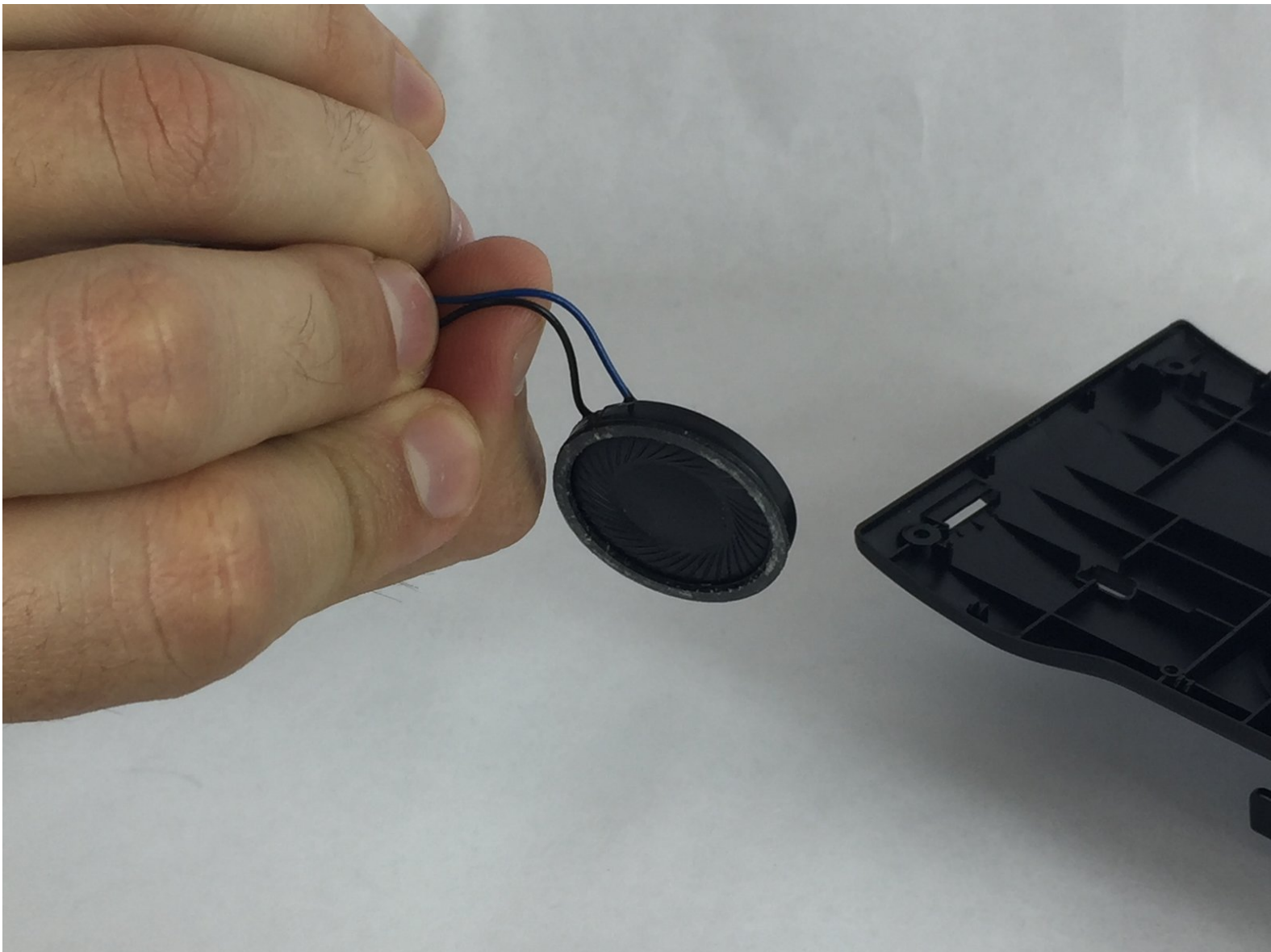




Garmin Nuvi 56LMT Speaker Replacement

This guide will show you how to replace the speaker for the Garmin nuvi 56lmt.

Written By: Dustin Saxon



INTRODUCTION

If you're having a problem with hearing your device and already determined that volume level was not the cause then this guide will show you how to change out the speaker.

TOOLS:

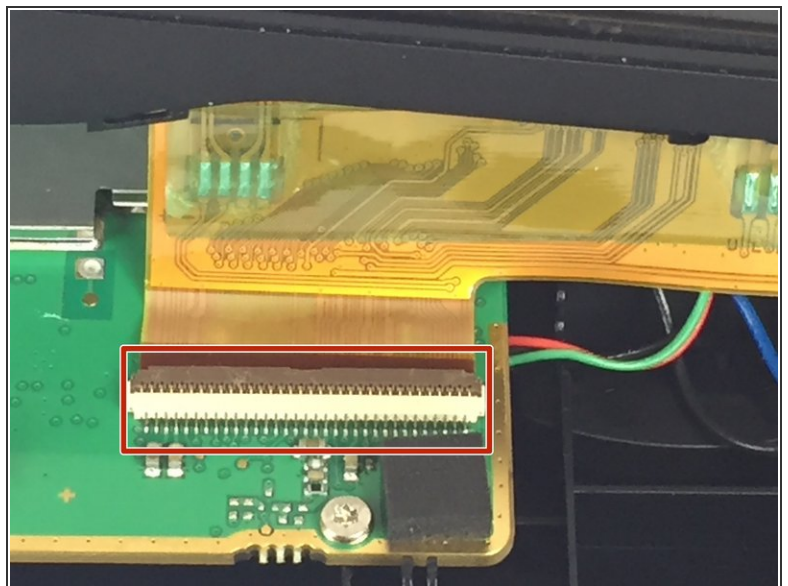
- [iFixit Opening Tools](#) (1)
 - [T5 Torx Screwdriver](#) (1)
 - [Wire Stripping/Crimping Tool](#) (1)
 - [Soldering Iron](#) (1)
-

Step 1 — Speaker



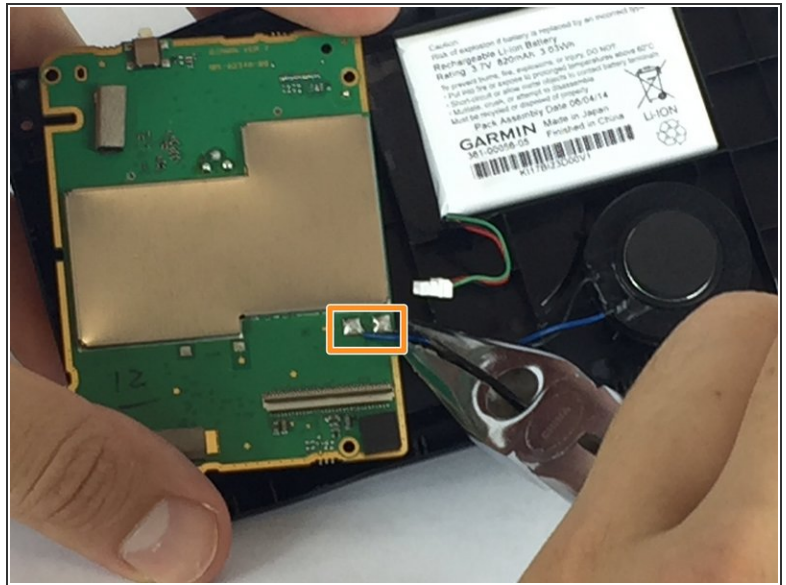
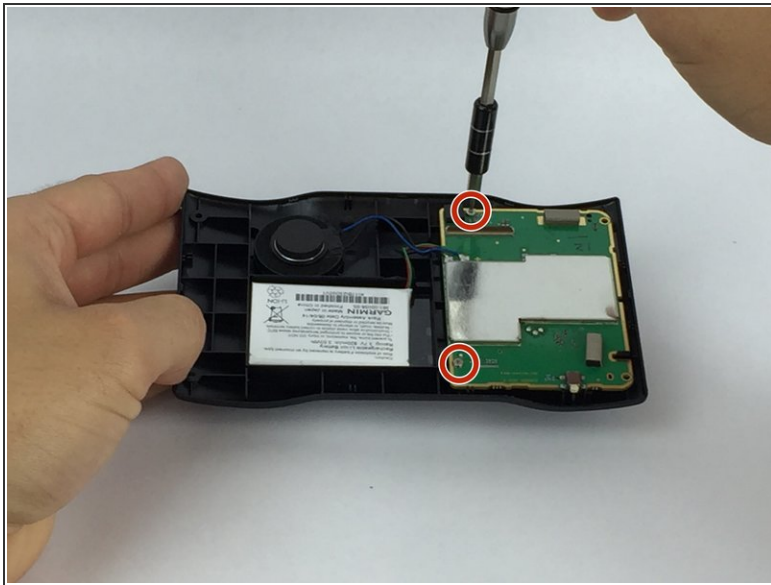
- ❗ Power off your Garmin Nuvi before disassembling.
- Use the T5 torx screwdriver to remove the four 11.0 mm screws.

Step 2



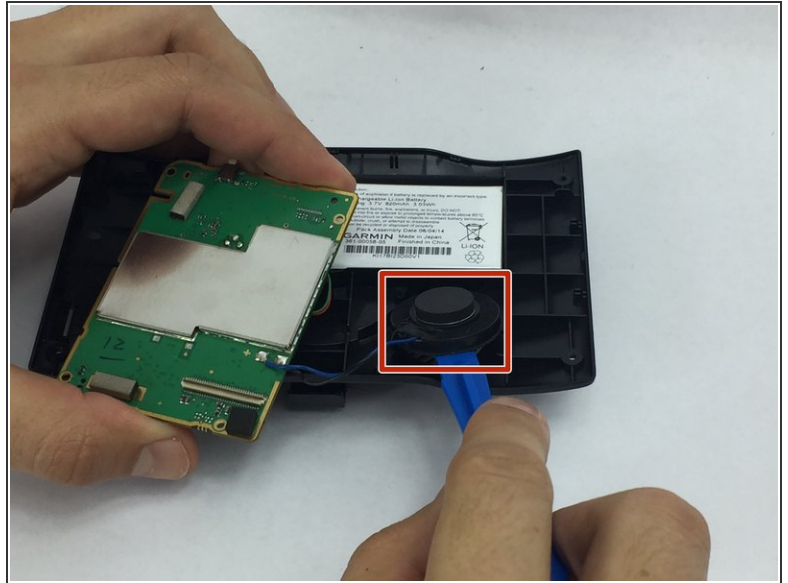
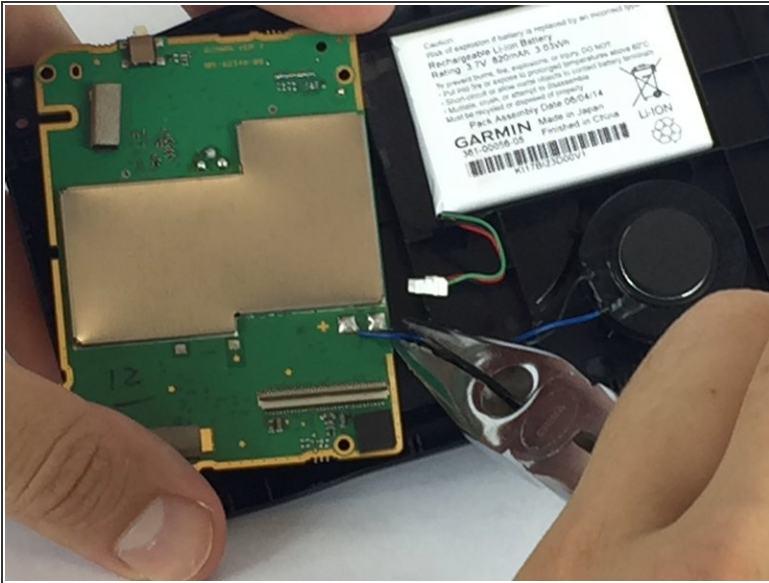
- locate the crevice between the front and back panel.
- Use the plastic opening tool to wedge the device open.
- Carefully disconnect the ribbon from the ZIF connector.

Step 3



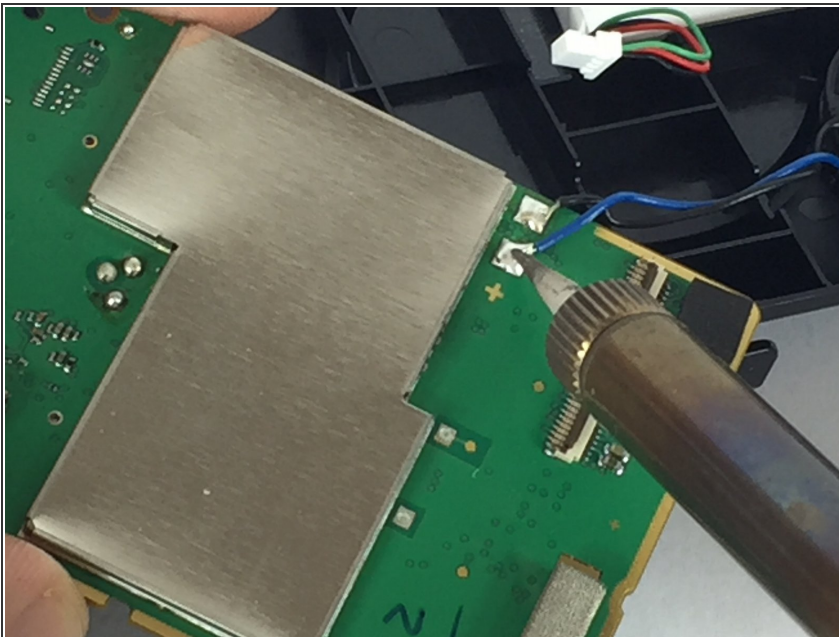
- Locate the two 5.0 mm screws and use the T5 Torx screwdriver to remove them.
- ⓘ These screws are easily lost so keep track of them.
- Once the screws are removed flip the motherboard over and locate the blue (+) and black (-) wires connected to the speaker.

Step 4



- Use the crimping tool to cut the wires from the motherboard.
- Use plastic opening tool or fingers to remove the speaker.

Step 5



- Replace speaker and solder the wires back to their original positions (Black negative and Blue positive).
[How To Solder and Desolder Connections](#)

To reassemble your device, follow these instructions in reverse order.