



Asus Chromebook C300MA-EDU Speaker Replacement

Written By: Christopher Hart



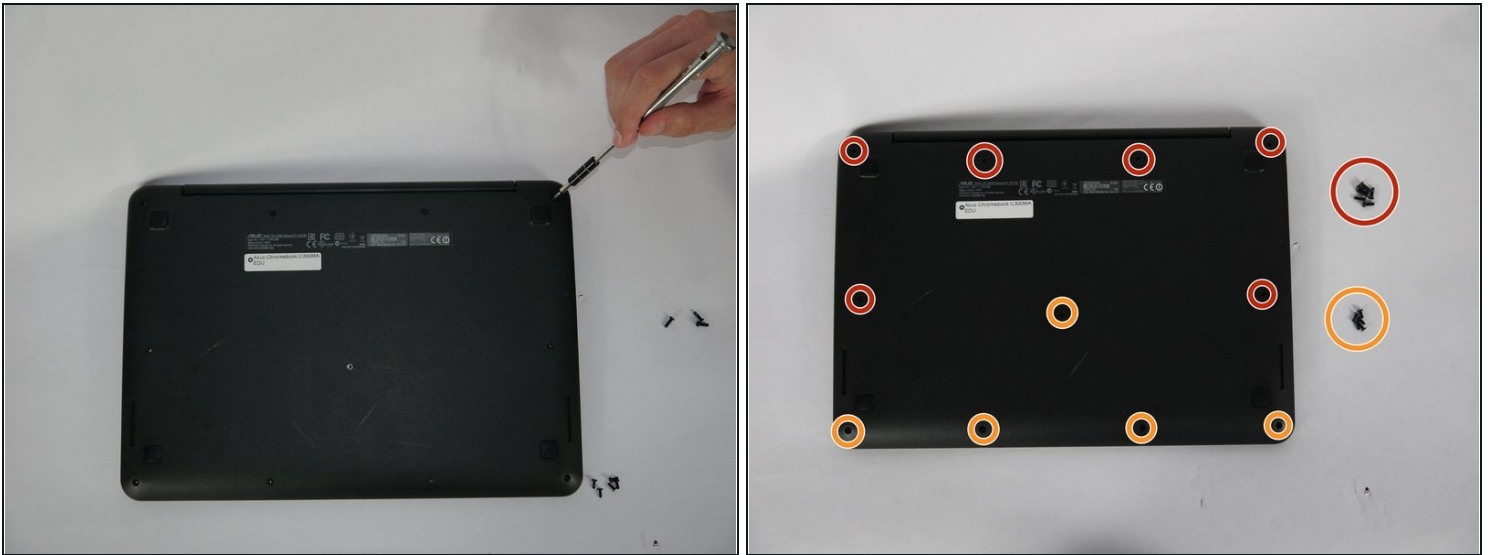
TOOLS:

[iFixit Opening Tool](#) (1)

[Spudger](#) (1)

[Phillips #00 Screwdriver](#) (1)

Step 1 — Keyboard



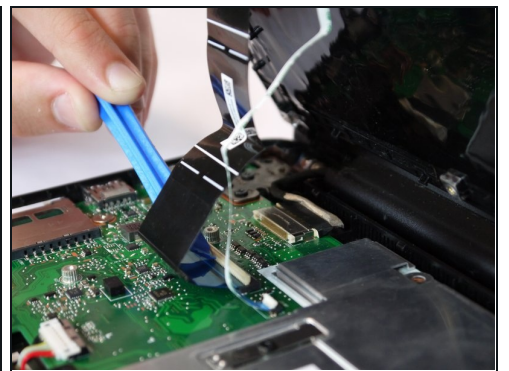
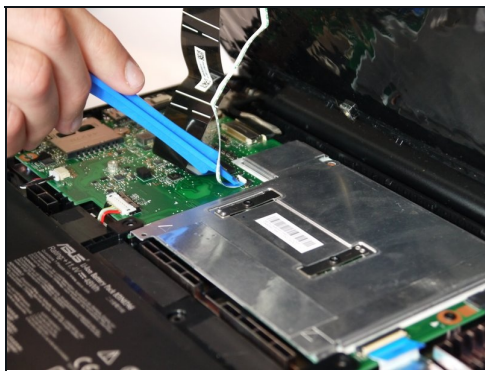
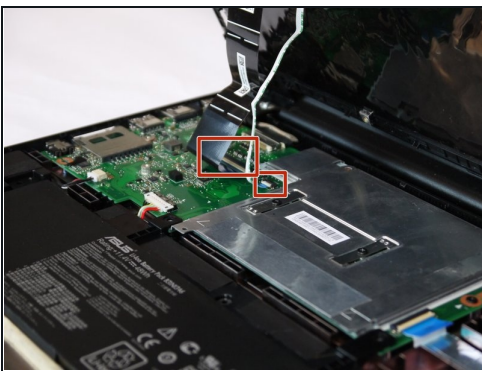
- Flip the Chromebook onto its back, where there are eleven screws.
- There are two variations of screws on the back panel:
 - Six 8.7mm screws.
 - Five 6.4mm screws.
- Using your screwdriver with the J00 Phillips Head tip, remove the screws by turning them counter clockwise.

Step 2



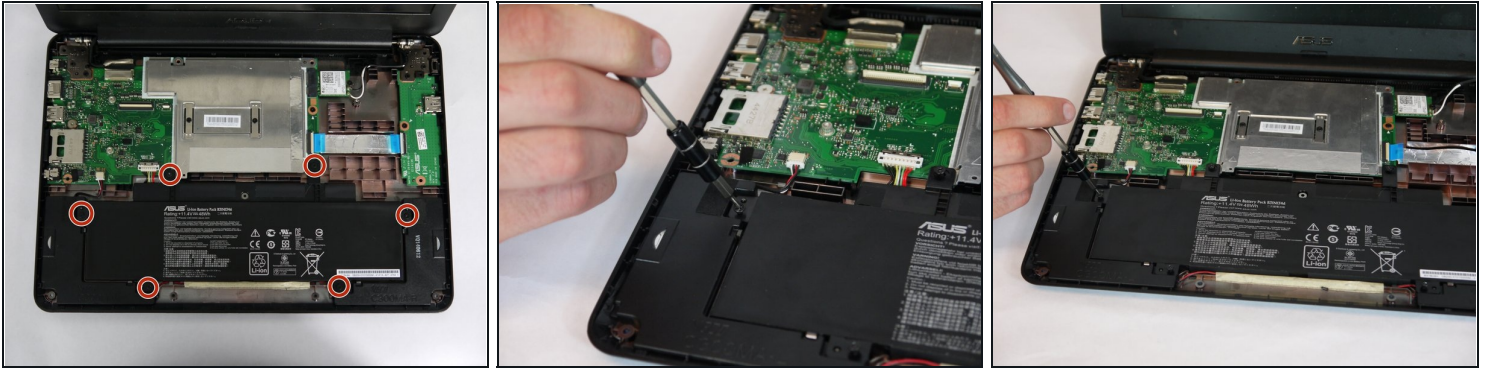
- Once the screws are removed, flip the Chromebook back over.
- Gently remove the keyboard by starting to lift up on one corner with a plastic opening tool.
- Follow around the brim of the keyboard until it pops off.

Step 3



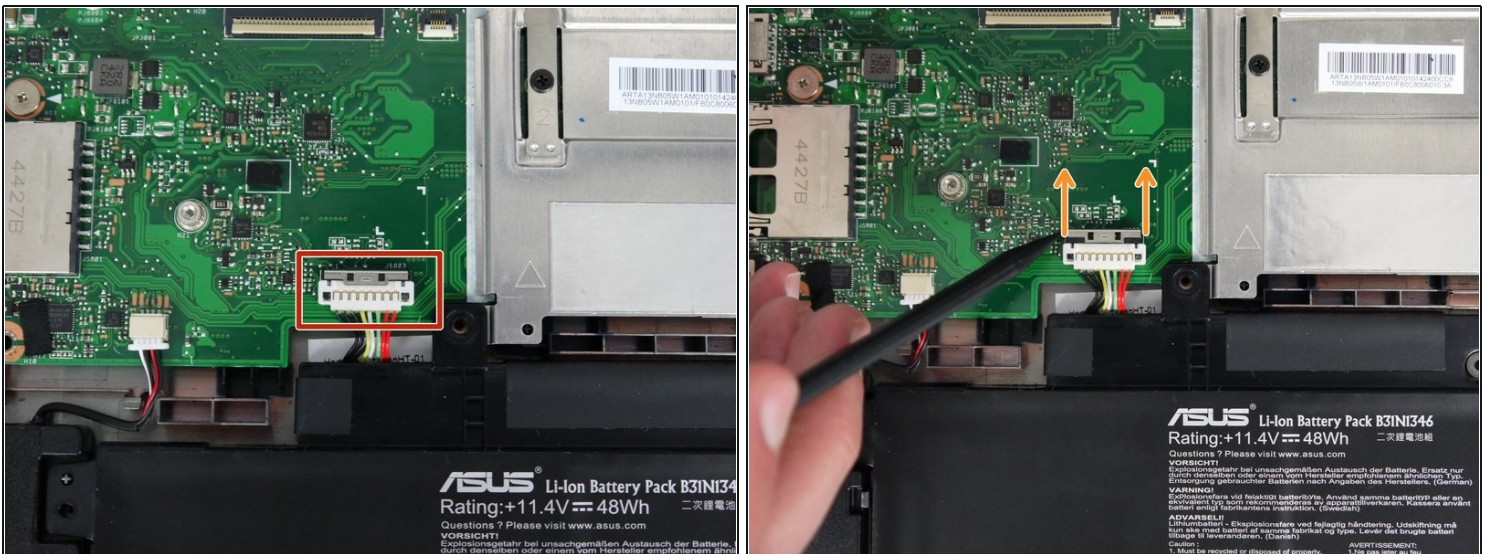
- Once you remove the keyboard, it will be connected to the CPU with two tabbed connections.
- Release the connections from the tabs gently by flipping the white flaps up until disconnected.
- You can now pull the ribbons out from the board and remove the keyboard.

Step 4 — Battery



- Once the keyboard is removed, the battery is located on the bottom portion of the shell.
- The battery is held in with six 6.5mm screws on opposing sides.

Step 5



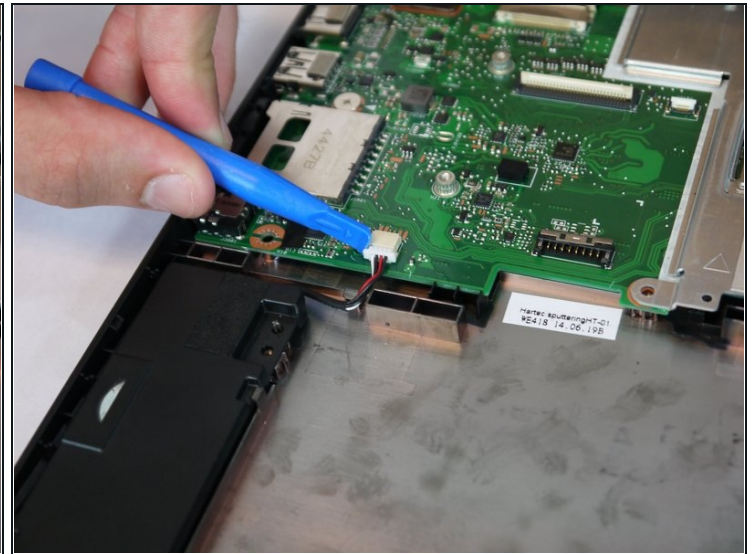
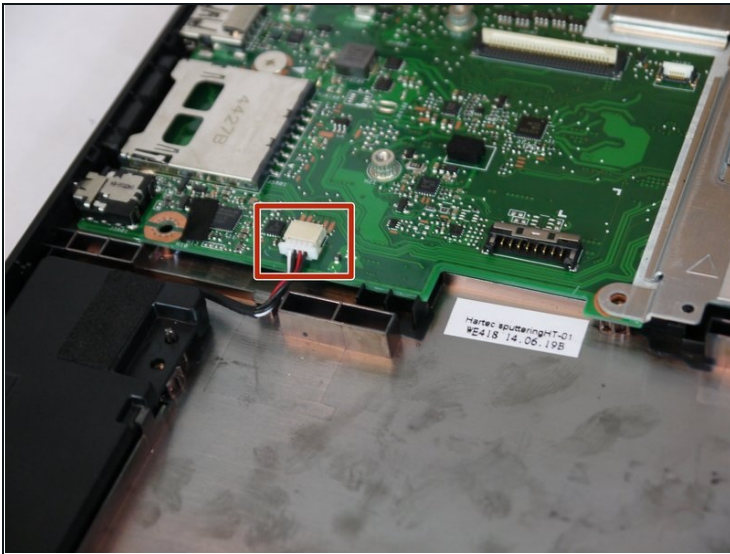
- The battery is now held in with a tabbed connection to the CPU on the left side of the board. On the tabbed connection, there is a silver plate.
- Gently push on the silver plate towards the screen until the plastic connection is free.
- The tabbed connection should now slide out backwards.

Step 6



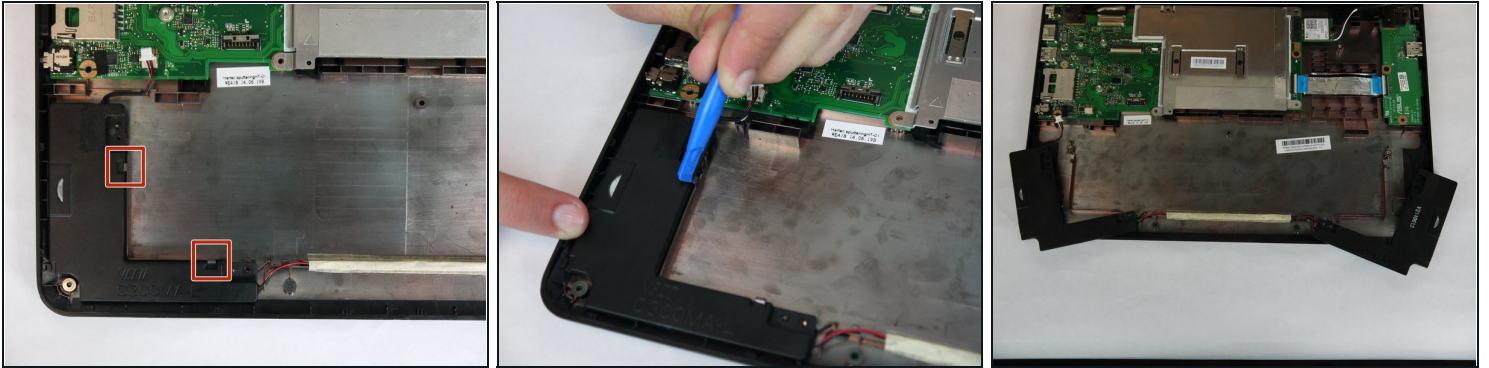
- At this point, using the plastic removal tool, lift the battery out of the shell.

Step 7 — Speaker



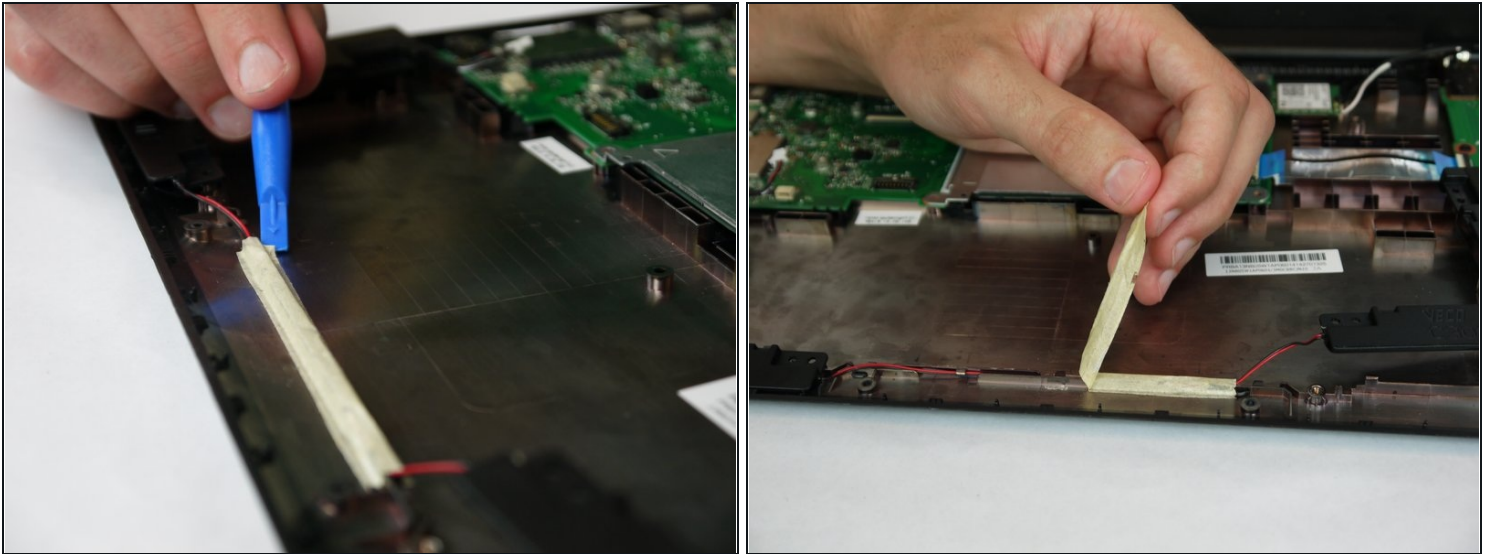
- The speakers are connected to the CPU via a tabbed connection.
- Using a smaller plastic spudger, gently pull backwards on the plastic clip until it comes loose.

Step 8



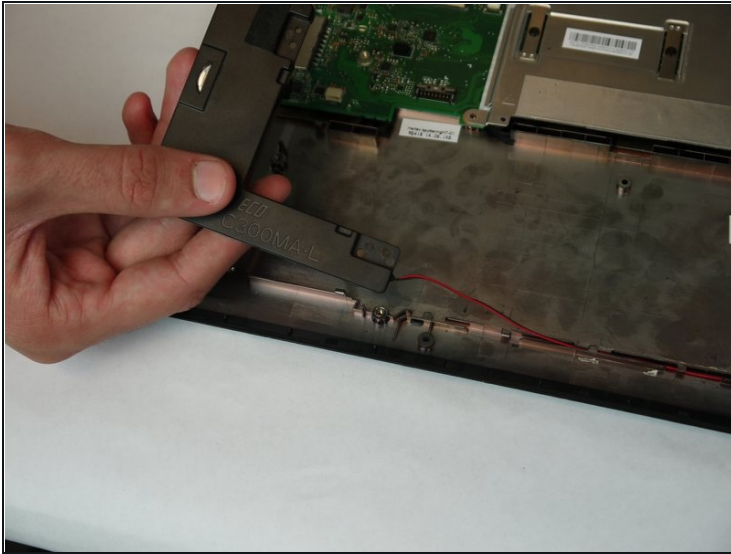
- Next, the speaker is incorporated into two plastic clips which are in the shell of the Chromebook.
- Using a smaller plastic spudger, gently pull upward on the plastic clips from the outer edge of the speaker unit.

Step 9



- After taking off the speaker unit from both sides, remove the tape holding down the central wiring in the middle of the Chromebook's shell.
- Using a plastic opening tool or spudger, slide the tool underneath a corner of tape and run the tool until the tape is removed.

Step 10



- Gently slide the wire out from its casing.
- The speaker is now disconnected safely.

To reassemble your device, follow these instructions in reverse order.