



DeLonghi ESAM xxxx - (Different Types)

Pressure Regulator Installation

The installation of a pressure regulating valve...

Written By: VauWeh



INTRODUCTION

The installation of a pressure regulating valve makes the machine much quieter.

Note: in the guide the top cover of the coffee maker was also removed. If you have no other repairs, this is not absolutely necessary and you can skip the corresponding steps.



TOOLS:

- [Kreuzschlitzschraubendreher PH 2](#) (1)
- [Curved Needle Nose Pliers](#) (1)



PARTS:

- [New Item](#) (1)
- [New Item](#) (1)

Step 1 — Preparations



 Pull the plug!

- Remove the drip tray, the water tank and the pulp container.

Step 2 — Unscrew the rear panel



- The rear panel and side panels are attached with six phillips screws #2. Screw them out.

Step 3 — Remove right side panel



- Slide the right side panel about 2 cm to the back.
- Then solve it.

Step 4 — Remove left side panel



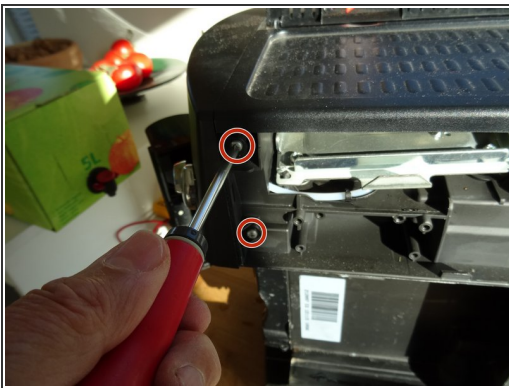
- The left side is a bit stuck. Place a plastic opening tool in the gap between the front and left side panel above the opening for the water tank. Lift the gap slightly larger.
- Then place the tool in the gap between the front and left side panel under the opening for the water tank. Increase the gap and push the side part about 2 cm to the rear.
- Lift out the left side piece.

Step 5 — Remove rear panel



- Take out the rear panel.

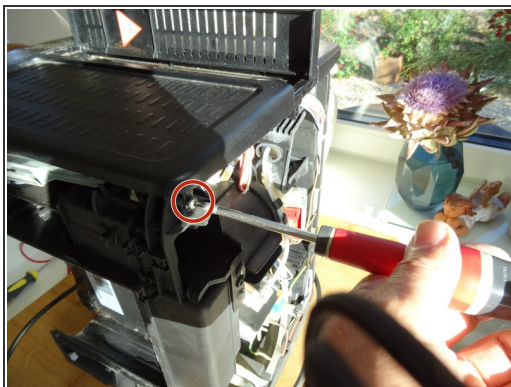
Step 6 — Unscrew top cover



- The front panel is secured with four PH2 Phillips screws, two left and one right each. Turn it out.
- Use a plastic opening tool to lever off the steam tap.
- Carefully pull the front panel about 1 cm forward so that there is a gap between the top cover and the front panel,

⚠ Do not pull the front panel too far, it is still attached with different hoses and cables.

Step 7 — Remove top cover



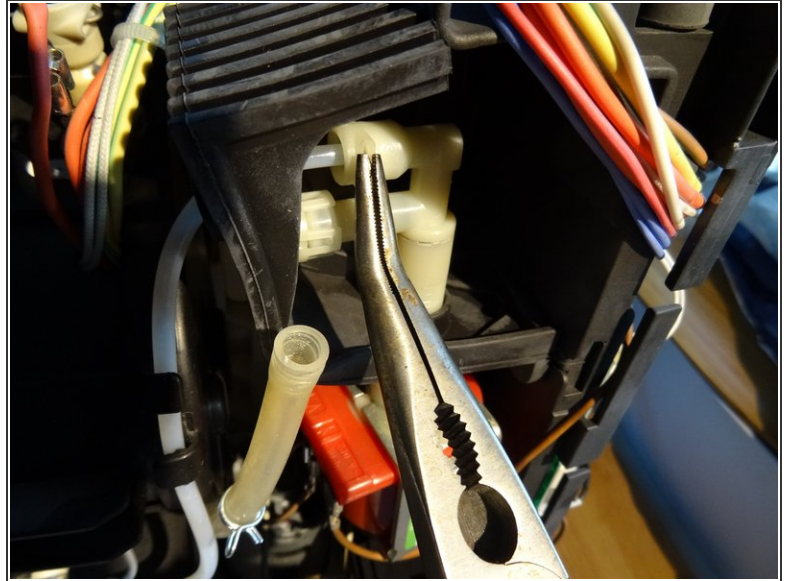
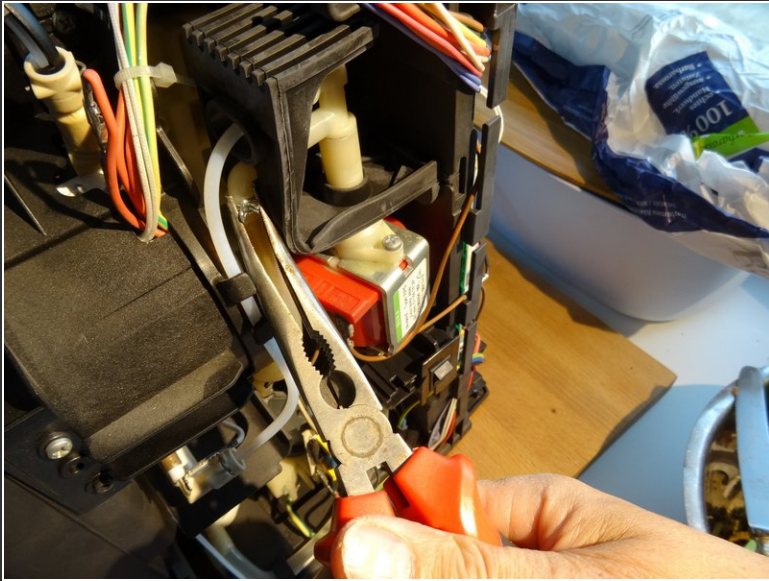
- Two Phillips screws PH2 hold the lid at the back. Turn it out.
- Lift the lid upwards.

Step 8 — pressure regulator



- The old safety valve - seen in the first photo already expanded - is screwed on the pump. It is replaced by a combination of safety valve and pressure balance valve. The diaphragm valve dampens the shocks of the pump, making the flow of water quieter and quieter.

Step 9



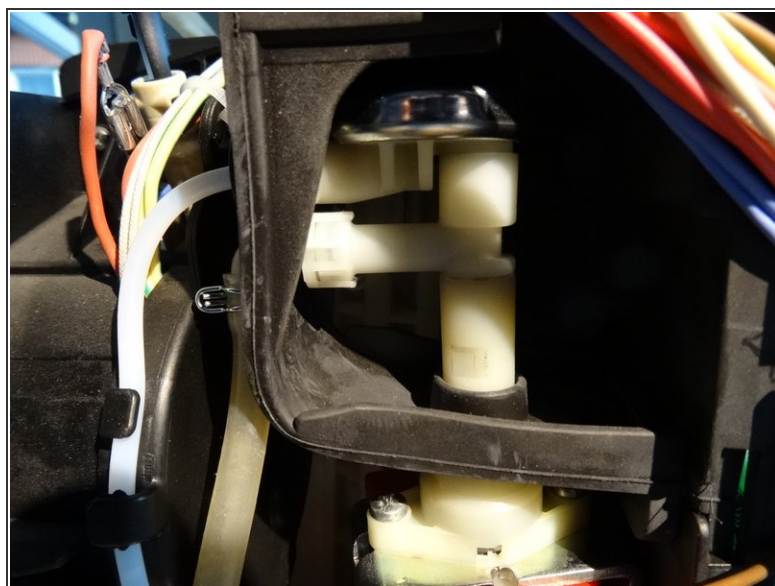
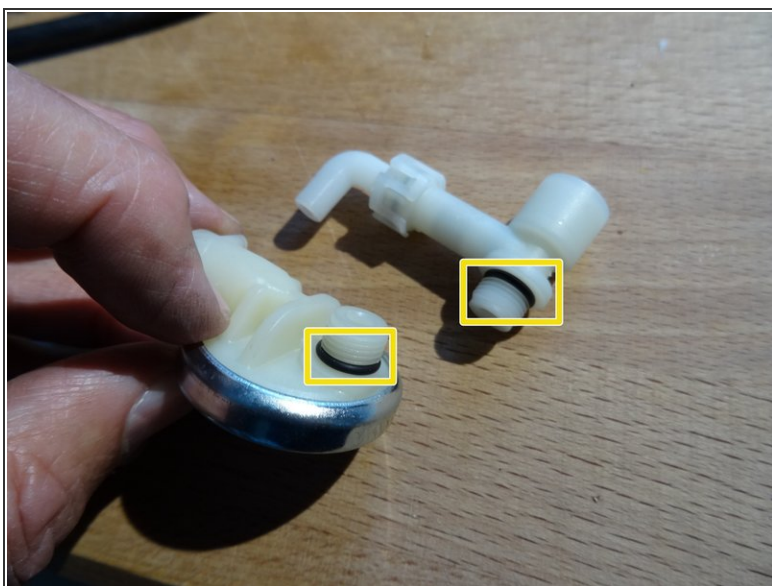
- Remove the two hoses from the valve. For the thicker hose you have to squeeze the hose clamp with pliers, push it away and you can pull off the hose.
- With the thinner pressure hose above you have to pull out first a clamp, then the hose comes out easily. There may be a gasket on the hose or it may stick in the valve.

Step 10



- Pull the pump slightly out of the housing in its rubber mount. Place a fork wrench SW 12 on the pump tube.
- Then turn out the old valve.

Step 11



- Make sure that there is a sealing ring above the thread on the valves, marked yellow in the photo.
- First screw the safety valve into the pump tube. Do not turn too hard.
- then screw the pressure regulating valve into the safety valve.
- Place the two outputs on top of each other.
- Put the two hoses back on. Also pay attention here to the thinner tube on the sealing ring, if possible, a new one.

Repeat the steps in order to reassemble your device.