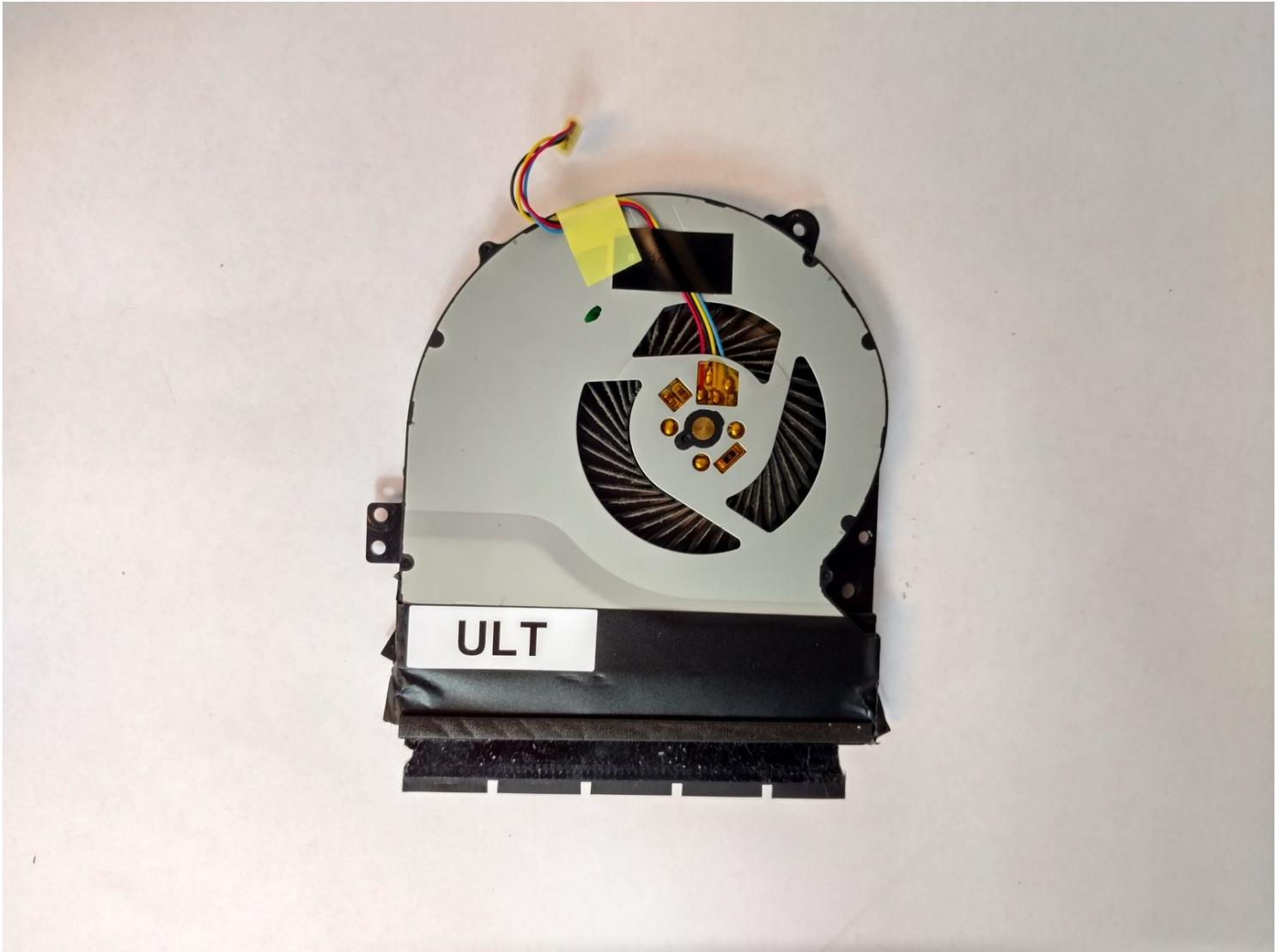




# ASUS X550LB-DS71 Fan Replacement

The fan helps get rid of the excess heat in the...

Written By: Nathan Dyer



# INTRODUCTION

The fan helps get rid of the excess heat in the laptop. A damaged fan can cause overheating and poor performance. This guide explains how to replace it.

## TOOLS:

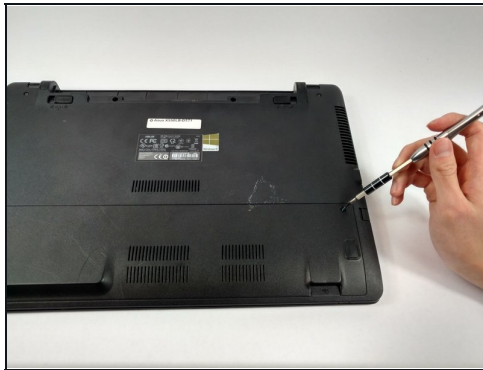
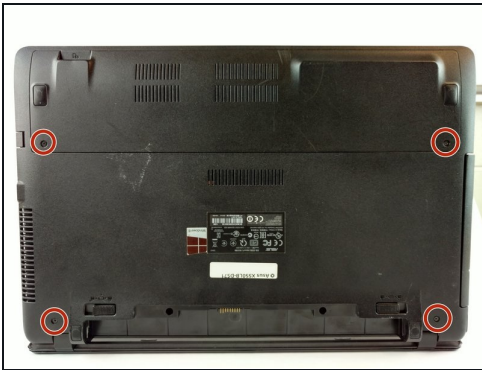
[iFixit Opening Tool](#) (1)

[Phillips #0 Screwdriver](#) (1)

[Phillips #1 Screwdriver](#) (1)

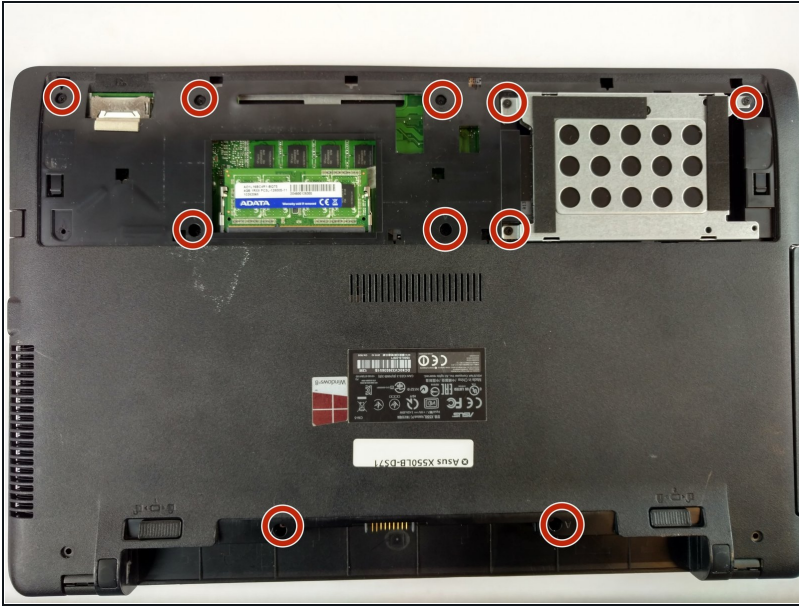
[Tweezers](#) (1)

## Step 1 — Fan



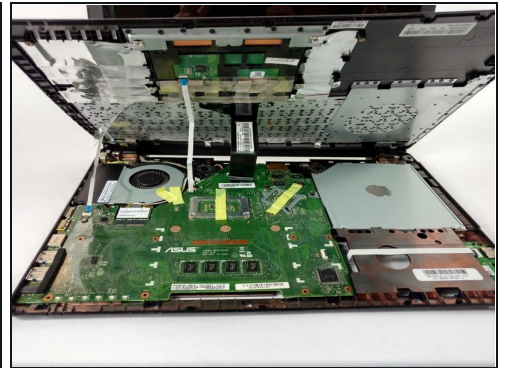
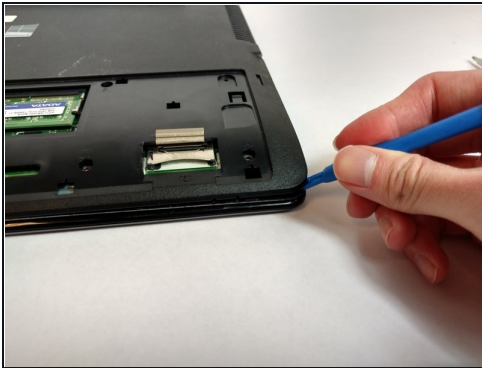
- ① Make sure to switch off your laptop before starting.
- Place the laptop on a flat surface with the bottom side facing upwards.
- Using the Phillips #1 Screwdriver, remove the four 4mm screws in the back panel.
- Using both hands, slide the back panel away from the laptop horizontally.

## Step 2



- Using the Phillips #0 Screwdriver, remove the ten 2mm screws at the marked locations.
- ⓘ At this point, it is advised to disconnect the hard drive from the motherboard.

## Step 3

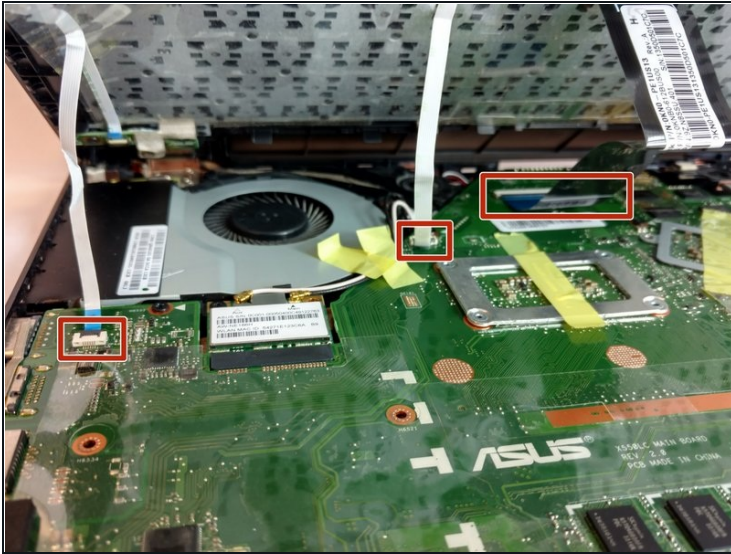


- Using the plastic opening tool, open the back cover of the laptop.
- ⓘ It is recommended that you start from a corner and run the tool along the edge of the cover.

⚠ Be careful not to bend or crack the cover.

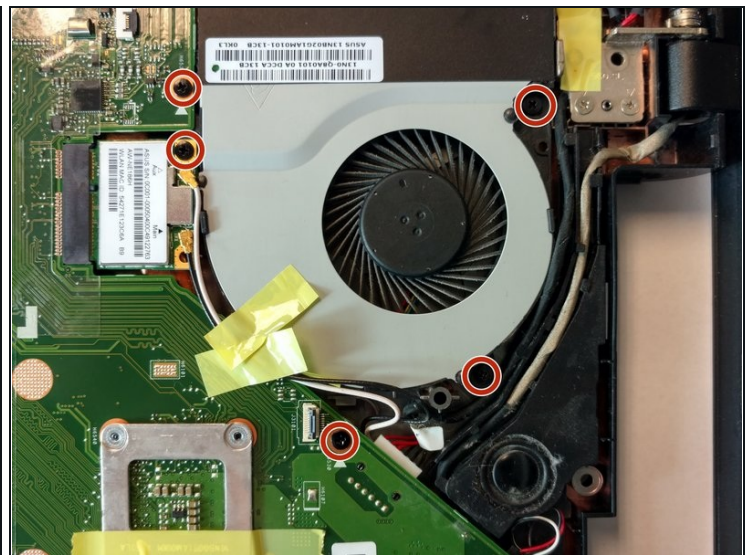
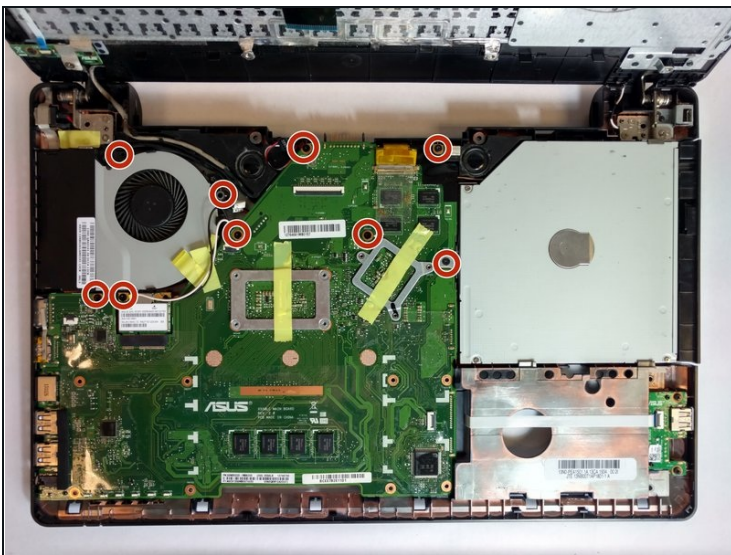


## Step 4



- Locate the three ribbon connectors.
  - Using the plastic opening tool, flip up all three gray tabs and remove the ribbon connectors from the motherboard.
- ⚠ Once the tabs are released, the ribbons will be easy to remove. Do not pull on the ribbons.

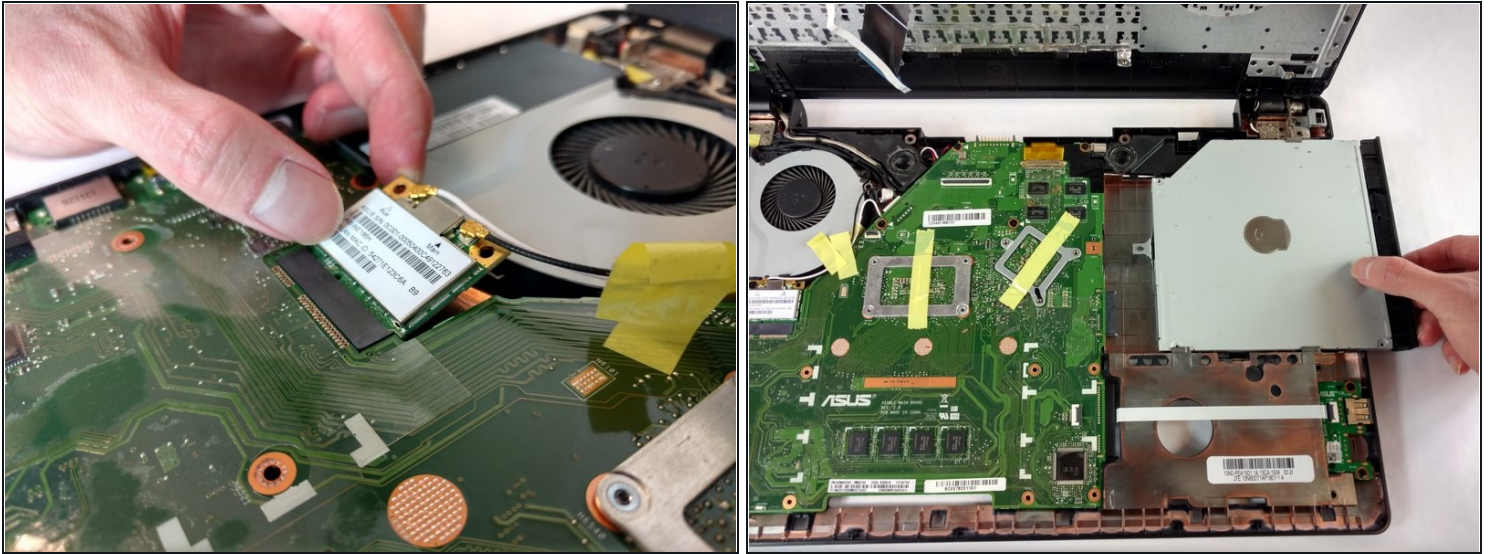
## Step 5



- Using the Phillips #0 Screwdriver, remove the nine 2mm screws at the marked locations.

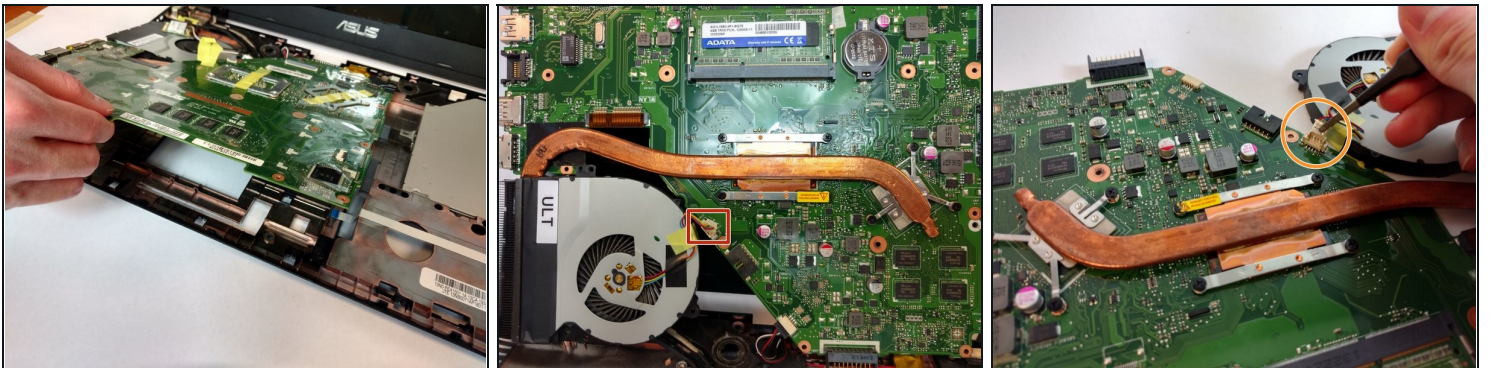


## Step 6



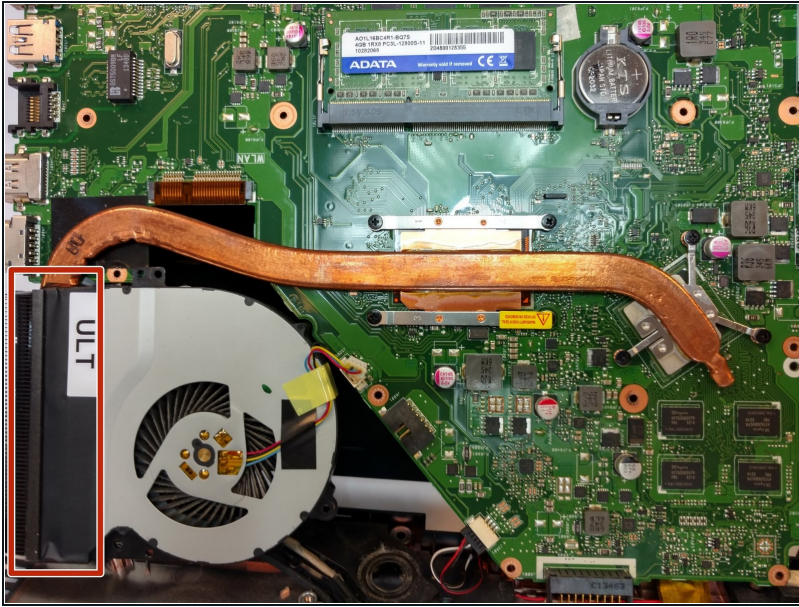
- Disconnect the WLAN Card from the motherboard by pulling the connector upwards.
- Disconnect the optical drive from the motherboard by sliding it to the right.

## Step 7



- Flip the motherboard to show the underside.
- Locate the square fan connection attached to the motherboard.
- Disconnect it using the [tweezers](#) (blunt).

## Step 8



- Remove the black tape from the fan as seen in the marked location.
- ⓘ At this point, the fan is now disconnected from the motherboard.

To reassemble your device, follow these instructions in reverse order.