



Asus Chromebook C300MA-DH02 Wireless Card Replacement

This guide will help you replace the wireless card and will get you back on the internet in no time.

Written By: Zachary Leonard



INTRODUCTION

This guide will teach you how to replace the computer's wireless card. The wireless card interacts with the WiFi wherever you are. The wireless card is the size of a ritz cracker.



TOOLS:

- [Phillips #000 Screwdriver](#) (1)
- [Spudger](#) (1)
- [iFixit Opening Tools](#) (1)



PARTS:

- [Asus Chromebook C300MA-DH02 Wireless Card](#) (1)

Step 1 — Keyboard Panel



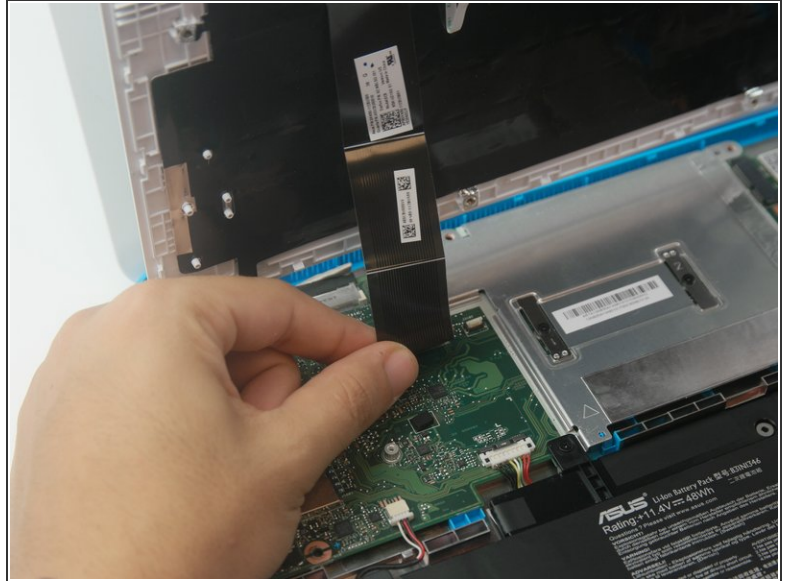
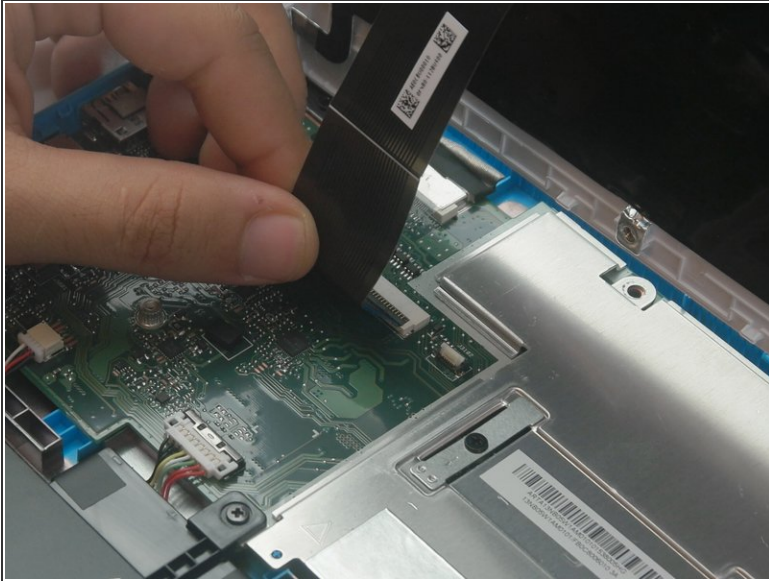
- Flip the Chromebook over so that the underside is facing up.
- Using the Phillips PH #000 screwdriver, remove the 11 "4mm" screws on the back of the device.

Step 2



- Wedge the plastic opening tool between the bottom cover of the laptop and the keyboard panel.
- Apply pressure and move the plastic opening tool around the border of the laptop until it pops out.

Step 3



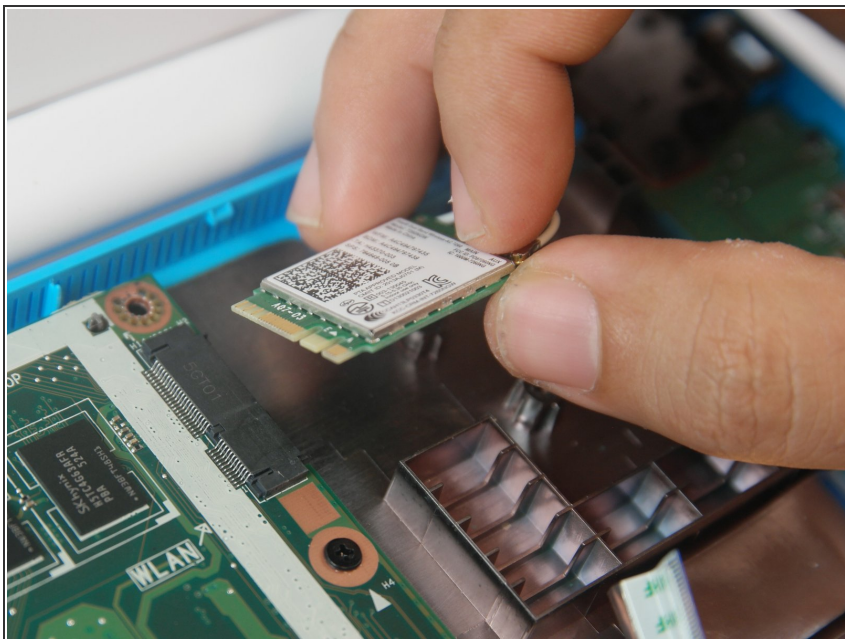
- Once the keyboard panel pops out, slowly move it upwards so that the keyboard connection is visible.
- Remove the keyboard connection from the motherboard by pulling it outwards from the connector.

Step 4 — Wireless Card



- Using the Phillips #000 screwdriver, unscrew the 4mm screw.

Step 5



- Gently remove the wireless card making sure to not damage the connecting port.

To reassemble your device, follow these instructions in reverse order.