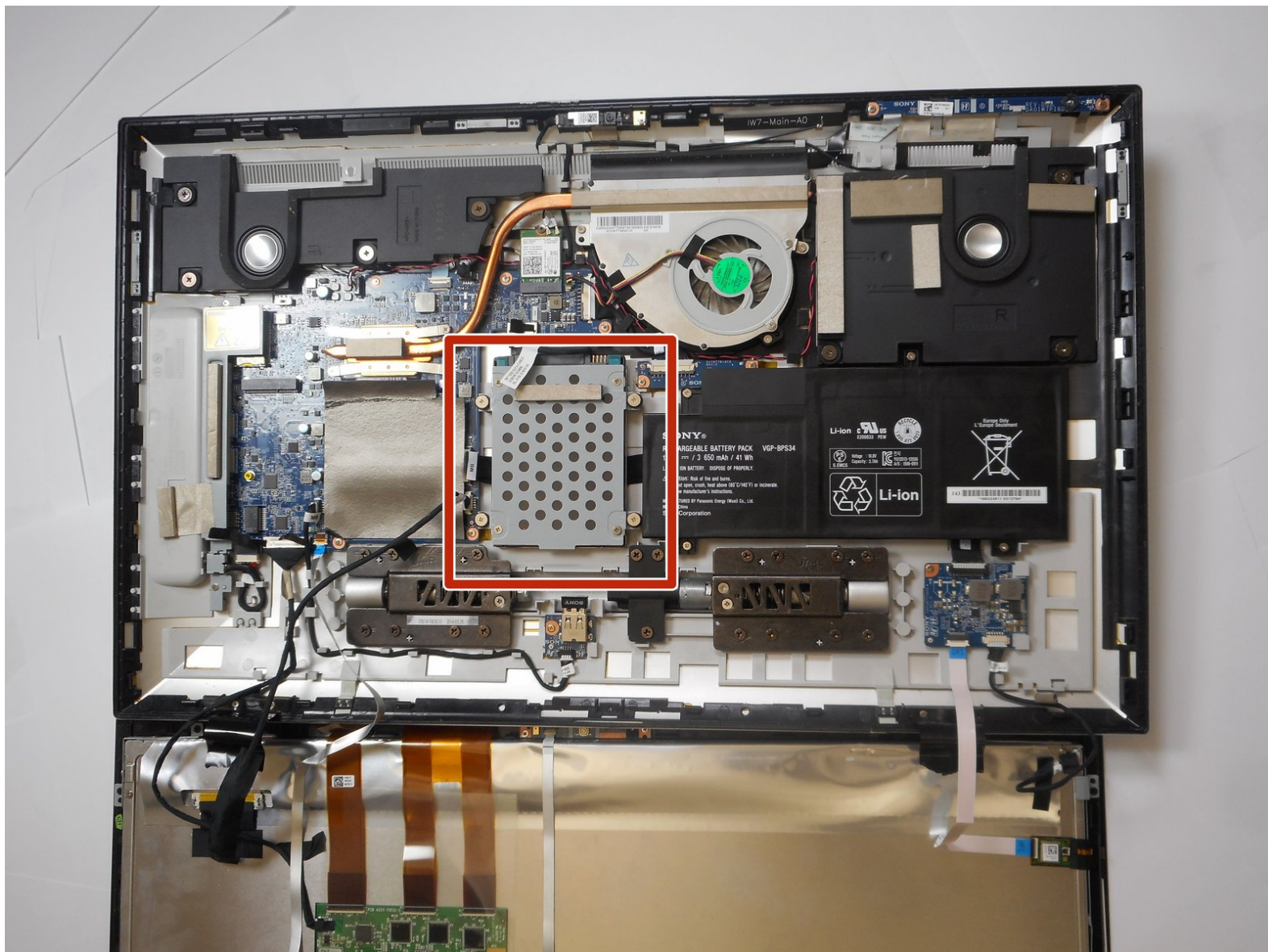




Sony Vaio Tap 21 SVT212A11L Hard Drive Replacement

How to take out the hard drive in a Sony Vaio Tap 21 SVT212A11L.

Written By: Mauricio Retana



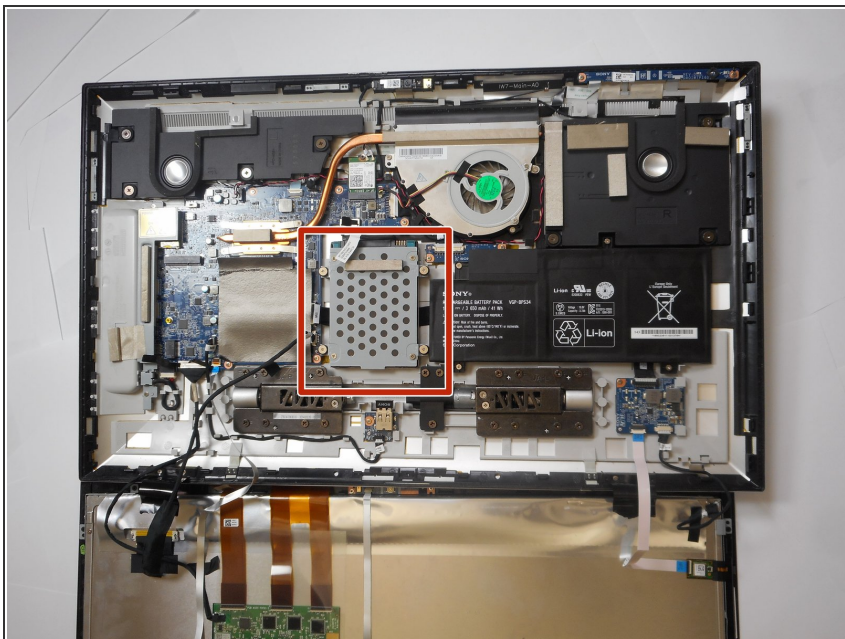
INTRODUCTION

Use this guide to replace the hard drive on a Sony Vaio Tap 21 all-in-one. The hard drive is covered by a circle pattern metal grill. It is located in between the battery and the motherboard.

TOOLS:

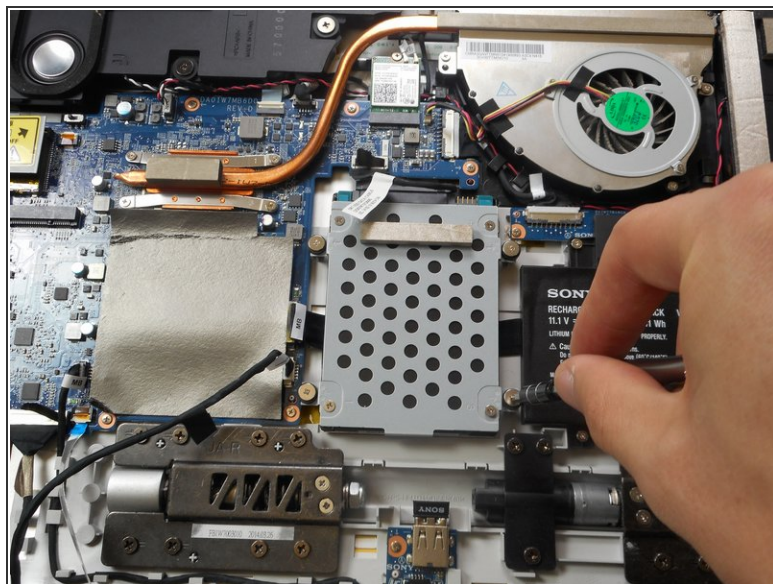
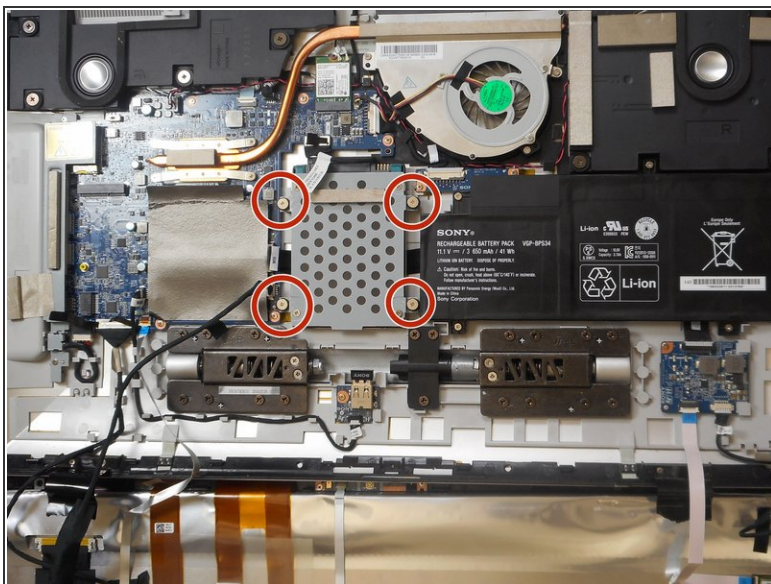
- [JIS #0 Screwdriver](#) (1)
-

Step 1 — Hard Drive



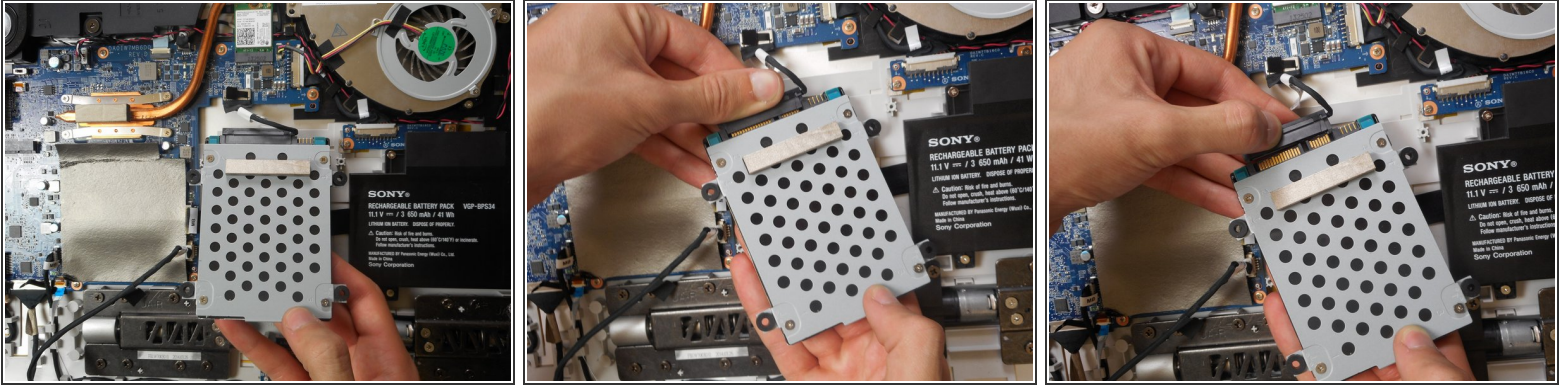
- Locate the hard drive.

Step 2



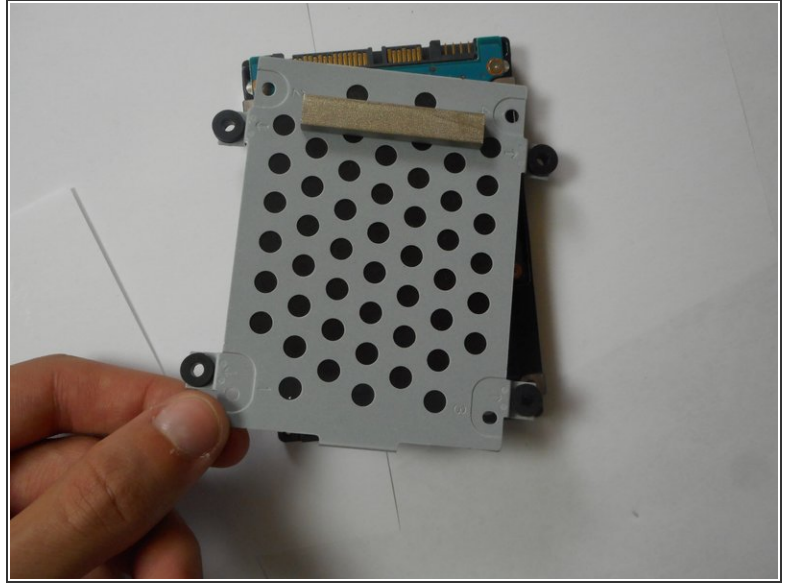
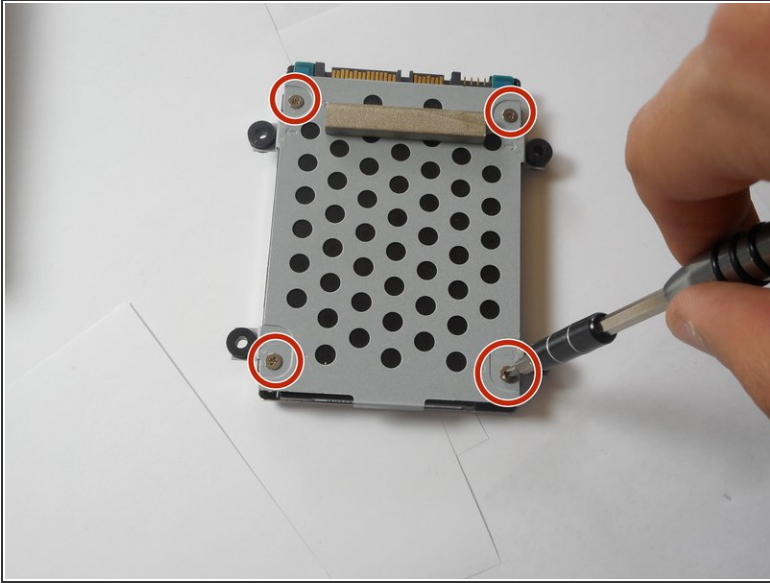
- Locate the 13mm screws for the hard drive and use the JIS 0 screwdriver to unscrew.

Step 3



- Gently lift the hard drive upwards.
 - Ensure you have a gentle hold on the hard drive cable.
 - Gently pull the cable from the base where the cable header meets the hard drive.
- i** To ensure no damage is done on the cable header, pull the header gently from both sides at the same time or gently from the center.

Step 4



- Locate the screws.
- Using the JIS 0 screwdriver, unscrew the 4mm screws.
- Gently lift the frame after screws have been taken out.

To reassemble your device, follow these instructions in reverse order.