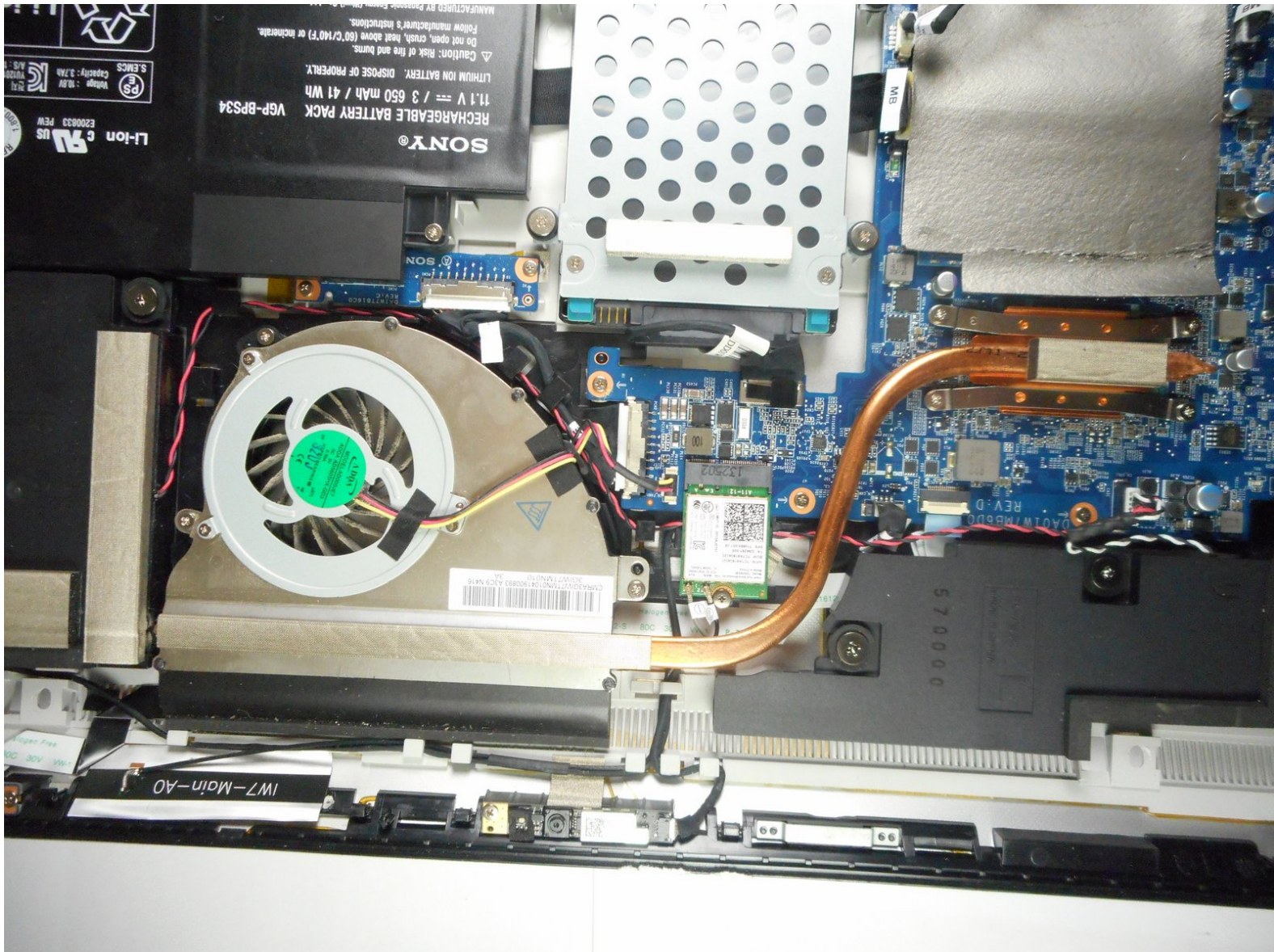




Sony Vaio Tap 21 SVT212A11L Fan Replacement

How to replace a the fan in a Sony Vaio Tap 21 SVT212A11L.

Written By: Mauricio Retana



INTRODUCTION

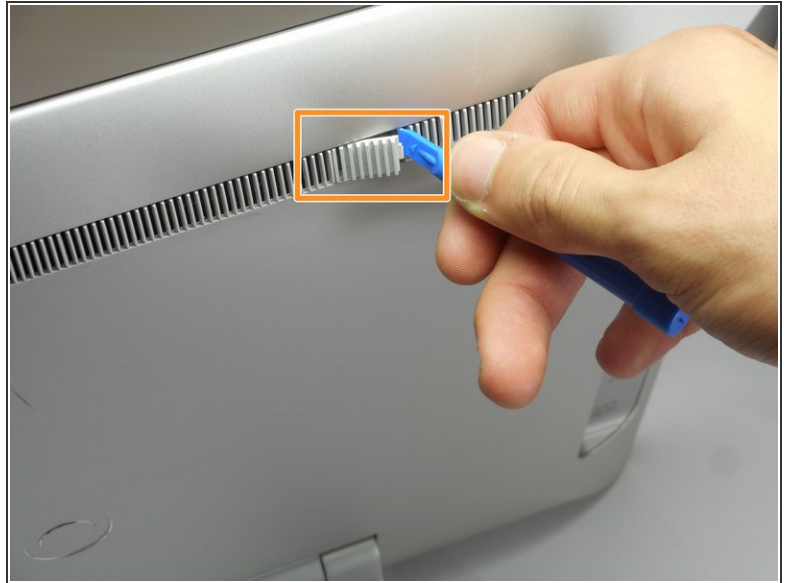
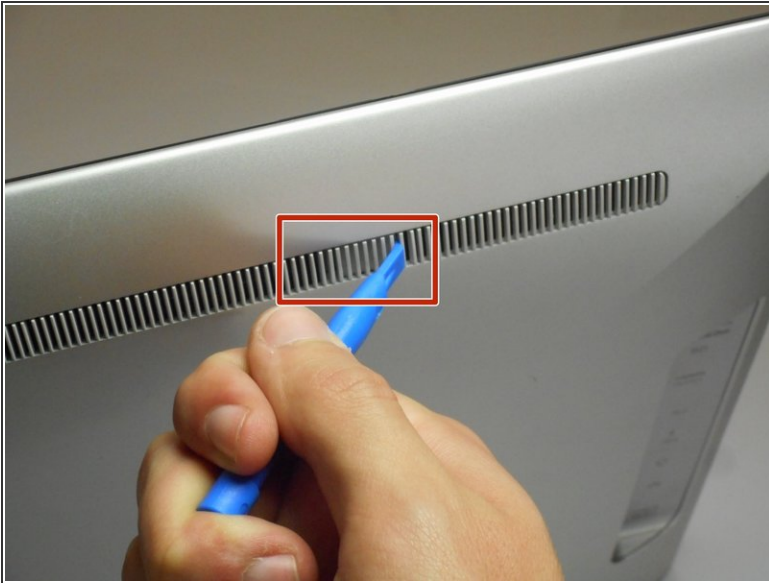
Use this guide to replace the fan on a Sony Vaio Tap 21 all-in-one desktop. The fan has a copper attachment on the motherboard . The actual fan itself is between the two speakers. The fan might need replacing if the device is overheating more than usual.




TOOLS:

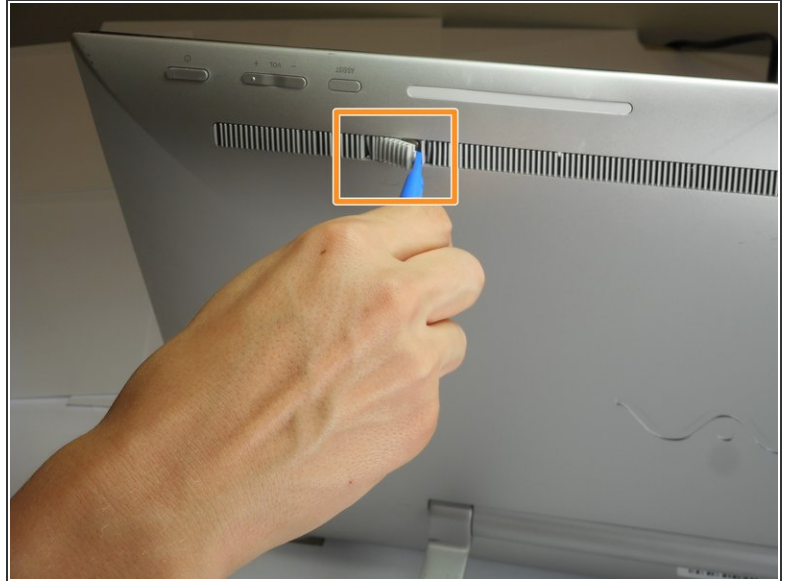
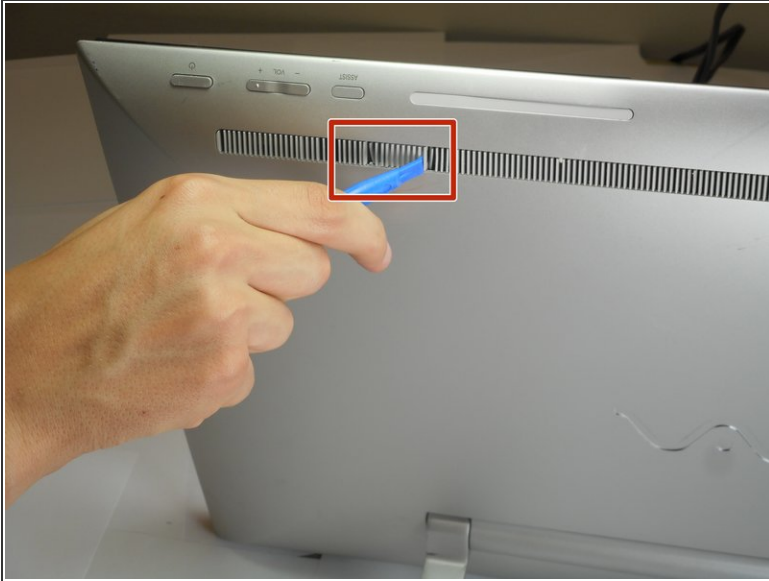
- [iFixit Opening Tools](#) (1)
 - [JIS #0 Screwdriver](#) (1)
 - [Phillips #1 Screwdriver](#) (1)
-


Step 1 — Screen



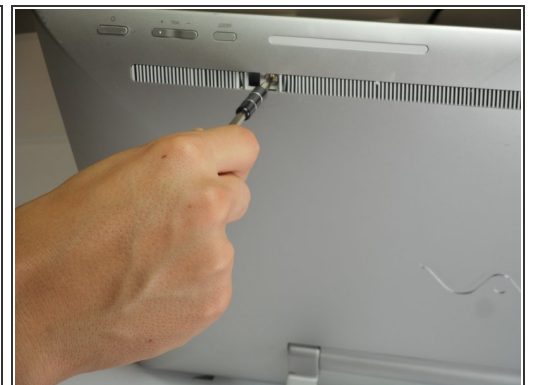
- Insert the plastic opening tool at an angle into the grill and lift the tab by applying force down and to the left as you are lifting it out of place.
 - Use your plastic opening tool to remove the right plastic tab blocking the screw mounts behind the device.
 - The plastic tab is located on a plastic stretch of grill running along the upper half of the back of the device.
-  You can find the tab looking for a solid fill within the grill. The tab is solid within the slits.

Step 2



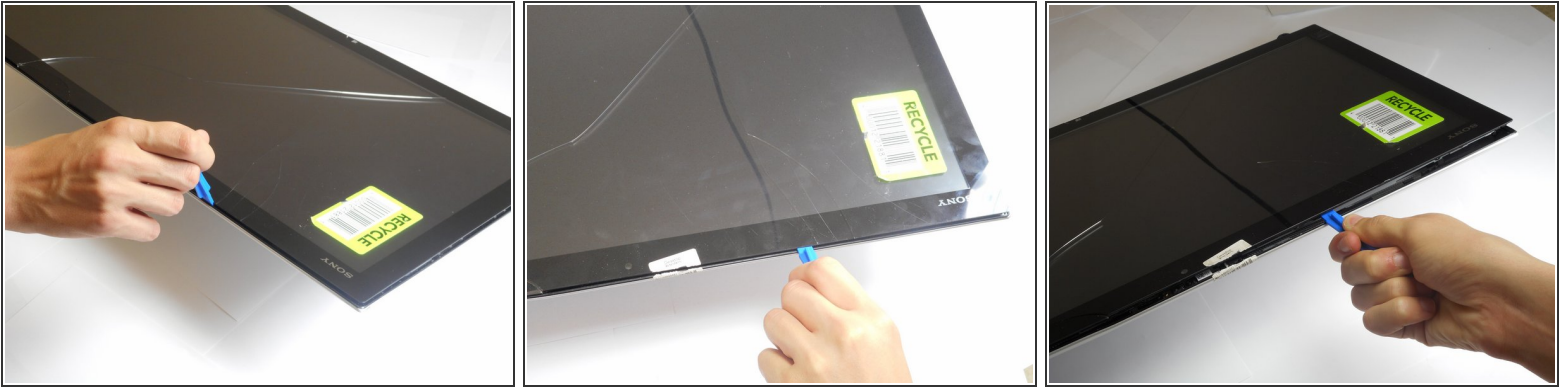
- Insert the plastic opening tool at an angle into the grill and lift the tab by applying force down and to the left as you are lifting it out of place.
 - Use your plastic opening tool to remove the right plastic tab blocking the screw mounts behind the device.
 - The plastic tab is located on a plastic stretch of grill running along the upper half of the back of the device.
-  You can find the tab looking for a solid fill within the grill. The tab is solid within the slits.

Step 3



- Remove the two 5mm screws on the back of the device using a JIS 0 screwdriver.

Step 4



- Face the screen of the device upwards.
 - Gently un-clip the screen around the four sides of the body with the plastic opening tool.
 - Use an up-down motion.
- i** It would be easier to do this if the device is fully rested flat by pushing the device down. It should rest on the stand.

Step 5



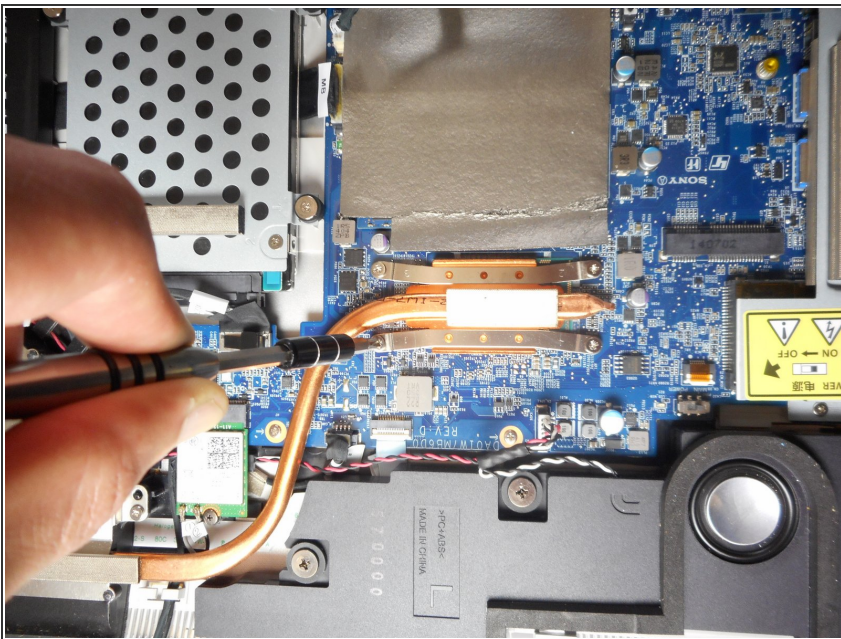
- Lift the screen gently from the top of the device.
- i** Make sure to lift the screen from the same side the screws were removed.

Step 6



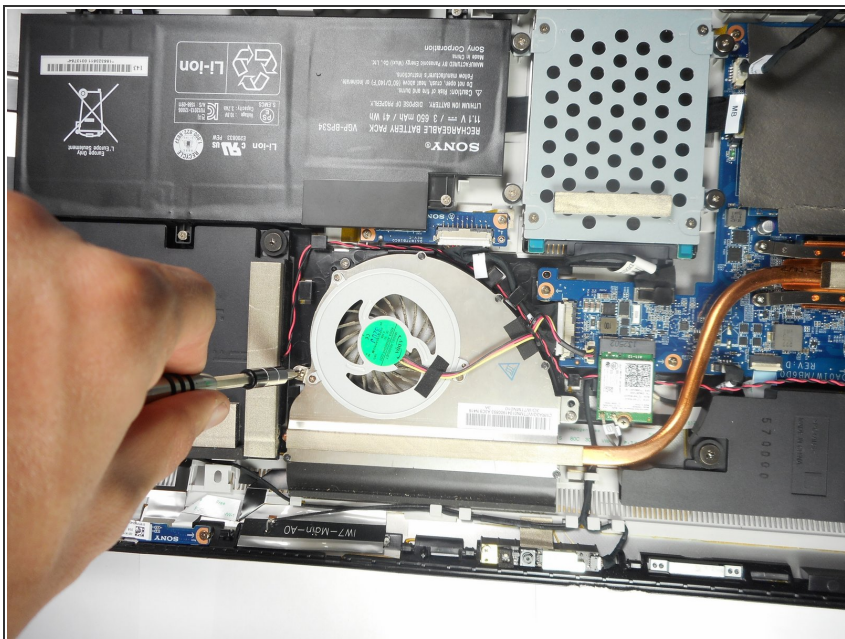
- Slowly and gently lay the screen on its face.
- ⓘ It's important that the cables are not damaged while doing this process. Ensure as you lay the screen on its face any cables are carefully moved insuring no stress is applied on the cables.

Step 7 — Fan



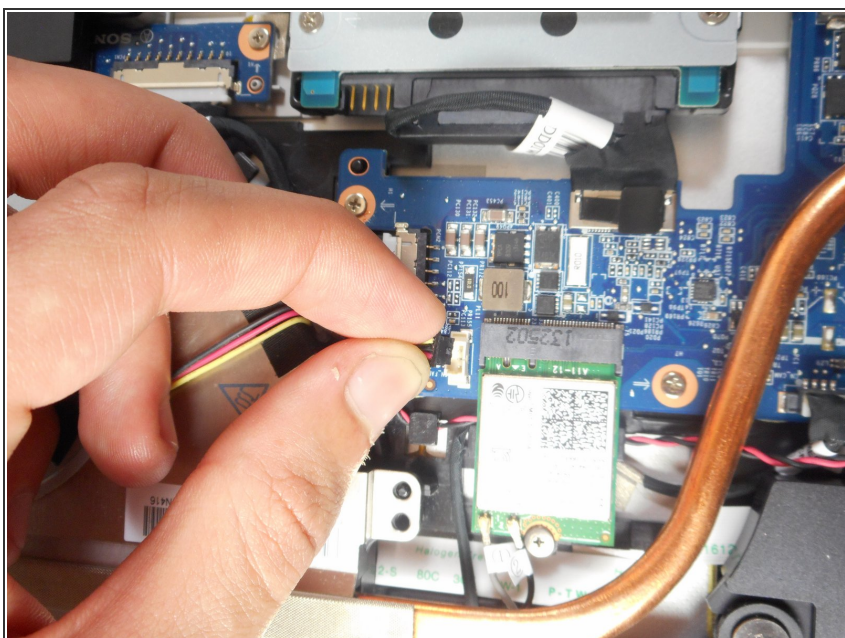
- Remove four 9mm screws from the fan attachment located on the motherboard with a Phillips #1 screwdriver.

Step 8



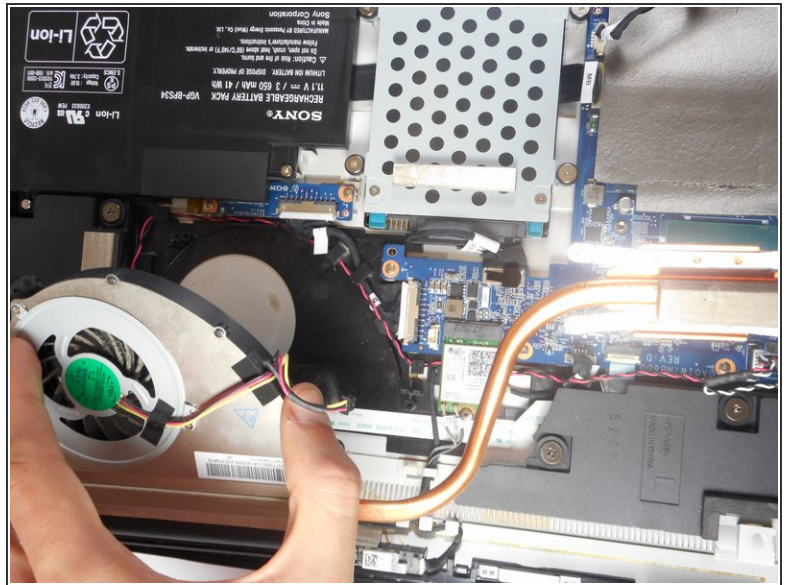
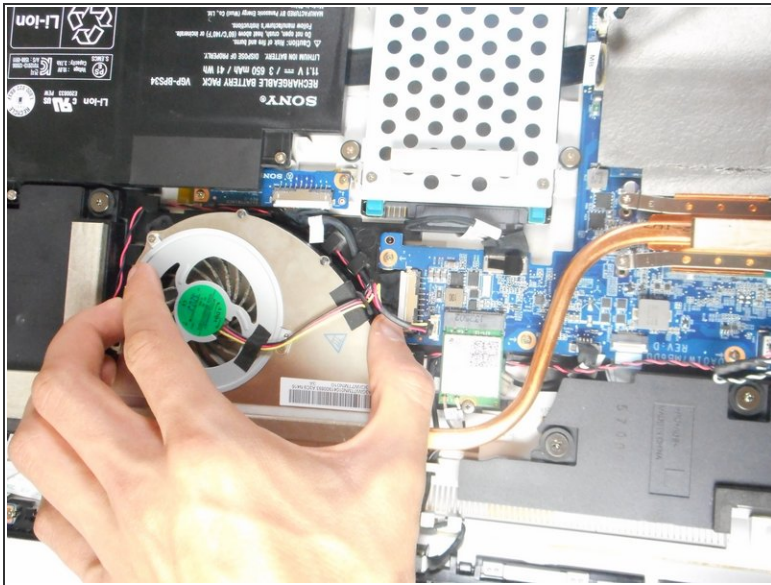
- Remove two 6mm screws located on both sides of the fan component using a Phillips #1 screwdriver.

Step 9



- Un-click the cables attached to the face of the motherboard.
- ① These cables are secured tight in their place so remove them with a firm grip.

Step 10



- Firmly lift the fan from the surface.
- ⓘ The fan is held tight in its place so lift it with slightly more force.

To reassemble your device, follow these instructions in reverse order.