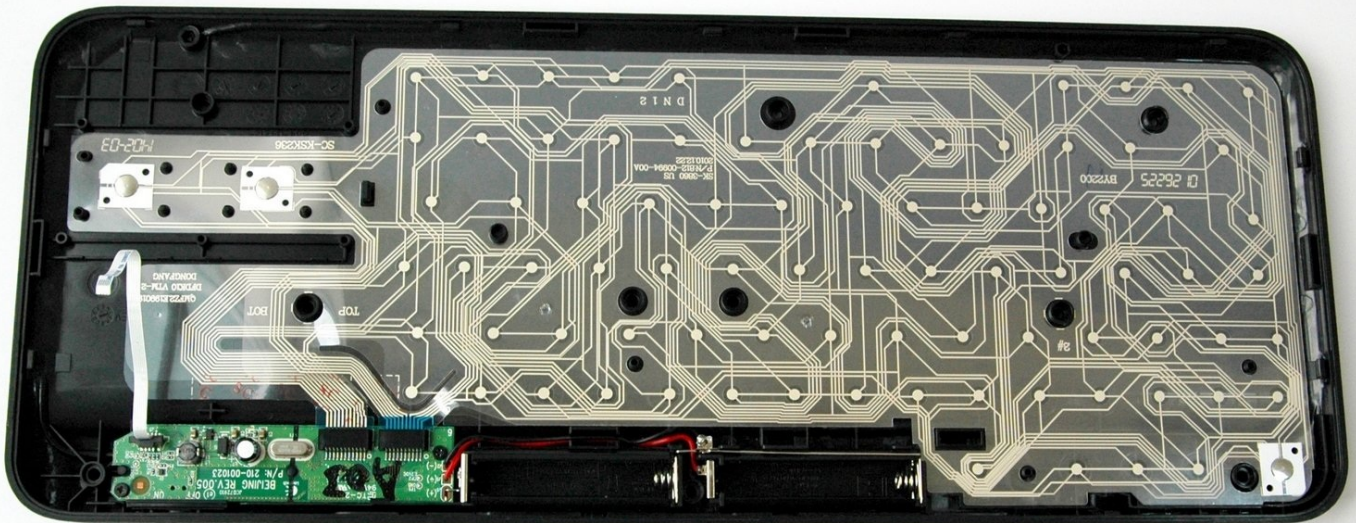




Logitech Harmony Smart Keyboard Key Printed Circuit Board (PCB) Replacement

This is a replacement guide for the Logitech...

Written By: Hayley Nichols



INTRODUCTION

This is a replacement guide for the Logitech Harmony Smart Keyboard's key printed circuit board.

The keyboard printed circuit board (PCB) sends messages to the wifi and transmits key data to the server.

TOOLS:

[Spudger](#) (1)

[Phillips #1 Screwdriver](#) (1)

[ESD Safe Blunt Nose Tweezers](#) (1)

Step 1 — Back Panel



- Turn keyboard over to the backside.

Step 2



- Press and slide up on the upper battery latch, using both thumbs.

Step 3



- Remove the two AA batteries and set them aside.

Step 4



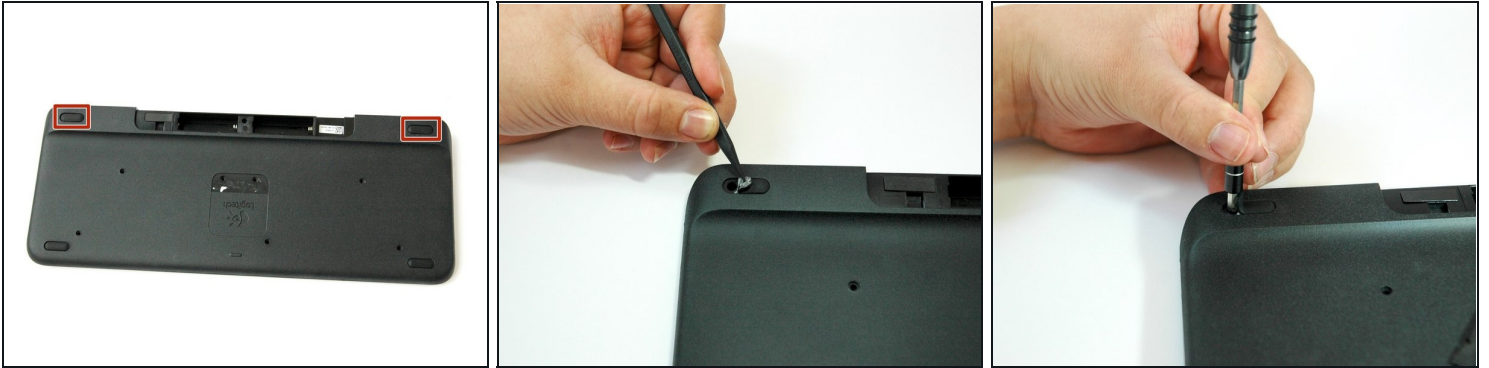
- Unscrew all five 4.0 mm screws, using Phillips #1 screwdriver.

Step 5



- Peel off the center sticker to reveal two hidden 4.0 mm screws.
- Unscrew these two screws with a Phillips #1 screwdriver.

Step 6



- Lift both top left and top right rubber stickers halfway, using the sharp end of the plastic spudger.
- Unscrew a total of two 4.0 mm screws, under the rubber stickers, using a Phillips #1 screwdriver.

Step 7



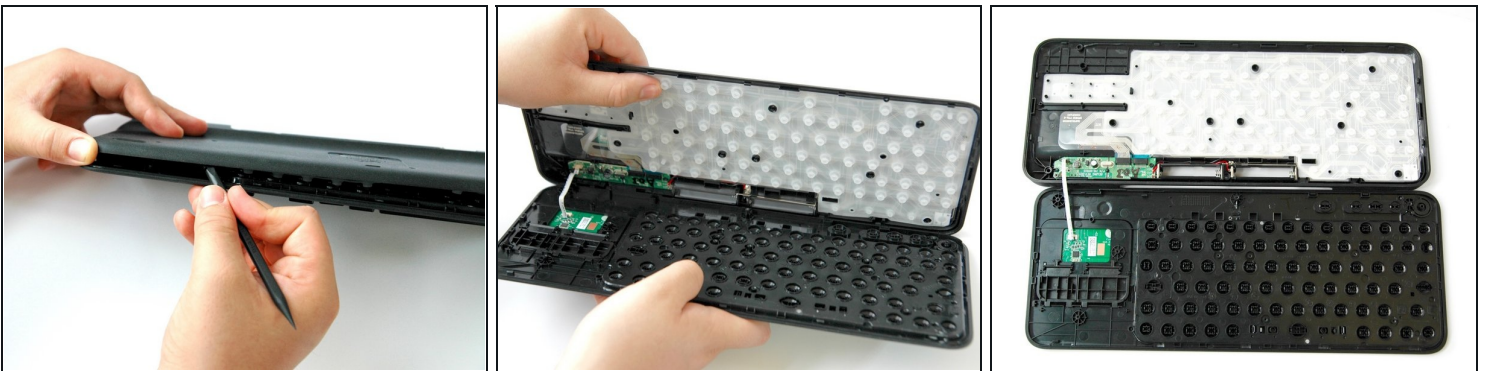
- Unscrew the top center 4.0 mm screw, in the battery compartment, using the Phillips #1 screwdriver.
- ① Now, you should have a total of ten 4.0 mm screws set aside.

Step 8



- Wedge the flat end of the spudger between the back panel and front panel.
- Slide the flat end of the spudger from right to left to pry the two panels apart.

Step 9

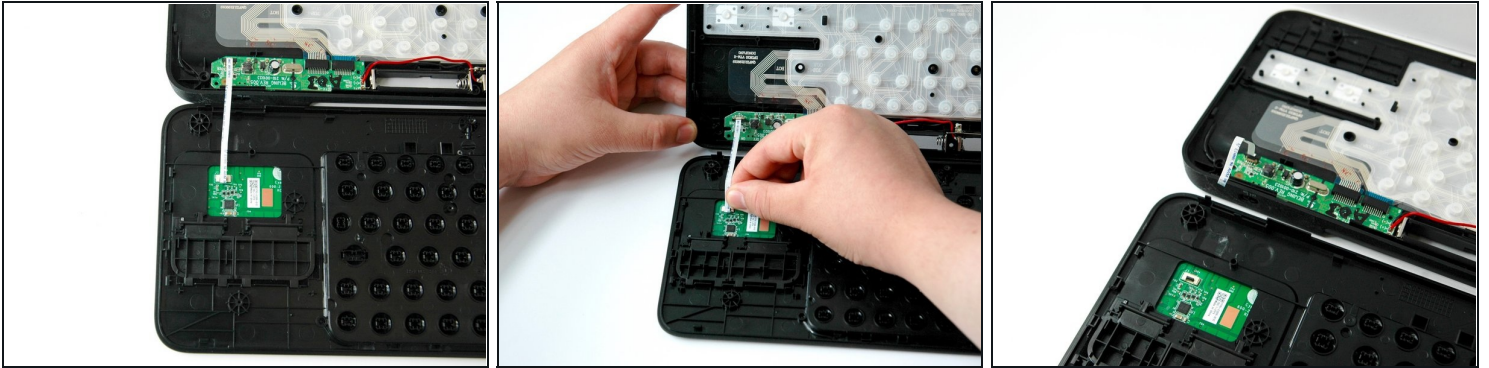


- Separate the back panel from the front panel completely, using both hands.

ⓘ A white ribbon flex cable will remain connected to both panels.

⚠ Pull the panels apart slowly and gently, or the white ribbon flex cable may be unsafely removed.

Step 10 — Keyboard Printed Circuit Board (PCB)



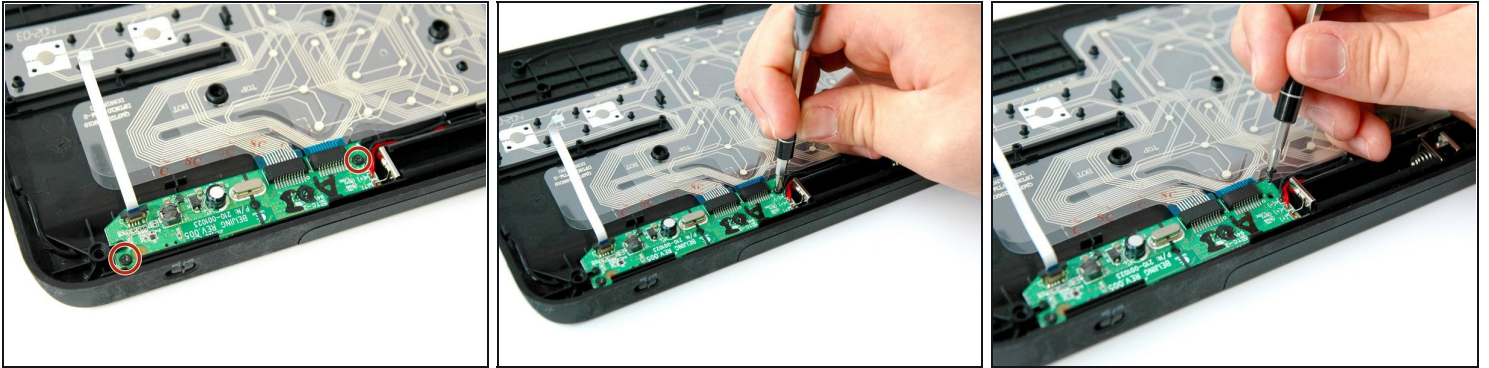
- Grip the lower end of the ribbon flex cable (white band) using your thumb and index finger.
- Then slide the strip out toward yourself in a scooping motion.
- ① Now, you should have two completely separated panel pieces.

Step 11



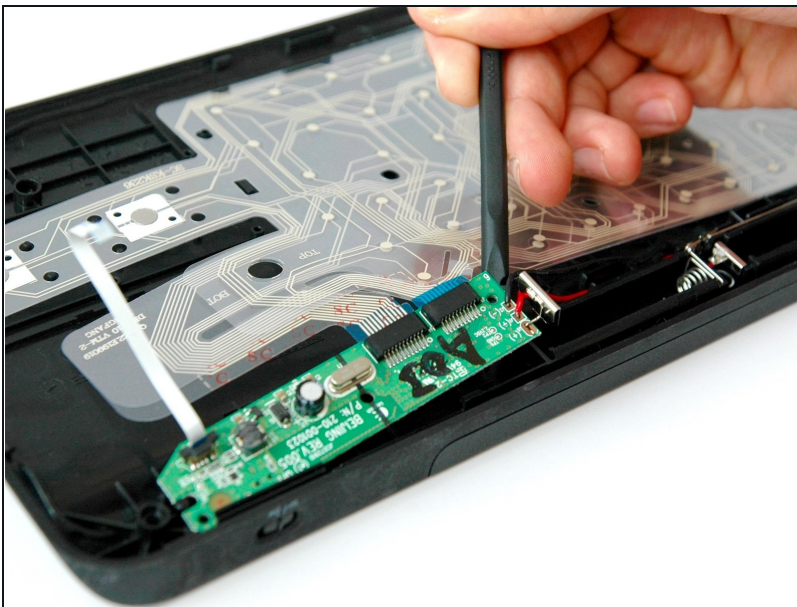
- Lift and remove the white rubber sheet that lays over the keyboard pet flexible PCB.

Step 12



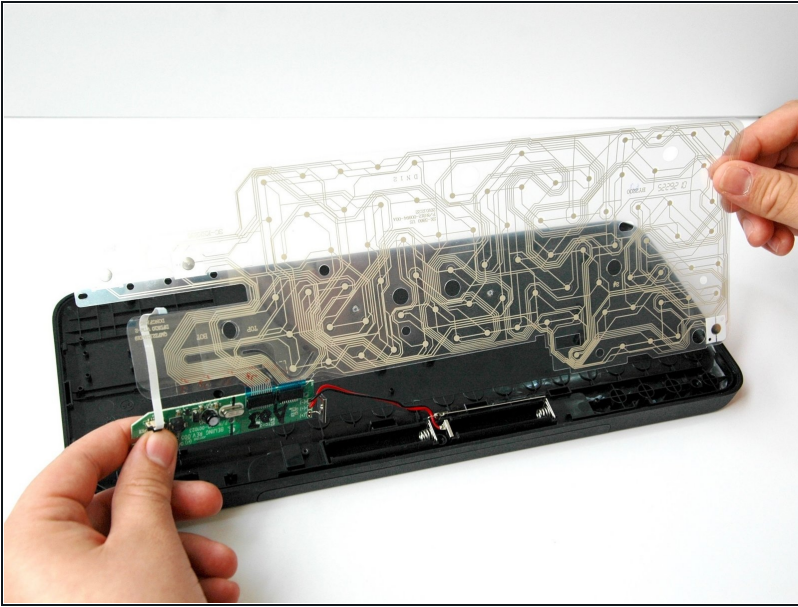
- Unscrew the two 4.0 mm screws on either side of the green card using a Phillips #1 screwdriver.

Step 13



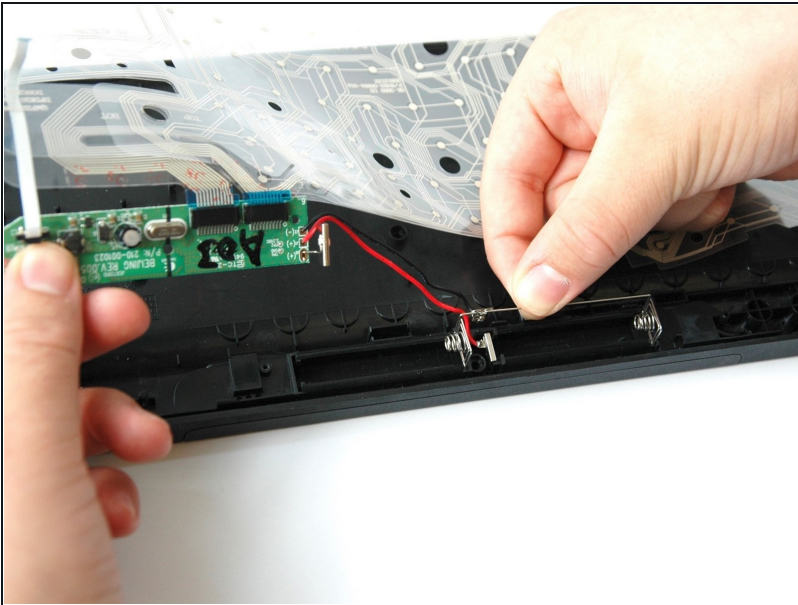
- Lift the green card up using the flat end of the plastic spudger.

Step 14



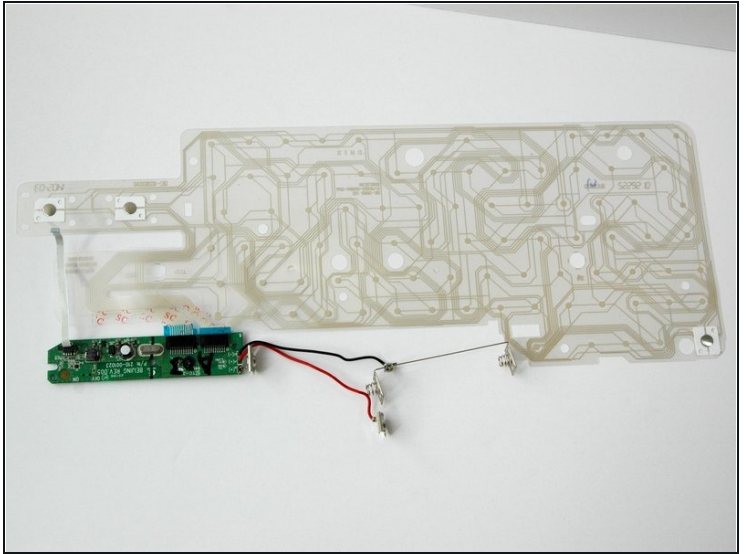
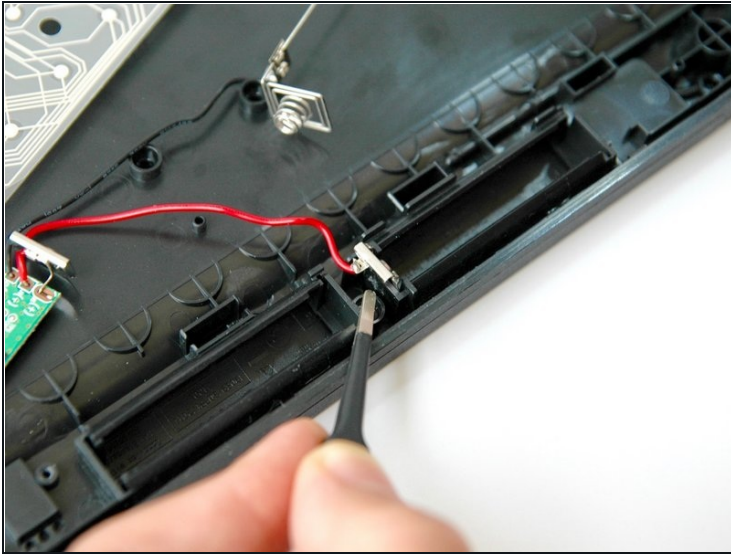
- Grip and lift the keyboard PCB up and out.
- ① The battery wires will remain connected.

Step 15



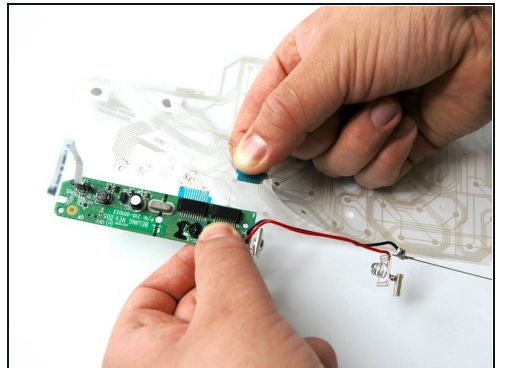
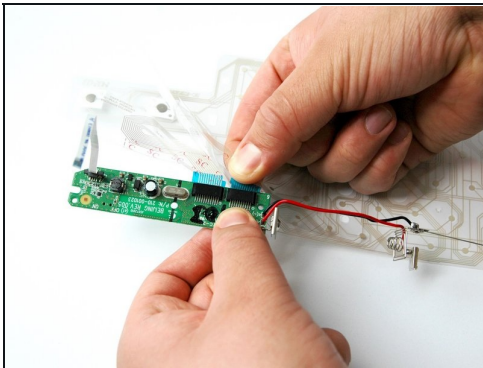
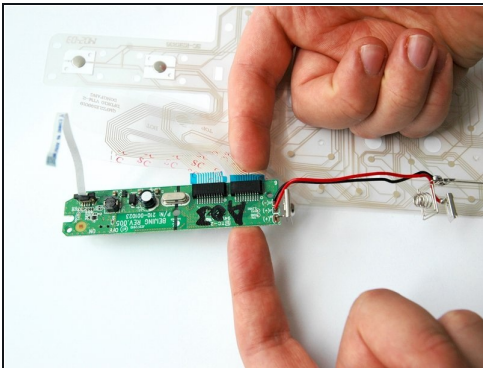
- Grip and lift the battery wire bar out of the battery compartment, using your thumb and index finger.

Step 16



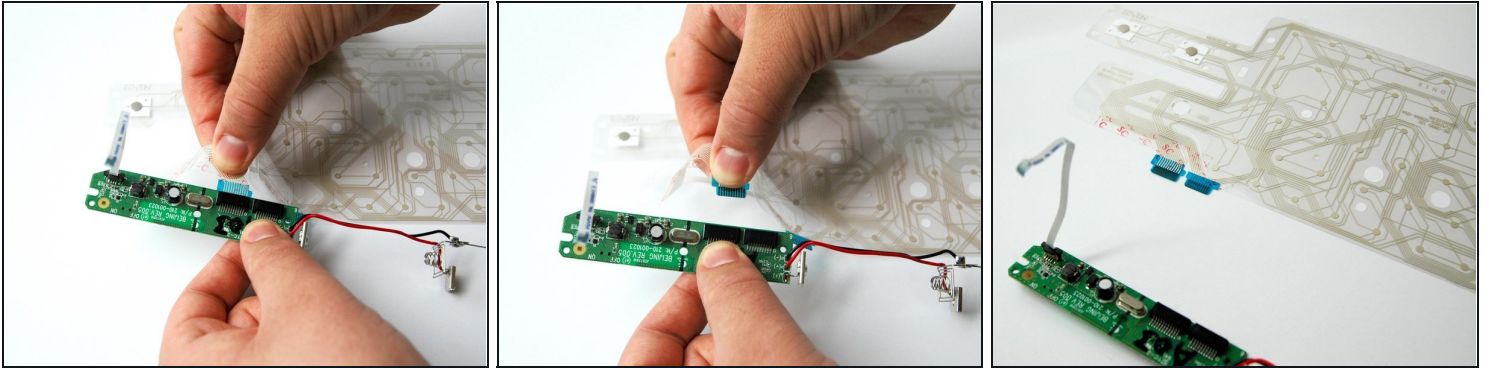
- Pinch your precision [tweezers](#) and wedge the battery clamp up.
 - Lift the entire keyboard PCB out of the panel.
- ❗ The keyboard PCB will remain connected to the green card.

Step 17



- Slide your index finger into the slot under the right blue tab.
- Pinch and pull the right blue tab away from the green card.

Step 18



- Pinch and pull the left blue tab away from the green card.

To reassemble your device, follow these instructions in reverse order.