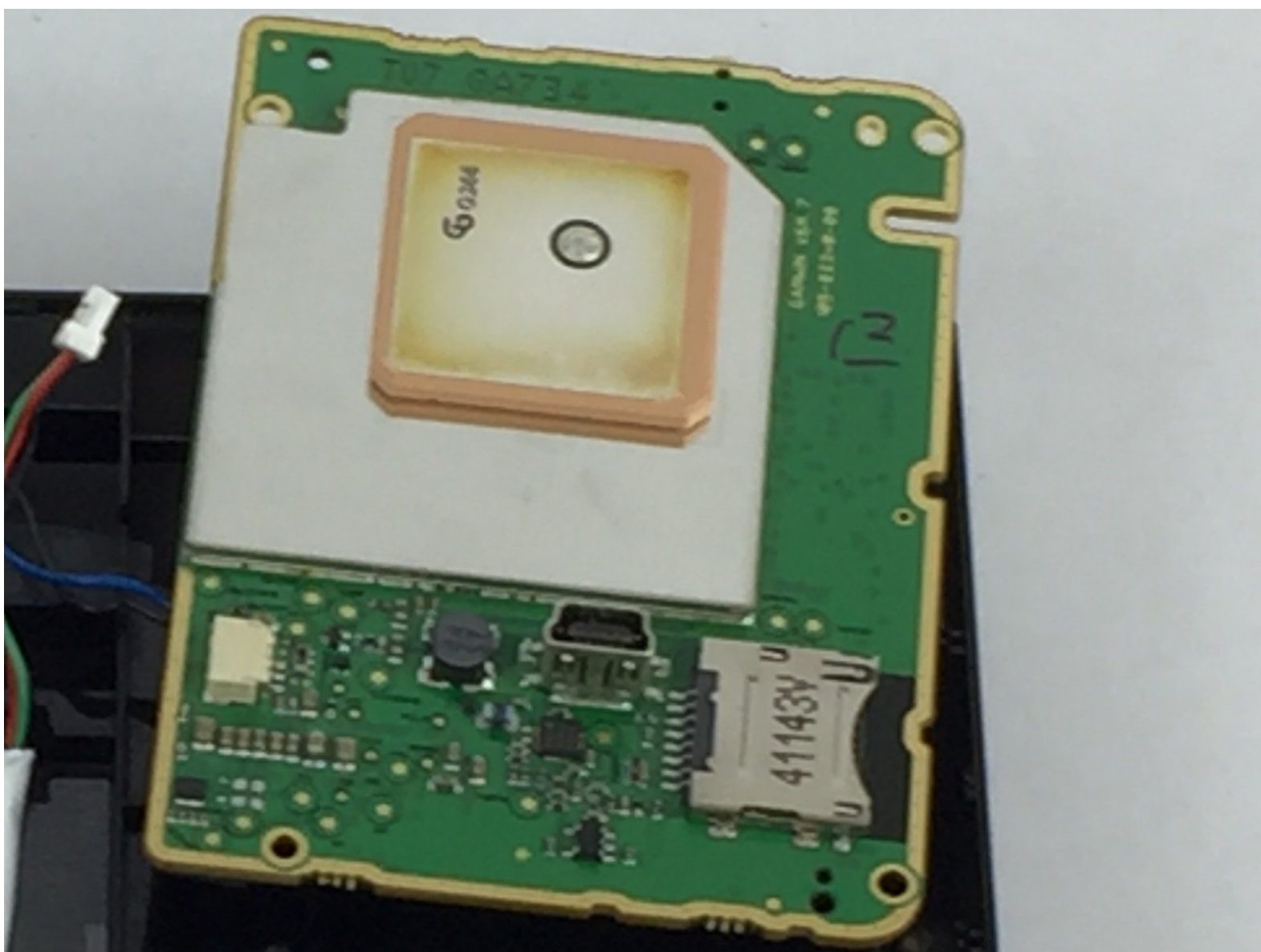




Garmin Nuvi 56LMT Motherboard Replacement

The motherboard is what controls the electrical signals that the device utilizes to function. Replacing it will allow the device to run more efficiently.

Written By: Ryan Bliss



INTRODUCTION

The motherboard is a very important part of the Garmin Nuvi 56LMT. It is what allows the GPS to function. All components of the GPS are attached to the motherboard via wires and ribbons. It is very important to handle the wires and ribbons with care, as these components are very fragile.



TOOLS:

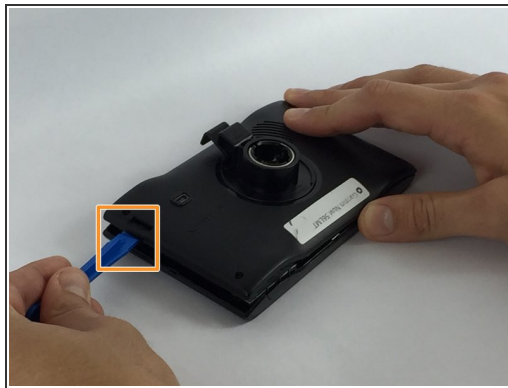
- [T5 Torx Screwdriver](#) (1)
 - [iFixit Opening Tools](#) (1)
-

Step 1 — Motherboard



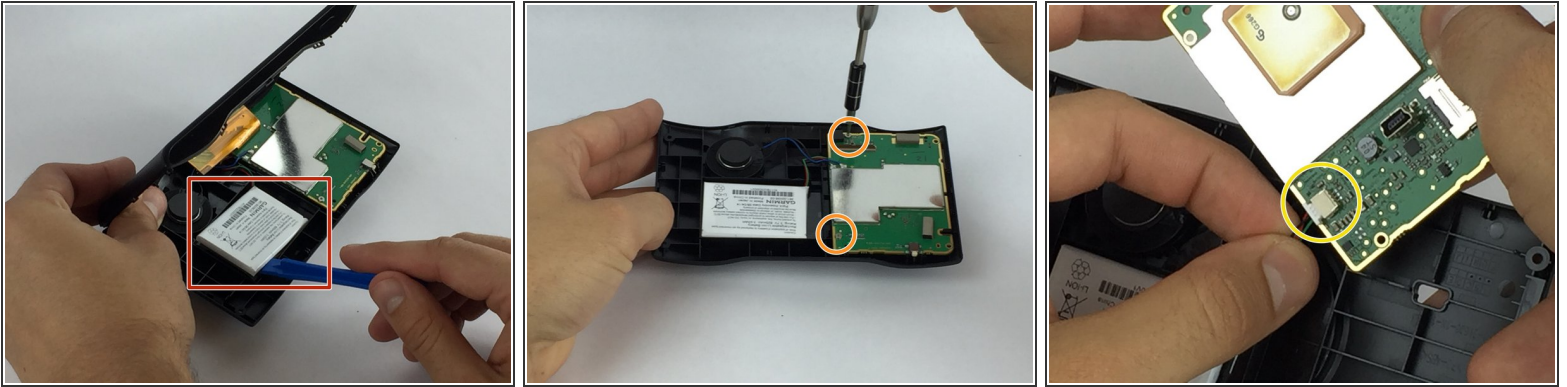
- ❗ Power off the Garmin Nuvi 56LMT before disassembling.
- This will teach you how to replace the motherboard of the Garmin Nuvi 56LMT

Step 2



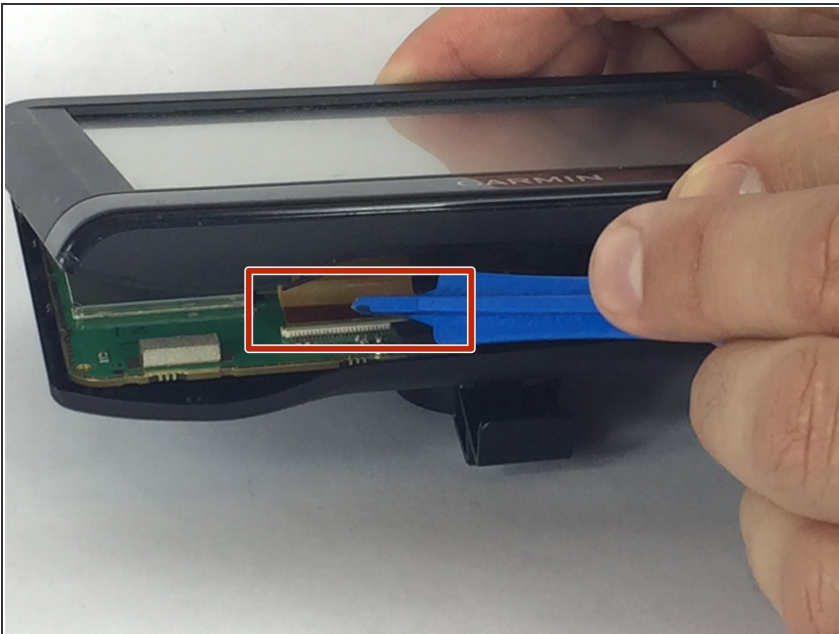
- Remove the 11mm screws on the back side of the case with a T5 torx screwdriver.
- Then, use the plastic opening tool to carefully pry the case open.

Step 3



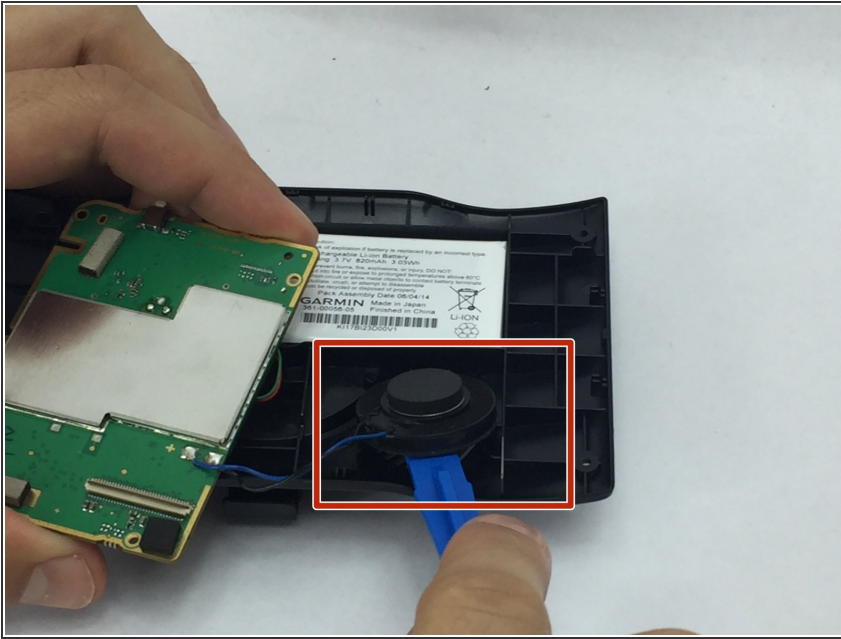
- Use the plastic opening tool to carefully pry the battery from the case.
- Then remove the 5mm screws that are present on the motherboard.
- Disconnect the battery from the motherboard, by pinching the wires and pulling straight out.

Step 4



- Remove the ribbon connecting the motherboard to the screen by using the wedge to peel back the clasp holding the ribbon in place.

Step 5



- The speaker is soldered to the motherboard so they need to be removed together. Use the plastic opening tool to remove the speaker from the case.

To reassemble your device, follow these instructions in reverse order.