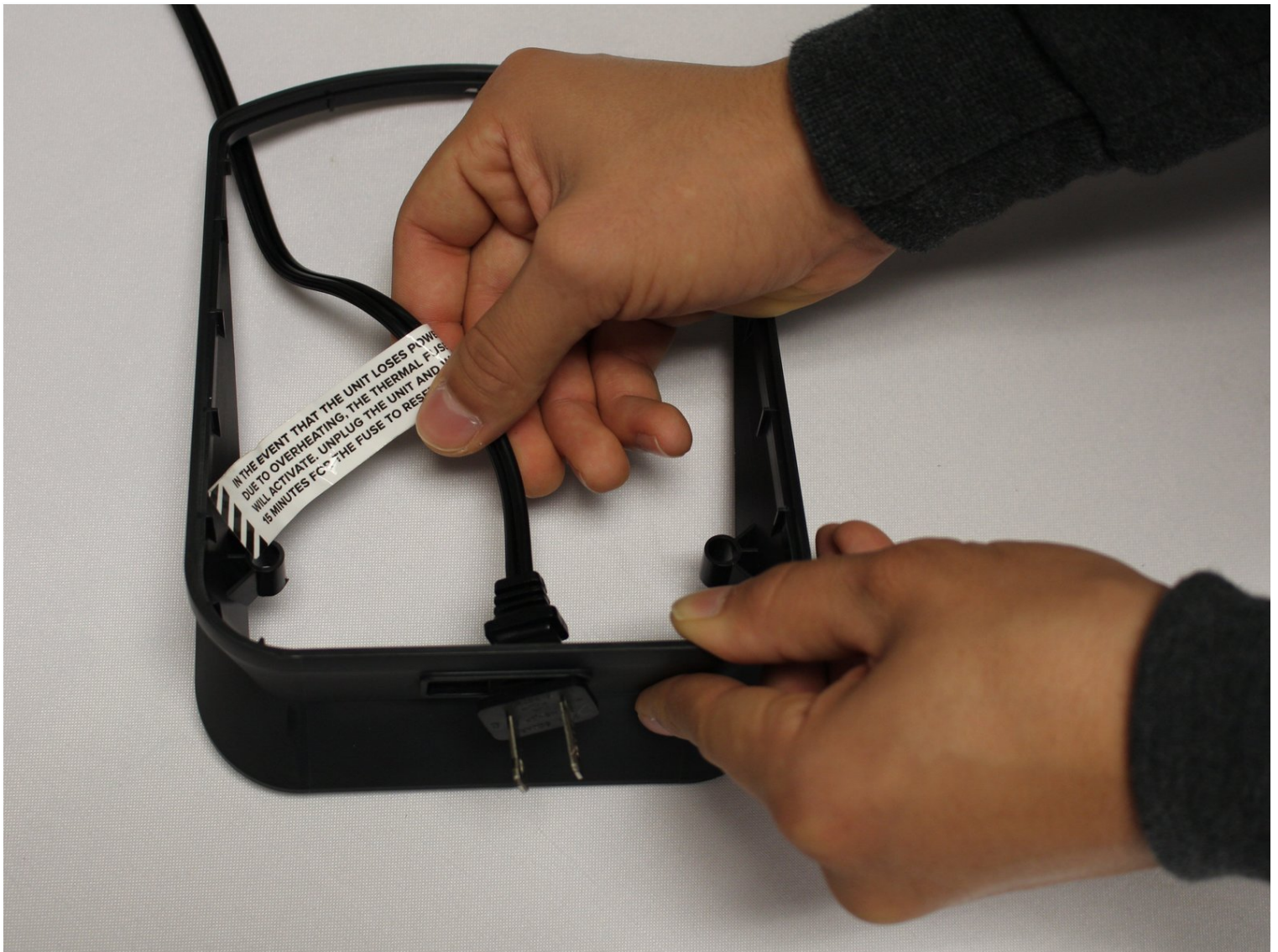




Ninja Professional Blender BL660 Power Button Panel Replacement

If your blender doesn't power on or is non...

Written By: Hernan Mendoza



INTRODUCTION

If your blender doesn't power on or is non responsive, then the power button panel may be damaged. This guide will show you how to replace the power button panel on the Ninja Blender BL660.

TOOLS:

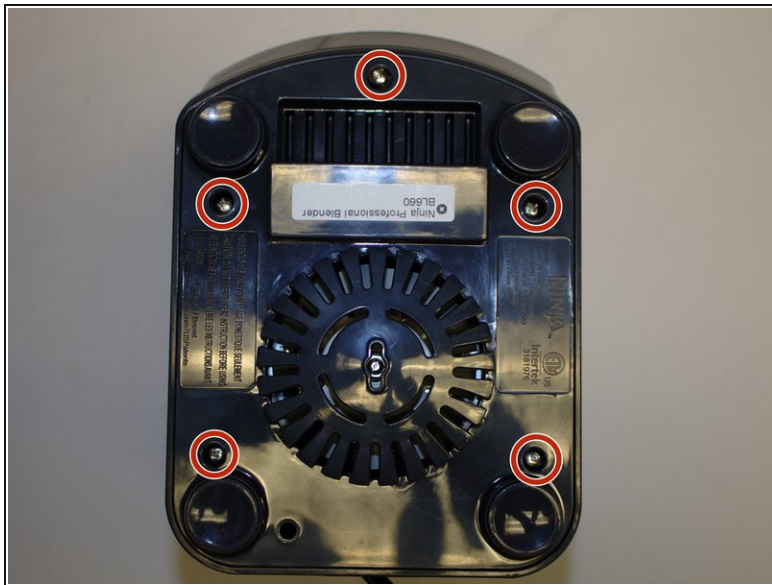
Phillips #1 Screwdriver (1)

iFixit Opening Tool (1)

Phillips #2 Screwdriver (1)

Scissors (1)

Step 1 — Blender Base



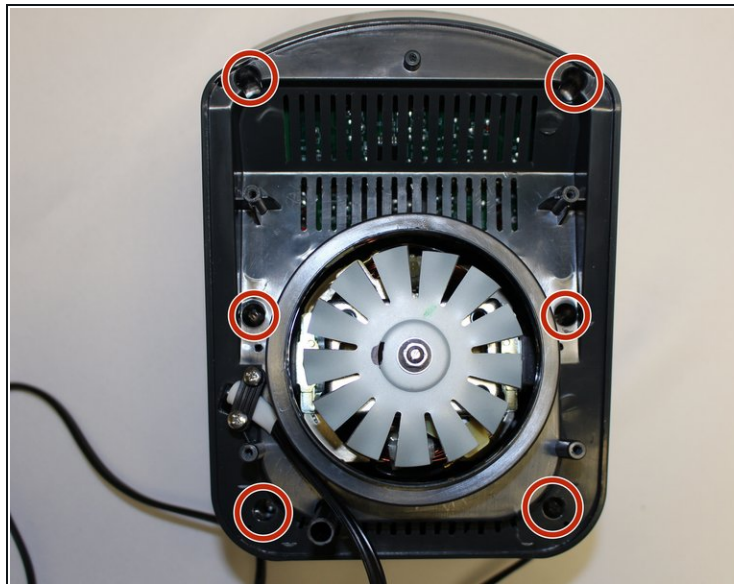
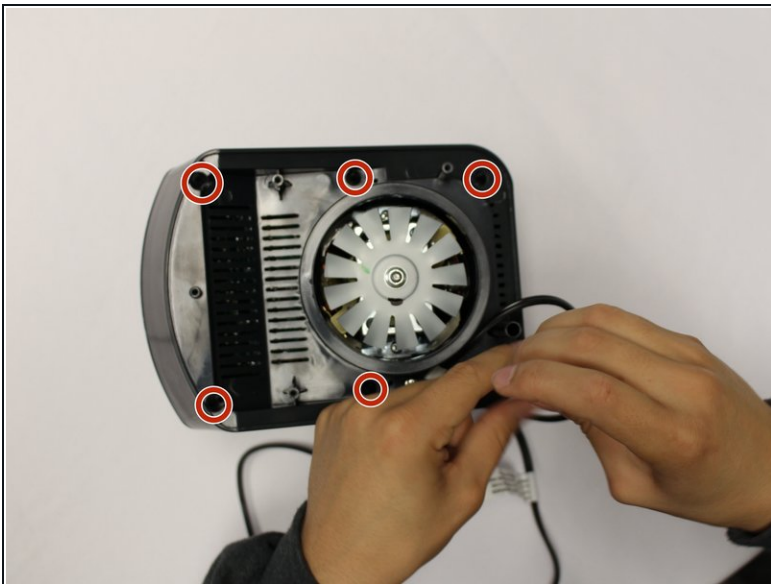
- Using the Phillips #1 screwdriver, remove the 5 screws (13mm long, 6mm wide) holding the outer base.
- Lift the base up to remove it.

Step 2



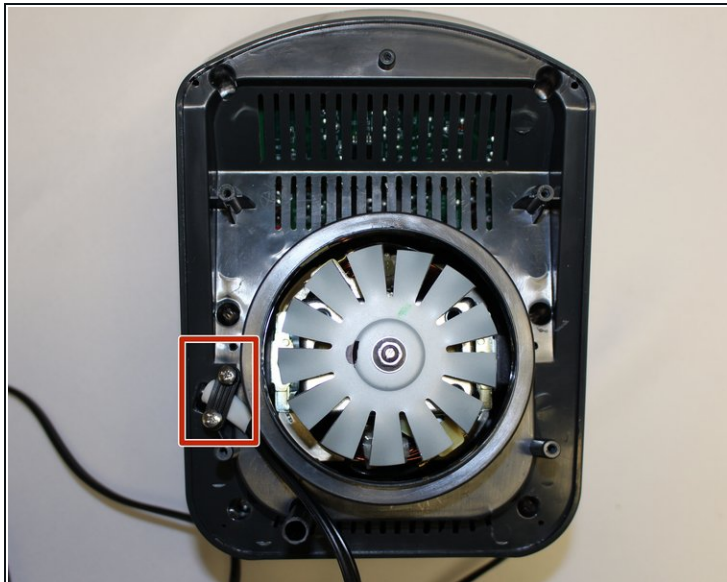
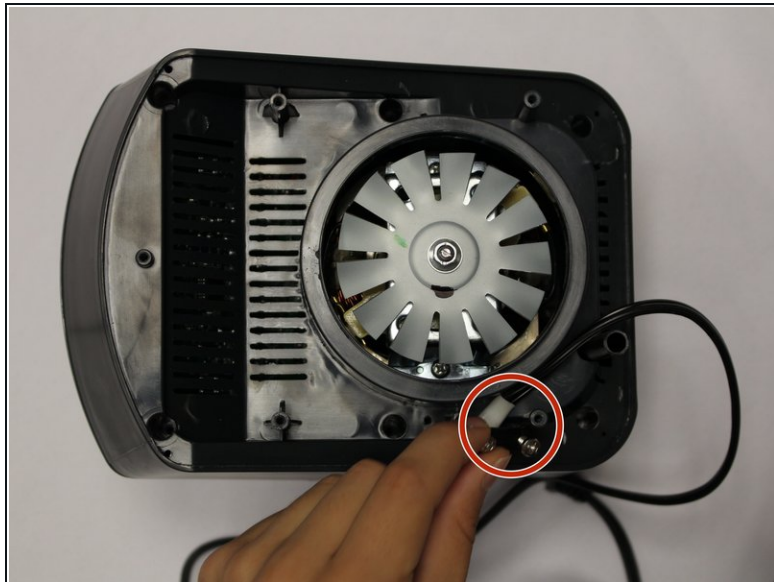
- Remove the midsection by pulling it up. If the section is stuck, use the iFixit plastic opening tool to pry it off.
- Pull the power cord through the mid-section opening.

Step 3



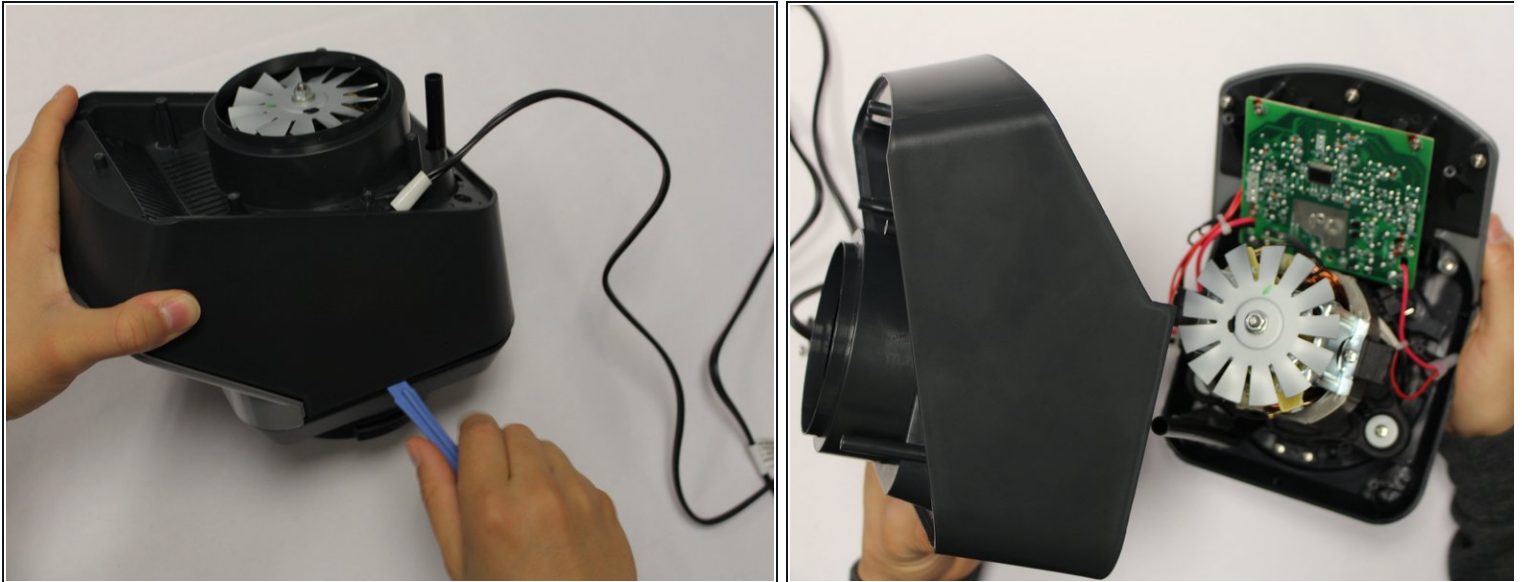
- Using the Phillips #1 screwdriver, remove the 6 screws (13 mm long, 6 mm wide).

Step 4



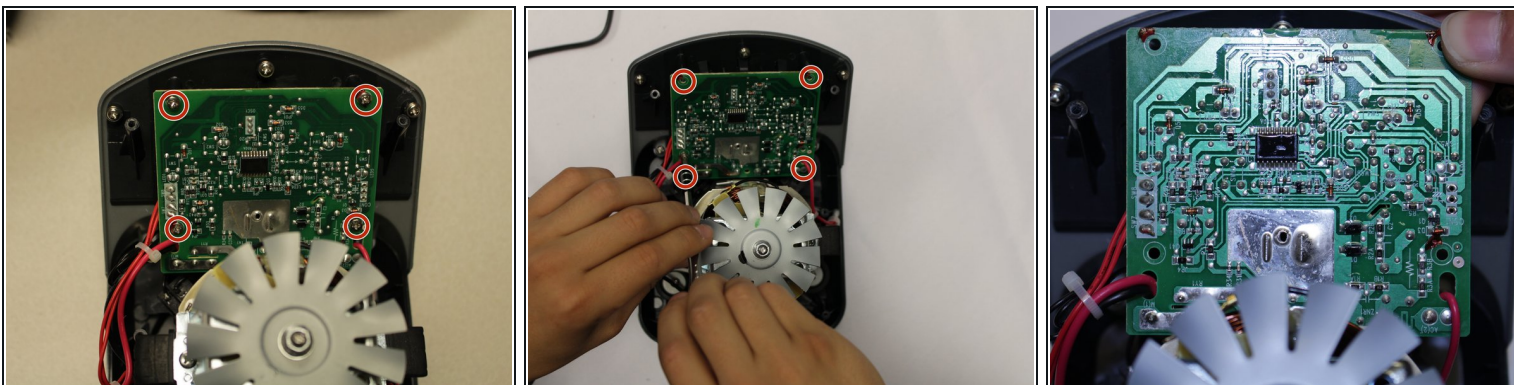
- Using the Phillips #1 screwdriver, remove the two screws (5 mm long, 3 mm wide) holding the power cord onto the motor cover.

Step 5



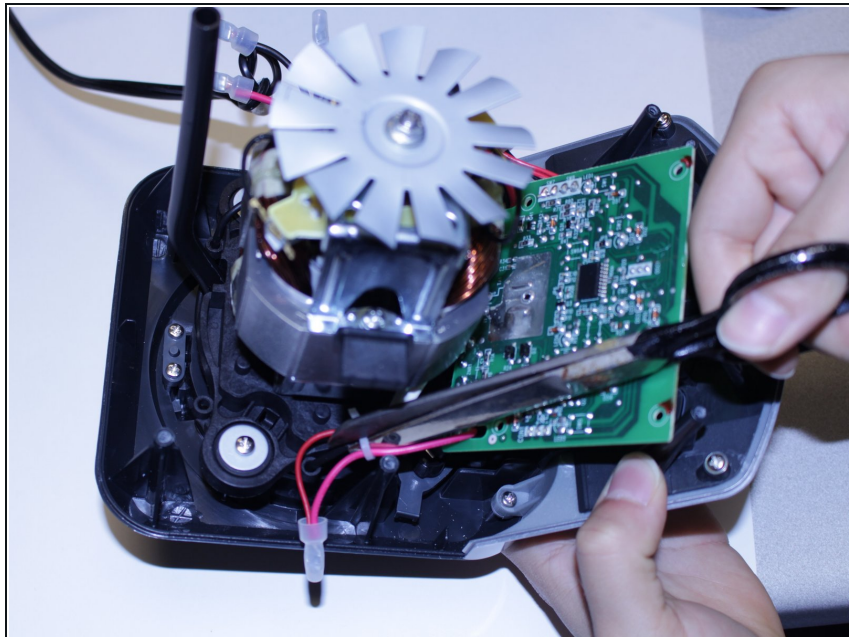
- Using the iFixit plastic opening tool, pry the motor cover off the general housing. Once it is loose, lift it up to remove it off the base.
- Slide the cover all the way to the end of the power cord.
- ⓘ Please note that the power cord does not completely come off the cover.

Step 6 — Power Button Panel



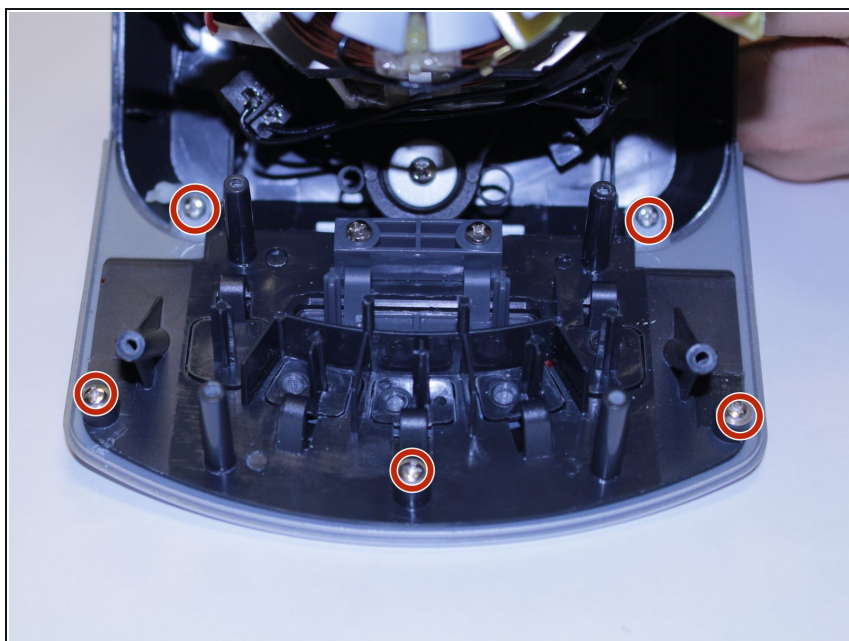
- Using the Phillips #2 screwdriver, remove the four screws holding the circuit board to the housing.

Step 7



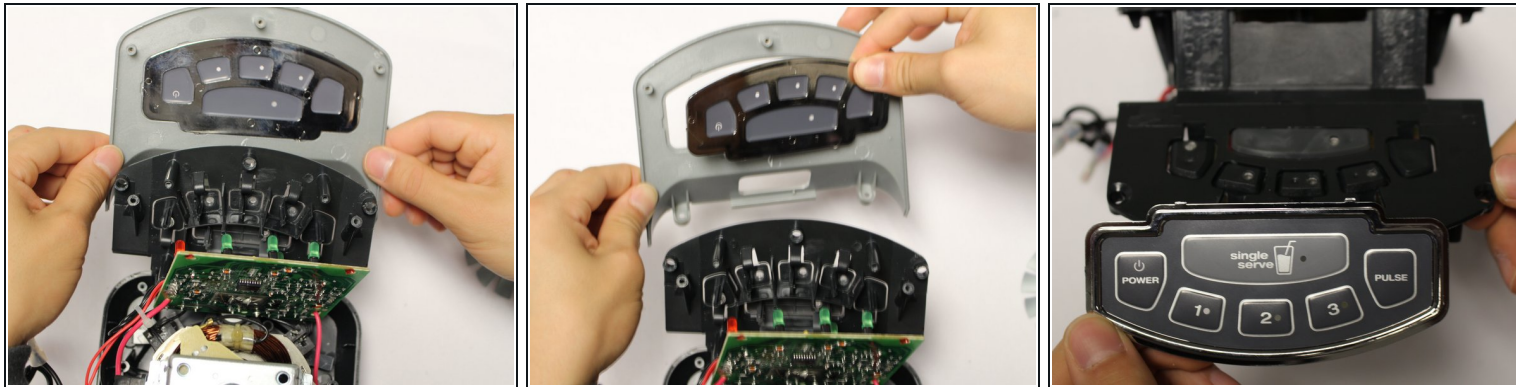
- Using a pair of scissors, cut the zip ties holding the power wires in order to give the circuit board mobility.

Step 8



- Using a Phillips #2 screwdriver, remove the 5 screws holding the power button panel cover.

Step 9



- Pull the power button panel cover off.
 - The power button panel comes off as a whole unit. Replace as needed.
- i** Ninja Kitchen does not sell the power button panel. You will have to purchase one from a third party vendor.
-

To reassemble your device, follow these instructions in reverse order.