



Huawei MediaPad S7-301u Battery Replacement

Replace the tablet's dead battery to power on the device. This guide will show how to replace the battery inside the device.

Written By: Miguel Lugo



INTRODUCTION

The battery is an essential part of the device. A battery that is in use for a long time can be worn out or malfunction. If you notice your battery drains fast or doesn't charge at all, then you know that you have a bad battery that needs to be replaced. Another sign of a bad battery is a swollen or deformed battery. A swollen battery can be hazardous because it can leak dangerous chemicals. Always wear proper protection while handling batteries and follow the manufacturer's safety procedure.

The Huawei HB3G1H internal battery is the one that needs to be replace in this device. After the replacement; if it's still not working, then the next step is to check other components of the device such as motherboard or any other wires that may be disconnected.



TOOLS:

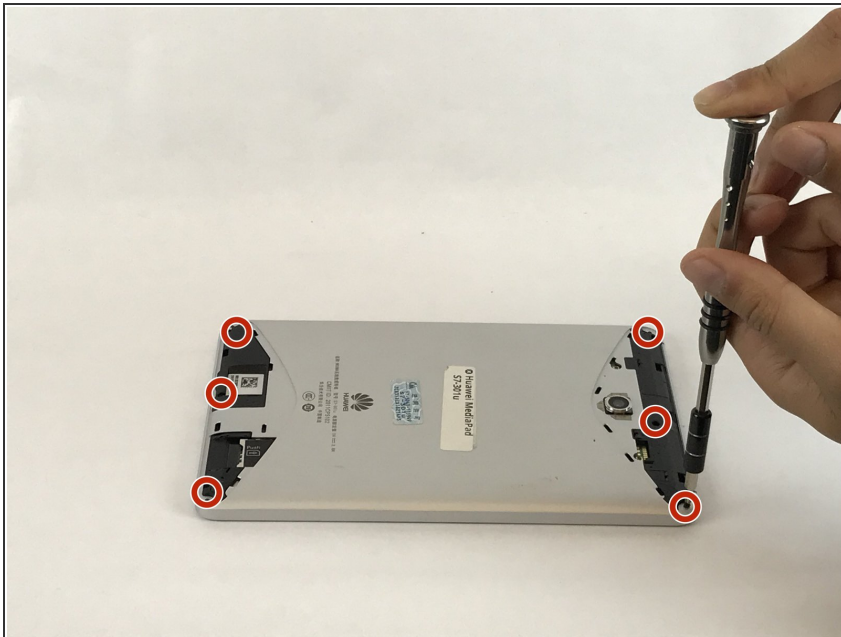
- [64 Bit Driver Kit](#) (1)
 - [iFixit Opening Tools](#) (1)
 - [Phillips #000 Screwdriver](#) (1)
-

Step 1 — Battery



- Use either your finger or a metal spudger to lift both the top and bottom black covers on the back of the tablet.

Step 2



- Use a Phillips (J000) bit screwdriver to remove the 6 (2 mm) screws located at the top and bottom of the tablet.

Step 3




- Hold the device by the silver edge and the front of the screen.
- Then use your other hand to push gently on the center back of the tablet until the front screen is detached from the silver back cover.
- Finally, separate the screen from the silver back casing.


Step 4



- Use the plastic spudger to remove the battery from the device that is glued on the metal frame.

 Be careful not to puncture the battery while removing it.

- Follow the wires to where they are connected on the motherboard and simply pull the white connector out of the socket.

 When removing the battery, be careful with the connector that attaches the wires to the motherboard.

To reassemble your device, follow these instructions in reverse order.