



DeLonghi ESAM 3000.B Magnifica Open

this guide will take you through the steps of...

Written By: VauWeh



INTRODUCTION

this guide will take you through the steps of repairing your device.



TOOLS:

- [Kreuzschlitzschraubendreher PH 2](#) (1)
-

Step 1 — Preparations



 Pull the plug!

- Remove the drip tray, the water tank and the pulp container.

Step 2 — Unscrew the rear panel



- The rear panel and side panels are attached with six phillips screws #2. Screw them out.

Step 3 — Remove right side panel



- Slide the right side panel about 2 cm to the back.
- Then solve it.

Step 4 — Remove left side panel



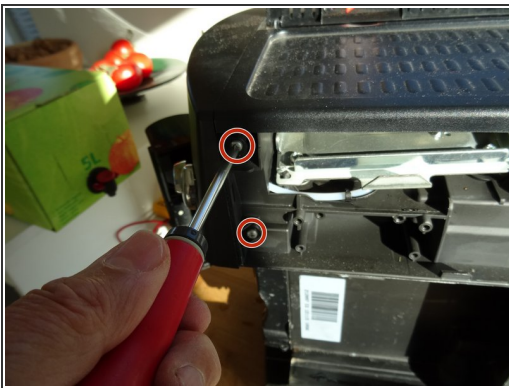
- The left side is a bit stuck. Place a plastic opening tool in the gap between the front and left side panel above the opening for the water tank. Lift the gap slightly larger.
- Then place the tool in the gap between the front and left side panel under the opening for the water tank. Increase the gap and push the side part about 2 cm to the rear.
- Lift out the left side piece.

Step 5 — Remove rear panel



- Take out the rear panel.

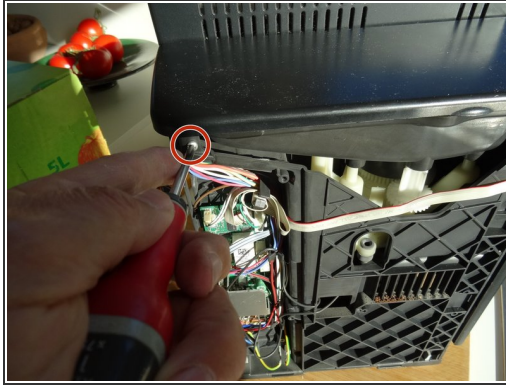
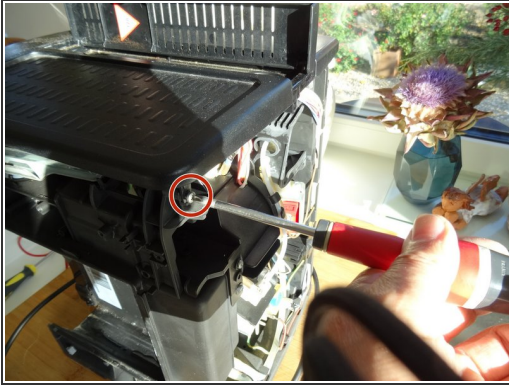
Step 6 — Unscrew top cover



- The front panel is secured with four PH2 Phillips screws, two left and one right each. Turn it out.
- Use a plastic opening tool to lever off the steam tap.
- Carefully pull the front panel about 1 cm forward so that there is a gap between the top cover and the front panel,

⚠ Do not pull the front panel too far, it is still attached with different hoses and cables.

Step 7 — Remove top cover



- Two Phillips screws PH2 hold the lid at the back. Turn it out.
- Lift the lid upwards.

Repeat the steps in order to reassemble your device.