



# Acer Iconia One 10 B3-A30 Repair Power Switch Replacement

After the motherboard has been removed, the power switch can be replaced.

Written By: Austin Pickart



---

## INTRODUCTION

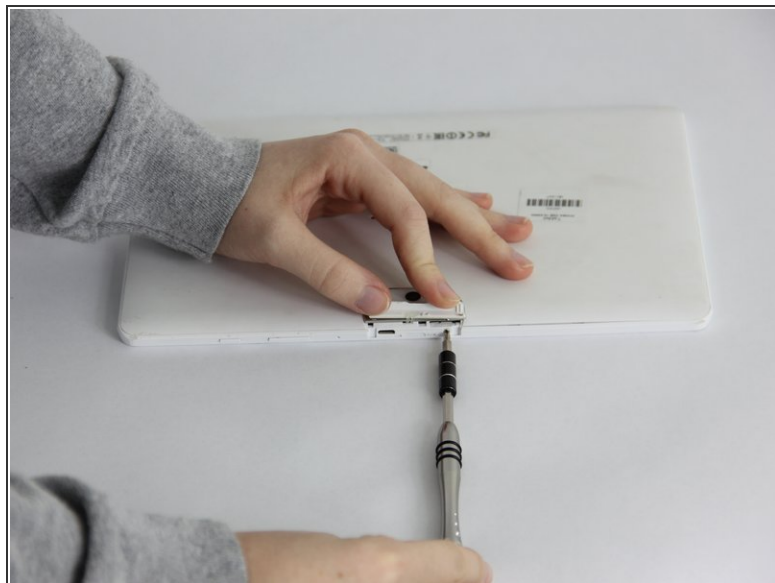
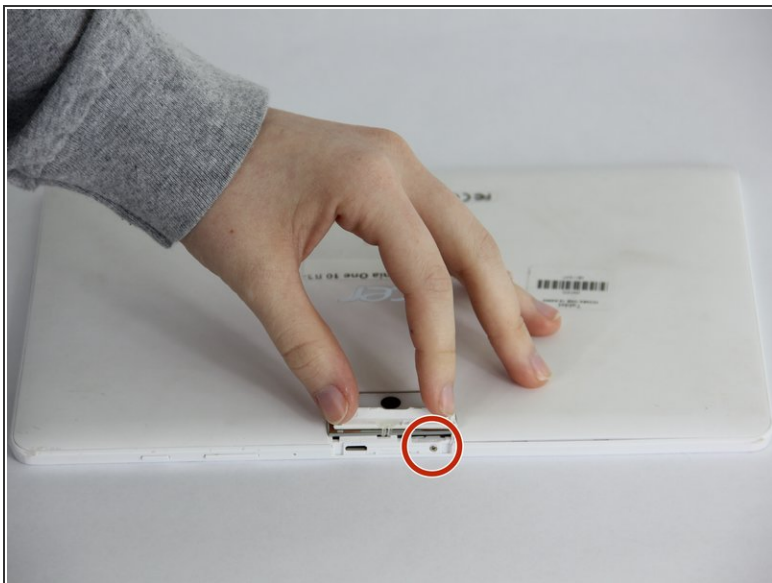
After the motherboard has been removed, you now have access to the power switch. You will need to use a plastic opening tool to pop the switch out.

---

### TOOLS:

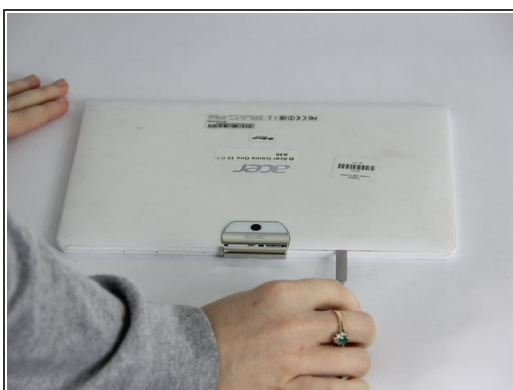
- [Spudger](#) (1)
  - [Metal Spudger](#) (1)
  - [Phillips #00 Screwdriver](#) (1)
  - [iFixit Opening Tools](#) (1)
-

## Step 1 — Battery



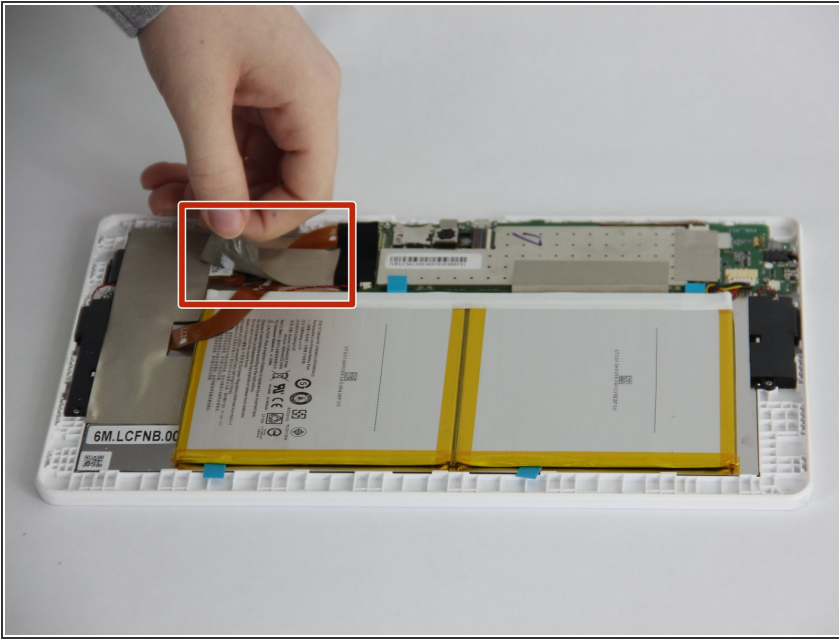
- ⚠ Make sure the device is powered off.
- Open media port cover at the top of the tablet.
- Use the Phillips #00 screwdriver to remove the 1 mm screw.

## Step 2



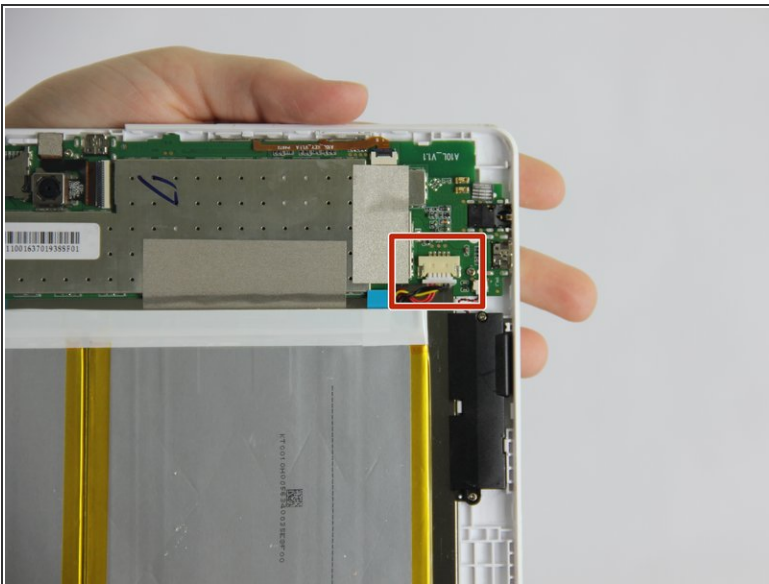
- Using the metal spudger, carefully pry open the back cover.

## Step 3



- Remove small section of grey tape.

## Step 4



- Unplug the connection cord from the motherboard.

## Step 5



- Try to remove the battery by pulling on the blue tabs.
  - If unsuccessful, use the black plastic spudger to gently break the glue bonds underneath and pull up to remove the battery.
- ⚠ Be very cautious not to puncture or bend the battery.

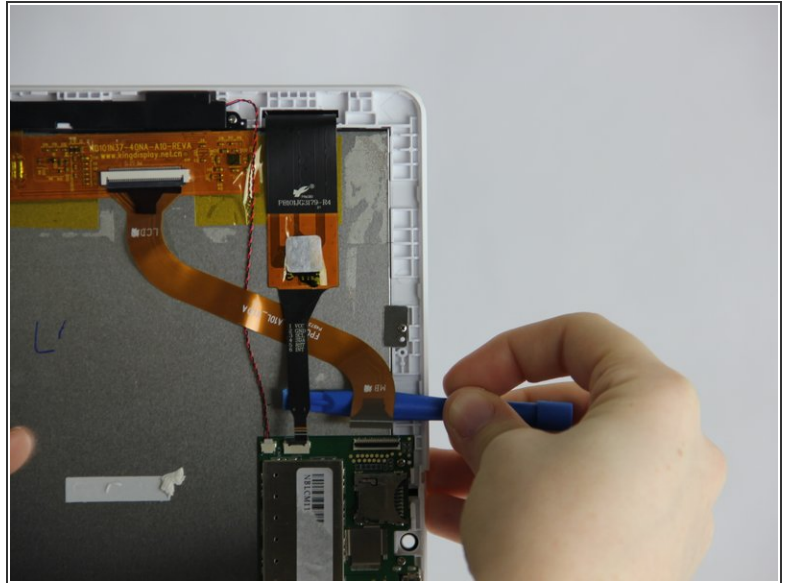
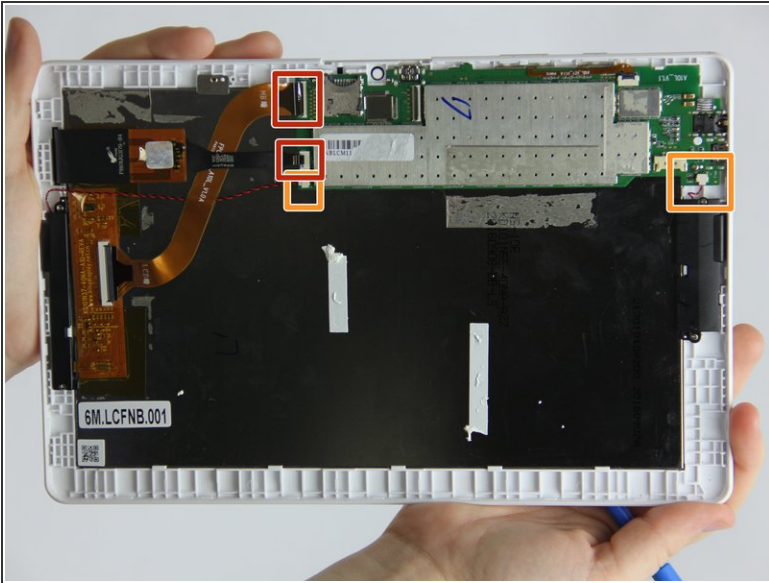
## Step 6 — Motherboard



- Remove all of the tape surrounding the motherboard.

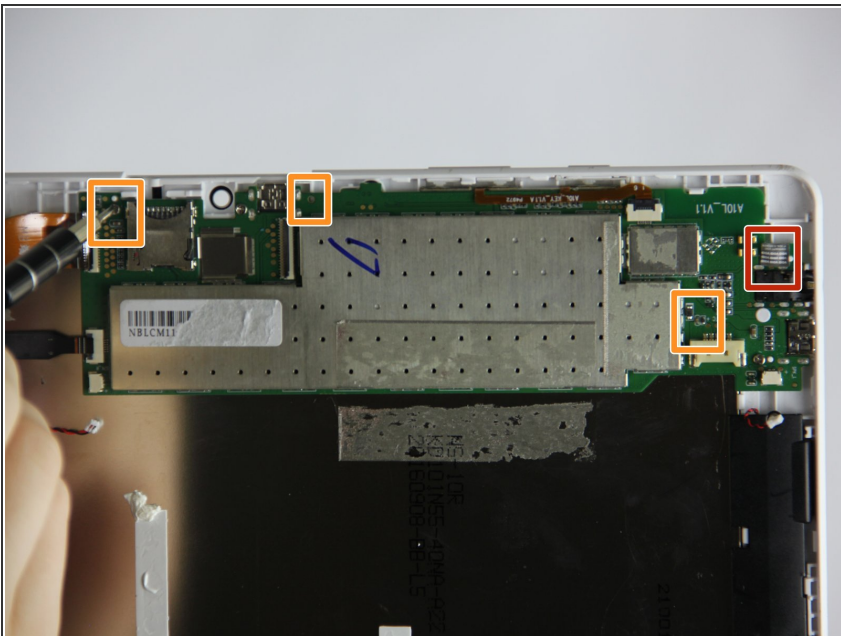


## Step 7



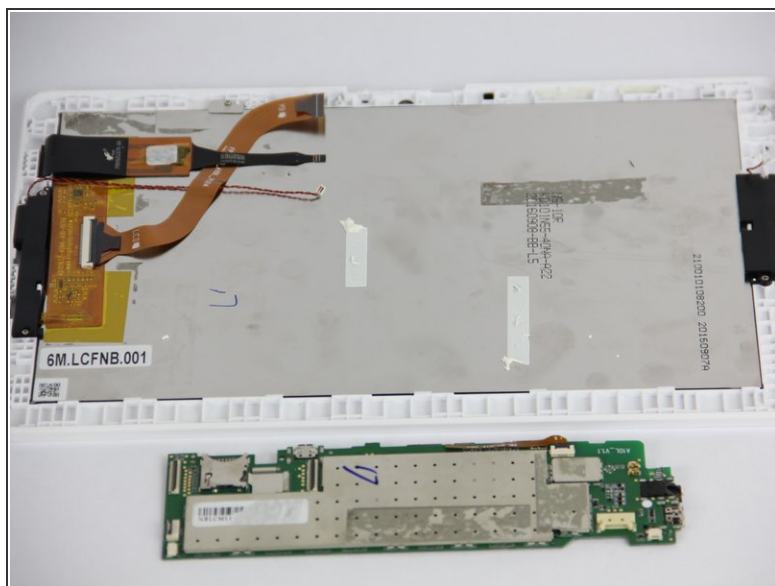
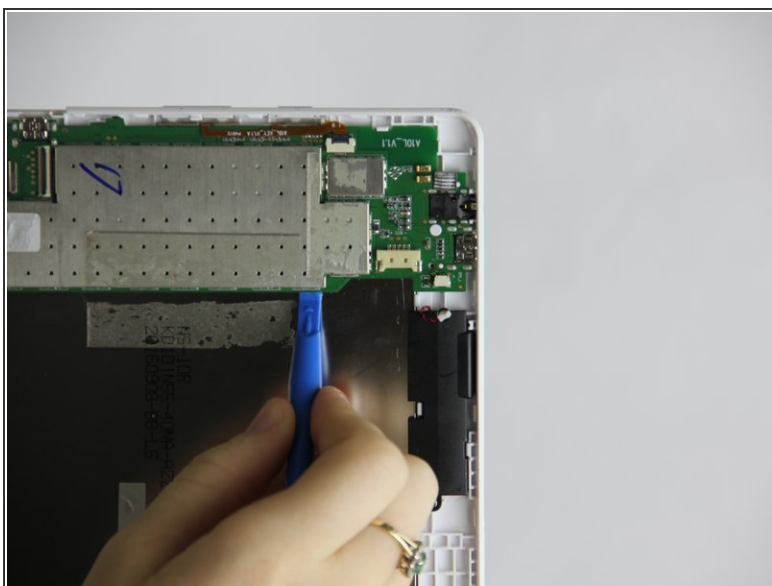
- Starting with the 2 large connections use the plastic opening tool to gently pry on the connections and pop them out.
- Now, disconnect the two smaller black and red cords from the motherboard.

## Step 8



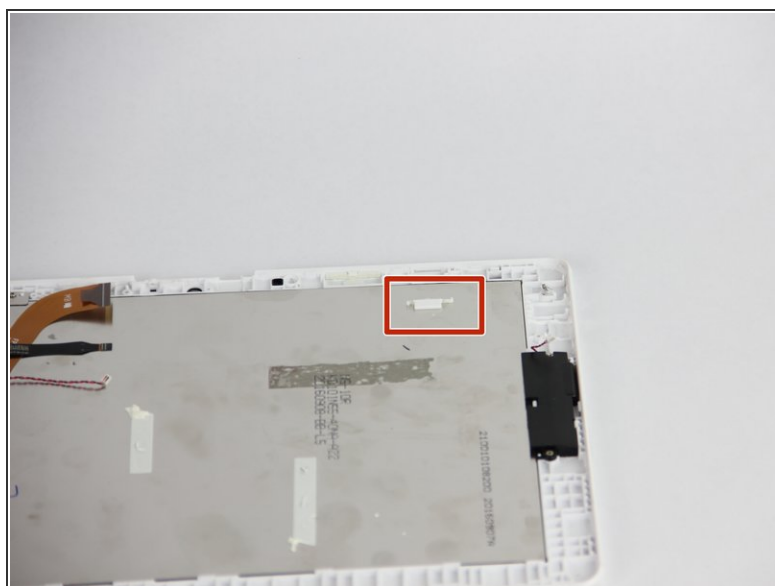
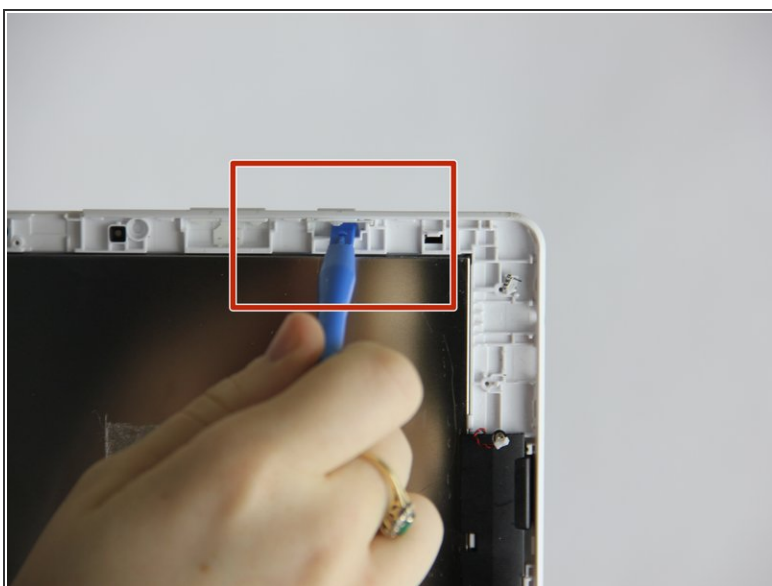
- Scrape away the small square sticker to reveal one small screw. Use the Phillips #00 screwdriver to remove the screw.
- Using the same screwdriver remove the other three screws on the motherboard.

## Step 9



- Using the small plastic tool, carefully pry the motherboard out of the device.

## Step 10 — Power Switch



- Depress power switch using finger, and simultaneously pry in same direction with a plastic opening tool.

To reassemble your device, follow these instructions in reverse order.