



Garmin Nuvi 56LMT Battery Replacement

In the following guide we will be instructing the user on how to properly remove and replace the battery from their device.

Written By: Christopher Keller

Caution:
Risk of explosion if battery is replaced by an incorrect type.
Rechargeable Li-ion Battery
Rating: 3.7V 820mAh 3.03Wh

To prevent burns, fire, explosions, or injury, DO NOT:

- Put into fire or expose to prolonged temperatures above 60°C
- Short-circuit or allow metal objects to contact battery terminals
- Mutilate, crush, or attempt to disassemble

Must be recycled or disposed of properly

Pack Assembly Date 05/04/14

GARMIN Made in Japan
361-00056-05 Finished in China


K117B123D00V1



INTRODUCTION

This guide provides a quick and simple fix to one of the most common problems concerning this device. Before continuing it should be noted that this battery is a lithium ion battery. Any puncturing to the outer shell of the battery could risk a corrosive hazard as well as releasing flammable vapors.

TOOLS:

- [T5 Torx Screwdriver](#) (1)
 - [iFixit Opening Tools](#) (1)
-

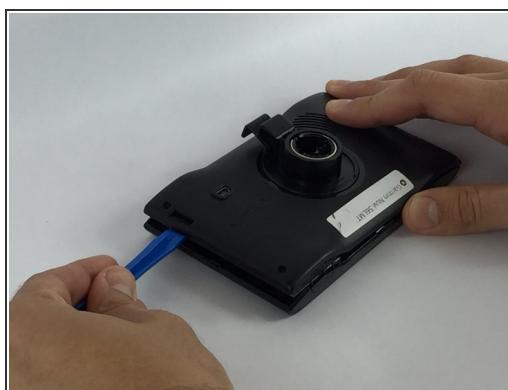
Step 1 — Battery



i Before disassembling, power off the device.

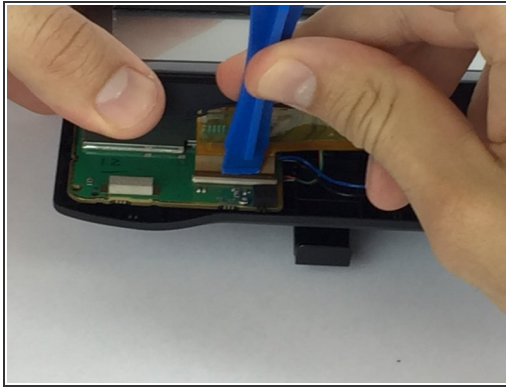
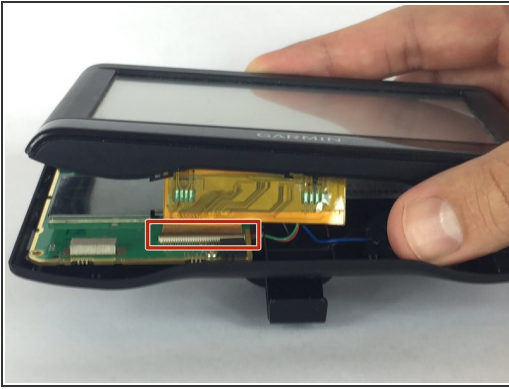
- There are four 11.0 mm screws located at each corner on the back of the device.
- With the T5 torx screwdriver, remove these screws and set aside in a safe place.

Step 2



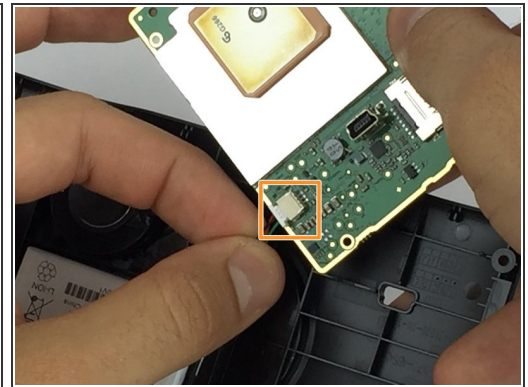
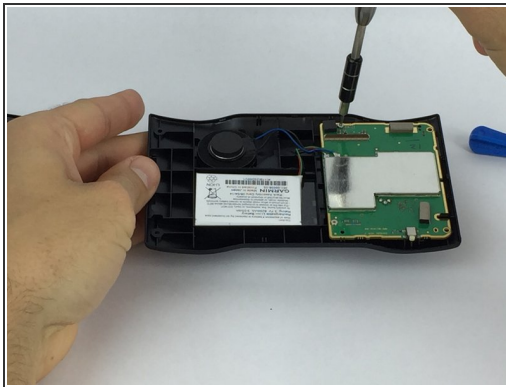
- Using the plastic opening tool, pry apart the device around the seam.

Step 3



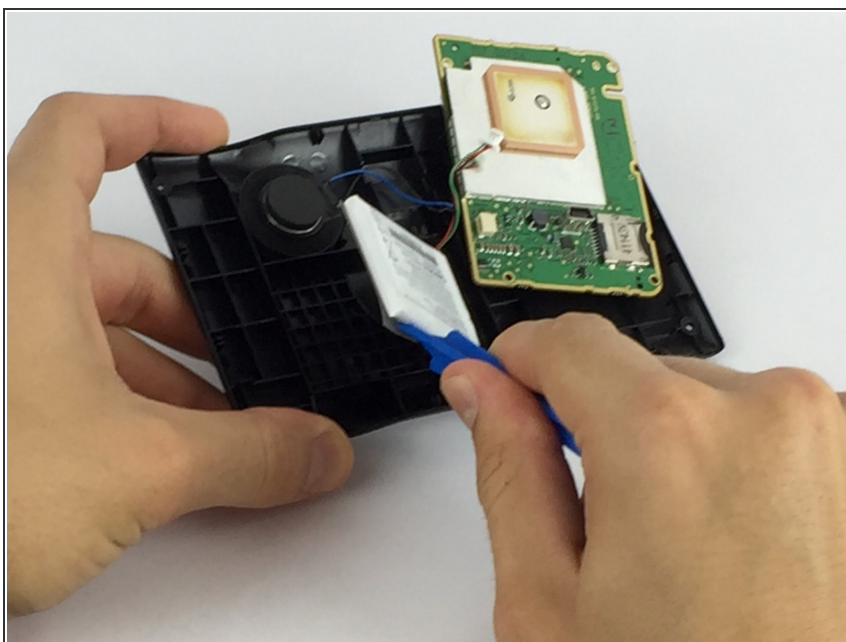
- Observe the ribbon connecting the screen to the circuit board.
- Detach the clip using the plastic opening tool and set aside the screen.

Step 4



- Using the T5 Torx screwdriver, remove the two remaining 5.0 mm screws.
- Lift the board from its housing and then detach the plug coming from the battery.

Step 5



- If the battery is glued in place use the plastic opening tool to remove it.
- Finally, exchange the old battery with the replacement.

To reassemble your device, follow these instructions in reverse order.