



# LG K7 T-Mobile Rear Phone Camera Replacement

The camera is blurry, pictures cannot be captured, or the display is black when attempting to capture a photo.

Written By: Salem Jean



## INTRODUCTION

Remove the battery before removing the back controls to avoid electric shock. Do not lose any screws or the middle button of the back controls.



### TOOLS:

- [Phillips #00 Screwdriver](#) (1)
- [iFixit Opening Tools](#) (1)
- [Spudger](#) (1)



### PARTS:

- [Replacement LG K7 rear camera](#) (1)

## Step 1 — Battery



- Flip the LG K7 over so that the back of the phone is facing up.
- Locate the small notch on the bottom left side of the phone.

## Step 2



- Insert a plastic opening tool into the notch and lift the back cover upward while holding the bottom portion of the phone down to remove it.



## Step 3



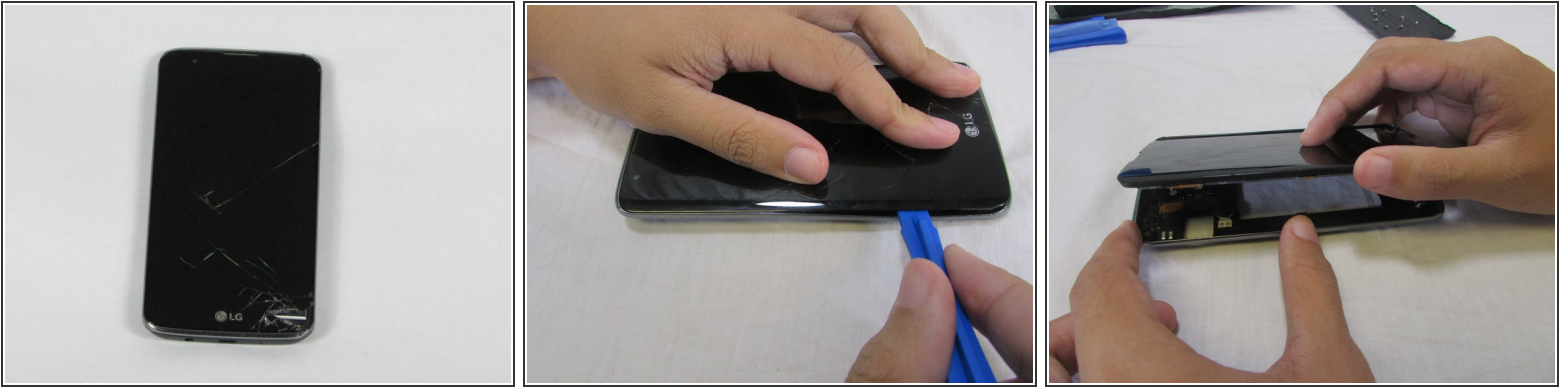
- Remove the battery.

## Step 4 — Rear Phone Camera



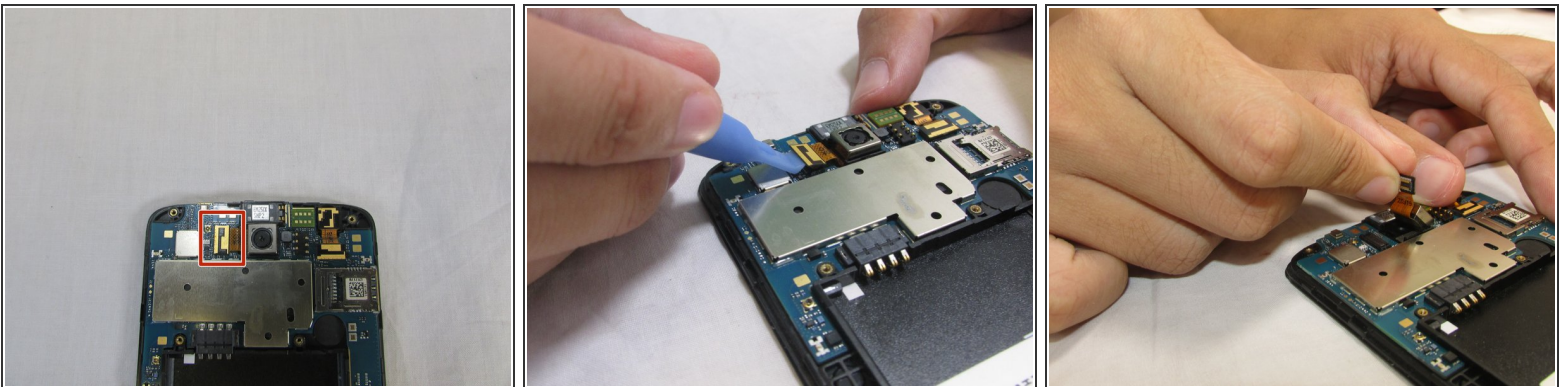
- Located to nine 3.4 mm screws that keep that keep the phones rear housing in tacked.
- Using a Phillips 00 screwdriver remove all nine 3.4 mm screws.

## Step 5



- Turn the phone over so the screen is facing up
- Insert your plastic opening tool between the midframe and front panel assembly on the side of the phone.
- Slide the plastic opening tool down the seams carefully to separate the screen from the rest of the phone housing.

## Step 6



- Locate the ribbon cable that holds the camera's ribbon cable in place.
- Carefully remove the camera's ribbon cable from the motherboard using the plastic removal tool.
- Holding the camera ribbon you just released pull upwards and the camera should release from the case.

To reassemble your device, follow these instructions in reverse order.